

STARCLEAN 22-24 LED

SCS22/SCS24/SCR22/SCR24

SPECIFICATION FEATURES

- HOUSING:** 20 gauge formed cold rolled steel housing with continuous seam welds. Aluminum and stainless steel options available.
- FRAME:** Inset and overlapping doorframe available in aluminum, cold rolled steel, and stainless steel. Extruded inset door available in anodized aluminum or white painted aluminum. Frame held to housing via aircraft cable.
- LENS:** Acrylic lens with smooth side out. Alternate lens options available including Prismatic Polycarbonate and a White Frosted Polycarbonate. Inset (cold rolled steel, stainless steel and .050 alum) and Overlapping frame uses a rail hold down system.
- LED:** Available in three color temperatures 3500°K, 4000°K and 5000°K. Other color temperatures available, consult factory. 0-10V dimming available with 10-100% range and 1-100% range. Must specify dimming under options.
- FASTENERS:** Stainless steel Philips flat head screws with captive cage nuts. Finish to match housing.
- FINISH:** White antimicrobial powder coat finish following multistage iron phosphate pre-treatment.
- GASKET:** Closed cell EPDM and closed cell silicone gaskets prevent air contaminations from entering the fixture.



APPLICATION:

Cleanroom, Hospital, Hi-Tech Manufacturing, Laboratory, Food Processing Facilities, Commercial Kitchens, and more.

MOUNTING:

Surface (S) or Recessed (R) installation. Recessed mounting accommodates Grid and Flange installations. Recessed fixtures will be supplied with adjustable swing arms that can be used for Flange applications or taped to the side for Grid applications. Recessed install compatible with 1-1/2" and 15/16" Grid systems. Mounting for custom ceilings available, consult factory.

LABEL:

Fixture is certified to UL standards. Certified IP65, ISO4, and NSF.



ORDERING INFORMATION

Ex: SCR24-HC/IE-L2351C-C-UN-EL1

PRODUCT FAMILY	MOUNTING	NOMINAL SIZE (Dimensional Data Pg. 2)	HOUSING	FRAME Inset (I) or Overlap (O)	LUMEN OUTPUT** (Performance Data Pg. 3)
SC	S = Surface R = Recessed Housing (Grid/Flange installation)	22 = 2x2 24 = 2x4	HC = 20Ga. CRS (standard) HS = 20Ga. SS (Brushed) HP = 20Ga. SS (painted) HA = .050Ga. Alum. (painted)	IE=Extruded Alum. ✓ IP=Extruded Alum. ✓ (Painted) IP65: IC=20Ga.CRS IA= .050 Alum. (Painted) IB=20Ga.S.S. (Brushed) IS=20Ga.S.S. (Painted) OC=18Ga.CRS (Standard) OS=18Ga.S.S (Brushed) OP=18Ga.S.S. (Painted) OA= .050 Alum. (Painted)	L2 = Low L4 = Standard L6 = Medium L8 = High
LAMP TYPE	CIRCUITS	LENS	VOLTAGE	OPTIONS	
35 = 3500°K 40 = 4000°K 50 = 5000°K	1C = 1 Circuit 2C = 2 Circuits	A=.125 Prismatic Acrylic B=.125 Prismatic Poly. C=.156 Prismatic Poly. D=.187 Prismatic Poly. Ø E=.125 White Frosted Poly. G=.140 DR Acrylic	12 = 120V 27 = 277V 34 = 347V UN = Universal (120V-277V)	FZ* FY DM EL1 DM1 EL2 SD2 RF* SD3 TH IP66 TM+	

KEY

- FZ = Fuse*
DM = 0-10V dimming with 10-100% range
DM1 = 0-10V dimming with 1-100% range
SD2 = Step Dim. Module (50-100%)
SD3 = Step Dim. Module (25-50-100%)
IP66 = IP66 rating (only with Overlapping Frame)

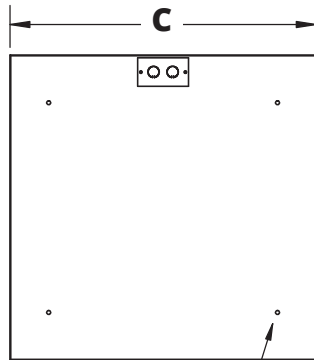
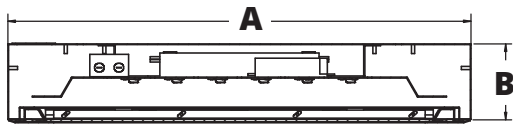
- FY = Yoke Bracket for Recessed mount (Replaces swing arm system)
EL1 = Emerg. Bat. LED Low (1100-1250 lm)
EL2 = Emerg. Bat. LED High (2200-2500 lm)
RF = (RIF) Radio Interference Filter*
TH = Torx Head screws (with center pin)
TM = Tandem Mount+

- ✓ Not IP65
✦ Cannot be used with .187 Prismatic Poly
-- Subject to change
Ø Cannot be used with IE or IP
* Cannot use with UN voltage
+ Requires joiner bracket. Supplied with fixture.

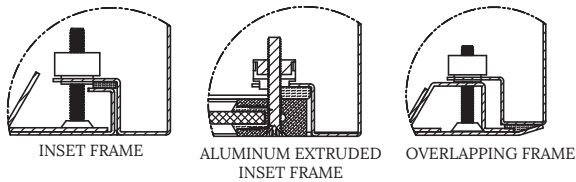
Notes:
Specifications and Dimensions are subject to change without notice.
If circuit is not specified at time of quote or order, fixture will have single circuit.

DIMENSIONAL DATA

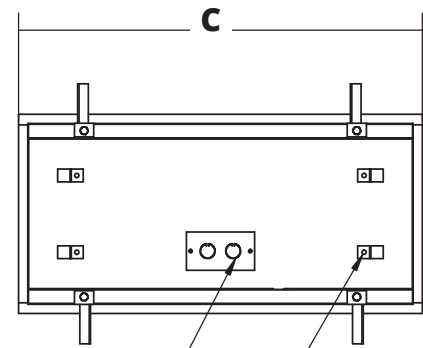
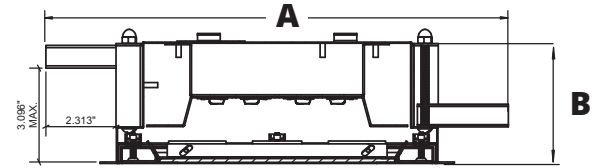
SURFACE MOUNTING (S)



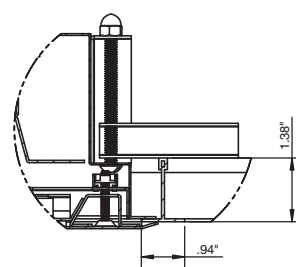
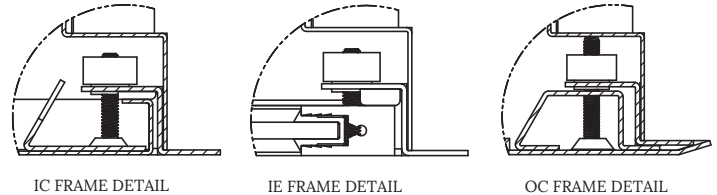
SCS22: 4x Ø.31" HOLE
SC24: 6x Ø.31" HOLE



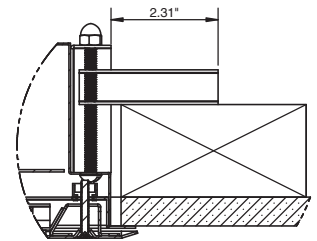
RECESSED MOUNTING (R): GRID & FLANGE



.875" KO
(4) Ø .250 "
HOLES FOR CEILING WIRE ATTACHMENT



SCR (W/ OC FRAME) RECESSED GRID



SCR (W/ OC FRAME) RECESSED FLANGE

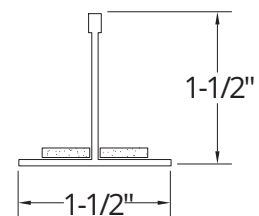
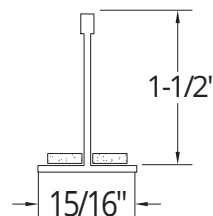
RECOMMENDED CEILING CUT OUTS:

SCR22: 22.88" X 22.88"
SCR24: 22.88" X 46.88"

	A	B	C
SCS22	24.00"	3.94"	24.07"
SCS24	24.00"	3.94"	48.07"
SCR22	23.69"	4.00"	23.69"
SCR24	23.69"	4.00"	47.69"

GRID COMPATIBILITY:

Spaced at 24" x 48" Centers



Notes:
Specifications and Dimensions are subject to change without notice.
For additional options and dimensional details please consult your New Star Lighting Representative.

PERFORMANCE DATA**

MODEL	OUTPUT	LAMP TYPE	LUMENS DELIVERED	EFFICACY (lm/W)	INPUT POWER (W)
SC22	Low	3500°K	3000	120	25
		4000°K	3125	125	25
		5000°K	3250	130	25
	Standard	3500°K	6000	120	50
		4000°K	6250	125	50
		5000°K	6500	130	50
	Medium	3500°K	8625	115	75
		4000°K	9000	120	75
		5000°K	9375	125	75
	High	3500°K	11500	115	100
		4000°K	12000	120	100
		5000°K	12500	125	100
SC24	Low	3500°K	6000	120	50
		4000°K	6250	125	50
		5000°K	6500	130	50
	Standard	3500°K	12000	120	100
		4000°K	12500	125	100
		5000°K	13000	130	100
	Medium	3500°K	17250	115	150
		4000°K	18000	120	150
		5000°K	18750	125	150
	High	3500°K	23000	115	200
		4000°K	24000	120	200
		5000°K	25000	125	200

Displayed information is with a .125 Prismatic Polycarbonate. Subject to change without notice. Visit www.newstarlighting.com for additional information and IES files.

Notes:

**Performance Data subject to change without notice.

Specifications and Dimensions are subject to change without notice.

For additional options and dimensional details please consult your New Star Lighting Representative.

STARCLEAN 22-24 FLUORESCENT

SCS22/SCS24/SCG22/SCG24/SCF22/SCF24

SPECIFICATION FEATURES

- HOUSING:** 20 gauge formed cold rolled steel housing with continuous seam welds. Aluminum and stainless steel options available.
- FRAME:** Inset and overlapping doorframe available in aluminum, cold rolled steel, and stainless steel. Extruded inset door available in anodized aluminum or white painted aluminum. Frame held to housing via aircraft cable.
- LENS:** Acrylic lens with smooth side out. Alternate lens options available including Prismatic Polycarbonate and a White Frosted Polycarbonate. Inset (cold rolled steel, stainless steel and .050 alum) and Overlapping frame uses a rail hold down system.
- ELECTRONICS:** Electronic instant start ballast <10% THD standard. Lamps by others.
- FASTENERS:** Stainless steel Philips flat head screws with captive cage nuts. Finish to match housing.
- FINISH:** White antimicrobial powder coat finish following multistage iron phosphate pre-treatment.
- GASKET:** Closed cell EPDM and closed cell silicone gaskets prevent air contaminations from entering the fixture.



APPLICATION:

Cleanroom, Hospital, Hi-Tech Manufacturing, Laboratory, Food Processing Facilities, Commercial Kitchens, and more.

MOUNTING:

Surface, Grid or Flange mounting. Flange fixtures come with adjustable 90° swing arm for easy installation. Optional Yoke Bracket would replace swing arm. Grid fixtures compatible with 1-1/2" and 15/16" Grid systems. Mounting for custom ceilings available, consult factory.

LABEL:

Fixture is certified to UL standards. Certified IP65, ISO4, and NSF.



ORDERING INFORMATION

Ex: SCG24-HS/IC-3322C-B-UN-PR

PRODUCT FAMILY	MOUNTING	NOMINAL SIZE (Dimensional Data Pg. 2)	HOUSING	FRAME Inset (I) or Overlap (O)	# OF LAMPS
SC	S = Surface G = Grid F = Flange	22 = 2x2 24 = 2x4	HC = 20Ga. CRS (standard) HS = 20Ga. SS (Brushed) HP = 20Ga. SS (painted) HA = .050Ga. Alum. (painted)	IE=Extruded Alum. ✓ ◆ IP=Extruded Alum. ✓ ◆ (Painted) IP65: IC=20Ga.CRS IA= .050 Alum. (Painted) IB=20Ga.S.S. (Brushed) IS=20Ga.S.S. (Painted) OC=18Ga.CRS (Standard) OS=18Ga.S.S (Brushed) OP=18Ga.S.S. (Painted) OA= .050 Alum. (Painted)	2 = 2 Lamps 3 = 3 Lamps 4 = 4 Lamps 6 = 6 Lamps
LAMP TYPE	CIRCUITS	LENS	VOLTAGE	OPTIONS	
2x2: 14 = Lin. 14W T5 17 = Lin. 17W T8 24 = Lin. 24W T5 HO	1C = 1 Circuit 2C = 2 Circuits	A=.125 Prismatic Acrylic B=.125 Prismatic Poly. C=.156 Prismatic Poly. D=.187 Prismatic Poly. Ø E=.125 White Frosted Poly. G=.140 DR Acrylic	12 = 120V 27 = 277V 34 = 347V ■ UN = Universal (120V-277V)	E1* ◀ IP66 E2* ◀ TM+ RF* DB* TH PR FY FZ*	
2x4: 28 = Lin. 28W T5 32 = Lin. 32W T8 54 = Lin. 54W T5 HO					

KEY

- E1 = Emerg. Battery Pack (450 Lumens)* ◀
- E2 = Emerg. Battery Pack (1100 Lumens)* ◀
- RF = RIF (Radio Interference Filter)*
- TH = Torx Head screws (with center pin)
- FY = Yoke Bracket for Flange mount (Replace swing arm system)

- IP66 = IP66 rating (only with Overlapping Frame)
- TM = Tandem Mount+
- DB = Dimming Ballast*
- PR = Program Rapid Start
- FZ = Fuse*

- ✓ Not IP65
- ◆ Cannot be used with .187 Prismatic Poly
- Ø Cannot be used with IE or IP
- * Cannot use with UN voltage
- + Requires joiner bracket. Supplied with fixture.
- Consult factory for lamp-ballast options
- ◀ Consult factory for T5 availability

Notes:
Specifications and Dimensions are subject to change without notice.
If circuit is not specified at time of quote or order, fixture will have single circuit.

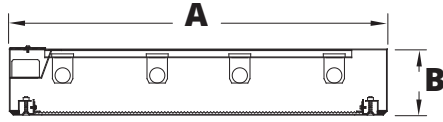
STARCLEAN 22-24 FLUORESCENT

SCS22/SCS24/SCG22/SCG24/SCF22/SCF24

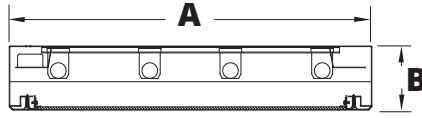


DIMENSIONAL DATA

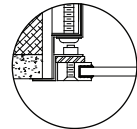
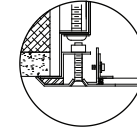
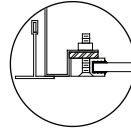
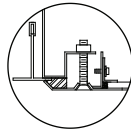
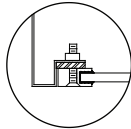
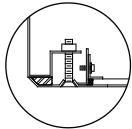
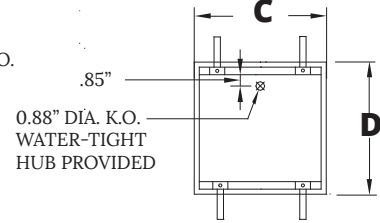
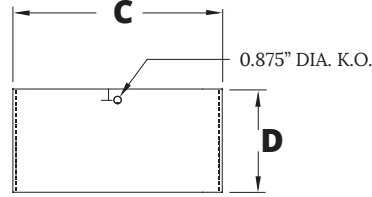
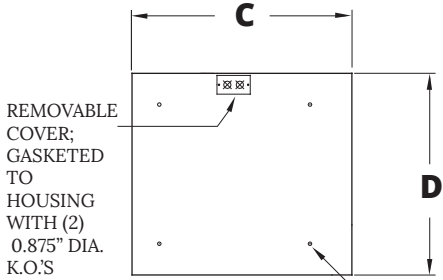
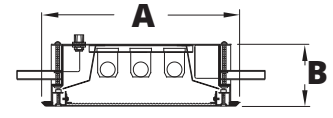
SURFACE MOUNTING



GRID MOUNTING



FLANGE MOUNTING



OVERLAPPING FRAME ALUMINUM EXTRUDED INSET FRAME

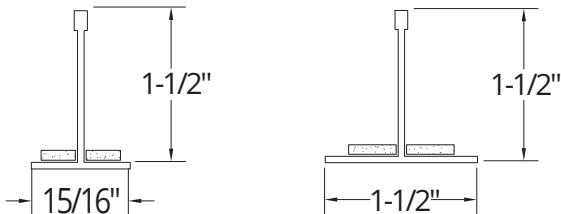
OVERLAPPING FRAME ALUMINUM EXTRUDED INSET FRAME

OVERLAPPING DOOR ALUMINUM EXTRUDED INSET DOOR

	A	B	C	D	Recommended Ceiling Cut-Out
SCS22	24"	3.94"	24.07"	24"	N/A
SCS24	24"	3.94"	48.07"	24"	N/A
SCG22	23.69"	3.94"	24.07"	23.69"	N/A
SCG24	23.69"	3.94"	48.07"	23.69"	N/A
SCF22	25.13"	3.94"	25.25"	25.13"	24.375" x 24.375"
SCF24	25.13"	3.94"	49.13"	25.13"	48.375" x 24.375"

(SCG) GRID COMPATIBILITY:

Spaced at 24" x 48" Centers



Notes:
Specifications and Dimensions are subject to change without notice.
For additional options and dimensional details please consult your New Star Lighting Representative.