

# 5322-5324

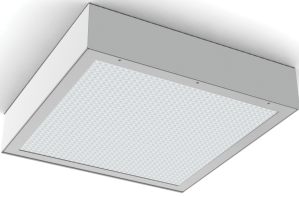
## CONFINEMENT SERIES

SURFACE LUMINAIRE

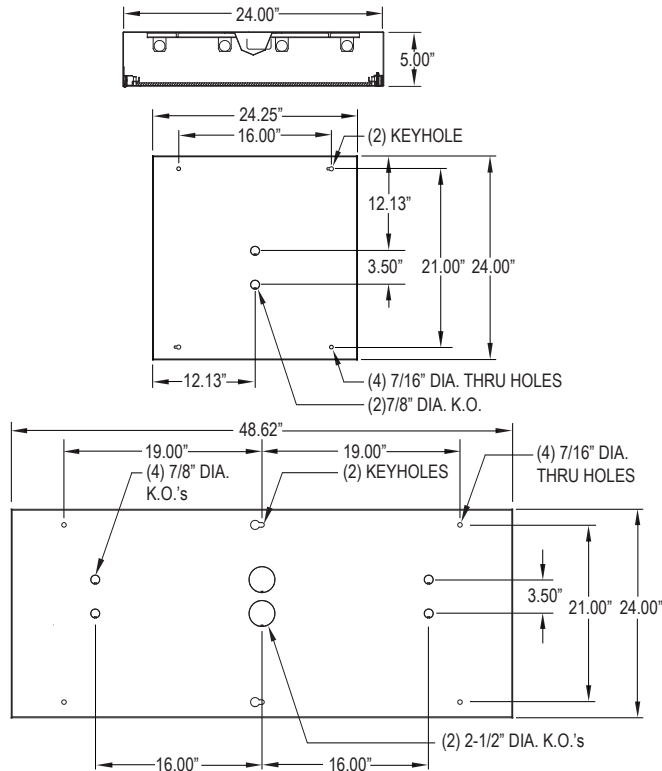
NON-CLAMSHELL DESIGN FOR MIN. TO MAX. SECURITY  
FLUORESCENT



Made in America



### DIMENSIONAL DATA



### ORDERING INFORMATION

Product Family	Gauge	# of Lamps	Lamp Type	# of Ballasts
<b>53</b> _				
5322 24" x 24-1/4" x 5"	A = 12 Ga. CRS B = 14 Ga. CRS C = 16 Ga. CRS D = 18 Ga. CRS E = 14 Ga. SS F = 16 Ga. SS (Brushed)	5322-5324 2 = 2 Lamp 3 = 3 Lamp 4 = 4 Lamp 6 = 6 Lamp (5322 only)	5322 17 = Linear 17W T8 14 = Linear 14W T5 24 = Linear 24W T5 HO 40 = 40 Twin 2Gx11 (2 Lamp only) U6 = 32W U-Lamp ≠ (6" leg spacing)	1 = 1 Ballast 2 = 2 Ballast
5324 24" x 48-5/8" x 5"	G = 18 Ga. SS (Brushed) H = 14 Ga. SS (Painted) J = 16 Ga. SS (Painted) K = 18 Ga. SS (Painted)		5324 32 = 32W T8 28 = 28W T5 54 = 54W T5 HO	

Outer Lens	Inner Lens	Voltage	Options

∅ = No Lens A = .125 Clear Poly. B = .156 Clear Poly. 1 = .187 Clear Poly. 2 = .250 Clear Poly. 3 = .375 Clear Poly.	4 = .500 Clear Poly. 5 = .187 Clear Temp. Glass 6 = .250 Clear Temp. Glass 7 = .375 Clear Temp. Glass <sup>^</sup> 8 = .500 Clear Temp. Glass <sup>^</sup> 9 = .750 Clear Temp. Glass <sup>^</sup>	∅ = No Lens A = .125 Pris. Acrylic B = .125 Pris. Poly. C = .156 Pris. Poly.	D = .187 Pris. Poly. E = .156 Pris. Temp. Glass F = .156 Pris. Acrylic G = .140 DR Acrylic	12 = 120V 27 = 277V 34 = 347V ■ UN = Universal (120V-277V)	DB = Ballast: Dimming (0-10V) E1 = Emerg. Ballast (450 Lumens)* ◀ E2 = Emerg. Ballast (1350 Lumens)* ◀ PR = Program. Rapid Start Ballast AH = Allenhead Screws with center pin reject NL = Fluorescent Night Light*	LN = LED Night Light. Consult factory for available color /temperatures. FZ = Fuse Holder* WL = Wet Location UV = .005 UV Absorbing Overlay
---	---	---	---	--	---	--

<sup>^</sup> Must Use 12 or 14 Gauge Frame  
<sup>\*</sup> Cannot use with universal voltage option  
 ◀ Consult factory for T5 availability  
 ■ Consult factory for lamp-ballast options  
 ≠ 4 lamp only (4 FT.)



PROJECT
TYPE:
PRODUCT
APPROVED
DATE:

### FEATURES

The New Star 5322-5324 Confinement fixture is designed for security application where recessing is not possible or where surface mounting is desired.

- 18-12 gauge die formed steel or stainless steel non-clam shell housing with full length continuous staked piano hinge with welded end.
- Maximum to super maximum security application
- Wide variety of lens options held in place with Z-Channel and weld studs
- Torx head center pin screws standard
- Black neoprene gasket around door frame to prevent light leaks
- Optional wet location

### APPLICATION

- Confinement
- Psychiatric Wards
- Detention Centers
- Public Housing Complexes
- Transportation Applications
- Athletic Facilities
- Locker Rooms

### SPECIFICATION FEATURES

- HOUSING:** Die formed, seam welded and, ground smooth (specify material and gauge). Incorporates a removable reflector unitized with all electrical components for easy installation and maintenance.
- FRAME:** Die formed one-piece frame with tightly closed corners. (material and gauge to match housing).
- HINGE:** 16 gauge full length continuous, staked piano hinge, with welded ends. to prevent removal (material to match housing).
- LENS / LENS RETENTION:** Lens per specification (see options) and secured by "Z" retainers with weld studs spaced six inches apart for maximum strength.
- ELECTRONICS:** Electronic Ballast <10% THD standard. Lamps by others.
- LED NIGHT LIGHT:** Integrated switch allows light selection at 100%,70%,40% and 10% levels
- GASKET:** Black neoprene gasket around door frame to prevent light leaks
- FASTENERS:** Tamper resistant countersunk, flat head Torx screws with center pin reject
- FINISH:** White powdercoat finish following an iron phosphate pre-treatment.
- LABEL:**