

5322-5324

CONFINEMENT SERIES

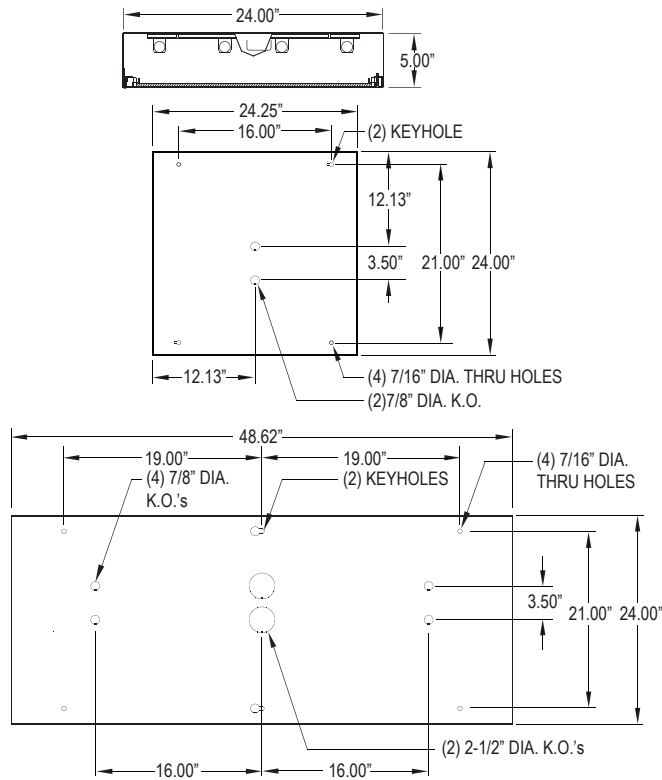
SURFACE LUMINAIRE

NON-CLAMSHELL DESIGN FOR MIN. TO MAX. SECURITY
FLUORESCENT/LED



PROJECT:
TYPE:
PRODUCT:
APPROVED:
DATE:

DIMENSIONAL DATA



ORDERING INFORMATION

Product Family	Gauge	# of Lamps	Lamp Type	# of Ballasts
53				
5322 24" x 24-1/4" x 5"	A = 12 Ga. CRS B = 14 Ga. CRS (Brushed) C = 16 Ga. CRS D = 18 Ga. CRS (Painted) E = 14 Ga. SS F = 16 Ga. SS (Brushed)	Fluorescent: 5322-5324 2 = 2 Lamp 3 = 3 Lamp 4 = 4 Lamp 6 = 6 Lamp(5322 only) LED 5322: L2 = LED 2 Row (25W) L3 = LED 3 Row (37.5W) L4 = LED 4 Row (50W) L5 = LED 5 Row (62.5W) L6 = LED 6 Row (75W)	Fluorescent: 5322 17 = Linear 17W T8 14 = Linear 14W T5 24 = Linear 24W T5 HO 40 = 40 Twin 2Gx11 (2 Lamp only) U6 = 32W U-Lamp ≠ (6" leg spacing)	Fluorescent: 1 = Ballast 2 = Ballast
5324 24" x 48-5/8" x 5"	G = 18 Ga. SS (Brushed) H = 14 Ga. SS (Painted) J = 16 Ga. SS (Painted) K = 18 Ga. SS (Painted)	LED 5324: L2 = LED 2 Row (50W) L3 = LED 3 Row (75W) L4 = LED 4 Row (100W) L5 = LED 5 Row (125W) L6 = LED 6 Row (150W) L7 = LED 7 Row (175W) L8 = LED 8 Row (200W)	Fluorescent: 5324 32 = 32W T8 28 = 28W T5 54 = 54W T5 HO LED: 35 = White 3500° K 40 = White 4000° K 50 = White 5000° K	LED: 1 = Driver 2 = Driver 3 = Driver 4 = Driver

Outer Lens	Inner Lens	Voltage	Options
Ø = No Lens A = .125 Clear Poly. B = .156 Clear Poly. 1 = .187 Clear Poly. 2 = .250 Clear Poly. 3 = .375 Clear Poly.	4 = .500 Clear Poly. 5 = .187 Clear Temp.Glass 6 = .250 Clear Temp.Glass 7 = .375 Clear Temp.Glass [^] 8 = .500 Clear Temp.Glass [^] 9 = .750 Clear Temp.Glass [^]	Ø = No Lens A = .125 Pris. Acrylic B = .125 Pris. Poly. C = .156 Pris. Poly. D = .187 Pris. Poly.	E = .156 Pris. Temp. Glass F = .156 Pris. Acrylic G = .140 DR Acrylic LC3 = .125 White Frosted Polycarbonate
12 = 120V 27 = 277V 34 = 347V ■ UN = Universal (120V-277V)	12 = 120V 27 = 277V 34 = 347V ■ UN = Universal (120V-277V)	DB = Ballast: Dimming (0-10V) E1 = Emerg.Ballast (450 Lumens)* E2 = Emerg.Ballast (1350 Lumens)* PR = Program. Rapid Start Ballast AH = Allenhead Screws with center pin reject NL = Fluorescent Night Light*	LN = LED Night Light. Consult factory for available color /temperatures. FZ = Fuse Holder* WL = Wet Location UV = .005 UV Absorbing Overlay

[^] Must Use 12 or 14 Gauge Frame
* Cannot use with universal voltage option

◀ Consult factory for T5 availability
■ Consult factory for lamp-ballast options
≠ 4 lamp only (4 FT.)
◆ Not available in LED

FEATURES

The New Star "5322-5324" Confinement fixture is designed for security application where recessing is not possible or where surface mounting is desired.

- 18-12 gauge die formed steel or stainless steel non-clam shell housing with full length continuous staked piano hinge with welded end.
- Maximum to super maximum security application
- Wide variety of lens options held in place with Z-Channel and weld studs
- Torx head center pin screws standard
- Black neoprene gasket around door frame to prevent light leaks
- Optional wet location

APPLICATION

- Confinement
- Psychiatric Wards
- Detention Centers
- Public Housing Complexes
- Transportation Applications
- Athletic Facilities
- Locker Rooms

SPECIFICATION FEATURES

HOUSING:

Die formed, seam welded and, ground smooth (specify material and gauge). Incorporates a removable reflector unitized with all electrical components for easy installation and maintenance.

FRAME:

Die formed one-piece frame with tightly closed corners. (material and gauge to match housing).

HINGE:

16 gauge full length continuous, staked piano hinge, with welded ends. to prevent removal (material to match housing).

LENS / LENS RETENTION:

Lens per specification (see options) and secured by "Z" retainers with weld studs spaced six inches apart for maximum strength.

ELECTRONICS:

Fluorescent:
Electronic Ballast <10% THD standard. RIF available. Lamps by others.

LED:

Available in three standard color temperatures 3500°K, 4000°K & 5000°K. Other color temperatures available, consult factory.

LED NIGHT LIGHT:

Integrated switch allows light selection at 100%, 70%, 40% and 10% levels

GASKET:

Black neoprene gasket around door frame to prevent light leaks

FASTENERS:

Tamper resistant countersunk, flat head Torx screws with center pin reject

FINISH:

White powercoat finish following an iron phosphate pre-treatment.

LABEL:



Notes:

Specifications and Dimensions are subject to change without notice. For additional options and dimensional details please consult your New Star Lighting Representative. For specific electronic ballast, specify brand and catalog number.



www.newstarlighting.com

New Star - 4000 S. Bell St. - Chicago, IL 60609 - TEL (773) 847-1400 - FAX (773) 254-6811 - V013