

551-552-554

CONFINEMENT SERIES

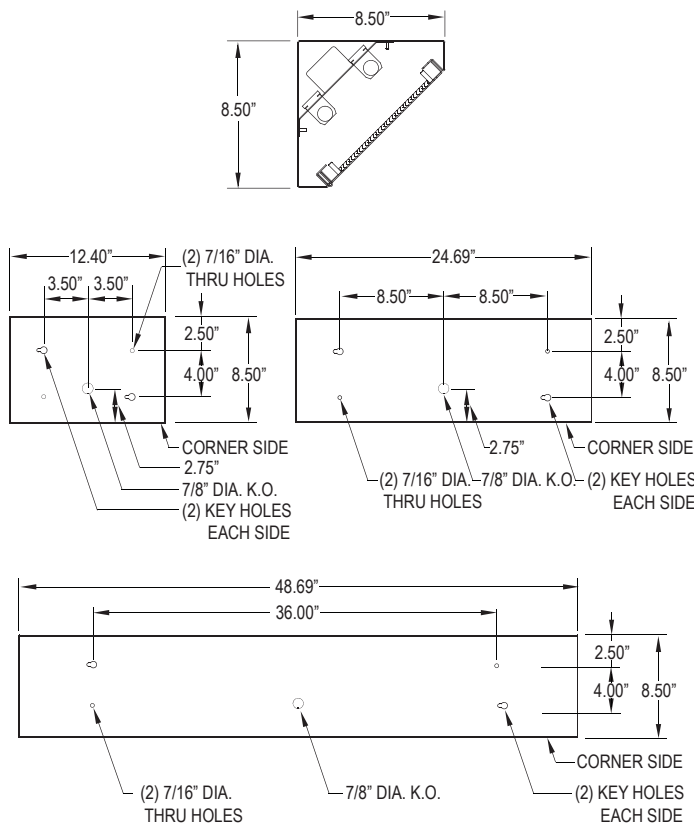
CORNER LUMINAIRE

NON-CLAMSHELL DESIGN FOR MIN. TO MAX. SECURITY
FLUORESCENT/LED



| |
|-----------|
| PROJECT: |
| TYPE: |
| PRODUCT: |
| APPROVED: |
| DATE: |

DIMENSIONAL DATA



FEATURES

The New Star™ 551-552-554™ Confinement corner mount fixture is design for security applications to meet max security use

- 18-14 gauge non-clamshell corner luminaire
- 16 gauge concealed full length continuous staked piano hinge with welded ends
- Lens options held in place with Z-Channel and weld studs
- Black neoprene gasket around door frame to prevent light leaks
- Tamper resistance Torx head center pin screws standard
- Wet location optional

APPLICATION

- Confinement
- Psychiatric Wards
- Detention Centers
- Public Housing Complexes
- Transportation Applications
- Athletic Facilities
- Locker Rooms

SPECIFICATION FEATURES

HOUSING:

Die formed, seam welded, and ground smooth (specify material and gauge). Incorporates a removable reflector unitized with all electrical components for easy installation and maintenance.

FRAME:

Die formed one-piece frame with tightly closed corners. (material and gauge to match housing).

HINGE:

16 gauge full length continuous, staked piano hinge, with welded ends. to prevent removal (material to match housing).

LENS:

Polycarbonate or tempered glass lens sealed to frame.

LENS RETAINER:

14 gauge cold rolled retaining angles attached to through door studs for positive lens clamping

ELECTRONICS:

Fluorescent:
Electronic Ballast <10% THD standard. RIF available. Lamps by others.

LED:

Available in three standard color temperatures 3500°K, 4000°K & 5000°K. Other color temperatures available, consult factory.

LED NIGHT LIGHT:

Integrated switch allows light selection at 100%, 70%, 40% and 10% levels

GASKET:

Black neoprene gasket around door frame to prevent light leaks

FASTENERS:

Tamper resistant countersunk, flat head Torx screws with center pin reject

FINISH:

White powercoat finish following an iron phosphate pre-treatment.

LABEL:



ORDERING INFORMATION

Product Family Gauge # of Lamps Lamp Type # of Ballasts/Drivers

55_ - - - - -

| | | | | | | | | |
|----------------------------------|--|---|--|--|--|--|---|--|
| 551 8-1/2" x 12-3/8" x 8-1/2" | A = 12 Ga. CRS B = 14 Ga. CRS C = 16 Ga. CRS D = 18 Ga. CRS E = 14 Ga. SS F = 16 Ga. SS | G = 18 Ga. SS (Brushed) H = 14 Ga. SS I = 16 Ga. SS (Painted) J = 16 Ga. SS (Painted) K = 18 Ga. SS (Painted) | Fluorescent: 551 1 = 1 Lamp 2 = 2 Lamp 3 = 3 Lamp | LED 552: L2 = 2 Row (25W) L3 = 3 Row (37.5W) | Fluorescent: 551 18 = 18W Triple Gx24q-2 8Q = 18W Quad G24q-2 26 = 26W Triple Gx24q-3 6Q = 26W Quad G24q-3 32 = 32W Triple Gx24q-3 42 = 42W Triple Gx24q-4 | Fluorescent: 552 17 = Lin. 17W T8 14 = Lin. 14W T5 24 = Lin. 24W T5 HO 40 = 40 Twin 2Gx11 (1 lamp only) | LED: 35 = White 3500°K 40 = White 4000°K 50 = White 5000°K | Fluorescent: 1 = 1 Ballast 2 = 2 Ballast LED: 1 = Driver 2 = Driver |
|----------------------------------|--|---|--|--|--|--|---|--|

Outer Lens / Inner Lens Voltage Options

- - - - - / - - - - - - - - - - - - - - -

| | | | | | | |
|---|---|--|---|---|---|--|
| <p>Ø = No Lens A = .125 Clear Poly. B = .156 Clear Poly. 1 = .187 Clear Poly. 2 = .250 Clear Poly. 3 = .375 Clear Poly.</p> | <p>4 = .500 Clear Poly. 5 = .187 Clear Temp.Glass 6 = .250 Clear Temp.Glass 7 = .375 Clear Temp.Glass ^ 8 = .500 Clear Temp.Glass ^ 9 = .750 Clear Temp.Glass ^</p> | <p>Ø = No Lens A = .125 Pris. Acrylic B = .125 Pris. Poly. C = .156 Pris. Poly. D = .187 Pris. Poly.</p> | <p>E = .156 Pris. Temp. Glass F = .156 Pris. Acrylic G = .140 DR Acrylic LC3 = .125 White Frosted Poly.</p> | <p>12 = 120V 27 = 277V 34 = 347V ■ UN = Universal (120V-277V)</p> | <p>DB = Ballast: Dimming (0-10V) * E1 = Emerg.Ballast (450 Lumens) * ◀◀ E2 = Emerg.Ballast (1350 Lumens)* ◀◀ PR = Program. Rapid Start Ballast DLN = Dimmable LED Night Light. Consult factory for available color / temperatures. NL = Fluorescent Night Light * TH = Torx Head Screws</p> | <p>AH = Allenhead Screws with center pin reject FZ = Fuse Holder * WL = Wet Location UV = .005 UV Absorbing Overlay PF = Plaster Frame & Yolk CB = Cross Bar LN = LED Night Light (3500°K)</p> |
|---|---|--|---|---|---|--|

^ Must Use 12 or 14 Gauge Frame
* Cannot use with universal voltage option

◀ Consult factory for T5 availability
■ Consult factory for lamp-ballast options
◆ Not available in LED

Notes:
Specifications and Dimensions are subject to change without notice. For additional options and dimensional details please consult your New Star Lighting Representative. For specific electronic ballast, specify brand and catalog number.

