

AURAMED 12-14 GRID

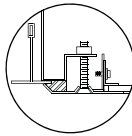
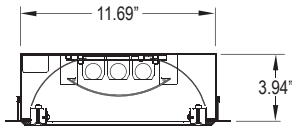
HEALTHCARE SERIES
GLAREFREE GRID LUMINAIRE
FLUORESCENT/LED



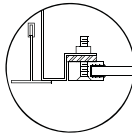
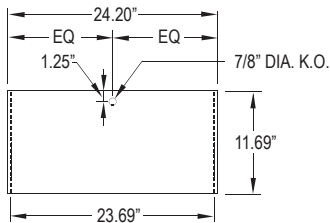
Made in America

PROJECT:
TYPE:
PRODUCT:
APPROVED:
DATE:

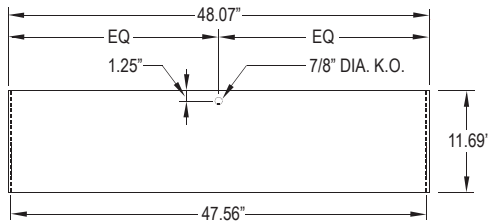
DIMENSIONAL DATA



OVERLAPPING FRAME



ALUMINUM EXTRUDED
INSET FRAME



FEATURES

The New Star "AuraMed G12-G14" Glare free Indirect fixture is designed for use in surgical suites, medical settings which employ laminar or turbulent cleanroom airflow and areas where clean is critical.

- Enclosed design to insure ingress protection
- Standard overlapping frame made from single sheet CRS with beveled edges
- Inset frame fabricated from extruded aluminum
- Sealed, reinforced mitered corners
- Gasketed for contamination control
- Lens options for different high tech medical needs
- Smooth surface for minimal maintenance
- Accommodates extreme cleaning protocols
- IP65 rated

APPLICATION

- Patient Examination Rooms
- Psychiatric Wards
- Hospitals
- High Tech Manufacturing
- Laboratories

SPECIFICATION FEATURES

HOUSING:

20 gauge formed cold rolled steel housing with continuous seam welds. Aluminum and stainless steel option available. Manufactured in accordance with NSF standards.

FRAME:

Inset extruded door available in anodized aluminum or white painted aluminum. Overlapping door frame available in aluminum, CRS and stainless steel. Frame fastened to housing via aircraft cable.

LENS:

Acrylic lens with optional RFI and symmetric/asymmetric pattern, smooth side out. Overlapping frame uses a rail hold down system with silicone sealant.

INNER LAMP DIFFUSER:

Perforated metal screen painted white. Lined with .020" thick white acrylic diffuser.

ELECTRONICS:

Fluorescent:
Electronic Ballast <10% THD standard. RIF available. Lamps by others.

LED: Constant current

Available in three standard color temperatures 3500°K, 4000°K & 5000°K. Other color temperatures available, consult factory.

LED NIGHT LIGHT:

Integrated switch allows light selection at 100%, 70%, 40% and 10% levels

GASKET:

Closed cell PVC or extruded silicone gaskets prevent air contaminants from entering room.

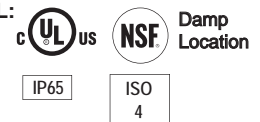
FASTENERS:

Phillips flat head screws with captive cage

FINISH:

White Antimicrobial powdercoat finish following iron phosphate pre-treatment.

LABEL:



ORDERING INFORMATION

Product Family	Housing Matl.	Frame	# of Lamps	Lamp Type
AAG_				
AAG12 11-11/16" x 24-3/16" x 3-15/16"	HC = 20Ga. CRS (Standard)	Overlap Frame Options IP65:	Fluorescent: AAG12-AAG14 2 = 2 Lamp 3 = 3 Lamp	Fluorescent AAG12: 17 = Linear 17W T8 14 = Linear 14W T5 24 = Linear 24W T5 HO Fluorescent AAG14: 32 = Linear 32W T8 28 = Linear 28W T5 54 = Linear 54W T5 HO
AAG14 11-11/16" x 48-1/16" x 3-15/16"	HS = 20Ga. S.S. (Painted) HP = 20Ga. S.S. (Painted) HA = Alum. (Painted)	Inset Frame Options: IE = Extruded Alum.No IP65 (Painted) No IP65 IC = 18Ga. CRS IP65 IA = Alum.(Painted) IP65 IB = 18Ga. S.S. (Brushed) IP65 IS = 18Ga. S.S. (Painted) IP65	LED AAG12: L2 = LED 2 Rw (25W) L3 = LED 3 Rw (37.5W) L4 = LED 4 Rw (50W) LED AAG14: L2 = LED 2 Rw (50W) L3 = LED 3 Rw (75W) L4 = LED 4 Rw (100W)	LED: 35 = White 3500°K 40 = White 4000°K 50 = White 5000°K
# Ballasts/Drivers	Lens	Voltage	Options	
Fluorescent: 1 = Ballast 2 = Ballast LED: 1 = Driver 2 = Driver 3 = Driver 4 = Driver	1 = .187 Clear Polycarbonate 2 = .250 Clear Polycarbonate ^ 5 = .187 Clear Tempered Glass ^ 6 = .250 Clear Tempered Glass ^	12 = 120V 27 = 277V 34 = 347V ■ UN = Universal (120V-277V)	DB = Dimming Ballast (0-10V) *◆ DM = Dimming Driver (0-10V) SDM = Step Dimming Module PR = Program Rapid Start FZ = Fuse * NL = Fluorescent Night Light * LN = LED Night Light. Consult factory for available color/temperatures.	E1 = Emerg. Bat. Pack(450 Lumens) *◆◆ E2 = Emerg. Bat. Pack (1100 Lumens) *◆◆ EL1= Emerg. Bat. LED Low EL2= Emerg. Bat. LED High RF = RIF (Radio Interference Filter)* TH = Torx Head screws (with center pin) TM = Tandem Mount

* Cannot use with universal voltage option
^ Cannot use with inset door option

◆ Consult factory for T5 availability
■ Consult factory for lamp-ballast options

Notes:
Specifications and Dimensions are subject to change without notice. For additional options and dimensional details please consult your New Star Lighting Representative. For specific electronic ballast, specify brand and catalog number.

