

NSR SERIES LED

NSRO/NSRC/NSRE

SPECIFICATION FEATURES

- HOUSING:** One-piece marine grade die-cast aluminum.
- GUARD:** Molded from UV-stabilized polycarbonate.
- LENS:** Polycarbonate injection molded lens with radial prisms to provide superior illumination. Optional ribbed clear prismatic or ribbed opal lens.
- LED:** Available in three color temperatures 3500°K, 4000°K and 5000°K. 19.2W on 4 LED modules.
- REFLECTOR:** Aluminum reflector to serve as heat sink and unitized with electrical components.
- FASTENERS:** Tamper resistant Torx head screws with center pin reject.
- FINISH:** Extremely durable oven baked polyester powder coat following a 5 stage iron phosphate pre-treatment in black, bronze or white.
- GASKET:** One piece die cut black EDPM foam rubber with adhesive backing to affix to housing. Extruded and spliced EDPM ribbed rubber gasket for lens.



APPLICATION:

VR Architectural Settings, Public Areas, Corridors, Stairways, Underpasses, Parking Garages, Restrooms, Lobbies, Schools, and more.

MOUNTING:

J-Box knock out and level bar for quick and easy installation.

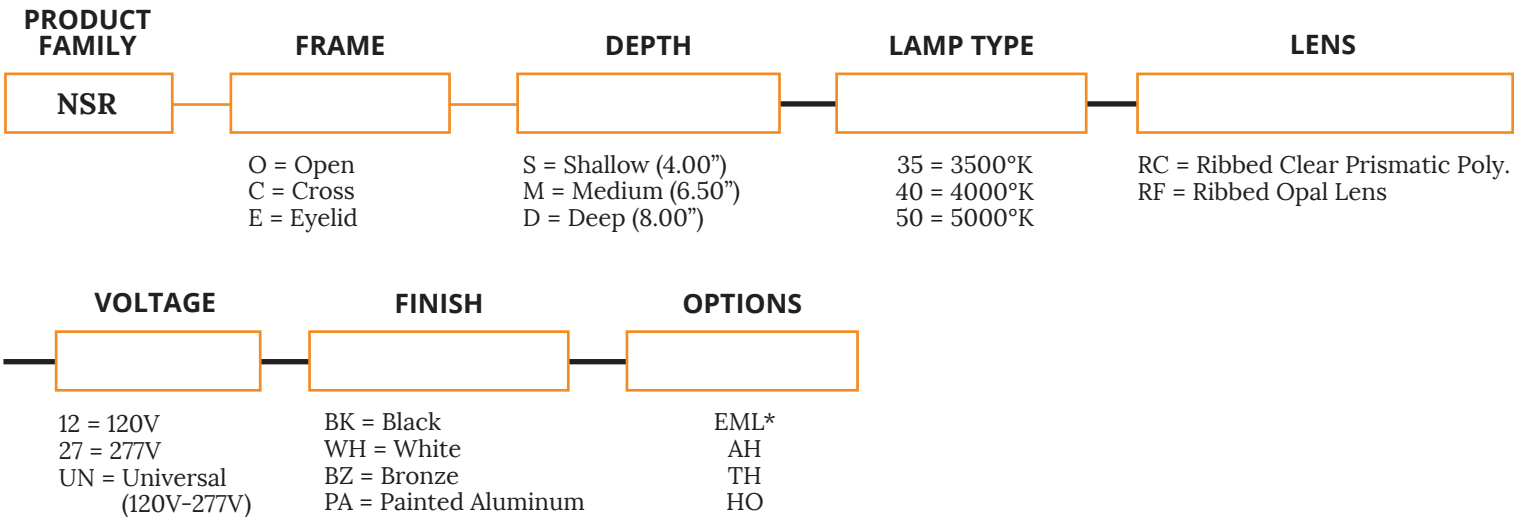
LABEL:

Fixture is certified to UL standards by Intertek Testing Laboratories.



ORDERING INFORMATION

Ex: NSED-40-RC-UN-BK



KEY

- EML = Emergency Battery (remote)*
AH = Allen Head Screws (with center pin)
TH = Torx Head Screws (with center pin)
HO = High Output (1400lm) - 5000°K only

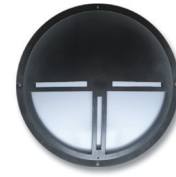
*Cannot use with UN voltage



NSR OPEN (NSRO)



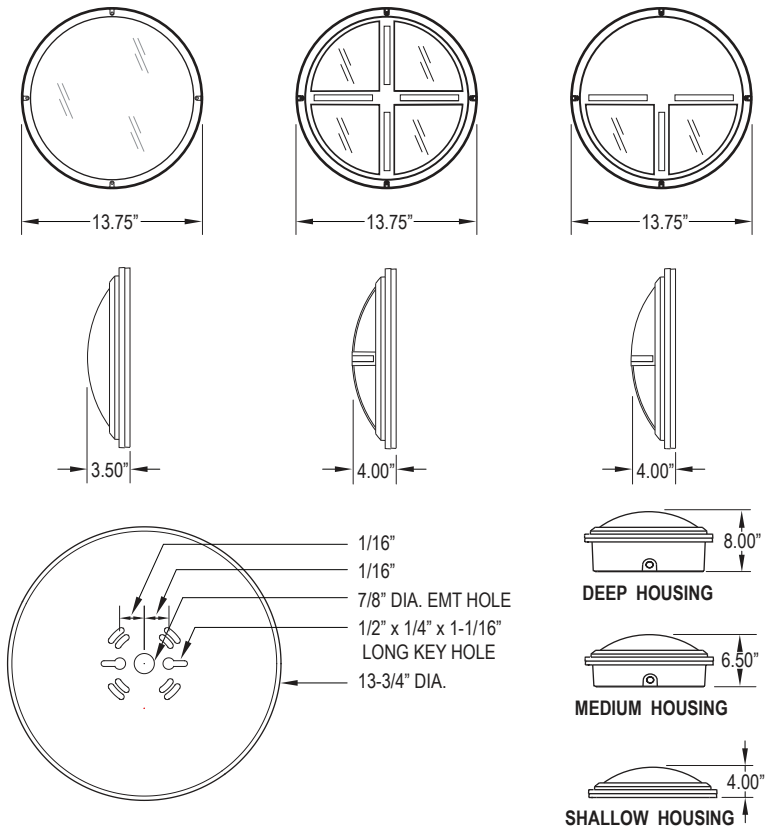
NSR CROSS (NSRC)



NSR EYE LID (NSRE)

Notes: Specifications and Dimensions are subject to change without notice. If lamp type is not specified at time of quote or order, fixture will be set with 3500°K. For additional options and dimensional details please consult your New Star Lighting Representative.

DIMENSIONAL DATA



Notes:
 Specifications and Dimensions are subject to change without notice.
 For additional options and dimensional details please consult your New Star Lighting Representative.

NSR SERIES FLUORESCENT

NSRO/NSRC/NSRE

SPECIFICATION FEATURES

- HOUSING:** One-piece marine grade die-cast aluminum.
- GUARD:** Molded from UV-stabilized polycarbonate.
- LENS:** Polycarbonate injection molded lens with radial prisms to provide superior illumination. Optional ribbed clear prismatic or ribbed opal lens.
- ELECTRONICS:** Electronic ballast <10% THD standard.
- REFLECTOR:** Aluminum reflector to serve as heat sink and unitized with electrical components.
- FASTENERS:** Tamper resistant Torx head screws with center pin reject.
- FINISH:** Extremely durable oven baked polyester powder coat following a 5 stage iron phosphate pre-treatment in black, bronze or white.
- GASKET:** One piece die cut black EDPM foam rubber with adhesive backing to affix to housing. Extruded and spliced EDPM ribbed rubber gasket for lens.



APPLICATION:

VR Architectural Settings, Public Areas, Corridors, Stairways, Underpasses, Parking Garages, Restrooms, Lobbies, Schools, and more.

MOUNTING:

J-Box knock out and level bar for quick and easy installation.

LABEL:

Fixture is certified to UL standards by Intertek Testing Laboratories.



ORDERING INFORMATION

Ex: NSOS-1/13Q-RC-UN-BK

| PRODUCT FAMILY | FRAME | DEPTH | # OF LAMPS | LAMP TYPE | |
|--|--|--|---------------------------|--|--|
| NSR | | | | | |
| | O = Open C = Cross E = Eyelid | S = Shallow (4.00") M = Medium (6.50") D = Deep (8.00") | 1 = 1 Lamp 2 = 2 Lamps | Selected 1 Lamp: | Selected 2 Lamps: |
| | | | | 13 = 13W Triple Gx24q-1 13Q = 13W Quad G24q-1 18 = 18W Triple Gx24q-2 18Q = 18W Quad G24q-2 26 = 26W Triple Gx24q-3 26Q = 26W Quad G24q-3 32 = 32W Triple Gx24q-3 42 = 42W Triple Gx24q-4** | 13 = 13W Triple Gx24q-1 13Q = 13W Quad G24q-1 18 = 18W Triple Gx24q-2 18Q = 18W Quad G24q-2 26 = 26W Triple Gx24q-3*** 26Q = 26W Quad G24q-3*** 32 = 32W Triple Gx24q-3*** 42 = 42W Triple Gx24q-4*** |
| LENS | VOLTAGE | FINISH | OPTIONS | | |
| | | | | | |
| RC = Ribbed Clear Prismatic Poly. RF = Ribbed Opal Lens | 12 = 120V 27 = 277V 34 = 347V UN = Universal (120V-277V) | BK = Black WH = White BZ = Bronze PA = Painted Aluminum | EM* AH TH HO | | |

KEY

- EM = Emergency Ballast (remote)*
AH = Allen Head Screws (with center pin)
TH = Torx Head Screws (with center pin)

- *Cannot use with UN voltage
** Not available with Shallow depth
*** Not available with Shallow or Medium depth



**NSR OPEN
(NSRO)**



**NSR CROSS
(NSRC)**



**NSR EYE LID
(NSRE)**

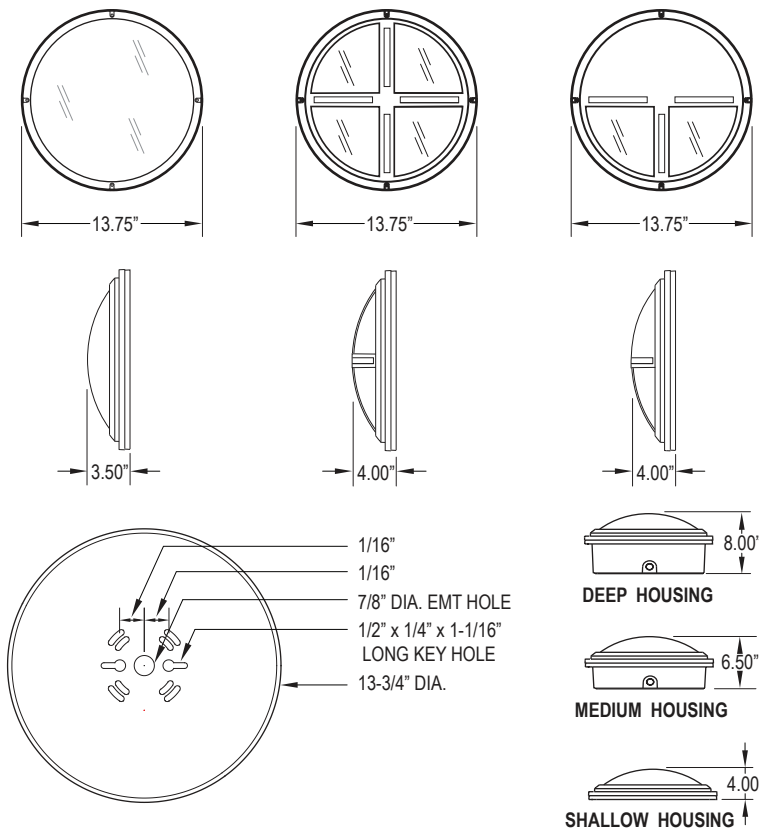
Notes:
Specifications and Dimensions are subject to change without notice.
For additional options and dimensional details please consult your New Star Lighting Representative.

NSR SERIES FLUORESCENT

NSRO/NSRC/NSRE



DIMENSIONAL DATA



Notes:
 Specifications and Dimensions are subject to change without notice.
 For additional options and dimensional details please consult your New Star Lighting Representative.