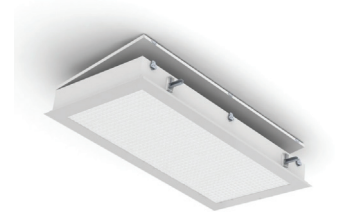


STARCLEAN TOP ACCESS 22-24 LED

STG22/STG24/STF22/STF24

SPECIFICATION FEATURES

- HOUSING:** 18 gauge formed cold rolled steel housing with continuous seam welds. Aluminum and stainless steel options available.
- FRAME:** Overlapping doorframe available in aluminum, cold rolled steel, and stainless steel. Frame fastened to housing via aircraft cable.
- LENS:** Acrylic lens with smooth side out. Alternate lens options available including Prismatic Polycarbonate and a White Frosted Polycarbonate. Overlapping frame uses a rail hold down system.
- LED:** Available in three color temperatures 3500°K, 4000°K and 5000°K. Other color temperatures available, consult factory. Standard 0-10V driver provided. Optional dimming function (DM) with 10-100% range.
- FASTENERS:** Philips flat head screws with captive cage nuts.
- FINISH:** White antimicrobial powder coat finish following iron phosphate pre-treatment.
- GASKET:** Closed cell EPDM or extruded silicone gaskets prevent air contaminations from entering the fixture.



APPLICATION:

Cleanroom, Hospital, Hi-Tech Manufacturing, Laboratory, Food Processing Facilities, and more.

MOUNTING:

Flange fixtures come with adjustable 90° swing arm for easy installation.

LABEL:

Fixture is certified to UL standards for Damp Location. Certified IP65, ISO4, and NSF.



ORDERING INFORMATION

Ex: STG22-HC/OC-L4402-B-UN

PRODUCT FAMILY	MOUNTING	NOMINAL SIZE <small>*Dimensional Data Pg. 2</small>	HOUSING	OVERLAP FRAME	LUMEN OUTPUT** <small>*Performance Data Pg. 2</small>
ST	G = Grid F = Flange	22 = 2x2 24 = 2x4	HC= 18Ga. CRS (standard) HS= 18Ga. SS HP= 18Ga. SS (painted) HA= .050Ga. Alum. (painted)	IP65: OC=18Ga.CRS(Standard) OS=18Ga.S.S(Brushed) OP=18Ga.S.S.(Painted) OA= .050 Alum. (Painted)	L2 = Low L4 = Standard L6 = Medium L8 = High

LAMP TYPE	CIRCUITS	LENS	VOLTAGE	OPTIONS
35 = 3500°K 40 = 4000°K 50 = 5000°K	1 = 1 Circuit 2 = 2 Circuits	A = .125 Prismatic Acrylic B = .125 Prismatic Poly. C = .156 Prismatic Poly. D = .187 Prismatic Poly. E = .125 White Frosted Poly.	12 = 120V 27 = 277V 34 = 347V UN = Universal (120V-277V)	FZ* EL1 DM1 EL2 SD2▲ RF* SD3▲ TH SD3A▲ DM

KEY

- FZ = Fuse*
DM1 = 0-10V dimming with 1-100% range
SD2 = Step Dim. Module (50-100%)▲
SD3 = Step Dim. Module (25-50-100%)▲
SD3A = Step Dim. Module (33-66-100%)▲

- EL1 = Emerg. Bat. LED Low
EL2 = Emerg. Bat. LED High
RF = (RIF) Radio Interference Filter*
TH = Torx Head screws (with center pin)
DM = 0-10V dimming with 10-100% range.

- * Cannot use with UN voltage
▲ Not available in 277V
.. Subject to change

Dimming wires will be extended outside of fixture.

Notes:
Specifications and Dimensions are subject to change without notice.
For additional options and dimensional details please consult your New Star Lighting Representative.

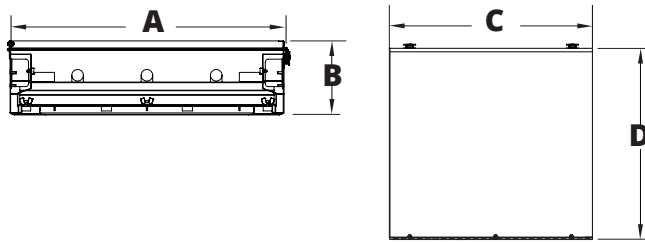
STARCLEAN TOP ACCESS 22-24 LED

STG22/STG24/STF22/STF24

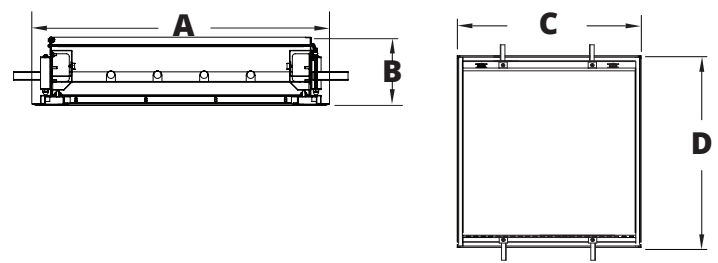


DIMENSIONAL DATA

GRID MOUNTING



FLANGE MOUNTING



	A	B	C	D	Rec. Ceiling Cut-Out
STG22	23.69"	6.41"	24.11"	23.69"	-
STG24	23.69"	6.41"	48.12"	23.69"	-
STF22	26.50"	6.75"	25.13"	26.13"	24.375" x 24.375"
STF24	26.50"	6.75"	50.13"	26.13"	24.375" x 48.375"

PERFORMANCE DATA**

MODEL	OUTPUT	LAMP TYPE	LUMENS DELIVERED	EFFICACY (lm/W)	INPUT POWER (W)
ST22	Low	3500°K	3000	120	25
		4000°K	3125	125	25
		5000°K	3250	130	25
	Standard	3500°K	6000	120	50
		4000°K	6250	125	50
		5000°K	6500	130	50
	Medium	3500°K	8625	115	75
		4000°K	9000	120	75
		5000°K	9375	125	75
	High	3500°K	11500	115	100
		4000°K	12000	120	100
		5000°K	12500	125	100
ST24	Low	3500°K	6000	120	50
		4000°K	6250	125	50
		5000°K	6500	130	50
	Standard	3500°K	12000	120	100
		4000°K	12500	125	100
		5000°K	13000	130	100
	Medium	3500°K	17250	115	150
		4000°K	18000	120	150
		5000°K	18750	125	150
	High	3500°K	23000	115	200
		4000°K	24000	120	200
		5000°K	25000	125	200

Displayed information is with a .125 Prismatic Polycarbonate. Subject to change without notice. Visit www.newstarlighting.com for additional information and IES files.

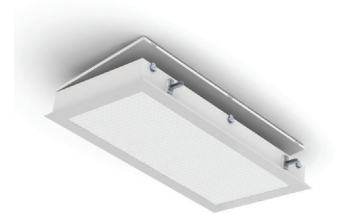
**Specifications, Performance Data and Dimensions are subject to change without notice.
For additional options and dimensional details please consult your New Star Lighting Representative.

STARCLEAN TOP ACCESS 22-24 FLUORESCENT

STG22/STG24/STF22/STF24

SPECIFICATION FEATURES

- HOUSING:** 18 gauge formed cold rolled steel housing with continuous seam welds. Aluminum and stainless steel options available.
- FRAME:** Overlapping doorframe available in aluminum, cold rolled steel, and stainless steel. Frame fastened to housing via aircraft cable.
- LENS:** Acrylic lens with smooth side out. Alternate lens options available including Prismatic Polycarbonate and a White Frosted Polycarbonate. Overlapping frame uses a rail hold down system.
- ELECTRONICS:** Electronic ballast <10% THD standard. Lamps by others.
- FASTENERS:** Philips flat head screws with captive cage nuts.
- FINISH:** White antimicrobial powder coat finish following iron phosphate pre-treatment.
- GASKET:** Closed cell EPDM or extruded silicone gaskets prevent air contaminations from entering the fixture.



APPLICATION:
Cleanroom, Hospital, Hi-Tech Manufacturing, Laboratory, Food Processing Facilities, and more.

MOUNTING:
Flange fixtures come with adjustable 90° swing arm for easy installation.

LABEL:
Fixture is certified to UL standards for Damp Location. Certified IP65, ISO4 and NSF.



ORDERING INFORMATION

Ex: STF22-HC/OC-3242-D-27-DB

PRODUCT FAMILY	MOUNTING	NOMINAL SIZE <small>*Dimensional Data Pg. 2</small>	HOUSING	OVERLAP FRAME	# OF LAMPS
ST	G = Grid F = Flange	22 = 2x2 24 = 2x4	HC= 20Ga. CRS (standard) HS= 20Ga. SS HP= 20Ga. SS (painted) HA= .050Ga. Alum. (painted)	IP65: OC=18Ga.CRS(Standard) OS=18Ga.S.S(Brushed) OP=18Ga.S.S.(Painted) OA= .050 Alum. (Painted)	2 = 2 Lamps 3 = 3 Lamps

LAMP TYPE	# OF BALLASTS	LENS	VOLTAGE	OPTIONS
2x2: 14 = Lin. 14W T5 17 = Lin. 17W T8 24 = Lin. 24W T5 HO	1 = 1 Ballast 2 = 2 Ballasts	A = .125 Prismatic Acrylic B = .125 Prismatic Poly. C = .156 Prismatic Poly. D = .187 Prismatic Poly. E = .125 White Frosted Poly.	12 = 120V 27 = 277V 34 = 347V ■ UN = Universal (120V-277V)	DB* E1* ◀ PR E2* ◀ FZ* RF* TH
2x4: 28 = Lin. 28W T5 32 = Lin. 32 T8 54 = Lin. 54 T5 HO				

KEY

DB = Dimming Ballast*
PR = Program Rapid Start
FZ = Fuse*

E1 = Emerg. Battery Pack (450 Lumens)* ◀
E2 = Emerg. Battery Pack (1100 Lumens)* ◀
RF = RIF (Radio Interference Filter)*
TH = Torx Head screws (with center pin)

* Cannot use with UN voltage
■ Consult factory for lamp-ballast options
◀ Consult factory for T5 availability
▲ Not available in 277V

Notes:
Specifications and Dimensions are subject to change without notice.
For additional options and dimensional details please consult your New Star Lighting Representative.

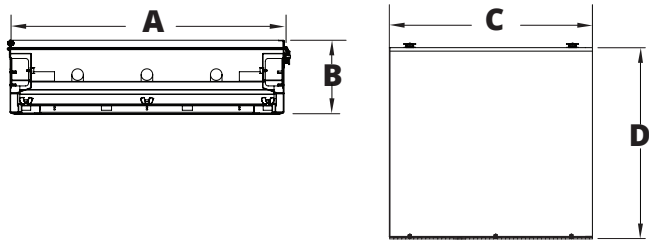
STARCLEAN TOP ACCESS 22-24 FLUORESCENT

STG22/STG24/STF22/STF24

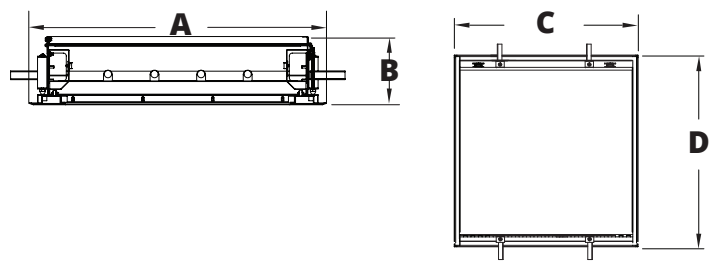


DIMENSIONAL DATA

GRID MOUNTING



FLANGE MOUNTING



	A	B	C	D	Rec. Ceiling Cut-Out
STG22	23.69"	6.41"	24.11"	23.69"	-
STG24	23.69"	6.41"	48.12"	23.69"	-
STF22	26.50"	6.75"	25.13"	26.13"	24.375" x 24.375"
STF24	26.50"	6.75"	50.13"	26.13"	24.375" x 48.375"

Notes:
 Specifications and Dimensions are subject to change without notice.
 For additional options and dimensional details please consult your New Star Lighting Representative.