

STARCLEAN CORNER 12-14 LED

SCC12/SCC14

SPECIFICATION FEATURES

- HOUSING:** 20 gauge formed cold rolled steel housing with continuous seam welds. Aluminum and stainless steel options available.
- FRAME:** Inset and overlapping doorframe available in aluminum, cold rolled steel, and stainless steel. Extruded inset door available in anodized aluminum or white painted aluminum. Frame held to housing via aircraft cable.
- LENS:** Acrylic lens with smooth side out. Alternate lens options available including Prismatic Polycarbonate and a White Frosted Polycarbonate. Inset (cold rolled steel, stainless steel and .050 alum) and Overlapping frame uses a rail hold down system.
- LED:** Available in three color temperatures 3500°K, 4000°K and 5000°K. Other color temperatures available, consult factory. 0-10V dimming available with 10-100% range and 1-100% range. Must specify dimming under options.
- FASTENERS:** Stainless steel Philips flat head screws with captive cage nuts. Finish to match housing.
- FINISH:** White antimicrobial powder coat finish following multistage iron phosphate pre-treatment.
- GASKET:** Closed cell EPDM and closed cell silicone gaskets prevent air contaminations from entering the fixture.



APPLICATION:

Cleanroom, Hospital, Hi-Tech Manufacturing, Laboratory, Food Processing Facilities, Commercial Kitchens, and more.

MOUNTING:

Surface installation.

LABEL:

Fixture is certified to UL standards. Certified IP65, ISO4, and NSF.



ORDERING INFORMATION

Ex: SCC14-HC/IE-L3352C-C-UN

PRODUCT FAMILY	NOMINAL SIZE (Dimensional Data Pg. 2)	HOUSING	FRAME Inset (I) or Overlap (O)	LUMEN OUTPUT** (Performance Data Pg. 3)	LAMP TYPE
SCC	12 = 1x2 14 = 1x4	HC = 20Ga. CRS (standard) HS = 20Ga. SS (Brushed) HP = 20Ga. SS (painted) HA = .050Ga. Alum. (painted)	IE=Extruded Alum. ✓ ◆ IP=Extruded Alum. ✓ ◆ (Painted) IP65: IC=20Ga.CRS IA= .050 Alum. (Painted) IB=20Ga.S.S. (Brushed) IS=20Ga.S.S. (Painted) OC=18Ga.CRS (Standard) OS=18Ga.S.S (Brushed) OP=18Ga.S.S. (Painted) OA= .050 Alum. (Painted)	L2 = Standard L3 = Medium	35 = 3500°K 40 = 4000°K 50 = 5000°K
CIRCUITS	LENS	VOLTAGE	OPTIONS		
1C = 1 Circuit 2C = 2 Circuits	A=.125 Prismatic Acrylic B=.125 Prismatic Poly. C=.156 Prismatic Poly. D=.187 Prismatic Poly. Φ E=.125 White Frosted Poly. G=.140 DR Acrylic	12 = 120V 27 = 277V 34 = 347V UN = Universal (120V-277V)	FZ* EL1 DM EL2 DM1 RF* SD2 TH SD3		

KEY

- FZ = Fuse*
DM = 0-10V dimming with 10-100% range
DM1 = 0-10V dimming with 1-100% range
SD2 = Step Dim. Module (50-100%)
SD3 = Step Dim. Module (25-50-100%)

- EL1 = Emerg. Bat. LED Low (1100-1250 lm)
EL2 = Emerg. Bat. LED High (2200-2500 lm)
RF = (RIF) Radio Interference Filter*
TH = Torx Head screws (with center pin)

- ✓ Not IP65
◆ Cannot be used with .187 Prismatic Poly
** Subject to change
Φ Cannot be used with IE or IP
* Cannot use with UN voltage

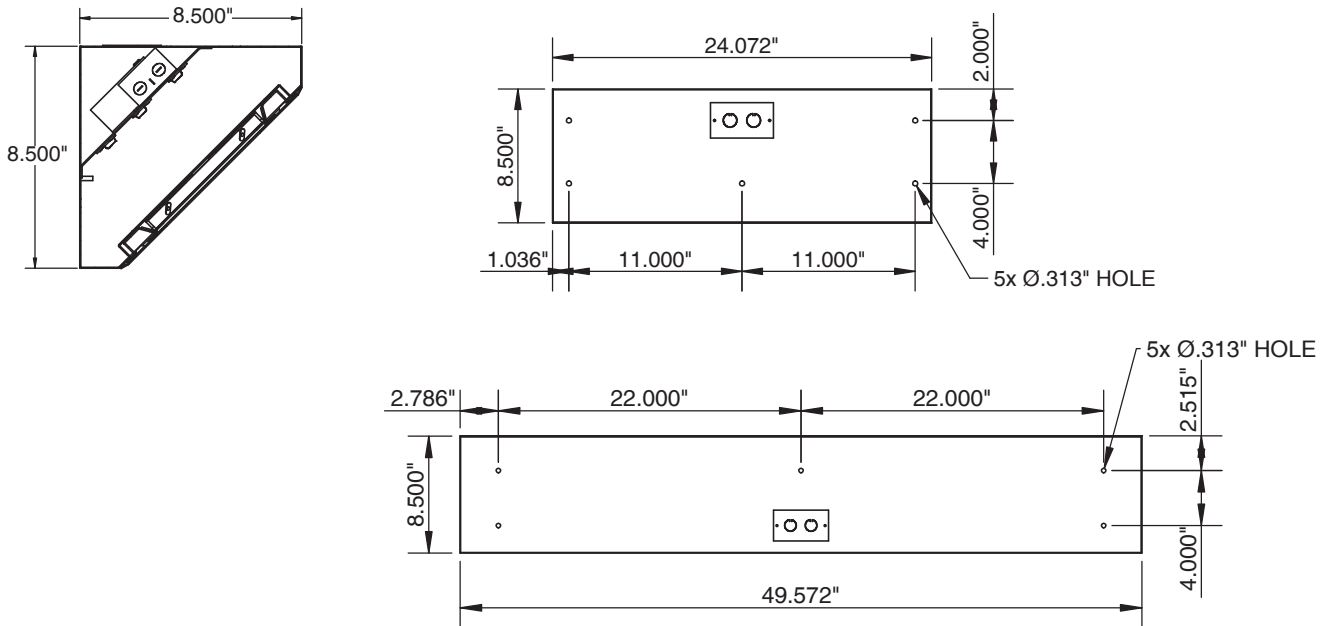
Notes:
Specifications and Dimensions are subject to change without notice.
If circuit is not specified at time of quote or order, fixture will have single circuit.

STARCLEAN CORNER 12-14 LED

SCC12/SCC14



DIMENSIONAL DATA



PERFORMANCE DATA**

MODEL	OUTPUT	LAMP TYPE	LUMENS DELIVERED	EFFICACY (lm/W)	INPUT POWER (W)
SCC12	Standard	3500°K	2875	115	25
		4000°K	3000	120	25
		5000°K	3125	125	25
	Medium	3500°K	4180	110	38
		4000°K	4370	115	38
		5000°K	4560	120	38
SCC14	Standard	3500°K	5750	115	50
		4000°K	6000	120	50
		5000°K	6250	125	50
	Medium	3500°K	8250	110	75
		4000°K	8625	115	75
		5000°K	9000	120	75

Displayed information is with a .125 Prismatic Polycarbonate. Subject to change without notice. Visit www.newstarlighting.com for additional information and IES files.

Notes:

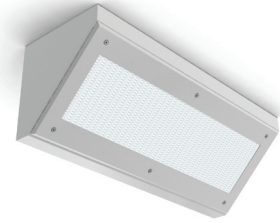
**Performance Data subject to change without notice.
 Specifications and Dimensions are subject to change without notice.
 For additional options and dimensional details please consult your New Star Lighting Representative.

STARCLEAN CORNER 12-14 FLUORESCENT

SCC12/SCC14

SPECIFICATION FEATURES

- HOUSING:** 20 gauge formed cold rolled steel housing with continuous seam welds. Aluminum and stainless steel options available.
- FRAME:** Inset and overlapping doorframe available in aluminum, cold rolled steel, and stainless steel. Extruded inset door available in anodized aluminum or white painted aluminum. Frame held to housing via aircraft cable.
- LENS:** Acrylic lens with smooth side out. Alternate lens options available including Prismatic Polycarbonate and a White Frosted Polycarbonate. Inset (cold rolled steel, stainless steel and .050 alum) and Overlapping frame uses a rail hold down system.
- ELECTRONICS:** Electronic instant start ballast <10% THD standard. Lamps by others.
- FASTENERS:** Stainless steel Philips flat head screws with captive cage nuts. Finish to match housing.
- FINISH:** White antimicrobial powder coat finish following multistage iron phosphate pre-treatment.
- GASKET:** Closed cell EPDM and closed cell silicone gaskets prevent air contaminations from entering the fixture.



APPLICATION:
Cleanroom, Hospital, Hi-Tech Manufacturing, Laboratory, Food Processing Facilities, Commercial Kitchens, and more.

MOUNTING:
Surface installation.

LABEL:
Fixture is certified to UL standards. Certified IP65, ISO4, and NSF.



ORDERING INFORMATION

Ex: SCC14-HC/IE-3281C-A-UN

PRODUCT FAMILY	NOMINAL SIZE (Dimensional Data Pg. 2)	HOUSING	FRAME Inset (I) or Overlap (O)	# OF LAMPS	LAMP TYPE
SCC	12 = 1x2 14 = 1x4	HC = 20Ga. CRS (standard) HS = 20Ga. SS (Brushed) HP = 20Ga. SS (painted) HA = .050Ga. Alum. (painted)	IE=Extruded Alum. ✓ ◆ IP=Extruded Alum. ✓ ◆ (Painted) IP65: IC=20Ga.CRS IA= .050 Alum. (Painted) IB=20Ga.S.S. (Brushed) IS=20Ga.S.S. (Painted) OC=18Ga.CRS (Standard) OS=18Ga.S.S (Brushed) OP=18Ga.S.S. (Painted) OA= .050 Alum. (Painted)	2 = 2 Lamps 3 = 3 Lamps	1x2: 14 = Lin. 14W T5 17 = Lin. 17W T8 24 = Lin. 24W T5 HO 1x4: 28 = Lin. 28W T5 32 = Lin. 32W T8 54 = Lin. 54W T5 HO
CIRCUITS	LENS	VOLTAGE	OPTIONS		
1C = 1 Circuit 2C = 2 Circuits	A=.125 Prismatic Acrylic B=.125 Prismatic Poly. C=.156 Prismatic Poly. D=.187 Prismatic Poly. Ø E=.125 White Frosted Poly. G=.140 DR Acrylic	12 = 120V 27 = 277V 34 = 347V ■ UN = Universal (120V-277V)	E1* ◀ IP66 E2* ◀ DB* RF* PR TH FZ*		

KEY

- E1 = Emerg. Battery Pack (450 Lumens)* ◀
E2 = Emerg. Battery Pack (1100 Lumens)* ◀
RF = RIF (Radio Interference Filter)*
TH = Torx Head screws (with center pin)

- IP66 = IP66 rating (only with Overlapping Frame) ✓ Not IP65
DB = Dimming Ballast*
PR = Program Rapid Start
FZ = Fuse*

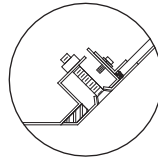
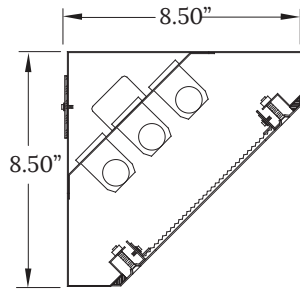
- ◆ Cannot be used with .187 Prismatic Poly
Ø Cannot be used with IE or IP
* Cannot use with UN voltage
■ Consult factory for lamp-ballast options
◀ Consult factory for T5 availability

Notes:
Specifications and Dimensions are subject to change without notice.
If circuit is not specified at time of quote or order, fixture will have single circuit.

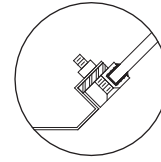
STARCLEAN CORNER 12-14 FLUORESCENT

SCC12/SCC14

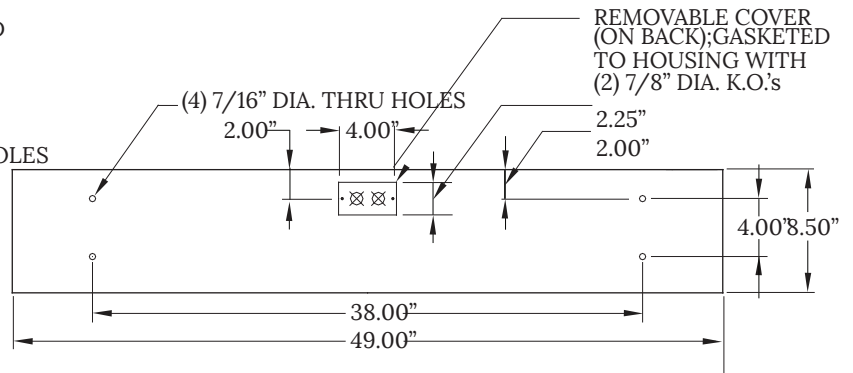
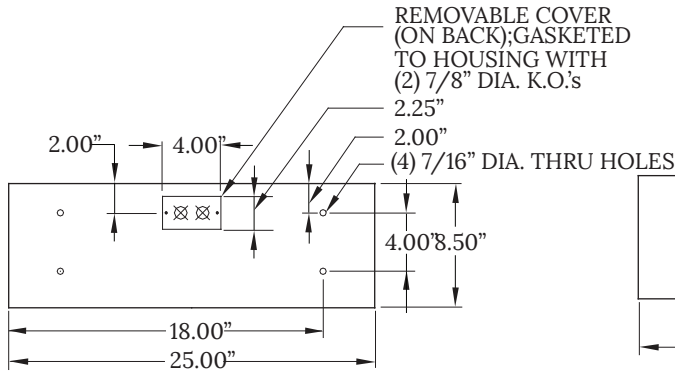
DIMENSIONAL DATA



OVERLAPPING DOOR



ALUMINUM EXTRUDED
INSET DOOR



Notes:
Specifications and Dimensions are subject to change without notice.
For additional options and dimensional details please consult your New Star Lighting Representative.