

# STARSURGICAL 22-24 LED

SSS22/SSS24/SSR22/SSR24

## SPECIFICATION FEATURES

- HOUSING:** 20 gauge formed cold rolled steel housing with continuous seam welds. Aluminum and stainless steel options available.
- FRAME:** Inset and overlapping doorframe available in aluminum, cold rolled steel, and stainless steel. Extruded inset door available in anodized aluminum or white painted aluminum. Frame held to housing via aircraft cable.
- LENS:** Acrylic lens with optional RFI and symmetric/asymmetric pattern, smooth side out. Inset (cold rolled steel, stainless steel and .050 alum) and Overlapping frame uses a rail hold down system.
- LED:** Available in three color temperatures 3500°K, 4000°K and 5000°K. Other color temperatures available, consult factory. 0-10V dimming available with 10-100% range and 1-100% range. Must specify dimming under options.
- FASTENERS:** Stainless steel Philips flat head screws with captive cage nuts. Finish to match housing.
- FINISH:** White antimicrobial powder coat finish following multistage iron phosphate pre-treatment.
- GASKET:** Closed cell EPDM and closed cell silicone gaskets prevent air contaminations from entering the fixture.



### APPLICATION:

Operating Rooms, Examination Rooms, Isolation Suites, Laboratories, and more.

### MOUNTING:

Surface (S) or Recessed (R) installation. Recessed mounting accommodates Grid and Flange installations. Recessed fixtures will be supplied with adjustable swing arms that can be used for Flange applications or taped to the side for Grid applications. Recessed install compatible with 1-1/2" and 15/16" Grid systems. Mounting for custom ceilings available, consult factory.

### LABEL:

Fixture is certified to UL standards. Certified IP65, ISO4, and NSF.



## ORDERING INFORMATION

Ex: SSR22-HC/IS-L4401C-A-UN

PRODUCT FAMILY	MOUNTING	NOMINAL SIZE (Dimensional Data Pg. 2)	HOUSING	FRAME Inset (I) or Overlap (O)	LUMEN OUTPUT** (Performance Data Pg. 3)
SS	S = Surface R = Recessed Housing (Grid/Flange installation)	22 = 2x2 24 = 2x4	HC = 20Ga. CRS (standard) HS = 20Ga. SS (Brushed) HP = 20Ga. SS (painted) HA = .050Ga. Alum. (painted)	IE=Extruded Alum. ✓ IP=Extruded Alum. ✓ (Painted) IP65: IC=20Ga.CRS IA= .050 Alum. (Painted) IB=20Ga.S.S. (Brushed) IS=20Ga.S.S. (Painted) OC=18Ga.CRS (Standard) OS=18Ga.S.S (Brushed) OP=18Ga.S.S. (Painted) OA= .050 Alum. (Painted)	L2 = Low L4 = Standard L6 = Medium L8 = High
LAMP TYPE	CIRCUITS	LENS	VOLTAGE	OPTIONS	
35 = 3500°K 40 = 4000°K 50 = 5000°K	1C = 1 Circuit 2C = 2 Circuits	A=.125 Prismatic Acrylic E=.125 White Frost. Poly. R=.125 Symmetric Pris. Acrylic with RFI Grid S=.150 Symm. Asymmetric Pris. Acrylic with RFI Grid	12 = 120V 27 = 277V 34 = 347V UN = Universal (120V-277V)	FZ* FY DM EL1 DM1 EL2 SD2 RF* SD3 TH IP66 TM+ MS 90C	

### KEY

FZ = Fuse\*

DM = 0-10V dimming with 10-100% range

DM1 = 0-10V dimming with 1-100% range

SD2 = Step Dim. Module (50-100%)

SD3 = Step Dim. Module (25-50-100%)

IP66 = IP66 rating (only with Overlapping Frame)

MS = MIL-STD-461F

Notes:

Specifications and Dimensions are subject to change without notice.

For additional options and dimensional details please consult your New Star Lighting Representative.

FY = Yoke Bracket for Recessed mount (Replaces swing arm system)

EL1 = Emerg. Bat. LED Low (1100-1250 lm)

EL2 = Emerg. Bat. LED High (2200-2500 lm)

RF = (RIF) Radio Interference Filter\*

TH = Torx Head screws (with center pin)

TM = Tandem Mount+

90C = 90 CRI

✓ Not IP65

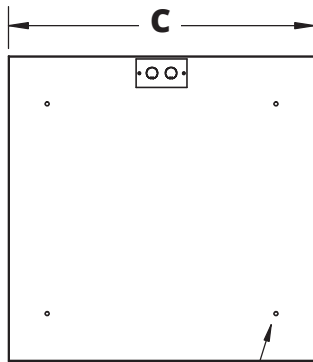
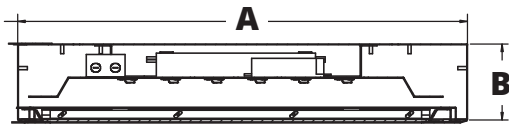
-- Subject to change

\* Cannot use with UN voltage

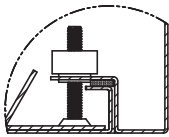
+ Requires joiner bracket. Supplied with fixture.

## DIMENSIONAL DATA

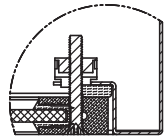
### SURFACE MOUNTING (S)



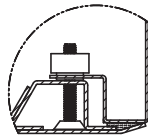
SS22: 4x Ø.31" HOLE  
SS24: 6x Ø.31" HOLE



INSET FRAME



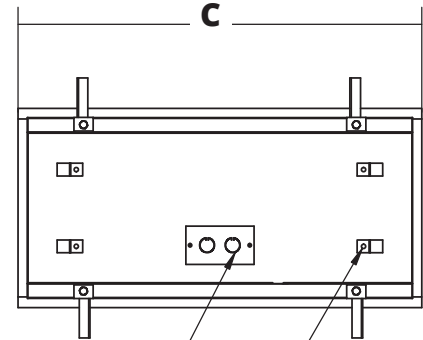
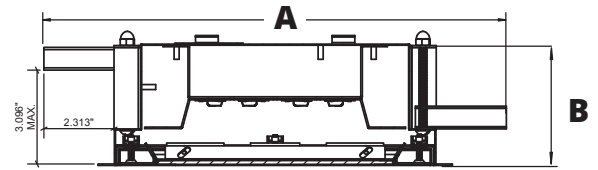
ALUMINUM EXTRUDED  
INSET FRAME



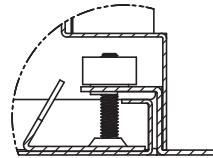
OVERLAPPING FRAME

	A	B	C
<b>SSS22</b>	24.00"	3.94"	24.07"
<b>SSS24</b>	24.00"	3.94"	48.07"
<b>SSR22</b>	23.69"	4.00"	23.69"
<b>SSR24</b>	23.69"	4.00"	47.69"

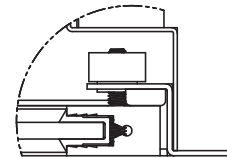
### RECESSED MOUNTING (R): GRID & FLANGE



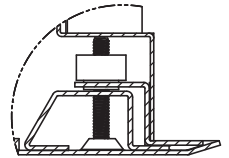
(4) Ø .250" HOLES FOR CEILING WIRE ATTACHMENT



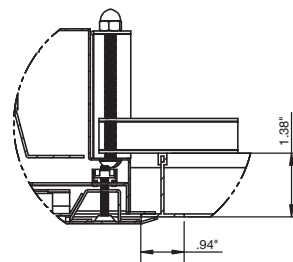
IC FRAME DETAIL



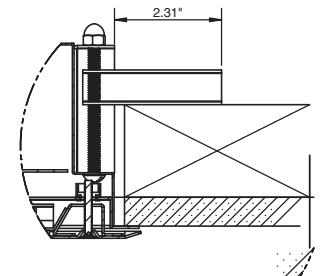
IE FRAME DETAIL



OC FRAME DETAIL



SSR (W/ OC FRAME) RECESSED GRID



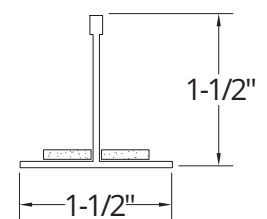
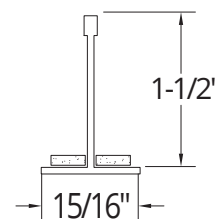
SSR (W/ OC FRAME) RECESSED FLANGE

RECOMMENDED CEILING CUT OUTS:

SSR22: 22.88" X 22.88"  
SSR24: 22.88" X 46.88"

### GRID COMPATIBILITY:

Spaced at 24" x 48" Centers



Notes:  
Specifications and Dimensions are subject to change without notice.  
For additional options and dimensional details please consult your New Star Lighting Representative.

# STARSURGICAL 22-24 LED

SSS22/SSS24/SSR22/SSR24



## PERFORMANCE DATA\*\*

MODEL	OUTPUT	LAMP TYPE	LUMENS DELIVERED	EFFICACY (lm/W)	INPUT POWER (W)
SS22	Low	3500°K	3000	120	25
		4000°K	3125	125	25
		5000°K	3250	130	25
	Standard	3500°K	6000	120	50
		4000°K	6250	125	50
		5000°K	6500	130	50
	Medium	3500°K	8625	115	75
		4000°K	9000	120	75
		5000°K	9375	125	75
	High	3500°K	11500	115	100
		4000°K	12000	120	100
		5000°K	12500	125	100
SS24	Low	3500°K	6000	120	50
		4000°K	6250	125	50
		5000°K	6500	130	50
	Standard	3500°K	12000	120	100
		4000°K	12500	125	100
		5000°K	13000	130	100
	Medium	3500°K	17250	115	150
		4000°K	18000	120	150
		5000°K	18750	125	150
	High	3500°K	23000	115	200
		4000°K	24000	120	200
		5000°K	25000	125	200

Displayed information is with a .125 Prismatic Polycarbonate. Subject to change without notice. Visit [www.newstarlighting.com](http://www.newstarlighting.com) for additional information and IES files.

Notes:

\*\*Performance Data subject to change without notice.  
 Specifications and Dimensions are subject to change without notice.  
 For additional options and dimensional details please consult your New Star Lighting Representative.

# STARSURGICAL 22-24 FLUORESCENT

SSS22/SSS24/SSG22/SSG24/SSF22/SSF24

## SPECIFICATION FEATURES

- HOUSING:** 20 gauge formed cold rolled steel housing with continuous seam welds. Aluminum and stainless steel options available.
- FRAME:** Inset and overlapping doorframe available in aluminum, cold rolled steel, and stainless steel. Extruded inset door available in anodized aluminum or white painted aluminum. Frame held to housing via aircraft cable.
- LENS:** Acrylic lens with optional RFI and symmetric/asymmetric pattern, smooth side out. Inset (cold rolled steel, stainless steel and .050 alum) and Overlapping frame uses a rail hold down system.
- ELECTRONICS:** Electronic instant start ballast <10% THD standard. Lamps by others.
- FASTENERS:** Stainless steel Philips flat head screws with captive cage nuts. Finish to match housing.
- FINISH:** White antimicrobial powder coat finish following multistage iron phosphate pre-treatment.
- GASKET:** Closed cell EPDM and closed cell silicone gaskets prevent air contaminations from entering the fixture.



### APPLICATION:

Surgical Suites, Operating Rooms, Examination Rooms, Isolation Suites, Laboratories, and more.

### MOUNTING:

Surface, Grid or Flange mounting. Flange fixtures come with adjustable 90° swing arm for easy installation. Optional Yoke Bracket would replace swing arm. Grid fixtures compatible with 1-1/2" and 15/16" Grid systems. Mounting for custom ceilings available, consult factory.

### LABEL:

Fixture is certified to UL standards. Certified IP65, ISO4, and NSF.



## ORDERING INFORMATION

Ex: SSG24-HS/IC-3322C-A-UN

PRODUCT FAMILY	MOUNTING	NOMINAL SIZE (Dimensional Data Pg. 2)	HOUSING	FRAME Inset (I) or Overlap (O)	# OF LAMPS
SS	S = Surface G = Grid F = Flange	22 = 2x2 24 = 2x4	HC = 20Ga. CRS (standard) HS = 20Ga. SS (Brushed) HP = 20Ga. SS (painted) HA = .050Ga. Alum. (painted)	IE=Extruded Alum. ✓ IP=Extruded Alum. ✓ (Painted) IP65: IC=20Ga.CRS IA= .050 Alum. (Painted) IB=20Ga.S.S. (Brushed) IS=20Ga.S.S. (Painted) OC=18Ga.CRS (Standard) OS=18Ga.S.S (Brushed) OP=18Ga.S.S. (Painted) OA= .050 Alum. (Painted)	2 = 2 Lamps 3 = 3 Lamps 4 = 4 Lamps 6 = 6 Lamps
LAMP TYPE	CIRCUITS	LENS	VOLTAGE	OPTIONS	
2x2: 14 = Lin. 14W T5 17 = Lin. 17W T8 24 = Lin. 24W T5 HO	1C = 1 Circuit 2C = 2 Circuits	A=.125 Prismatic Acrylic E=.125 White Frost. Poly. R=.125 Symmetric Pris. Acrylic with RFI Grid S=.150 Symm. Asymmetric Pris. Acrylic with RFI Grid	12 = 120V 27 = 277V 34 = 347V ■ UN = Universal (120V-277V)	E1* ◀ IP66 E2* ◀ TM+ RF* DB* TH PR FY FZ* MS	
2x4: 28 = Lin. 28W T5 32 = Lin. 32W T8 54 = Lin. 54W T5 HO					

## KEY

- E1 = Emerg. Battery Pack (450 Lumens)\* ◀  
E2 = Emerg. Battery Pack (1100 Lumens)\* ◀  
RF = RIF (Radio Interference Filter)\*  
TH = Torx Head screws (with center pin)  
FY = Yoke Bracket for Flange mount  
(Replace swing arm system)

- IP66 = IP66 rating (only with Overlapping Frame) ✓  
TM = Tandem Mount+  
DB = Dimming Ballast\*  
PR = Program Rapid Start  
FZ = Fuse\*  
MS = MIL-STD-461F

- ✓ Not IP65  
\* Cannot use with UN voltage  
+ Requires joiner bracket. Supplied with fixture.  
■ Consult factory for lamp-ballast options  
◀ Consult factory for T5 availability

Notes:  
Specifications and Dimensions are subject to change without notice.  
If circuit is not specified at time of quote or order, fixture will have single circuit.

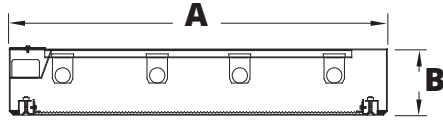
# STARSURGICAL 22-24 FLUORESCENT

SSS22/SSS24/SSG22/SSG24/SSF22/SSF24

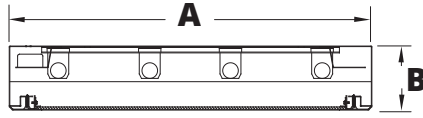


## DIMENSIONAL DATA

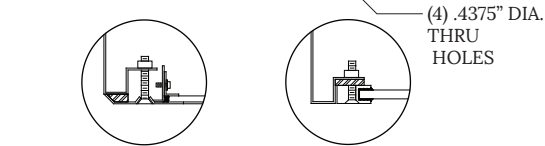
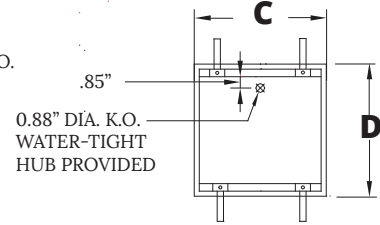
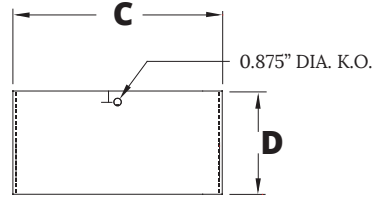
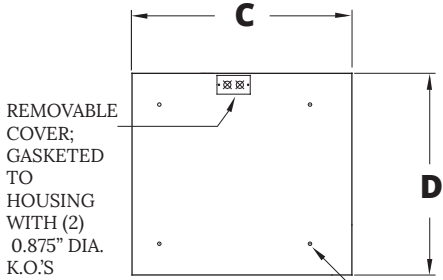
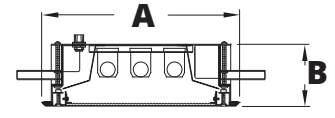
### SURFACE MOUNTING



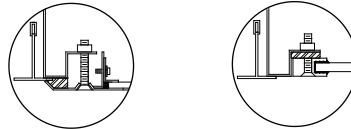
### GRID MOUNTING



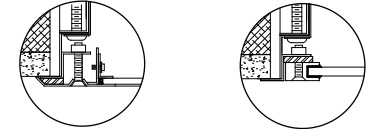
### FLANGE MOUNTING



OVERLAPPING FRAME ALUMINUM EXTRUDED INSET FRAME



OVERLAPPING FRAME ALUMINUM EXTRUDED INSET FRAME

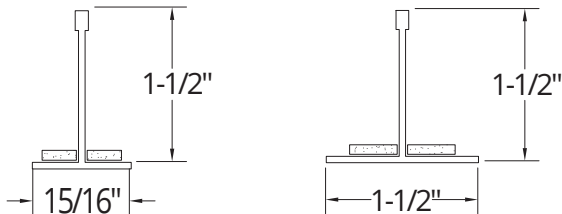


OVERLAPPING DOOR ALUMINUM EXTRUDED INSET DOOR

	A	B	C	D	Recommended Ceiling Cut-Out
SSS22	24"	3.94"	24.07"	24"	N/A
SSS24	24"	3.94"	48.07"	24"	N/A
SSG22	23.69"	3.94"	24.07"	23.69"	N/A
SSG24	23.69"	3.94"	48.07"	23.69"	N/A
SSF22	25.13"	3.94"	25.25"	25.13"	24.375" x 24.375"
SSF24	25.13"	3.94"	49.13"	25.13"	48.375" x 24.375"

### (SSG) GRID COMPATIBILITY:

Spaced at 24" x 48" Centers



Notes:  
Specifications and Dimensions are subject to change without notice.  
For additional options and dimensional details please consult your New Star Lighting Representative.