

# STAR SURGICAL 12-14 GRID

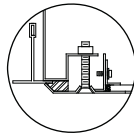
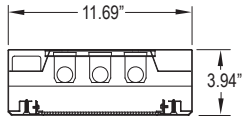
## HEALTHCARE SERIES

SURGICAL GRID LUMINAIRE  
FLUORESCENT/LED

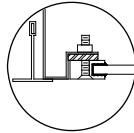
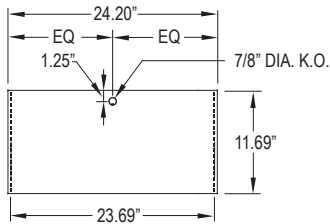


PROJECT:
TYPE:
PRODUCT:
APPROVED:
DATE:

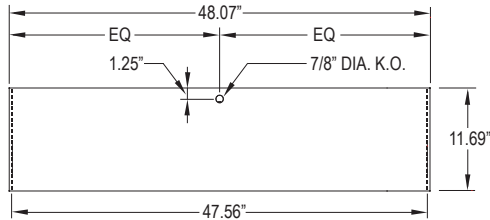
### DIMENSIONAL DATA



OVERLAPPING FRAME



ALUMINUM EXTRUDED  
INSET FRAME



### FEATURES

The New Star "Surgical G12-G14" Healthcare fixture is designed for use in surgical suites and medical settings which employ laminar or turbulent cleanroom airflow and areas where clean is critical.

- Enclosed design to insure ingress protection
- Standard overlapping frame made from single sheet CRS with beveled edges
- Inset frame fabricated from extruded aluminum
- Sealed, reinforced mitered corners
- Gasketed for contamination control
- Asymmetrical light distribution available
- Lens options for different high tech medical needs
- Smooth surface for minimal maintenance
- Accommodates extreme cleaning protocols
- IP65 rated with overlap frame and inset CRS, stainless steel and aluminum painted

### APPLICATION

- Cleanroom
- Laboratory
- Hospital
- Food Processing Facilities
- Hi- Technology Manufacturing

### SPECIFICATION FEATURES

#### HOUSING:

20 gauge formed cold rolled steel housing with continuous seam welds. Aluminum and stainless steel option available. Manufactured in accordance with NSF standards.

#### FRAME:

Inset extruded door available in anodized aluminum or white painted aluminum. Overlapping door frame available in aluminum, CRS and stainless steel. Frame fastened to housing via aircraft cable.

#### LENS:

Acrylic lens with optional RFI and symmetric/asymmetric pattern, smooth side out. Overlapping frame uses a rail hold down system.

#### ELECTRONICS:

Fluorescent:  
Electronic Ballast <10% THD standard. RIF available. Lamps by others.

#### LED:

Available in three standard color temperatures 3500°K, 4000°K & 5000°K. Other color temperatures available, consult factory.

#### LED NIGHT LIGHT:

Integrated switch allows light selection at 100%, 70%, 40% and 10% levels

#### GASKET:

Closed cell pvc or extruded silicone gaskets prevent air contaminants from entering room.

#### FASTENERS:

Phillips flat head screws with captive cage nuts

#### FINISH:

White Antimicrobial powdercoat finish following iron phosphate pre-treatment.

#### LABEL:



IP65

ISO 4

### ORDERING INFORMATION

Product Family	Housing Matl.	Frame	# of Lamps	Lamp Type
<b>SSG</b> -				
<b>SSG12</b> 11-11/16" x 24-3/16" x 3-15/16"	HC = 20Ga. CRS (Standard)	Overlap Frame Options IP65: OC=18Ga. CRS(Stand.) OS=18Ga. S.S (Brush.) OP=18Ga. S.S.(Paint.) OA=Aluminum (Paint.)	Fluorescent: SSG12-SCF14 2 = 2 Lamp 3 = 3 Lamp	Fluorescent: SSG12 17 = Lin. 17W T8 14 = Lin. 14W T5 24 = Lin. 24W T5 HO SSG14 32 = Lin. 32W T8 28 = Lin. 28W T5 54 = Lin. 54W T5 HO
<b>SSG14</b> 11-11/16" x 48-1/16" x 3-15/16"	HS = 20Ga. S.S. HP = 20Ga. S.S (Painted) HA = Alum. (Painted)	Inset Frame Options: IE=Extruded Alum.No IP65 IP=Extruded Alum.(Paint.) No IP65 IC=20Ga. CRS IP65 IA=Alum.(Paint.) IP65 IB=20Ga. S.S.(Brush.) IP65 IS=20Ga. S.S.(Paint.) IP65	LED SSG12: L2 = LED 2 Rw (25W) L3 = LED 3 Rw (37.5W)  LED SSG14: L2 = LED 2 Rw (50W) L3 = LED 3 Rw (75W)	LED: 35 = White 3500° K 40 = White 4000° K 50 = White 5000° K

# of Ballasts/Drivers	Lens	Voltage	Options
1 = 1 Ballast 2 = 2 Ballast LED: 1 = Driver 2 = Driver	A = .125 Prismatic Acrylic B = .125 Prismatic Polycarbonate C = .156 Prismatic Polycarbonate D = .187 Prismatic Polycarbonate LC3 = .125 White Frosted Polycarbonate	12 = 120V 27 = 277V 34 = 347V ■ UN = Universal (120V-277V)	DB = Dimming Ballast (0-10V) ♦ DM = Dimming Driver (0-10V) SDM = Step Dimming Module PR = Program Rapid Start FZ = Fuse * TM = Tandem Mount NL = Fluorescent Night Light * LN = LED Night Light. Consult factory for available color/temperatures.  E1 = Emerg. Bat. Pack(450 Lumens) * ◀◀ E2 = Emerg. Bat. Pack (1100 Lumens) * ◀◀ EL1= Emerg. Bat. LED Low EL2= Emerg. Bat. LED High RF = RIF (Radio Interference Filter)* TH = Torx Head screws (with center pin) MS = MIL-STD-461F: SSG14 32W T8 Lamp only, (1) RIF per ballast, lens w/RIF grid, 120V only, Advance rapid start ballast, and overlap door

\* Cannot use with universal voltage option  
◀ Consult factory for T5 availability

■ Consult factory for lamp-ballast options  
♦ Not available in LED

#### Notes:

Specifications and Dimensions are subject to change without notice. For additional options and dimensional details please consult your New Star Lighting Representative. For specific electronic ballast, specify brand and catalog number.