

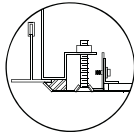
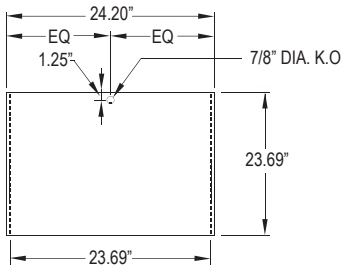
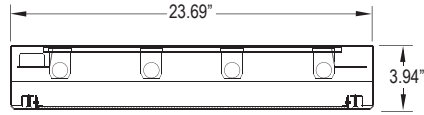
STAR SURGICAL 22-24 GRID

HEALTHCARE SERIES

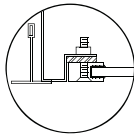
SURGICAL GRID LUMINAIRE
FLUORESCENT/LED



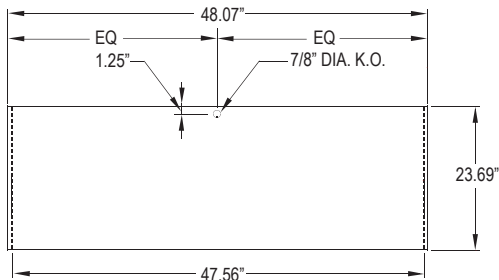
DIMENSIONAL DATA



OVERLAPPING FRAME



ALUMINUM EXTRUDED
INSET FRAME



ORDERING INFORMATION

Product Family	Housing Matl.	Frame	# of Lamps	Lamp Type
SSG				
SSG22 24-3/16" x 23-1/16" x 3-15/16"	HC = 20Ga. CRS (Standard)	Overlap Frame Options IP65:	Fluorescent: SSG22-SSG24: SYMMETRICAL: 2 = 2 Lamp 4 = 4 Lamp 3 = 3 Lamp 6 = 6 Lamp	SSG22: 17=Lin. 17W T8 14=Lin. 14W T5 24=Lin. 24W T5 HO
SSG24 24-3/16" x 48-1/16" x 3-15/16"	HS = 20Ga. S.S. HP = 20Ga. S.S (Painted) HA = Alum.(Painted) .050	Inset Frame Options: IE=Extruded Alum.No IP65 OC=18Ga. CRS(Stand.) OS=18Ga. S.S (Brush.) No IP65 OP=18Ga. S.S.(Paint.) OA=Aluminum (Paint.)	LED SSG22: L2 = LED 2 Rw (25W) L3 = LED 3 Rw (37.5W) L4 = LED 4 Rw (50W) L5 = LED 5 Rw (62.5W) L6 = LED 6 Rw (75W) L7 = LED 7 Rw (87.5W) L8 = LED 8 Rw (100.0W)	SSG24: 32 = Linear 32W T8 28 = Linear 28W T5 54 = Linear 54W T5 HO U6=32W U-Lamp (6" leg spac.)
		IC=20Ga. CRS IP65 IA=Alum.(Paint.) IP65 IB=20Ga. S.S.(Brush.) IP65 IS=20Ga. S.S.(Paint.) IP65	ASYNMETRICAL: 3A = 3 Lamp 4A = 4 Lamp 6A = 6 Lamp L3 = 3 RW.LED L4 = 4 RW.LED L6 = 6 RW.LED	LED: 30 =White 3000° K 84 CRI 35 =White 3500° K 84 CRI 40 =White 4000° K 84 CRI 50 =White 5000° K 84 CRI

# Ballasts/Driver	Lens	Voltage	Options
Fluorescent: 1 = Ballast 2 = Ballast	LED: 1 = Driver 2 = Driver 3 = Driver 4 = Driver	12 = 120V 27 = 277V 34 = 347V UN = Universal (120V-277V)	DB = Dimming Ballast (0-10V) * DM1% = Dimming 1% SD2 = Step Dim. Module(50-100%)▲ SD3 = Step Dim. Module(25-50-100%)▲ SD3A=Step Dim. Module(33-66-100%)▲ PR = Program Rapid Start NL = Fluorescent Night Light * LN = LED Night Light. Consult factory for available color/temperatures. FZ = Fuse *
* Cannot use with universal voltage option ▲ Consult factory for T5 availability ■ Consult factory for lamp-ballast options	A = .125 Prismatic Acrylic S = .150 Symmetric Asymmetric with RFI Grid Prismatic Acrylic R = .125 Symmetric Prismatic Acrylic with RFI Grid LC3 = .125 White Frosted Polycarbonate	▲ Not available in 277V ● 2 lamp only ◆ Not available in LED	E1 = Emerg. Bat. Pack (450 Lumens) * ◆◆ E2 = Emerg. Bat. Pack (1100 Lumens) * ◆◆ EL1= Emerg. Bat. LED Low EL2= Emerg. Bat. LED High TH = Torx Head screws (with center pin) TM = Tandem Mount RF = RIF (Radio Interference Filter)* TH = Torx Head screws (with center pin) MS = ML-STD-461F

PROJECT: _____

TYPE: _____

PRODUCT: _____

APPROVED: _____

DATE: _____

FEATURES

The New Star "Surgical G22-G24" Healthcare fixture is designed for use in medical settings, labs, high-tech production facilities, food processing and areas where clean is critical.

- 5 yr. warranty as listed under our NewStar promise
- Grid housing utilizing enclosed design with seam welds to insure ingress protection
- Standard overlapping frame construction from a single sheet with beveled edges
- Inset frame fabrication from extruded aluminum with sealed, reinforced edges
- Smooth surfaces for easy cleaning
- Dimming Driver (0-10V) standard
- Dimming 1% available
- Specialized gasketing to provide contamination control
- Asymmetrical light distribution available
- IP65 rated with overlap frame and inset CRS, stainless steel and aluminum painted

APPLICATION

- Operating Rooms
- Isolation Suites

- Patient Examination Rooms
- Laboratory

SPECIFICATION FEATURES

HOUSING:

20 gauge formed cold rolled steel housing with continuous seam welds. Aluminum and stainless steel option available. Manufactured in accordance with NSF standards.

FRAME:

Inset extruded door available in anodized aluminum or white painted aluminum. Overlapping door frame available in aluminum, CRS and stainless steel. Frame fastened to housing via aircraft cable.

LENS:

Acrylic lens with optional RFI and symmetric/asymmetric pattern, smooth side out. Overlapping frame uses a rail hold down system.

ELECTRONICS:

Fluorescent:
Electronic Ballast <10% THD standard. RIF available. Lamps by others.

LED:

Available in three standard color temperatures 3500°K, 4000°K & 5000°K. Other color temperatures available, consult factory.

LED NIGHT LIGHT:

Integrated switch allows light selection at 100%, 70%, 40% and 10% levels

GASKET:

Closed cell pvc or extruded silicone gaskets prevent air contaminants from entering room.

FASTENERS:

Phillips flat head screws with captive cage nuts

FINISH:

White Antimicrobial powdercoat finish following iron phosphate pre-treatment.

LABEL:



Notes:
Specifications and Dimensions are subject to change without notice. For additional options and dimensional details please consult your New Star Lighting Representative. For specific electronic ballast, specify brand and catalog number.



# LED BOARDS	# ROWS	WATTAGE	EFFICACY (lm/W)	DELIVERED LUMENS
SSF22-SSG22-SSS22				
SCF22-SCG22-SCS22:				
L2	2 Rw	(25.0W)	110	2,750 LMS
L3	3 Rw	(37.5W)	110	4,125 LMS
L4	4 Rw	(50.0W)	110	5,500 LMS
L5	5 Rw	(62.5W)	110	6,875 LMS
L6	6 Rw	(75.0W)	110	8,250 LMS
L7	7 Rw	(87.5W)	110	9,625 LMS
L8	8 Rw	(100W)	110	11,000 LMS
SSF24-SSG24-SSS24				
SCF24-SCG24-SCS24:				
L2	2 Rw	(50.0W)	110	5,500 LMS
L3	3 Rw	(75.0W)	110	8,250 LMS
L4	4 Rw	(100W)	110	11,000 LMS
L5	5 Rw	(125W)	110	13,750 LMS
L6	6 Rw	(150W)	110	16,500 LMS
L7	7 Rw	(175W)	110	19,625 LMS
L8	8 Rw	(200W)	110	22,000 LMS
* TAKE AN ADDITIONAL 20% OFF DELIVERED LUMENS WHEN SPECIFYING THE LC3 LENS				