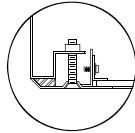
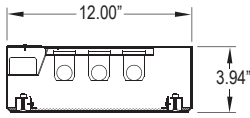


# STAR SURGICAL 12-14 SURFACE

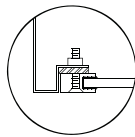
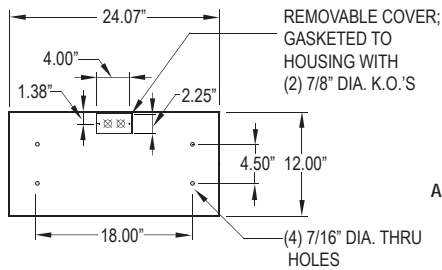
HEALTHCARE SERIES  
SURGICAL SURFACE LUMINAIRE  
FLUORESCENT/LED



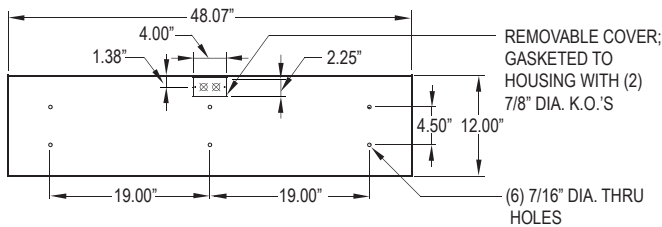
## DIMENSIONAL DATA



OVERLAPPING FRAME



ALUMINUM EXTRUDED INSET FRAME



## ORDERING INFORMATION

Product Family	Housing Matl	Frame	# of Lamps	Lamp Type
<b>SSS_</b>				
<b>SSS12</b> 12" x 24-1/16" x 3-15/16"	HC = 20Ga. CRS (Standard)	Overlap Frame Options IP65: OC=18Ga. CRS(Stand.) OS=18Ga. S.S (Brush.) OP=18Ga. S.S.(Paint.) OA=Aluminum (Paint.)	Fluorescent: SSS12-SSS14 2 = 2 Lamp 3 = 3 Lamp	SSG12: 17 = Lin.17W T8 14 = Lin.14W T5 24 = Lin.24W T5 HO U6 = 32W U-Lamp • LED: (6" leg spacing) 35 = White 3500° K 40 = White 4000° K 50 = White 5000° K
<b>SSS14</b> 14" x 48-1/16" x 3-15/16"	HS = 20Ga. S.S. HP = 20Ga. S.S (Painted) HA = Alum. (Painted)	Inset Frame Options: IE=Extruded Alum.No IP65 IP=Extruded Alum.(Paint.) No IP65 IC=20Ga. CRS IP65 IA=Alum.(Paint.) IP65 IB=20Ga. S.S.(Brush.) IP65 IS=20Ga. S.S.(Paint.) IP65	LED SSS12: L2 = LED 2 Rw (25W) L3 = LED 3 Rw (37.5W) L4 = LED 4 Rw (50W) LED SSS14: L2 = LED 2 Rw (50W) L3 = LED 3 Rw (75W) L4 = LED 4 Rw (100W) L5 = LED 5 Rw (125W) L6 = LED 6 Rw (150W)	SSG14: 32 = Lin.32W T8 28 = Lin.28W T5 54 = Lin.54W T5 HO 35 = White 3500° K 40 = White 4000° K 50 = White 5000° K

# Ballasts/Driver	Lens	Voltage	Options
Fluorescent: 1 = Ballast 2 = Ballast	LED: 1 = Driver 2 = Driver 3 = Driver 4 = Driver	12 = 120V 27 = 277V 34 = 347V ■ UN = Universal (120V-277V)	DB = Dimming Ballast (0-10V) ♦ DM = Dimming Driver (0-10V) SDM = Step Dimming Module PR = Program Rapid Start FZ = Fuse * TM = Tandem Mount NL = Fluorescent Night Light * LN = LED Night Light. Consult factory for available color/temperatures.
	A = .125 Prismatic Acrylic S = .150 Symmetric Asymmetric with RFI Grid Prismatic Acrylic (2 or 3 Lamps only) R = .125 Symmetric Prismatic Acrylic with RFI Grid LC3 = .125 White Frosted Polycarbonate		E1 = Emerg. Bat. Pack(450 Lumens) * ♦♦ E2 = Emerg. Bat. Pack (1100 Lumens) * ♦♦ EL1= Emerg. Bat. LED Low EL2= Emerg. Bat. LED High RF = RIF (Radio Interference Filter)* TH = Torx Head screws (with center pin) MS = MIL-STD-461F: SSG14 32W T8 Lamp only, (1) RIF per ballast, lens w/RFI grid, 120V only, Advance rapid start ballast, and overlap door

\* Cannot use with universal voltage option    ■ Consult factory for lamp-ballast options    ♦ Not available in LED  
◀ Consult factory for T5 availability    ● 2 lamp only

PROJECT:
TYPE:
PRODUCT:
APPROVED:
DATE:

## FEATURES

The New Star "Surgical S12-S14" Healthcare fixture is designed for use in surgical suites, medical settings which employ laminar or turbulent cleanroom airflow and areas where clean is critical.

- Enclosed design to insure ingress protection
- Standard overlapping frame made from single sheet CRS with beveled edges
- Inset frame fabricated from extruded aluminum
- Sealed, reinforced mitered corners
- Gasketed for contamination control
- Lens options for different high tech medical needs
- Smooth surface for minimal maintenance
- Accommodates extreme cleaning protocols
- IP65 rated with overlap frame and inset CRS, stainless steel and aluminum painted

## APPLICATION

- Operating Rooms
- Isolation Suites
- Patient Examination Rooms
- Laboratory

## SPECIFICATION FEATURES

### HOUSING:

20 gauge formed cold rolled steel housing with continuous seam welds. Aluminum and stainless steel option available. Manufactured in accordance with NSF standards.

### FRAME:

Inset extruded door available in anodized aluminum or white painted aluminum. Overlapping door frame available in aluminum, CRS and stainless steel. Frame fastened to housing via aircraft cable.

### LENS:

Acrylic lens with optional RFI and symmetric/asymmetric pattern, smooth side out. Overlapping frame uses a rail hold down system.

### ELECTRONICS:

Fluorescent:  
Electronic Ballast <10% THD standard. RIF available. Lamps by others.

### LED:

Available in three standard color temperatures 3500°K, 4000°K & 5000°K. Other color temperatures available, consult factory.

### LED NIGHT LIGHT:

Integrated switch allows light selection at 100%, 70%, 40% and 10% levels

### GASKET:

Closed cell pvc or extruded silicone gaskets prevent air contaminants from entering room.

### FASTENERS:

Phillips flat head screws with captive cage nuts

### FINISH:

White Antimicrobial powdercoat finish following iron phosphate pre-treatment.

### LABEL:



## Notes:

Specifications and Dimensions are subject to change without notice. For additional options and dimensional details please consult your New Star Lighting Representative. For specific electronic ballast, specify brand and catalog number.