

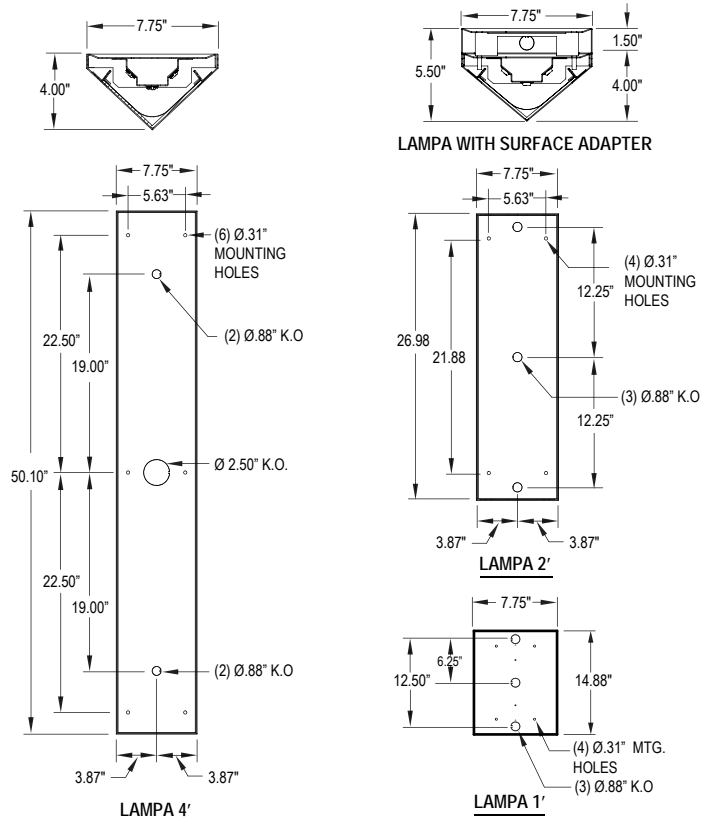
LAMPA

ARCHITECTURAL SERIES
WALL MOUNT
FLUORESCENT / LED



PROJECT:
TYPE:
PRODUCT:
APPROVED:
DATE:

DIMENSIONAL DATA



FEATURES

The New Star "LAMPA" is an architectural decorative and durable fixture that offers an innovative solution for upscale smart illumination.

- Suitable for MRI room application (Aluminum Face)
- Wall mount architectural fixture.
- Durable sconce with innovative style.
- Aluminum body with polycarbonate lens.
- ADA Compliant.

APPLICATIONS

- Hotels
- Retail
- Condos
- Stairways

SPECIFICATION FEATURES

HOUSING:

Die formed, seam welded and ground smooth marine grade aluminum.

FRAME :

Die formed, seam welded and ground smooth (stainless steel option available).

LENS :

1/8" thick white frosted polycarbonate diffuser.

ELECTRONICS:

Fluorescent:
Electronic Ballast <10% THD standard.

LED:

Available in three standard color temperatures 3500°K, 4000°K & 5000°K. Other color temperatures available, consult factory.

REFLECTOR:

Die formed aluminum, removable and utilized with all electrical components for easy installation and maintenance.

GASKET:

Black neoprene gasket around interior door frame to prevent water and dust infiltration.

FASTENERS:

Tamper resistant countersink, flat head Torx screws with center pin reject.

FINISH:

Black PPG polyester textured paint (consult factory for custom color).

LABEL: 



ORDERING INFORMATION

Product Family	Face Frame	# Lamps	Lamp Type	# Ballast/Driver	Lens	
LAM_						
LAMPA 1 7-3/4" x 4" x 15"	AL = Aluminium (Standard) SS = Stainless Steel (Brushed) SSP = Stainless Steel (Painted) CR = Cold Rolled CF = Custom Frame	LAMPA 2-4 Fluorescent: 1 = 1 Lamp LAMPA 1 LED: L2=LED 2 Rw(12.5W) 693lms(55lpw) L3=LED 3 Rw(18.75W) 1,031lms(55lpw)	LAMPA 2 LED: L1=LED 1Rw(12.5W) 693 lms (55 lpw) L2=LED 2 Rw(25W) 1,375 lms (55lpw) L3=LED 3 Rw(37.5W) 2,062 lms (55lpw)	LAMPA 4 LED: L1= LED 1 Rw(25W) 1,375 lms (55lpw) L2= LED 2 Rw(50W) 2,750 lms(55lpw) L3= LED 3 Rw(75W) 4,125lms(55lpw)	Fluorescent LAMPA 1-2-4 LED: LAMPA 2: 30 = White 3000° K 14 = Lin.14W T5 35 = White 3500° K 17 = Lin.17W T8 40 = White 4000° K 24 = Lin.24W T5 50 = White 5000° K (H.O.) Fluorescent Other color temperatures LAMPA 4: available, please consult 28 = Lin. 28W T5 factory 32 = Lin. 32W T8 54 = Lin.54W T5 (H.O.)	Fluorescent: 1 = Ballast LED : 1 = Driver LC3 = .125 White Fros. Polycarbonate

Voltage

- 12 = 120V
- 27 = 277V
- 34 = 347V
- UN = Universal (120V-277)

Finish

- BK = Black PPG Polyester Textured Paint
- CC = Custom Color (Specify RAL number)

Options

- PC = Photocell (with surface adapter only)
- SA = Surface Adapter (not ADA compliant)
- E1 = Emergency Battery * (with surface adapter only)
- E2 = Emergency Battery (high) * (with surface adapter only)
- EM1 = Emergency Battery LED *▲ (with surface adapter only)
- FZ = Fuse Holder *
- DM = Dimming LED Driver (0-10V) (with 3 rows only or surface adapter)
- PR = Program Rapid Start Ballast
- OC = Occupancy Sensor (with 2 row LED only)▲
- AH = Allen head screws with center pin reject
- CUS = Custom band option (Consult factory)
- PM = Pendant Mount
- TM = Tandem Mount
- MRI = MRI Room Application (Aluminum frame only)

- * Cannot use with universal voltage option
- Occupancy sensor not available with lamping
- ▲ Cannot use "EML" & "OC" together for Lampa 1 only

3-10-16

Notes:
Specifications and Dimensions are subject to change without notice. For additional options and dimensional details please consult your New Star Lighting Representative. For specific electronic ballast, specify brand and catalog number.

