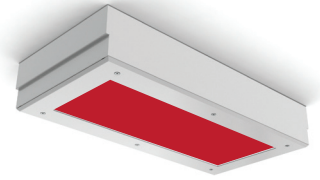


VIVARIUM STARCLEAN 12-14 LED

SCS12/SCS14/SCR12/SCR14

SPECIFICATION FEATURES

- HOUSING:** 20 gauge formed cold rolled steel housing with continuous seam welds. Aluminum and stainless steel options available.
- FRAME:** Inset and overlapping doorframe available in aluminum, cold rolled steel, and stainless steel. Inset extruded door available in anodized aluminum or white painted aluminum. Frame held to housing via aircraft cable.
- LENS:** Acrylic lens with smooth side out. Alternate lens options available including Prismatic Polycarbonate and a White Frosted Polycarbonate. Inset (cold rolled steel, stainless steel and .050 alum) and Overlapping frame uses a rail hold down system.
- LED:** Available with Red LED's only or Red and White LED's. Red LED's will be installed every other row, unless otherwise specified. White color temperatures available in 3500°K, 4000°K and 5000°K. 0-10V dimming available with 10-100% range and 1-100% range. Must specify dimming under options.
- FASTENERS:** Stainless steel Philips flat head screws with captive cage nuts. Finish to match housing.
- FINISH:** White antimicrobial powder coat finish following multistage iron phosphate pre-treatment.
- GASKET:** Closed cell EPDM and closed cell silicone gaskets prevent air contaminations from entering the fixture.



APPLICATION:

Cleanroom, Laboratory, Vivarium settings, and more.

MOUNTING:

Surface (S) or Recessed (R) installation. Recessed mounting accommodates Grid and Flange installations. Recessed fixtures will be supplied with adjustable swing arms that can be used for Flange applications or taped to the side for Grid applications. Recessed install compatible with 1-1/2" and 15/16" Grid systems. Mounting for custom ceilings available, consult factory.

LABEL:

Fixture is certified to UL standards. Certified IP65, ISO4, and NSF.



ORDERING INFORMATION

Ex: SCR12-HC/IC-R1W1352-A-UN

PRODUCT FAMILY	MOUNTING	NOMINAL SIZE (Dimensional Data Pg. 2)	HOUSING	FRAME Inset (I) or Overlap (O)	RED/WHITE LED
SC					
	S = Surface R = Recessed Housing (Grid/Flange installation)	12 = 1x2 14 = 1x4	HC = 20Ga. CRS (standard) HS = 20Ga. SS (painted) HP = 20Ga. SS (painted) HA = .050Ga. Alum. (painted)	IE=Extruded Alum. ✓ ◆ IP=Extruded Alum. ✓ ◆ (Painted) IP65: IC=20Ga.CRS IA= .050 Alum. (Painted) IB=20Ga.S.S. (Brushed) IS=20Ga.S.S. (Painted) OC=18Ga.CRS (Standard) OS=18Ga.S.S (Brushed) OP=18Ga.S.S. (Painted) OA= .050 Alum. (Painted)	R1W2 = 1 Red/2 White R2W1 = 2 Red/1 White RD2 = 2 Red LED's RD3 = 3 Red LED's
WHITE LED LAMP TYPE	CIRCUITS	LENS	VOLTAGE	OPTIONS	
0 = No White LED's 35 = 3500°K 40 = 4000°K 50 = 5000°K	1C = 1 Circuit 2C = 2 Circuits	A = .125 Prismatic Acrylic B = .125 Prismatic Poly. C = .156 Prismatic Poly. D = .187 Prismatic Poly. Φ E = .125 White Frosted Poly. G = .140 DR Acrylic	12 = 120V 27 = 277V 34 = 347V UN = Universal (120V-277V)	FZ* FY DM EL1 DM1 EL2 SD2 RF* SD3 TH TM+	

KEY

FZ = Fuse*
DM = 0-10V dimming with 10-100% range
DM1 = 0-10V dimming with 1-100% range
SD2 = Step Dim. Module (50-100%)
SD3 = Step Dim. Module (25-50-100%)

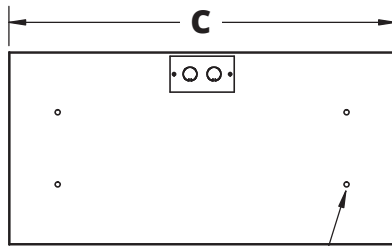
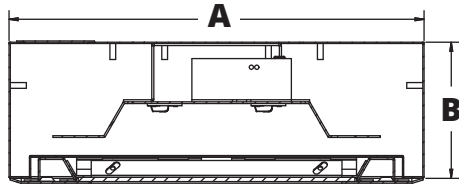
Notes:
Specifications and Dimensions are subject to change without notice.
For additional options and dimensional details please consult your New Star Lighting Representative.

FY = Yoke Bracket for Recessed mount (Replaces swing arm system)
EL1 = Emerg. Bat. LED Low (10W)
EL2 = Emerg. Bat. LED High (20W)
RF = (RIF) Radio Interference Filter*
TH = Torx Head screws (with center pin)
TM = Tandem Mount+

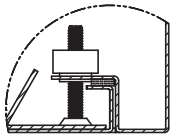
✓ Not IP65
◆ Cannot be used with .187 Prismatic Poly
.. Subject to change
Φ Cannot be used with IE or IP
* Cannot use with UN voltage
+ Requires U-Channel bracket for Flange install. Consult factory.

DIMENSIONAL DATA

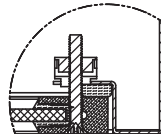
SURFACE MOUNTING (S)



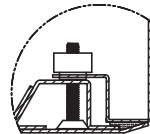
SCS12: (4) Ø.31" HOLE
SCS14: (6) Ø.31" HOLE



INSET FRAME

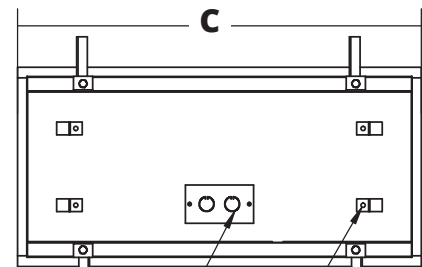
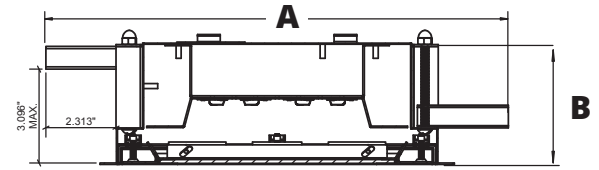


ALUMINUM EXTRUDED
INSET FRAME

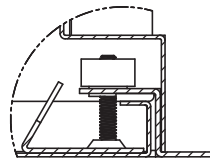


OVERLAPPING FRAME

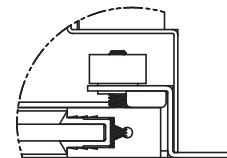
RECESSED MOUNTING (R): GRID & FLANGE



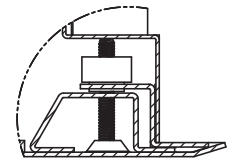
.875" KO
(4) Ø .250 "
HOLES FOR CEILING WIRE ATTACHMENT



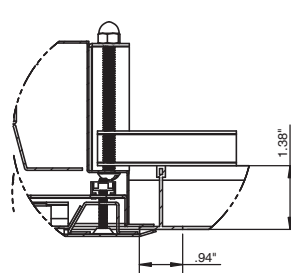
IC FRAME DETAIL



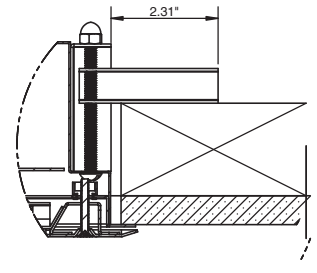
IE FRAME DETAIL



OC FRAME DETAIL



SCR (W/ OC FRAME) RECESSED GRID



SCR (W/ OC FRAME) RECESSED FLANGE

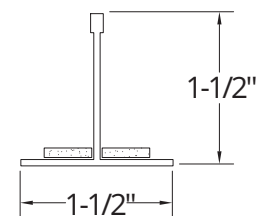
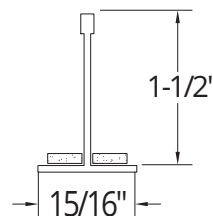
RECOMMENDED CEILING CUT OUTS:

SCR12: 10.88" X 22.88"
SCR14: 10.88" X 46.88"

	A	B	C
SCS12	12.00"	3.94"	24.07"
SCS14	12.00"	3.94"	48.07"
SCR12	11.69"	4.00"	23.69"
SCR14	11.69"	4.00"	47.69"

GRID COMPATIBILITY:

Spaced at 24" x 48" Centers



VIVARIUM STARCLEAN 12-14 LED

SCS12/SCS14/SCR12/SCR14



PERFORMANCE DATA

RED LEDs	OUTPUT	LUMENS DELIVERED	EFFICACY (lm/W)	INPUT POWER (W)
SC12	RD2	700	36	20
	RD3	1050	36	30
SC14	RD2	1400	36	40
	RD3	2100	36	60

RED/WHITE LEDs	OUTPUT	WHITE LED				RED LED		
		LAMP TYPE	LUMENS DELIVERED	EFFICACY (lm/W)	INPUT POWER (W)	LUMENS DELIVERED	EFFICACY (lm/W)	INPUT POWER (W)
SC12	R1/W2	3500°K	2875	115	25	350	35	10
		4000°K	3000	120	25	350	35	10
		5000°K	3125	125	25	350	35	10
	R2/W1	3500°K	1438	115	12.5	700	36	20
		4000°K	1500	120	12.5	700	36	20
		5000°K	1563	125	12.5	700	36	20
SC14	R1/W2	3500°K	5750	115	50	700	36	20
		4000°K	6000	120	50	700	36	20
		5000°K	6250	125	50	700	36	20
	R2/W1	3500°K	2875	115	25	1400	36	40
		4000°K	3000	120	25	1400	36	40
		5000°K	3125	125	25	1400	36	40

Notes:
 Specifications and Dimensions are subject to change without notice.
 For additional options and dimensional details please consult your New Star Lighting Representative.