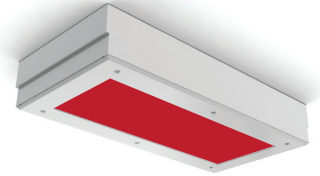


VIVARIUM STARCLEAN 12-14 LED

SCS12/SCS14/SCR12/SCR14

SPECIFICATION FEATURES

- HOUSING:** 20 gauge formed cold rolled steel housing with continuous seam welds. Aluminum and stainless steel option available.
- FRAME:** Inset extruded door available in anodized aluminum or white painted aluminum. Overlapping door frame available in aluminum, CRS, and stainless steel. Frame fastened to housing via aircraft cable.
- LENS:** Acrylic lens with smooth side out. Alternate lens options available including Prismatic Polycarbonate and a White Frosted Polycarbonate. Overlapping frame uses a rail hold down system.
- LED:** Optional Red LED boards for full color vivarium settings or a mix of White and Red LED boards available. White color temperatures available in 3500°K, 4000°K and 5000°K. Other color temperatures available, consult factory. Standard 0-10V dimming with 10-100% range.
- FASTENERS:** Philips flat head screws with captive cage nuts.
- FINISH:** White antimicrobial powder coat finish following iron phosphate pre-treatment.
- GASKET:** Closed cell EPDM or extruded silicone gaskets prevent air contaminations from entering the fixture



- APPLICATION:** Cleanroom, Laboratory, Vivarium settings, and more.
- MOUNTING:** Flange fixtures come with adjustable 90° swing arm for easy installation. Optional Yoke Bracket would replace swing arm.
- LABEL:** Fixture is certified to UL standards for Damp Location. Certified IP65, ISO4, and NSF.



ORDERING INFORMATION

Ex: SCG14-HA/IP-L4RWA2-C-UN-EL1

PRODUCT FAMILY	MOUNTING	NOMINAL SIZE <small>*Dimensional Data Pg. 2</small>	HOUSING	FRAME Inset (I) or Overlap (O)	# OF LAMPS <small>*For White LED's only</small>
SC	S = Surface R = Universal (Grid/Flange)	12 = 1x2 14 = 1x4	HC= 20Ga. CRS (standard) HS= 20Ga. SS (painted) HP= 20Ga. SS (painted) HA= .050Ga. Alum. (painted)	IE = Extruded Alum. ✓ ◆ IP = Extruded Alum. ✓ ◆ (Painted) IP65: IC = 20Ga.CRS IA = .050 Alum. (Painted) IB = 20Ga.S.S. (Brushed) IS = 20Ga.S.S. (Painted) OC = 18Ga.CRS (Standard) OS = 18Ga.S.S (Brushed) OP = 18Ga.S.S. (Painted) OA = .050 Alum. (Painted)	12: L2 = LED 2 Row (25W) L3 = LED 3 Row (37.5W) L4 = LED 4 Row (50W) 14: L2 = LED 2 Row (50W) L3 = LED 3 Row (75W) L4 = LED 4 Row (100W)
LAMP TYPE	CIRCUITS	LENS	VOLTAGE	OPTIONS	
RD = All Red LED's RWX = Red with White LED's (X = Configuration. See pg. 2)	1 = 1 Circuit 2 = 2 Circuits	A = .125 Prismatic Acrylic B = .125 Prismatic Poly. C = .156 Prismatic Poly. Φ D = .187 Prismatic Poly.	12 = 120V 27 = 277V 34 = 347V UN = Universal (120V-277V)	FZ* TH DM EL1 FY EL2 SD2▲ RF* SD3▲ TM+ SD3A▲	

KEY

- FZ = Fuse*
D1 = Dimming driver 1-100%
FY = Yoke Bracket for Flange mount (Replace swing arm system)
- SD2 = Step Dim. Module (50-100%)▲
SD3 = Step Dim. Module (25-50-100%) ▲
SD3A = Step Dim. Module (33-66-100%)▲
TH = Torx Head screws (with center pin)
- EL1 = Emerg. Bat. LED Low
EL2 = Emerg. Bat. LED High
RF = (RIF) Radio Interference Filter*
TM = Tandem Mount +
- ✓ Not IP65
◆ Must use .156 Pris. Poly Lens
Φ Must be used with IE or IP
* Cannot use with UN voltage + Not available with Grid
▲ Not available in 277V

Notes:
Image is a 1x4 Grid fixture
Specifications and Dimensions are subject to change without notice.
For additional options and dimensional details please consult your New Star Lighting Representative.

CONFIGURATION OPTIONS

*Additional configurations available, consult factory.



A
L2

(One Red Row,
One White Row)



B
L3

(2 White Rows Outer,
1 Red Row Center)



C
L3

(2 Red Rows Outer,
1 White Row Center)



D
L3

(2 White Rows,
1 Red Row)



E
L3

(2 Red Rows,
1 White Rows)



F
L4

(Every Other Row)



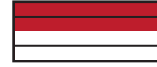
G
L4

(2 White Rows Outer,
2 Red Rows Center)



H
L4

(2 Red Rows Outer,
2 White Rows Center)



I
L4

(2 Red Rows,
2 White Rows)

DIMENSIONAL DATA

Notes:
Specifications and Dimensions are subject to change without notice.
For additional options and dimensional details please consult your New Star Lighting Representative.