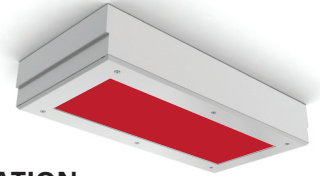


# VIVARIUM STARCLEAN 12-14 LED

SCS12/SCS14/SCR12/SCR14

## SPECIFICATION FEATURES

- HOUSING:** 20 gauge formed cold rolled steel housing with continuous seam welds. Aluminum and stainless steel options available.
- FRAME:** Inset and overlapping doorframe available in aluminum, cold rolled steel, and stainless steel. Inset extruded door available in anodized aluminum or white painted aluminum. Frame held to housing via aircraft cable.
- LENS:** Acrylic lens with smooth side out. Alternate lens options available including Prismatic Polycarbonate and a White Frosted Polycarbonate. Inset (cold rolled steel, stainless steel and .050 alum) and Overlapping frame uses a rail hold down system.
- LED:** Available with Red LED's only or Red and White LED's. Red LED's will be installed every other row, unless otherwise specified. White color temperatures available in 3500°K, 4000°K and 5000°K. 0-10V dimming available with 10-100% range and 1-100% range. Must specify dimming under options.
- FASTENERS:** Philips flat head screws with captive cage nuts. Finish to match housing.
- FINISH:** White antimicrobial powder coat finish following iron phosphate pre-treatment.
- GASKET:** Closed cell EPDM and closed cell silicone gaskets prevent air contaminations from entering the fixture.



### APPLICATION:

Cleanroom, Laboratory, Vivarium settings, and more.

### MOUNTING:

Surface (S) or Recessed (R) installation. Recessed mounting accommodates Grid and Flange installations. Recessed fixtures will be supplied with adjustable swing arms that can be used for Flange applications or taped to the side for Grid applications.

### LABEL:

Fixture is certified to UL standards for Damp Location. Certified IP65, ISO4, and NSF.



## ORDERING INFORMATION

Ex: SCR12-HC/IC-R1W1352-A-UN

PRODUCT FAMILY	MOUNTING	NOMINAL SIZE (Dimensional Data Pg. 2)	HOUSING	FRAME Inset (I) or Overlap (O)	RED/WHITE LED
SC					
	S = Surface R = Recessed Housing (Grid/Flange installation)	12 = 1x2 14 = 1x4	HC = 20Ga. CRS (standard) HS = 20Ga. SS HP = 20Ga. SS (painted) HA = .050Ga. Alum. (painted)	IE=Extruded Alum. ✓ ◆ IP=Extruded Alum. ✓ ◆ (Painted) IP65: IC=20Ga.CRS IA= .050 Alum. (Painted) IB=20Ga.S.S. (Brushed) IS=20Ga.S.S. (Painted) OC=18Ga.CRS (Standard) OS=18Ga.S.S (Brushed) OP=18Ga.S.S. (Painted) OA= .050 Alum. (Painted)	R1W1 = 1 Red/1 White R1W2 = 1 Red/2 White R2W1 = 2 Red/1 White RD2 = 2 Red LED's RD3 = 3 Red LED's
WHITE LED LAMP TYPE	CIRCUITS	LENS	VOLTAGE	OPTIONS	
0 = No White LED's 35 = 3500°K 40 = 4000°K 50 = 5000°K	1 = 1 Circuit 2 = 2 Circuits	A = .125 Prismatic Acrylic B = .125 Prismatic Poly. C = .156 Prismatic Poly. D = .187 Prismatic Poly. Φ E = .125 White Frosted Poly.	12 = 120V 27 = 277V 34 = 347V UN = Universal (120V-277V)	FZ* FY DM EL1 DM1 EL2 SD2 RF* SD3 TH TM+	

### KEY

FZ = Fuse\*

DM = 0-10V dimming with 10-100% range

DM1 = 0-10V dimming with 1-100% range

SD2 = Step Dim. Module (50-100%)

SD3 = Step Dim. Module (25-50-100%)

FY = Yoke Bracket for Recessed mount (Replaces swing arm system)

Notes:

Image is a 1x4 Grid fixture

Specifications and Dimensions are subject to change without notice.

For additional options and dimensional details please consult your New Star Lighting Representative.

EL1 = Emerg. Bat. LED Low (10W)

EL2 = Emerg. Bat. LED High (20W)

RF = (RIF) Radio Interference Filter\*

TH = Torx Head screws (with center pin)

TM = Tandem Mount+

✓ Not IP65

◆ Cannot be used with .187 Prismatic Poly

.. Subject to change

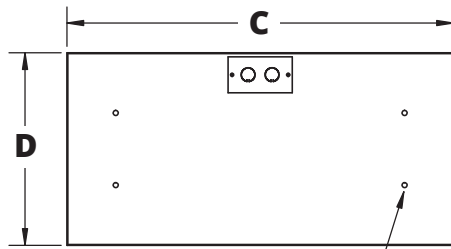
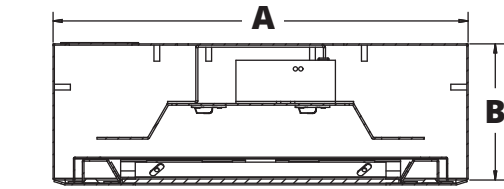
Φ Cannot be used with IE or IP

\* Cannot use with UN voltage

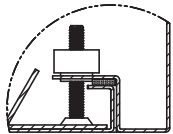
+ Requires U-Channel bracket for Flange install. Consult factory.

## DIMENSIONAL DATA

### SURFACE MOUNTING (S)



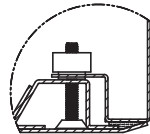
SCS12: (4) Ø.31" HOLE  
SCS14: (6) Ø.31" HOLE



INSET FRAME

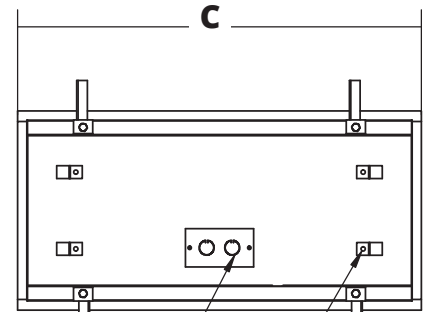
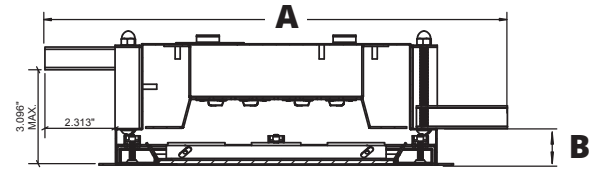


ALUMINUM EXTRUDED  
INSET FRAME

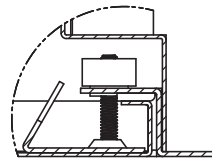


OVERLAPPING FRAME

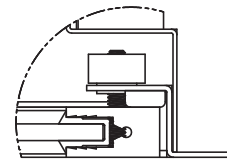
### RECESSED MOUNTING (R): GRID & FLANGE



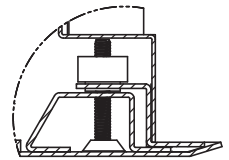
.875" KO  
(4) Ø .250"  
HOLES FOR CEILING WIRE ATTACHMENT



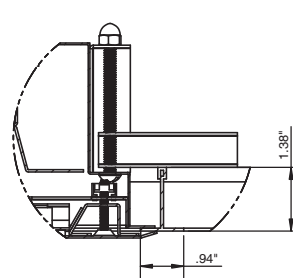
IC FRAME DETAIL



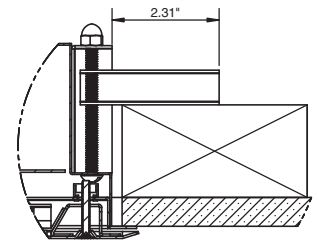
IE FRAME DETAIL



OC FRAME DETAIL



SCR (W/ OC FRAME) RECESSED GRID



SCR (W/ OC FRAME) RECESSED FLANGE

	A	B	C
<b>SCS12</b>	12.00"	3.94"	24.07"
<b>SCS14</b>	12.00"	3.94"	48.07"
<b>SCR12</b>	11.69"	4.00"	23.69"
<b>SCR14</b>	11.69"	4.00"	47.69"

RECOMMENDED CEILING CUT OUTS:  
SCR12: 10.88" X 22.88"  
SCR14: 10.88" X 46.88"