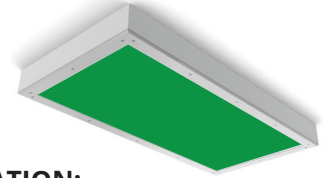


STARSURGICAL GREEN 22-24 LED

SSS22/SSS24/SSR22/SSR24

SPECIFICATION FEATURES

- HOUSING:** 20 gauge formed cold rolled steel housing with continuous seam welds. Aluminum and stainless steel options available.
- FRAME:** Inset and overlapping doorframe available in aluminum, cold rolled steel, and stainless steel. Inset extruded door available in anodized aluminum or white painted aluminum. Frame held to housing via aircraft cable.
- LENS:** Acrylic lens with optional RFI and symmetric/asymmetric pattern, smooth side out. Inset (cold rolled steel, stainless steel and .050 alum) and Overlapping frame uses a rail hold down system.
- LED:** Available with Green LED's only or Green and White LED's. Green LED's will be installed every other row, unless otherwise specified. White color temperatures available in 3500°K, 4000°K and 5000°K. 0-10V dimming available with 10-100% range and 1-100% range. Must specify dimming under options.
- FASTENERS:** Stainless steel Philips flat head screws with captive cage nuts. Finish to match housing.
- FINISH:** White antimicrobial powder coat finish following multistage iron phosphate pre-treatment.
- GASKET:** Closed cell EPDM and closed cell silicone gaskets prevent air contaminations from entering the fixture.



APPLICATION:

Surgical Suites, Operating Rooms, Examination Rooms, Isolation Suites, Laboratories, and more.

MOUNTING:

Surface (S) or Recessed (R) installation. Recessed mounting accommodates Grid and Flange installations. Recessed fixtures will be supplied with adjustable swing arms that can be used for Flange applications or taped to the side for Grid applications. Recessed install compatible with 1-1/2" and 15/16" Grid systems. Mounting for custom ceilings available, consult factory.

LABEL:

Fixture is certified to UL standards. Certified IP65, ISO4, and NSF.



ORDERING INFORMATION

Ex: SSR24-HC/IE-GN61C-A-UN

PRODUCT FAMILY	MOUNTING	NOMINAL SIZE (Dimensional Data Pg. 2)	HOUSING	FRAME Inset (I) or Overlap (O)	GREEN/WHITE LED <small>*Additional Configurations available, consult factory.</small>
SS	S = Surface R = Recessed Housing (Grid/Flange installation)	22 = 2x2 24 = 2x4	HC = 20Ga. CRS (standard) HS = 20Ga. SS (painted) HP = 20Ga. SS (painted) HA = .050Ga. Alum. (painted)	IE=Extruded Alum. ✓ ◆ IP=Extruded Alum. ✓ ◆ (Painted) IP65: IC=20Ga.CRS IA= .050 Alum. (Painted) IB=20Ga.S.S. (Brushed) IS=20Ga.S.S. (Painted) OC=18Ga.CRS (Standard) OS=18Ga.S.S (Brushed) OP=18Ga.S.S. (Painted) OA= .050 Alum. (Painted)	G2W2 = 2 Green/2 White G2W4 = 2 Green/4 White G2W6 = 2 Green/6 Green G4W2 = 4 Green/2 White G6W2 = 6 Green/2 White GN2 = 2 Green LED's GN4 = 4 Green LED's GN6 = 6 Green LED's
WHITE LED LAMP TYPE	CIRCUITS	LENS	VOLTAGE	OPTIONS	
Blank = No White LED's 35 = 3500°K 40 = 4000°K 50 = 5000°K	1C = 1 Circuit 2C = 2 Circuits	A=.125 Prismatic Acrylic E=.125 White Frost. Poly. R=.125 Symmetric Pris. Acrylic with RFI Grid S=.150 Symm. Asymmetric Pris. Acrylic with RFI Grid	12 = 120V 27 = 277V 34 = 347V UN = Universal (120V-277V)	FZ* FY DM EL1 DM1 EL2 SD2 RF* SD3 TH IP66 TM+ MS	

KEY

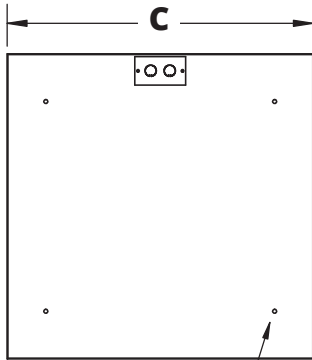
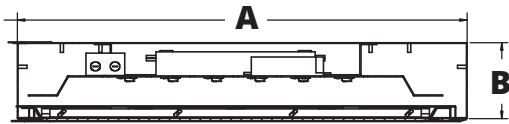
- FZ = Fuse*
DM = 0-10V dimming with 10-100% range
DM1 = 0-10V dimming with 1-100% range
SD2 = Step Dim. Module (50-100%)
SD3 = Step Dim. Module (25-50-100%)
IP66 = IP66 rating (only with Overlapping Frame)
MS = MIL-STD-461F
Notes:
Specifications and Dimensions are subject to change without notice.
For additional options and dimensional details please consult your New Star Lighting Representative.

- FY = Yoke Bracket for Recessed mount (Replaces swing arm system)
EL1 = Emerg. Bat. LED Low (10W)
EL2 = Emerg. Bat. LED High (20W)
RF = (RFI) Radio Interference Filter*
TH = Torx Head screws (with center pin)
TM = Tandem Mount+

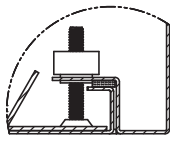
- ✓ Not IP65
◆ Cannot be used with .187 Prismatic Poly
.. Subject to change
Φ Cannot be used with IE or IP
* Cannot use with UN voltage
+ Requires U-Channel bracket for Flange install. Consult factory.

DIMENSIONAL DATA

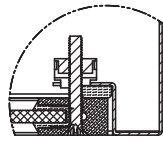
SURFACE MOUNTING (S)



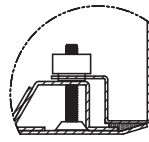
SS22: 4x Ø.31" HOLE
SS24: 6x Ø.31" HOLE



INSET FRAME



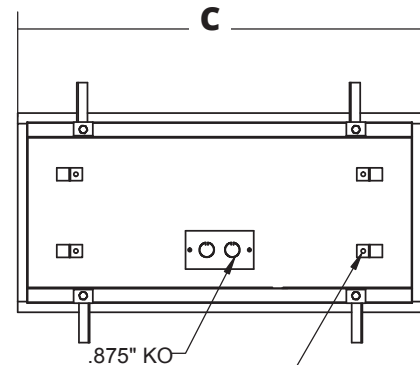
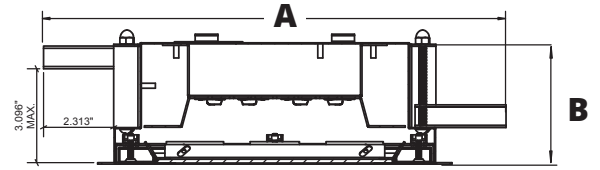
ALUMINUM EXTRUDED
INSET FRAME



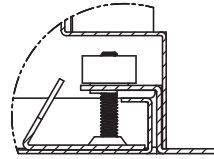
OVERLAPPING FRAME

	A	B	C
SSS22	24.00"	3.94"	24.07"
SSS24	24.00"	3.94"	48.07"
SSR22	23.69"	4.00"	23.69"
SSR24	23.69"	4.00"	47.69"

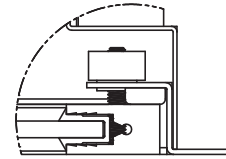
RECESSED MOUNTING (R): GRID & FLANGE



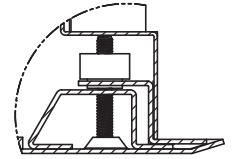
(4) Ø .250"
HOLES FOR CEILING WIRE ATTACHMENT



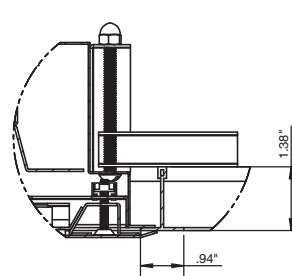
IC FRAME DETAIL



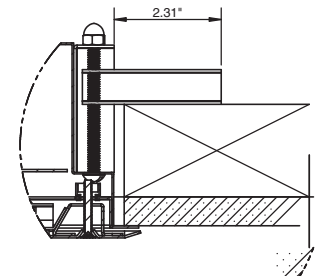
IE FRAME DETAIL



OC FRAME DETAIL



SSR (W/ OC FRAME) RECESSED GRID



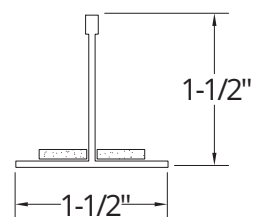
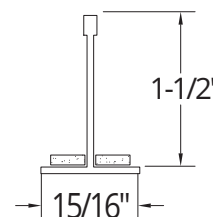
SSR (W/ OC FRAME) RECESSED FLANGE

RECOMMENDED CEILING CUT OUTS:

SSR22: 22.88" X 22.88"
SSR24: 22.88" X 46.88"

GRID COMPATIBILITY:

Spaced at 24" x 48" Centers



Notes:
Specifications and Dimensions are subject to change without notice.
For additional options and dimensional details please consult your New Star Lighting Representative.

STARSURGICAL GREEN 22-24 LED

SSS22/SSS24/SSR22/SSR24



PERFORMANCE DATA

GREEN LEDS	OUTPUT	LUMENS DELIVERED	EFFICACY (lm/W)	INPUT POWER (W)
SS22	GN2	1375	49	28
	GN4	2750	49	56
	GN6	4100	49	84
SS24	GN2	3250	59	55
	GN4	6450	59	110
	GN6	9800	59	165

GREEN/WHITE LEDS	OUTPUT	WHITE LED				GREEN LED		
		LAMP TYPE	LUMENS DELIVERED	EFFICACY (lm/W)	INPUT POWER (W)	LUMENS DELIVERED	EFFICACY (lm/W)	INPUT POWER (W)
SS22	G2/W2	3500°K	3000	120	25	1375	49	28
		4000°K	3125	125	25	1375	49	28
		5000°K	3250	130	25	1375	49	28
	G2/W4	3500°K	6000	120	50	1375	49	28
		4000°K	6250	125	50	1375	49	28
		5000°K	6500	130	50	1375	49	28
	G2/W6	3500°K	8625	115	75	1375	49	28
		4000°K	9000	120	75	1375	49	28
		5000°K	9375	125	75	1375	49	28
	G4/W2	3500°K	3000	120	25	2750	49	56
		4000°K	3125	125	25	2750	49	56
		5000°K	3250	130	25	2750	49	56
	G6/W2	3500°K	3000	120	25	4100	49	84
		4000°K	3125	125	25	4100	49	84
		5000°K	3250	130	25	4100	49	84
SS24	G2/W2	3500°K	6000	120	50	3250	59	55
		4000°K	6250	125	50	3250	59	55
		5000°K	6500	130	50	3250	59	55
	G2/W4	3500°K	12000	120	100	3250	59	55
		4000°K	12500	125	100	3250	59	55
		5000°K	13000	130	100	3250	59	55
	G2/W6	3500°K	17250	115	150	3250	59	55
		4000°K	18000	120	150	3250	59	55
		5000°K	18750	125	150	3250	59	55
	G4/W2	3500°K	6000	120	50	6450	59	110
		4000°K	6250	125	50	6450	59	110
		5000°K	6500	130	50	6450	59	110
	G6/W2	3500°K	6000	120	50	9800	59	165
		4000°K	6250	125	50	9800	59	165
		5000°K	6500	130	50	9800	59	165

Notes:
 Specifications and Dimensions are subject to change without notice.
 For additional options and dimensional details please consult your New Star Lighting Representative.