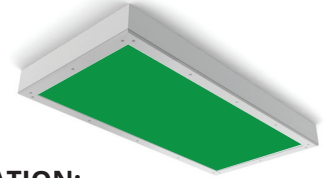


STARSURGICAL GREEN 22-24 LED

SCS22/SCS24/SCR22/SCR24

SPECIFICATION FEATURES

- HOUSING:** 20 gauge formed cold rolled steel housing with continuous seam welds. Aluminum and stainless steel options available.
- FRAME:** Inset and overlapping doorframe available in aluminum, cold rolled steel, and stainless steel. Inset extruded door available in anodized aluminum or white painted aluminum. Frame held to housing via aircraft cable.
- LENS:** Acrylic lens with optional RFI and symmetric/asymmetric pattern, smooth side out. Inset (cold rolled steel, stainless steel and .050 alum) and Overlapping frame uses a rail hold down system.
- LED:** Available with Green LED's only or Green and White LED's. Green LED's will be installed every other row, unless otherwise specified. White color temperatures available in 3500°K, 4000°K and 5000°K. 0-10V dimming available with 10-100% range and 1-100% range. Must specify dimming under options.
- FASTENERS:** Stainless steel Philips flat head screws with captive cage nuts. Finish to match housing.
- FINISH:** White antimicrobial powder coat finish following multistage iron phosphate pre-treatment.
- GASKET:** Closed cell EPDM and closed cell silicone gaskets prevent air contaminations from entering the fixture.



APPLICATION:

Surgical Suites, Operating Rooms, Examination Rooms, Isolation Suites, Laboratories, and more.

MOUNTING:

Surface (S) or Recessed (R) installation. Recessed mounting accommodates Grid and Flange installations. Recessed fixtures will be supplied with adjustable swing arms that can be used for Flange applications or taped to the side for Grid applications. Recessed install compatible with 1-1/2" and 15/16" Grid systems. Mounting for custom ceilings available, consult factory.

LABEL:

Fixture is certified to UL standards. Certified IP65, ISO4, and NSF.



ORDERING INFORMATION

Ex: SSR24-HC/IE-GN61C-A-UN

PRODUCT FAMILY	MOUNTING	NOMINAL SIZE (Dimensional Data Pg. 2)	HOUSING	FRAME Inset (I) or Overlap (O)	GREEN/WHITE LED <small>*Additional Configurations available, consult factory.</small>
SS	S = Surface R = Recessed Housing (Grid/Flange installation)	22 = 2x2 24 = 2x4	HC = 20Ga. CRS (standard) HS = 20Ga. SS (painted) HP = 20Ga. SS (painted) HA = .050Ga. Alum. (painted)	IE=Extruded Alum. ✓ ◆ IP=Extruded Alum. ✓ ◆ (Painted) IP65: IC=20Ga.CRS IA= .050 Alum. (Painted) IB=20Ga.S.S. (Brushed) IS=20Ga.S.S. (Painted) OC=18Ga.CRS (Standard) OS=18Ga.S.S (Brushed) OP=18Ga.S.S. (Painted) OA= .050 Alum. (Painted)	GIW1 = 1 Green/1 White GIW3 = 1 Green/3 White G2W2 = 2 Green/2 White G3W1 = 3 Green/1 White G2W4 = 2 Green/4 White G3W3 = 3 Green/3 White G4W2 = 4 Green/2 White GN2 = 2 Red LED's GN4 = 4 Red LED's GN6 = 6 Red LED's
WHITE LED LAMP TYPE	CIRCUITS	LENS	VOLTAGE	OPTIONS	
Blank = No White LED's 35 = 3500°K 40 = 4000°K 50 = 5000°K	1C = 1 Circuit 2C = 2 Circuits	A=.125 Prismatic Acrylic E=.125 White Frost. Poly. R=.125 Symmetric Pris. Acrylic with RFI Grid S=.150 Symm. Asymmetric Pris. Acrylic with RFI Grid	12 = 120V 27 = 277V 34 = 347V UN = Universal (120V-277V)	FZ* FY DM EL1 DM1 EL2 SD2 RF* SD3 TH IP66 TM+ MS	

KEY

FZ = Fuse*
DM = 0-10V dimming with 10-100% range
DM1 = 0-10V dimming with 1-100% range
SD2 = Step Dim. Module (50-100%)
SD3 = Step Dim. Module (25-50-100%)
IP66 = IP66 rating (only with Overlapping Frame)
MS = MIL-STD-461F

Notes:
Specifications and Dimensions are subject to change without notice.
For additional options and dimensional details please consult your New Star Lighting Representative.

2225 W Pershing Rd. Chicago, IL 60609

FY = Yoke Bracket for Recessed mount (Replaces swing arm system)
EL1 = Emerg. Bat. LED Low (10W)
EL2 = Emerg. Bat. LED High (20W)
RF = (RFI) Radio Interference Filter*
TH = Torx Head screws (with center pin)
TM = Tandem Mount+

◆ Cannot be used with .187 Prismatic Poly
.. Subject to change
Φ Cannot be used with IE or IP
* Cannot use with UN voltage
+ Requires U-Channel bracket for Flange install. Consult factory.

✓ Not IP65

www.newstarlighting.com

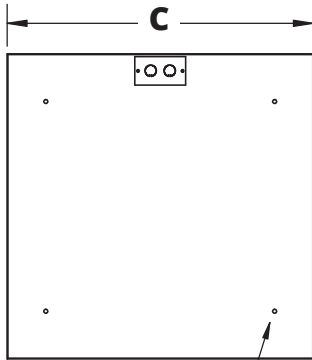
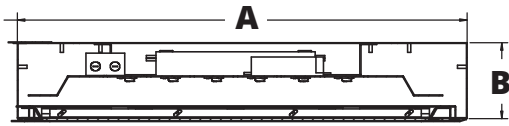
Page 1/2

773.847.1400

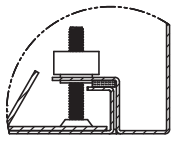
V12152017

DIMENSIONAL DATA

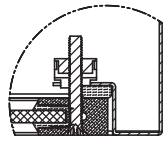
SURFACE MOUNTING (S)



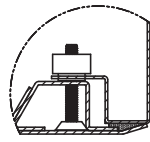
SS22: 4x Ø.31" HOLE
 SS24: 6x Ø.31" HOLE



INSET FRAME



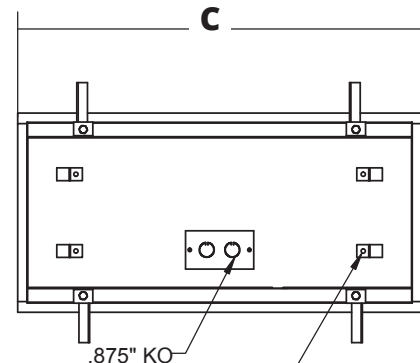
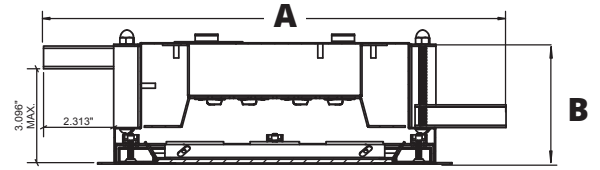
ALUMINUM EXTRUDED
 INSET FRAME



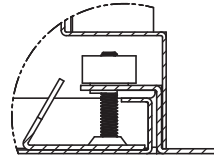
OVERLAPPING FRAME

	A	B	C
SSS22	24.00"	3.94"	24.07"
SSS24	24.00"	3.94"	48.07"
SSR22	23.69"	4.00"	23.69"
SSR24	23.69"	4.00"	47.69"

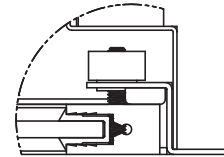
RECESSED MOUNTING (R): GRID & FLANGE



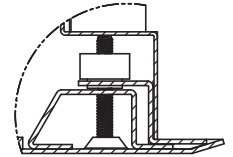
(4) Ø .250"
 HOLES FOR CEILING WIRE ATTACHMENT



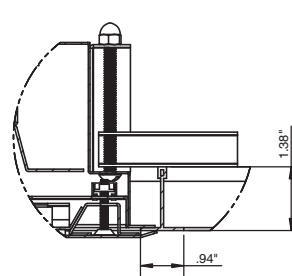
IC FRAME DETAIL



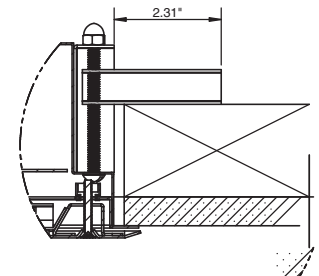
IE FRAME DETAIL



OC FRAME DETAIL



SSR (W/ OC FRAME) RECESSED GRID



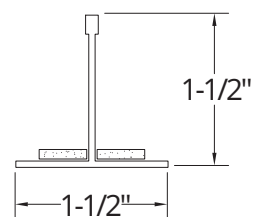
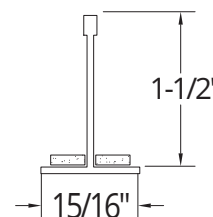
SSR (W/ OC FRAME) RECESSED FLANGE

RECOMMENDED CEILING CUT OUTS:

SSR22: 22.88" X 22.88"
 SSR24: 22.88" X 46.88"

GRID COMPATIBILITY:

Spaced at 24" x 48" Centers



Notes:
 Specifications and Dimensions are subject to change without notice.
 For additional options and dimensional details please consult your New Star Lighting Representative.