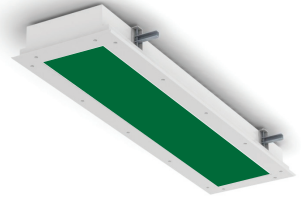


STARSURGICAL GREEN 12-14 LED

SSS12/SSS14/SSG12/SSG14/SSF12/SSF14

SPECIFICATION FEATURES

- HOUSING:** 20 gauge formed cold rolled steel housing with continuous seam welds. Aluminum and stainless steel option available.
- FRAME:** Inset extruded door available in anodized aluminum or white painted aluminum. Overlapping door frame available in aluminum, cold rolled steel, and stainless steel. Frame fastened to housing via aircraft cable.
- LENS:** Acrylic lens smooth side out. Optional symmetric/asymmetric pattern with RFI Grid. Overlapping frame uses a rail hold down system.
- LED:** Optional Green LED boards for surgical settings or a mix of White and Green LED boards available. White color temperatures available in 3500°K, 4000°K and 5000°K. Other color temperatures available, consult factory. Standard 0-10V dimming with 10-100% range.
- FASTENERS:** Philips flat head screws with captive cage nuts.
- FINISH:** White antimicrobial powder coat finish following iron phosphate pre-treatment.
- GASKET:** Closed cell PVC or extruded silicone gaskets prevent air contaminations from entering the fixture.



APPLICATION: Operating Rooms, Examination Rooms, Isolation Suites, Laboratories, and more.

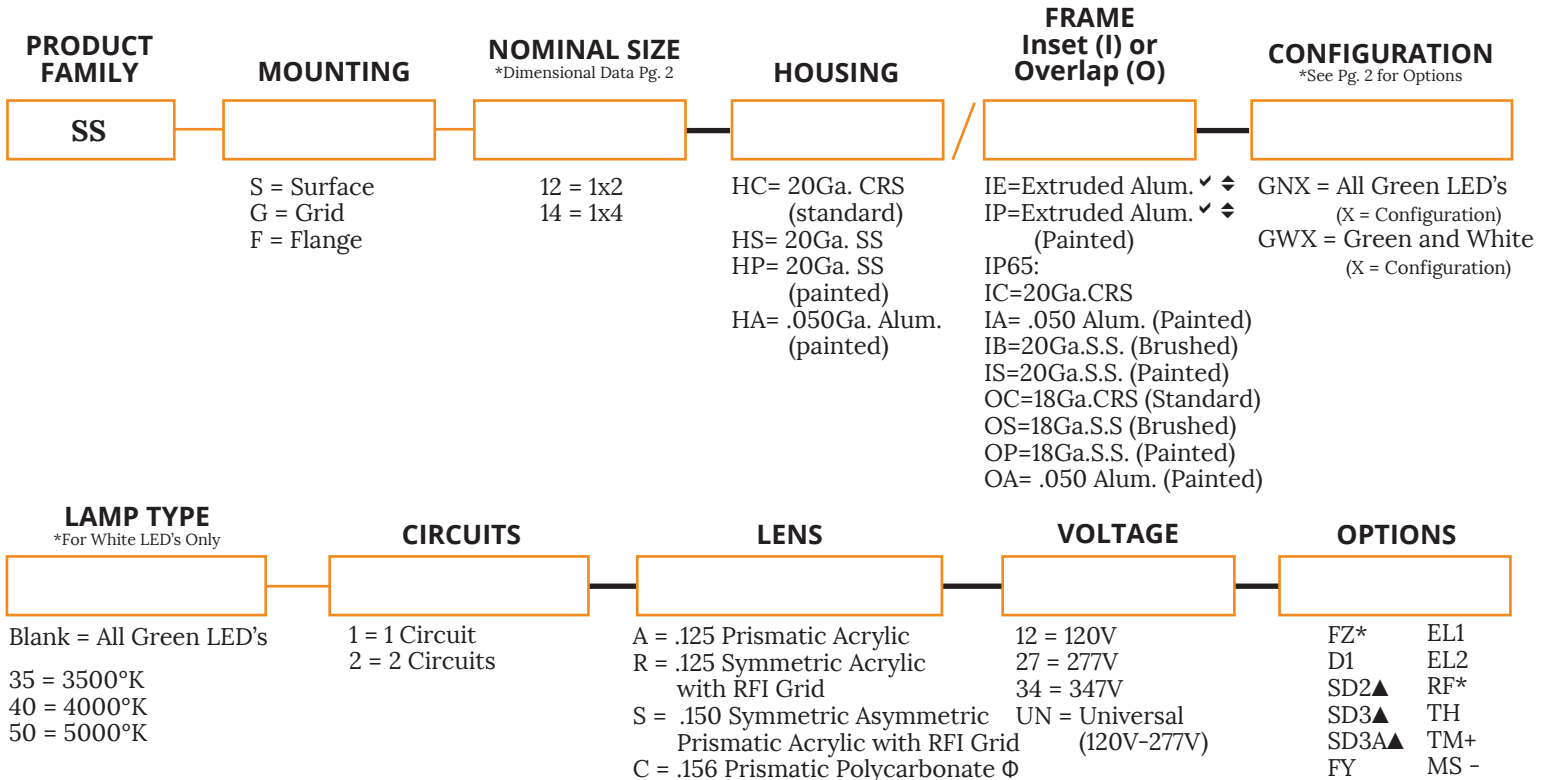
MOUNTING: Flange fixtures come with adjustable 90° swing arm for easy installation. Optional Yoke Bracket would replace swing arm.

LABEL: Fixture is certified to UL standards for Damp Location. Certified IP65, ISO4, and NSF.



ORDERING INFORMATION

Ex: SSG12-HC/IA-GWG351-S-UN



KEY

- FZ = Fuse*
D1 = 0-10V dimming with 1-100% range
SD2 = Step Dim. Module (50-100%)▲
SD3 = Step Dim. Module (25-50-100%) ▲
SD3A = Step Dim. Module (33-66-100%)▲
- FY = Yoke Bracket for Flange mount (Replace swing arm system)
EL1 = Emerg. Bat. LED Low
EL2 = Emerg. Bat. LED High
RF = (RIF) Radio Interference Filter*
- TH = Torx Head screws (with center pin)
TM = Tandem Mount +
MS = MIL STD 461F-
- ✓ Not IP65
◆ Must use .156 Pris. Poly Lens
Φ Must be used with IE or IP
* Cannot use with UN voltage
+ Not available with Grid
▲ Not available in 277V
- Must use S or C Lens

Notes:
Specifications and Dimensions are subject to change without notice.
For additional options and dimensional details please consult your New Star Lighting Representative.

STARSURGICAL GREEN 12-14 LED

SSS12/SSS14/SSG12/SSG14/SSF12/SSF14



CONFIGURATION OPTIONS

*Additional configurations available, consult factory.

GNX = All Green LED's

X = Configuration



A

2 Rows of Green LED's



B

3 Rows of Green LED's



C

4 Rows of Green LED's

GWX = Green and White LED's

X = Configuration



A

(One Green Row,
One White Row)



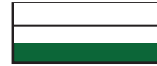
B

(2 White Rows Outer
1 Green Row Center)



C

(2 Green Rows Outer,
1 White Row Center)



D

(2 White Rows,
1 Green Row)



E

(2 Green Rows,
1 White Rows)



F

(Every Other Row)



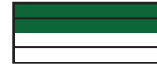
G

(2 White Rows Outer,
2 Green Rows Center)



H

(2 Green Rows Outer,
2 White Rows Center)



I

(2 Green Rows,
2 White Rows)

DIMENSIONAL DATA

Updated Dimensional Drawings Coming Soon.

Notes:

Specifications and Dimensions are subject to change without notice.

For additional options and dimensional details please consult your New Star Lighting Representative.