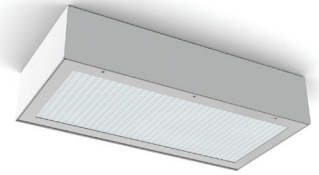


# 53 SERIES LED

5312/5314

## SPECIFICATION FEATURES

- HOUSING:** Die formed, seam welded, and ground smooth cold rolled steel or stainless steel non-clamshell design. Incorporates a removable reflector unitized with all electrical components for easy installation and maintenance.
- FRAME:** Die formed one-piece frame with tightly closed corners (material and gauge to match housing).
- HINGE:** 16 gauge full length continuous, staked piano hinge with welded ends to prevent removal (material to match housing).
- LENS:** Outer and Inner lens options secured by "Z" retainers with weld studs spaced six inches apart for maximum strength.
- LED:** Available in three color temperatures 3500°K, 4000°K and 5000°K. Other color temperatures available, consult factory. Standard 0-10V driver provided. Optional dimming function (DM) with 10-100% range.
- FASTENERS:** Tamper resistant countersunk flat head Torx screws with center pin reject.
- FINISH:** White powder coat finish following iron phosphate pre-treatment.
- GASKET:** Black neoprene gasket around door frame to prevent light leaks.



### APPLICATION:

Minimum to Supermax Confinement, Psychiatric Wards, Public Housing, Detention Centers, Transportation, Athletic Facilities, and more.

### MOUNTING:

Surface installation.

### LABEL:

Fixture is certified to UL standards.



## ORDERING INFORMATION

Ex: 5312-A-L2401-0/C-UN

| PRODUCT FAMILY                  | NOMINAL SIZE<br><small>*Dimensional Data Pg. 2</small>   | GAUGE  | LUMEN** OUTPUT<br><small>*Performance Data Pg. 2</small>             | LAMP TYPE                                      |
|---------------------------------|--|--|--|--|
| 53                              | 12 = 1x2<br>14 = 1x4   | A = 12Ga. CRS<br>B = 14Ga. CRS<br>C = 16Ga. CRS<br>D = 18Ga. CRS<br>E = 14Ga. SS (Brushed)<br>F = 16Ga. SS (Brushed)<br>G = 18Ga. SS (Brushed)<br>H = 14Ga. SS (Painted)<br>J = 16Ga. SS (Painted)<br>K = 18Ga. SS (Painted) | L2 = Standard<br>L3 = Medium   | 35 = 3500°K<br>40 = 4000°K<br>50 = 5000°K      |
| CIRCUITS                        | OUTER LENS   | INNER LENS   | VOLTAGE  | OPTIONS  |
| 1 = 1 Circuit<br>2 = 2 Circuits | 0 = No Lens<br>A = .125 Clear Poly.<br>B = .156 Clear Poly.<br>1 = .187 Clear Poly.<br>2 = .250 Clear Poly.<br>3 = .375 Clear Poly.<br>4 = .500 Clear Poly.<br>5 = .187 Clear Temp. Glass<br>6 = .250 Clear Temp. Glass<br>7 = .375 Clear Temp. Glass^<br>8 = .500 Clear Temp. Glass^<br>9 = .750 Clear Temp. Glass^<br>LC3 = .125 White Frosted Poly. | A = .125 Prismatic Acrylic<br>B = .125 Prismatic Poly.<br>C = .156 Prismatic Poly.<br>D = .187 Prismatic Poly.<br>E = .156 Prismatic Temp. Glass<br>F = .156 Prismatic Acrylic<br>G = .140 DR Acrylic                        | 12 = 120V<br>27 = 277V<br>34 = 347V<br>UN = Universal<br>(120V-277V) | FZ*<br>WL<br>CDH<br>LN<br>UV<br>QD<br>AH<br>DM |

### KEY

FZ = Fuse\*

WL = Wet Location

CDH = Concealed Drop Hinge

LN = LED Night Light. Integrated switch allows light levels at 100%, 70%, 40%, and 10% levels.

Notes:

Specifications and Dimensions are subject to change without notice.

For additional options and dimensional details please consult your New Star Lighting Representative.

UV = .005 UV Absorbing Overlay

QD = Quick Disconnect

AH = Allenhead Screws with center pin reject

DM = 0-10V dimming with 10-100% range.

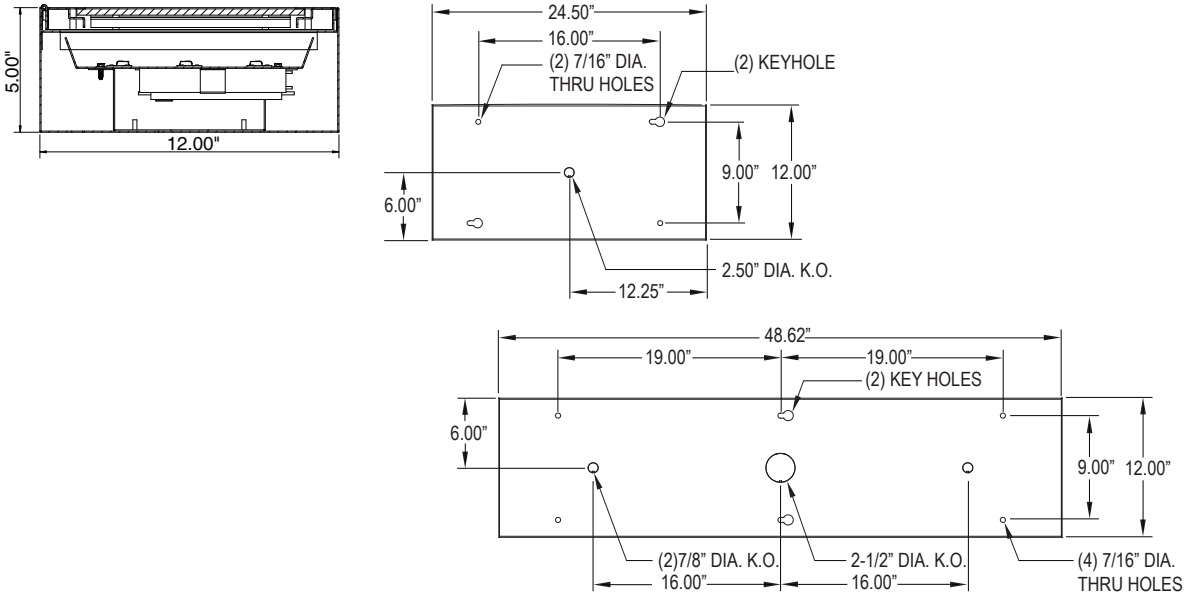
Dimming wires will be extended outside of fixture.

\* Cannot use with UN voltage

\*\* Subject to change

^ Must use with 12Ga. or 14Ga. Frame

## DIMENSIONAL DATA



## PERFORMANCE DATA

| MODEL | OUTPUT   | LAMP TYPE | LUMENS DELIVERED | EFFICACY (lm/W) | INPUT POWER (W) |
|-------|----------|-----------|------------------|-----------------|-----------------|
| 5312  | Standard | 3500°K    | 2875             | 115             | 25              |
|       |          | 4000°K    | 3000             | 120             | 25              |
|       |          | 5000°K    | 3125             | 125             | 25              |
|       | Medium   | 3500°K    | 4180             | 110             | 38              |
|       |          | 4000°K    | 4370             | 115             | 38              |
|       |          | 5000°K    | 4560             | 120             | 38              |
| 5314  | Standard | 3500°K    | 5750             | 115             | 50              |
|       |          | 4000°K    | 6000             | 120             | 50              |
|       |          | 5000°K    | 6250             | 125             | 50              |
|       | Medium   | 3500°K    | 8250             | 110             | 75              |
|       |          | 4000°K    | 8625             | 115             | 75              |
|       |          | 5000°K    | 9000             | 120             | 75              |