

STAIRWELL TRES SERIES LED

STWL2-T/STWL3-T/STWL4-T

SPECIFICATION FEATURES

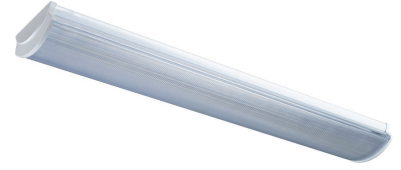
HOUSING: 22 gauge cold rolled steel internally reinforced.

LENS: .10 linear prismatic frosted polycarbonate lens for even light distribution.

LED: Available in 3500°K, 4000°K, and 5000°K. Other color temperatures available, consult factory.

REFLECTOR: 22 gauge cold rolled steel in high reflective white finish.

FINISH: White powder coat finish following multistage iron phosphate pre-treatment.



APPLICATIONS: Public Areas, Corridors, Stairways, Underpasses, Parking Garages, Restrooms, Lobbies, Schools, and more.

MOUNTING: Surface wall mount installation.

LABEL: Fixture is certified to UL standards by Intertek Testing Laboratory.



ORDERING INFORMATION

SERIES	SIZE	STYLE	LUMEN OUTPUT*	LAMP TYPE
STWL	2 = 2ft 3 = 3ft 4 = 4ft	T	L2L = Low** L2 = Standard	35 = 3500°K 40 = 4000°K 50 = 5000°K

*Nominal Size. Dimensional Data on Page 2

Performance data on Page 2
* Subject to change
** L2L for STWL4 Only

VOLTAGE	OPTIONS	ACCESSORY
34 = 347V UN = Universal (120V-277V)	EL1 = Emerg. Batt Low (1100lm)* EL2 = Emerg. Batt. High (2050lm)* OC = Internal Occupancy Sensor** SD2 = Step Dimming (50% - 100%) SD3 = Step Dimming (25% - 50% - 100%)** TH = Torx Head Screws with center pin LN = LED Night Light.	BB = Back Box* CM = Corner Mount Bracket

*Required for Emergency Battery

* Emerg Batt required additional back box
** If SD3 and OC are ordered, SD3 will be set at lowest dimming level unless otherwise specified.

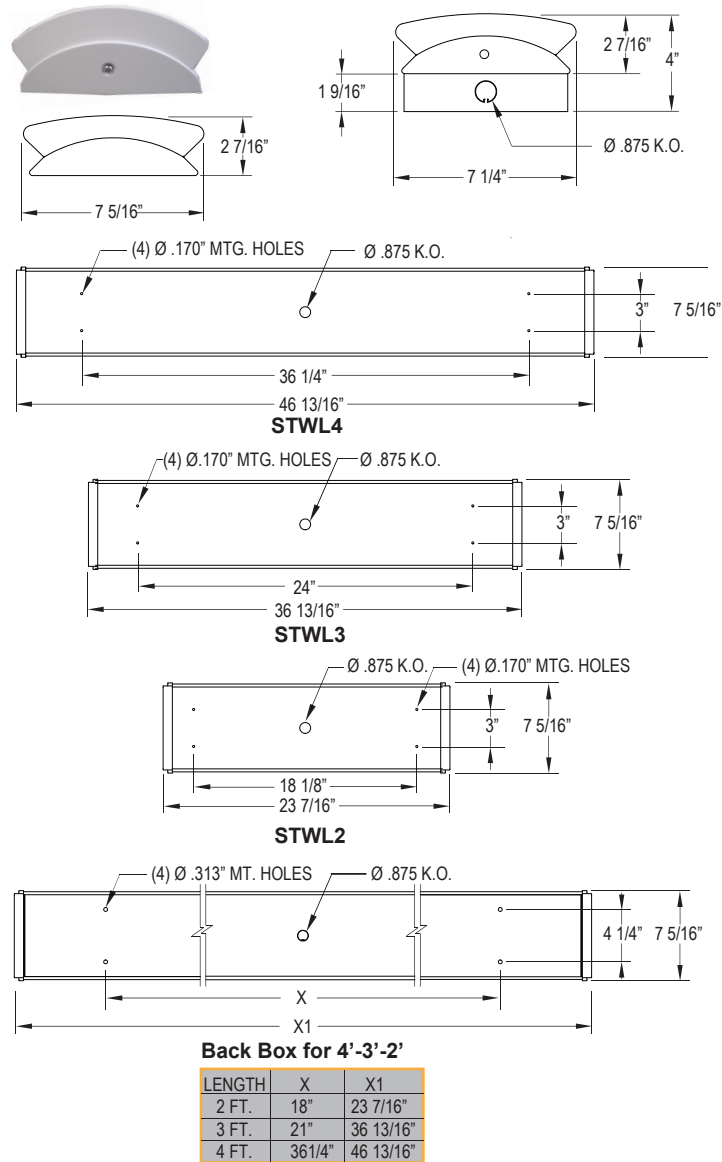
Notes:
Specifications and Dimensions are subject to change without notice.
For additional options and dimensional details please consult your New Star Lighting

STAIRWELL TRES SERIES LED

STWL2-T/STWL3-T/STWL4-T



DIMENSIONAL DATA



PERFORMANCE DATA*

MODEL	OUTPUT	LAMP TYPE	LUMENS DELIVERED	EFFICACY (lm/W)	INPUT POWER (W)
STWL2	Standard	3500°K	1700	89	20
		4000°K	1750	92	20
		5000°K	1800	95	20
STWL3	Standard	3500°K	2900	91	32
		4000°K	2950	92	32
		5000°K	3000	94	32
STWL4	Low	3500°K	4200	98	43
		4000°K	4250	99	43
		5000°K	4300	100	43
	Standard	3500°K	6500	102	64
		4000°K	6550	102	64
		5000°K	6600	103	64

*Subject to change without notice. Visit www.newstarlighting.com for additional information and IES files.

Notes:
Specifications and Dimensions are subject to change without notice.
For additional options and dimensional details please consult your New Star Lighting