

STARCLEAN SERIES LED

SCS12/SCS14/SCR12/SCR14

SPECIFICATION FEATURES

HOUSING: 20 gauge formed cold rolled steel housing with continuous seam welds. Aluminum and stainless steel options available.

FRAME: Inset or overlapping doorframe available in aluminum, cold rolled steel, and stainless steel. Extruded inset door available in anodized aluminum or white painted aluminum. Frame held to housing via aircraft cable.

LENS: Acrylic or polycarbonate lens options - smooth side out. Inset (cold rolled steel, stainless steel and .050 alum) and Overlapping frame uses a rail hold down system.

LED: Available in three color temperatures 3500°K, 4000°K and 5000°K with maximum 3-step MacAdam variation allowance. Other color temperatures available, consult factory. Minimum 80 CRI standard with optional minimum 90 CRI available. 0-10V dimming available with 10-100% range and 1-100% range. Must specify dimming under options.

FASTENERS: Stainless steel Philips flat head screws with captive cage nuts. Finish to match doorframe.

FINISH: White antimicrobial powder coat finish following multistage iron phosphate pre-treatment.

GASKET: Closed cell EPDM and closed cell silicone gaskets prevent air contaminations from entering the fixture. Gasketing seals lens to doorframe and doorframe to housing. Optional triple gasketing, must specify Grid or Flange installation.

ORDERING INFORMATION

Example: SCR14-HC/OC-L4401C-A-UN



APPLICATIONS: Cleanrooms, Hospitals, Hi-Tech Manufacturing, Laboratory, Food Processing Facilities, Commercial Kitchens, and more.

MOUNTING: Surface (S) or Recessed (R) installation. Recessed mounting accommodates Grid and Flange installations. Recessed fixtures will be supplied with adjustable swing arms that can be used for Flange applications or taped to the side for Grid applications. Recessed install compatible with 1-1/2" and 15/16" Grid systems. Mounting for custom ceilings available, consult factory.

LABEL: Fixture is certified to UL standards for Wet Location under covered ceiling. IP65 rating. Meets ISO 4/Class 10 Cleanrooms. NSF2 Splash/Non-Food Zone.



SERIES	MOUNTING	SIZE	HOUSING	FRAME	LUMEN OUTPUT*
SC	S = Surface R = Recessed (Grid/Flange)	12 = 1x2 14 = 1x4 *Nominal Size. Dimensional Data on Page 3	HC = 20Ga. CRS Painted HS = 20Ga. SS Brushed HP = 20Ga. SS Painted HA = 16Ga. Alum. Painted	INSET (I) or OVERLAP (O) OC = 18Ga. CRS Painted OS = 18Ga. SS Brushed OP = 18Ga. SS Painted OA = 16Ga. Alum Painted IE = Extruded Alum* IP = Extruded Alum Painted* IC = 20Ga. CRS Painted IA = 16Ga. Alum Painted IB = 20Ga. SS Brushed IS = 20Ga. SS Painted	L2 = Low L3 = Standard L4 = High CL = Custom Lumen Output** *Subject to change. Performance Data on Page 2. ** Must be specified at time of quote. Must not exceed fixture maximum output

* Not IP65. N/A with .187 Prismatic Poly. lens

COLOR TEMP.	CIRCUITS	LENS	VOLTAGE	OPTIONS
-------------	----------	------	---------	---------

35 = 3500°K 40 = 4000°K 50 = 5000°K	1C = 1 Circuit 2C = 2 Circuits	A = .125 Prismatic Acrylic B = .125 Prismatic Polv. C = .156 Prismatic Polv. D = .187 Prismatic Polv.* E = .125 White Frost Polv. G = .140 DR Acrylic	12 = 120V 27 = 277V 34 = 347V UN = Universal (120V-277V)	DM = 0-10V dimming with 10-100% range DM1 = 0-10V dimming with 1-100% range FZ1 = Fuse (120V) FZ2 = Fuse (277V) SD2 = Step Dim. Module (50-100%) SD3 = Step Dim. Module (30-70-100%) EL1 = Emera. Bat. LED Low (1100-1250 lm)* EL2 = Emera. Bat. LED High (2200-2500 lm)* RF1 = (RIF) Radio Interference Filter (120V) RF2 = (RIF) Radio Interference Filter (277V) TH = Torx Head screws (with center pin) TM = Tandem Mount** 90C = 90 CRI TGG = Triple Gasketing (Grid) TGF = Triple Gasketing (Flange) IP66 = IP66 Rated (Overlapping frame only)
---	-----------------------------------	--	--	--

* Cannot use with IE or IP

* SC1x2 Remote Battery. Consult factory for CA Title 24 options
** Requires joiner bracket. Supplied with fixture.

Notes:
Specifications and Dimensions are subject to change without notice.
For additional options and dimensional details please consult your New Star Lighting Representative.

STARCLEAN SERIES LED

SCS12/SCS14/SCR12/SCR14



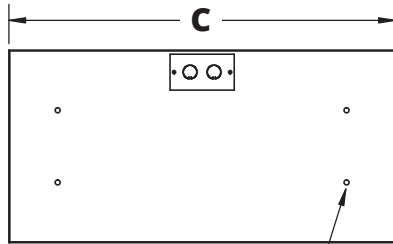
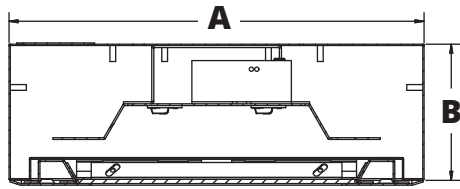
PERFORMANCE DATA*

MODEL	OUTPUT	LAMP TYPE	LUMENS DELIVERED	EFFICACY (lm/W)	INPUT POWER (W)
SC12	Low (L2)	3500°K	2875	115	25
		4000°K	3000	120	25
		5000°K	3125	125	25
	Standard (L3)	3500°K	4180	110	38
		4000°K	4370	115	38
		5000°K	4560	120	38
	High (L4)	3500°K	5500	110	50
		4000°K	5750	115	50
		5000°K	6000	120	50
SC14	Low (L2)	3500°K	5750	115	50
		4000°K	6000	120	50
		5000°K	6250	125	50
	Standard (L3)	3500°K	8250	110	75
		4000°K	8625	115	75
		5000°K	9000	120	75
	High (L4)	3500°K	11000	110	100
		4000°K	11500	115	100
		5000°K	12000	120	100

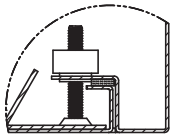
*Displayed information is with a .125 Prismatic Polycarbonate.
LEDs are frequently updated therefore values may change without notice.
Visit www.newstarlighting.com for additional information and IES files.

DIMENSIONAL DATA

SURFACE MOUNTING (S)



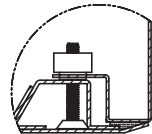
SCS12: (4) Ø.31" HOLE
SCS14: (6) Ø.31" HOLE



INSET FRAME



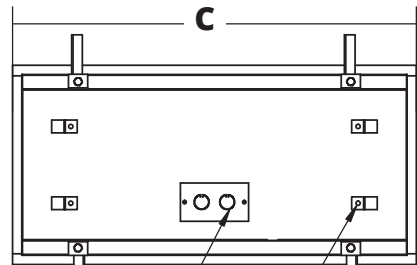
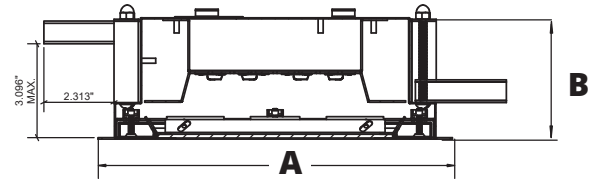
ALUMINUM EXTRUDED
INSET FRAME



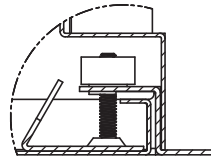
OVERLAPPING FRAME

	A	B	C
SCS12	12.00"	3.94"	24.07"
SCS14	12.00"	3.94"	48.07"
SCR12	11.69"	4.00"	23.69"
SCR14	11.69"	4.00"	47.69"

RECESSED MOUNTING (R): GRID & FLANGE



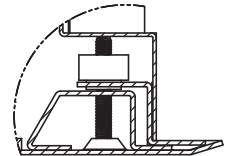
(4) Ø .250" HOLES FOR CEILING WIRE ATTACHMENT



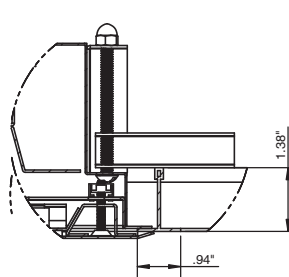
IC FRAME DETAIL



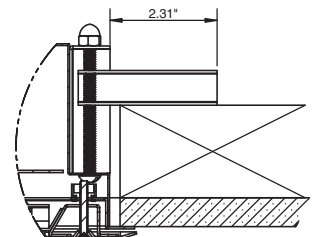
IE FRAME DETAIL



OC FRAME DETAIL



SCR (W/ OC FRAME) RECESSED GRID



SCR (W/ OC FRAME) RECESSED FLANGE

RECOMMENDED CEILING CUT OUTS:

SCR12: 10.88" X 22.88"
SCR14: 10.88" X 46.88"

GRID COMPATIBILITY:

SCR12: Spaced at 12" x 24" Centers
SCR14: Spaced at 12" x 48" Centers

