

STARCLEAN SERIES LED

SCS12/SCS14/SCR12/SCR14

SPECIFICATION FEATURES

HOUSING: 20 gauge formed cold rolled steel housing with continuous seam welds. Aluminum and stainless steel options available.

FRAME: Inset or overlapping doorframe available in aluminum, cold rolled steel, and stainless steel. Extruded inset door available in anodized aluminum or white painted aluminum. Frame held to housing via aircraft cable.

LENS: Acrylic lens with smooth side out. Alternate lens options available including Prismatic Polycarbonate and a White Frosted Polycarbonate. Inset (cold rolled steel, stainless steel and .050 alum) and Overlapping frame uses a rail hold down system.

LED: Available in three color temperatures 3500°K, 4000°K and 5000°K. Other color temperatures available, consult factory. 0-10V dimming available with 10-100% range and 1-100% range. Must specify dimming under options.

FASTENERS: Stainless steel Philips flat head screws with captive cage nuts. Finish to match housing.

FINISH: White antimicrobial powder coat finish following multistage iron phosphate pre-treatment.

GASKET: Closed cell EPDM and closed cell silicone gaskets prevent air contaminations from entering the fixture.

ORDERING INFORMATION

Example: SCR14-HC/OC-L4401C-A-UN



APPLICATIONS: Cleanrooms, Hospitals, Hi-Tech Manufacturing, Laboratory, Food Processing Facilities, Commercial Kitchens, and more.

MOUNTING: Surface (S) or Recessed (R) installation. Recessed mounting accommodates Grid and Flange installations. Recessed fixtures will be supplied with adjustable swing arms that can be used for Flange applications or taped to the side for Grid applications. Recessed install compatible with 1-1/2" and 15/16" Grid systems. Mounting for custom ceilings available, consult factory.

LABEL: Fixture is certified to UL standards. Certified IP65, ISO4, and NSF.



SERIES	MOUNTING	SIZE	HOUSING	FRAME	LUMEN OUTPUT*
SC					

S = Surface
R = Recessed
(Grid/Flange)

12 = 1x2
14 = 1x4

HC = 20Ga. CRS Painted
HS = 20Ga. SS Brushed
HP = 20Ga. SS Painted
HA = 16Ga. Alum. Painted

INSET (I) or OVERLAP (O)*
OC = 18Ga. CRS Painted
OS = 18Ga. SS Brushed
OP = 18Ga. SS Painted
OA = 16Ga. Alum Painted
IE = Extruded Alum**
IP = Extruded Alum Painted**
IC = 20Ga. CRS Painted
IA = 16Ga. Alum Painted
IB = 20Ga. SS Brushed
IS = 20Ga. SS Painted

L2 = Low
L3 = Standard
L4 = High

*Nominal Size. Dimensional Data on Page 3

*Subject to change

* Overlap frame is IP66 rated

** Not IP65. N/A with .187 Prismatic Poly. lens

LAMP TYPE	CIRCUITS	LENS	VOLTAGE	OPTIONS

35 = 3500°K
40 = 4000°K
50 = 5000°K

1C = 1 Circuit
2C = 2 Circuits

A = .125 Prismatic Acrylic
B = .125 Prismatic Poly.
C = .156 Prismatic Poly.
D = .187 Prismatic Poly.*
E = .125 White Frost Poly.
G = .140 DR Acrylic

12 = 120V
27 = 277V
34 = 347V
UN = Universal
(120V-277V)

FZ = Fuse*
DM = 0-10V dimming with 10-100% range
DM1 = 0-10V dimming with 1-100% range
SD2 = Step Dim. Module (50-100%)
SD3 = Step Dim. Module (25-50-100%)
IP66 = IP66 rating (only with Overlap Frame)
FY = Yoke Bracket (Replaces swing arm)
EL1 = Emerg. Bat. LED Low (1100-1250 lm)
EL2 = Emerg. Bat. LED High (2200-2500 lm)
RF = (RIF) Radio Interference Filter*
TH = Torx Head screws (with center pin)
TM = Tandem Mount**
CEL1 = CA Title 24 Emerg. Batt LED Low
CEL2 = CA Title 24 Emerg. Batt LED High

* Cannot use with IE or IP

* Cannot use with UN voltage

** Requires joiner bracket. Supplied with fixture.

Notes:
Specifications and Dimensions are subject to change without notice.
For additional options and dimensional details please consult your New Star Lighting

STARCLEAN SERIES LED

SCS12/SCS14/SCR12/SCR14



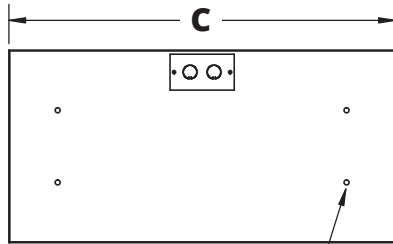
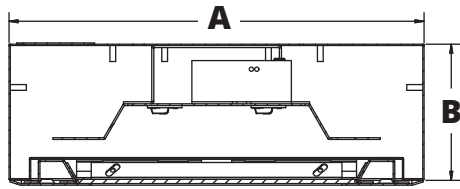
PERFORMANCE DATA*

MODEL	OUTPUT	LAMP TYPE	LUMENS DELIVERED	EFFICACY (lm/W)	INPUT POWER (W)
SC12	Low	3500°K	2875	115	25
		4000°K	3000	120	25
		5000°K	3125	125	25
	Standard	3500°K	4180	110	38
		4000°K	4370	115	38
		5000°K	4560	120	38
	High	3500°K	5500	110	50
		4000°K	5750	115	50
		5000°K	6000	120	50
SC14	Low	3500°K	5750	115	50
		4000°K	6000	120	50
		5000°K	6250	125	50
	Standard	3500°K	8250	110	75
		4000°K	8625	115	75
		5000°K	9000	120	75
	High	3500°K	11000	110	100
		4000°K	11500	115	100
		5000°K	12000	120	100

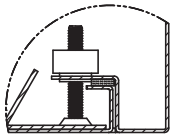
Displayed information is with a .125 Prismatic Polycarbonate. *Subject to change without notice. Visit www.newstarlighting.com for additional information and IES files.

DIMENSIONAL DATA

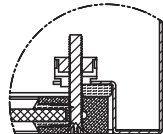
SURFACE MOUNTING (S)



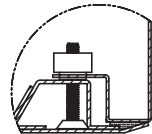
SCS12: (4) Ø.31" HOLE
SCS14: (6) Ø.31" HOLE



INSET FRAME



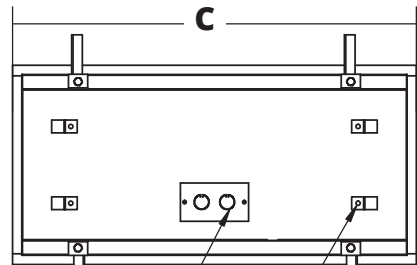
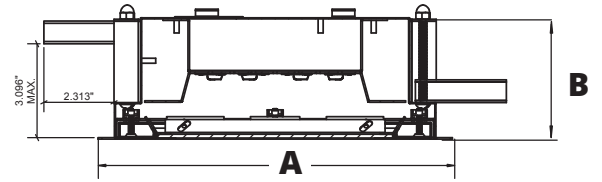
ALUMINUM EXTRUDED
INSET FRAME



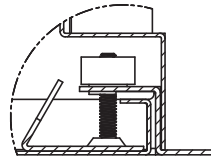
OVERLAPPING FRAME

	A	B	C
SCS12	12.00"	3.94"	24.07"
SCS14	12.00"	3.94"	48.07"
SCR12	11.69"	4.00"	23.69"
SCR14	11.69"	4.00"	47.69"

RECESSED MOUNTING (R): GRID & FLANGE



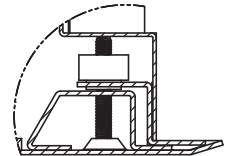
(4) Ø .250" HOLES FOR CEILING WIRE ATTACHMENT



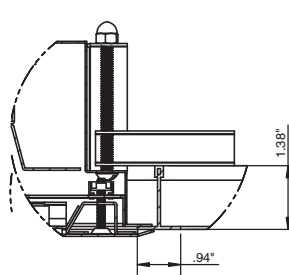
IC FRAME DETAIL



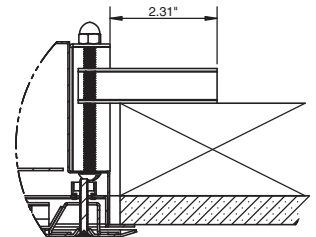
IE FRAME DETAIL



OC FRAME DETAIL



SCR (W/ OC FRAME) RECESSED GRID



SCR (W/ OC FRAME) RECESSED FLANGE

RECOMMENDED CEILING CUT OUTS:
SCR12: 10.88" X 22.88"
SCR14: 10.88" X 46.88"

GRID COMPATIBILITY:

Spaced at 24" x 48" Centers

