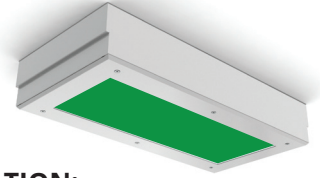


STARSURGICAL GREEN 12-14 LED

SSS12/SSS14/SSR12/SSR14

SPECIFICATION FEATURES

- HOUSING:** 20 gauge formed cold rolled steel housing with continuous seam welds. Aluminum and stainless steel options available.
- FRAME:** Inset and overlapping doorframe available in aluminum, cold rolled steel, and stainless steel. Inset extruded door available in anodized aluminum or white painted aluminum. Frame held to housing via aircraft cable.
- LENS:** Acrylic lens with optional RFI and symmetric/asymmetric pattern, smooth side out. Inset (cold rolled steel, stainless steel and .050 alum) and Overlapping frame uses a rail hold down system.
- LED:** Available with Green LED's only or Green and White LED's. Green LED's will be installed every other row, unless otherwise specified. White color temperatures available in 3500°K, 4000°K and 5000°K. 0-10V dimming available with 10-100% range and 1-100% range. Must specify dimming under options.
- FASTENERS:** Stainless steel Philips flat head SSrews with captive cage nuts. Finish to match housing.
- FINISH:** White antimicrobial powder coat finish following multistage iron phosphate pre-treatment.
- GASKET:** Closed cell EPDM and closed cell silicone gaskets prevent air contaminations from entering the fixture.



APPLICATION:

Surgical Suites, Operating Rooms, Examination Rooms, Isolation Suites, Laboratories, and more.

MOUNTING:

Surface (S) or Recessed (R) installation. Recessed mounting accommodates Grid and Flange installations. Recessed fixtures will be supplied with adjustable swing arms that can be used for Flange applications or taped to the side for Grid applications. Recessed install compatible with 1-1/2" and 15/16" Grid systems. Mounting for custom ceilings available, consult factory.

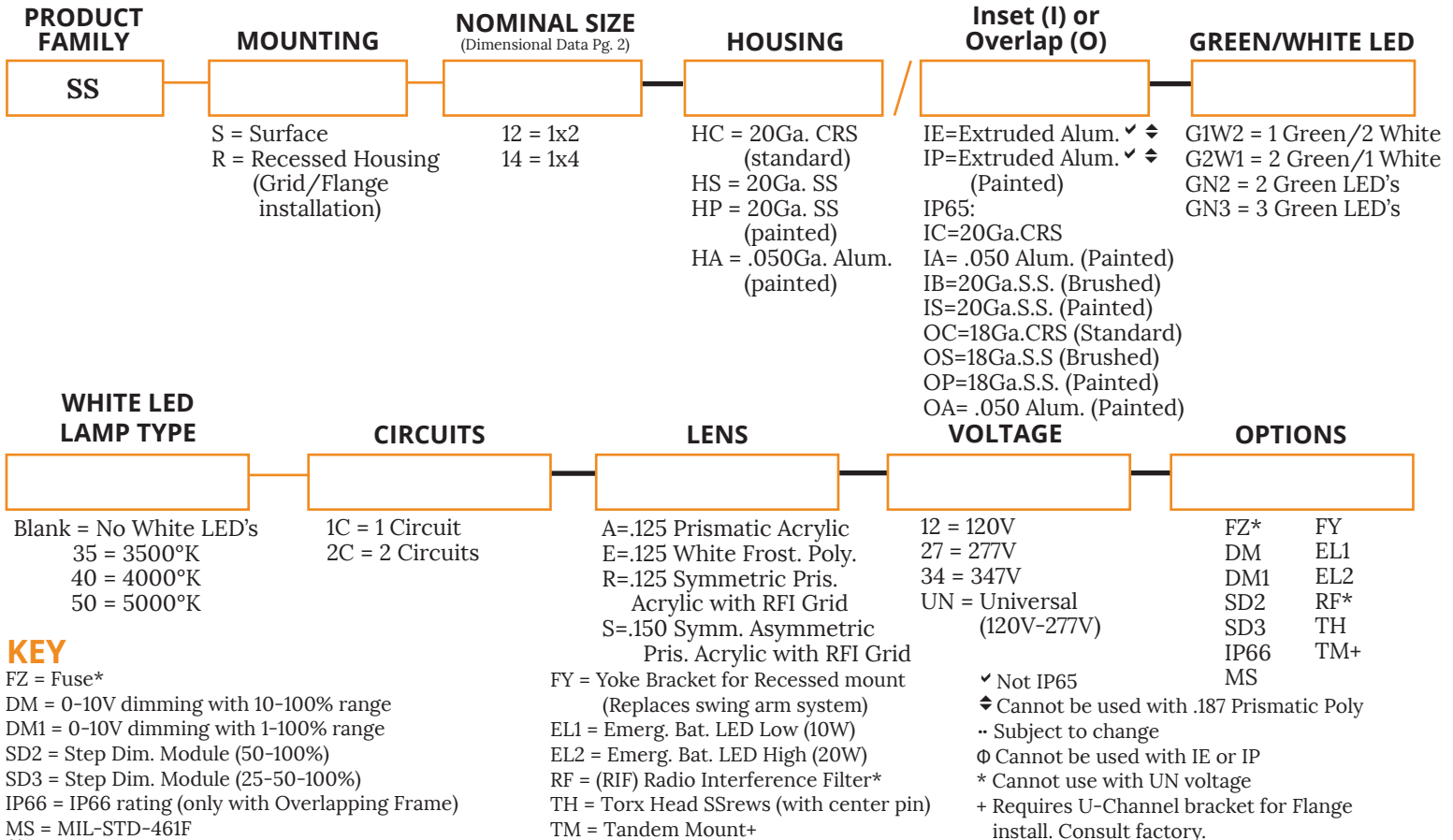
LABEL:

Fixture is certified to UL standards. Certified IP65, ISO4, and NSF.



ORDERING INFORMATION

Ex: SSR12-HC/IC-G1W1352C-A-UN



KEY

- FZ = Fuse*
DM = 0-10V dimming with 10-100% range
DM1 = 0-10V dimming with 1-100% range
SD2 = Step Dim. Module (50-100%)
SD3 = Step Dim. Module (25-50-100%)
IP66 = IP66 rating (only with Overlapping Frame)
MS = MIL-STD-461F

Notes:

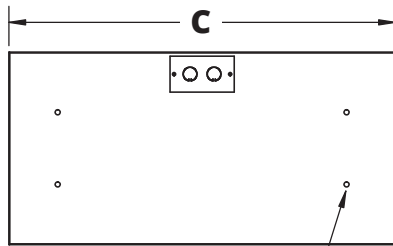
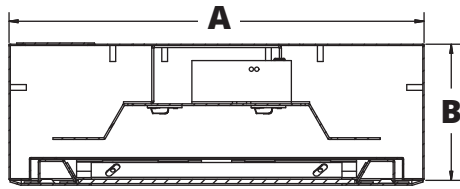
Specifications and Dimensions are subject to change without notice.

For additional options and dimensional details please consult your New Star Lighting Representative.

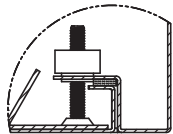
- ✓ Not IP65
◆ Cannot be used with .187 Prismatic Poly
.. Subject to change
Φ Cannot be used with IE or IP
* Cannot use with UN voltage
+ Requires U-Channel bracket for Flange install. Consult factory.

DIMENSIONAL DATA

SURFACE MOUNTING (S)



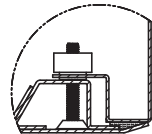
SS12: (4) Ø.31" HOLE
SS14: (6) Ø.31" HOLE



INSET FRAME



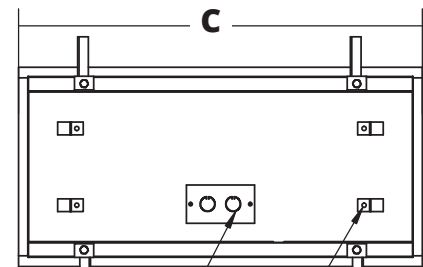
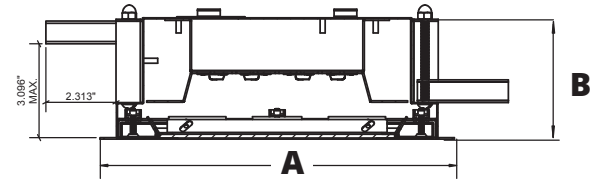
ALUMINUM EXTRUDED
INSET FRAME



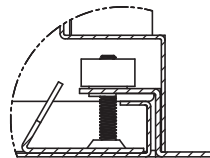
OVERLAPPING FRAME

	A	B	C
SSS12	12.00"	3.94"	24.07"
SSS14	12.00"	3.94"	48.07"
SSR12	11.69"	4.00"	23.69"
SSR14	11.69"	4.00"	47.69"

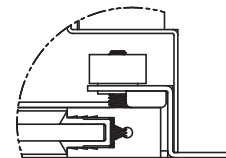
RECESSED MOUNTING (R): GRID & FLANGE



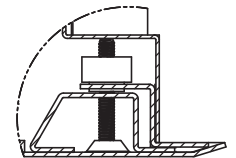
(4) Ø .250" HOLES FOR CEILING WIRE ATTACHMENT



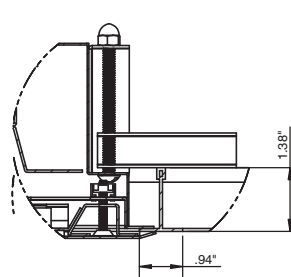
IC FRAME DETAIL



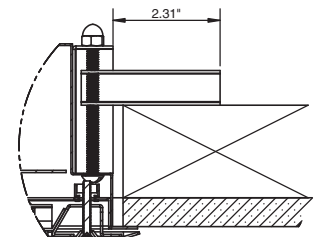
IE FRAME DETAIL



OC FRAME DETAIL



SSR (W/ OC FRAME) RECESSED GRID



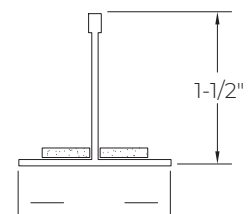
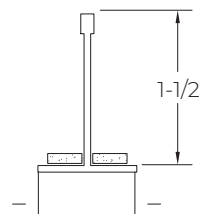
SSR (W/ OC FRAME) RECESSED FLANGE

RECOMMENDED CEILING CUT OUTS:

SSR12: 10.88" X 22.88"
SSR14: 10.88" X 46.88"

GRID COMPATIBILITY:

Spaced at 24" x 48" Centers



Notes:
Specifications and Dimensions are subject to change without notice.
For additional options and dimensional details please consult your New Star Lighting Representative.

PERFORMANCE DATA

GREEN LEDs	OUTPUT	LUMENS DELIVERED	EFFICACY (lm/W)	INPUT POWER (W)
SS12	GN2	1450	52	28
	GN3	2200	52	42
SS14	GN2	2900	52	56
	GN3	4400	52	84

GREEN/WHITE LEDs	OUTPUT	WHITE LED				GREEN LED		
		LAMP TYPE	LUMENS DELIVERED	EFFICACY (lm/W)	INPUT POWER (W)	LUMENS DELIVERED	EFFICACY (lm/W)	INPUT POWER (W)
SS12	G1/W2	3500°K	2875	115	25	725	52	14
		4000°K	3000	120	25	725	52	14
		5000°K	3125	125	25	725	52	14
	G2/W1	3500°K	1438	115	12.5	1450	36	28
		4000°K	1500	120	12.5	1450	36	28
		5000°K	1563	125	12.5	1450	36	28
SS14	G1/W2	3500°K	5750	115	50	1450	52	28
		4000°K	6000	120	50	1450	52	28
		5000°K	6250	125	50	1450	52	28
	G2/W1	3500°K	2875	115	25	2900	52	56
		4000°K	3000	120	25	2900	52	56
		5000°K	3125	125	25	2900	52	56

Notes:
 Specifications and Dimensions are subject to change without notice.
 For additional options and dimensional details please consult your New Star Lighting Representative.