

STARCLEAN UTILITY: QUICK SHIP

SCU22/SCU24

FEATURES:

- Intended for Healthcare Settings, Alternative Care Facilities, Hospitals, Cleanrooms, Laboratories, Food Processing Facilities, IES Class 100, and more
- 10 Day Quick Ship for orders under 50 fixtures. Consult factory for large quantities or additional fixture options
- The SCU has a Wet Location rating and is ISO5 certified
- Available in a 2x2 and 2x4
- Comes in 4000°K with two lumen packages
- This product complies with the Buy American Act requirements



SCU22

RELATED PRODUCTS:

- [StarClean Recessed Series \(SCR\)](#)
- [StarClean Surface Series \(SCS\)](#)



SPECIFICATIONS

HOUSING: 20 gauge formed cold rolled steel housing.

FRAME: Inset extruded door available in aluminum. Door sealed to housing with latch (standard).

LENS: Prismatic acrylic lens.

LED: Available in 4000°K with maximum 3-step MacAdam variation allowance.

ELECTRICAL: 0-10V dimming available with 10-100% range (standard).

FINISH: White powder coat finish following multistage iron phosphate pretreatment.

GASKET: Closed cell gasket prevents air contaminations from entering the fixture.

INSTALLATION: Grid mounting.

WARRANTY: Limited five (5) year warranty.

LABEL: Fixture is certified to UL standards by Intertek Testing Laboratories for Wet Location (under covered ceiling). ISO5 Certified.

STARCLEAN UTILITY: QUICK SHIP

SCU22/SCU24

ORDERING INFORMATION

EXAMPLE: SCUG22-HC/IP-L4401C-A-UN-QS

SERIES	MOUNTING	SIZE*	HOUSING	INSET FRAME	LUMEN OUTPUT*
SCU	G		HC	IP	

G = Grid

22 = 2x2

HC = 20Ga. CRS Painted

IP = Extruded Alum. Painted

L4 = Standard

24 = 2x4

L6 = High

*Nominal Size.
Dimensional Data
on page 3.

*Subject to change. Performance
Data on page 3.

COLOR TEMP.*	CIRCUITS	LENS	VOLTAGE	OPTIONS	
40	1C	A	UN		QS

40 = 4000°K

1C = 1 Circuit

A = .125 Prismatic Acrylic

UN = Universal
(120V-277V)

WP = 6ft. Flex Whip. Supply wires
included only unless otherwise specified

QS = Quick Ship

*80 CRI Standard.

FK = Flange Conversion Kit. Consult
factory for additional information.

STARCLEAN UTILITY: QUICK SHIP

SCU22/SCU24

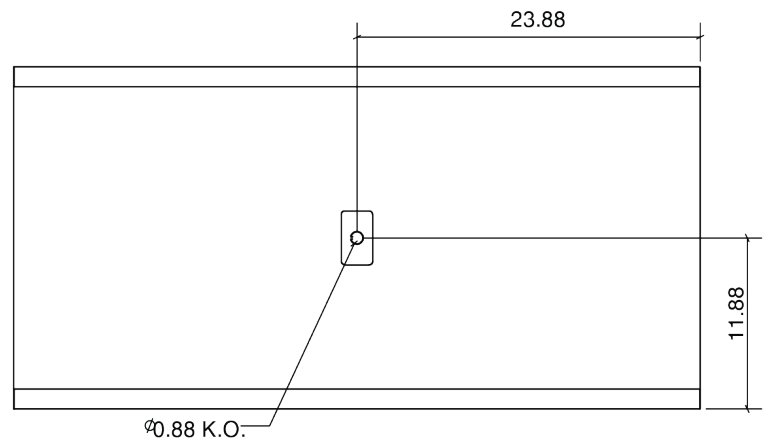
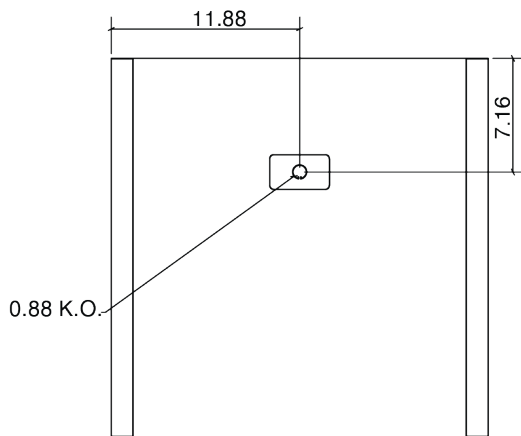
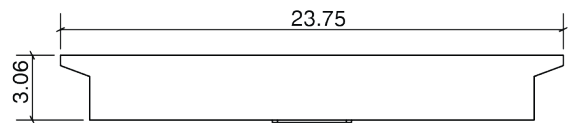
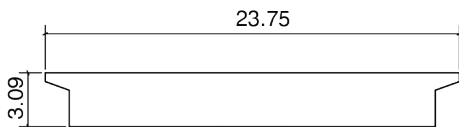


PERFORMANCE DATA*

*Data is with 80 CRI chip. LEDs are frequently updated therefore values may change without notice.

MODEL	OUTPUT	COLOR TEMP.	LUMENS DELIVERED	EFFICACY (lm/W)	INPUT POWER (W)
SCU22	L4 = Standard	4000°K	5000	125	40
	L6 = High		7000	117	60
SCU24	L4 = Standard		10000	125	80
	L6 = High		12500	125	100

DIMENSIONAL DATA



This product complies with the Buy American Act requirements. Specifications and dimensions are subject to change without notice. For additional options and dimensional details, please consult your New Star Lighting representative.