

Lumanique

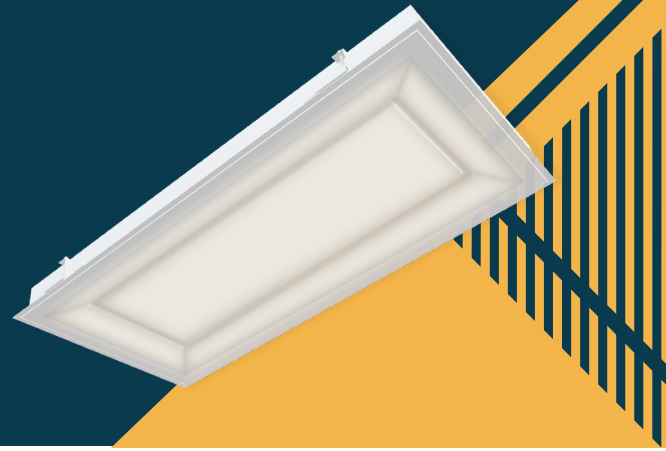
SPDH, SPDA



Transform a room's atmosphere with the Lumanique (SPD) Series. Available in a multi-function unit (ambient, exam, reading, night light) or as ambient only, the SPD is suitable for a wide variety of medical, commercial and specialty applications.

Customize the SPD by mixing and matching functions, lumen packages, various color temperatures and CRI options. The option of incorporating a decorative pattern to the lens or adding an overlay lens to create a flat wipe-down surface gives the Lumanique Series even more flexibility to suit various project requirements.

Lumanique Ambient SPDA



The SPDA was designed to provide a welcoming atmosphere while creating a unique focal point to any space. The unique aesthetic of the fixture can lend itself to various projects from medical to specialty applications. Use the ambient only version for commercial applications or to achieve a high output one-function luminaire for examination rooms.

- Intended for Medical Applications, Commercial Settings, Office Spaces, Schools, Waiting Rooms, Lobbies and more.
- Available in a 1x4 standalone, 2x2 or 2x4
- Lumen output range 12,000lm in a 2x2 for high output exam applications



Optional decorative pattern over ambient chamber

Latches for tool-less access. Electrical components accessible from room-side

Dimensional one-piece acrylic lens for architectural non-clinical aesthetic. Optional clear overlay to provide a flat wipe-down surface for easy cleaning

20-gauge cold rolled steel or 16-gauge aluminum housing and inset frame. Matte white antimicrobial finish. Four inch depth minimizes interference with systems within ceiling plenum

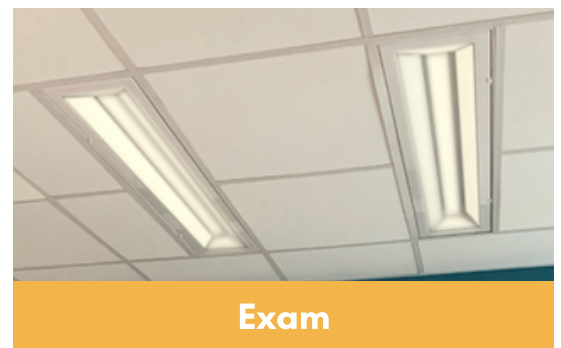
SPD22

Lumanique Multi-Function SPDH

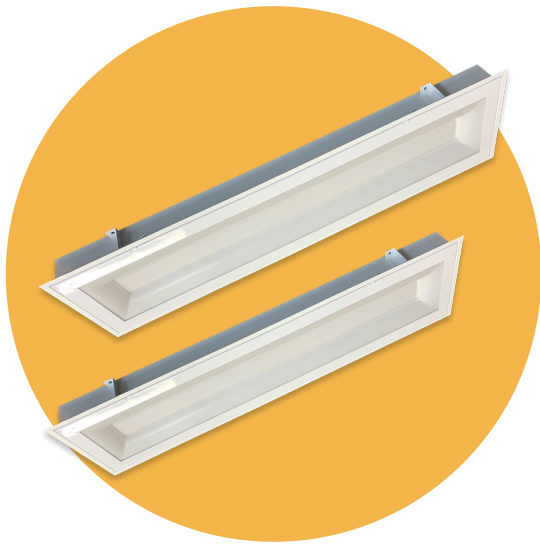


Intended for Patient Rooms, Skilled Nursing Facilities, Labor & Delivery, Convalescent Care, Hospice, and more

- Up to four functions: ambient, exam, reading and night light
- Available in a 1x4 pair (adjacent to patient bed), 1x4 standalone, 2x2 or 2x4
- Dimensional one-piece lens provides an architectural statement
- Optional clear overlay lens provides flat wipe-down surface for easy cleaning. Recommended for medical settings to help fight the spread of infections
- Internal chambers separate functions for individual light control without light leaks
- Each function is separately circuited for individual control
- Various lumen packages: up to 21000lm (all on)
- Available in several color temperatures with 80 CRI and 90 CRI options
- Optional Curbell Low Voltage Controller



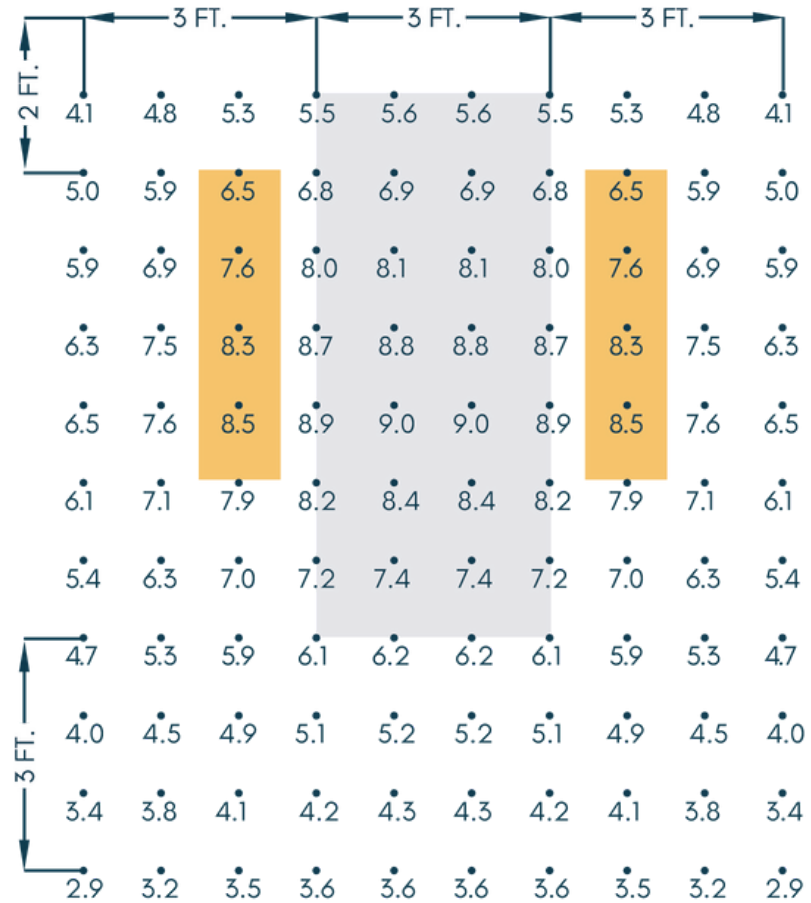
1x4 Pair SPDH Multi-Function Illuminance (Fc)



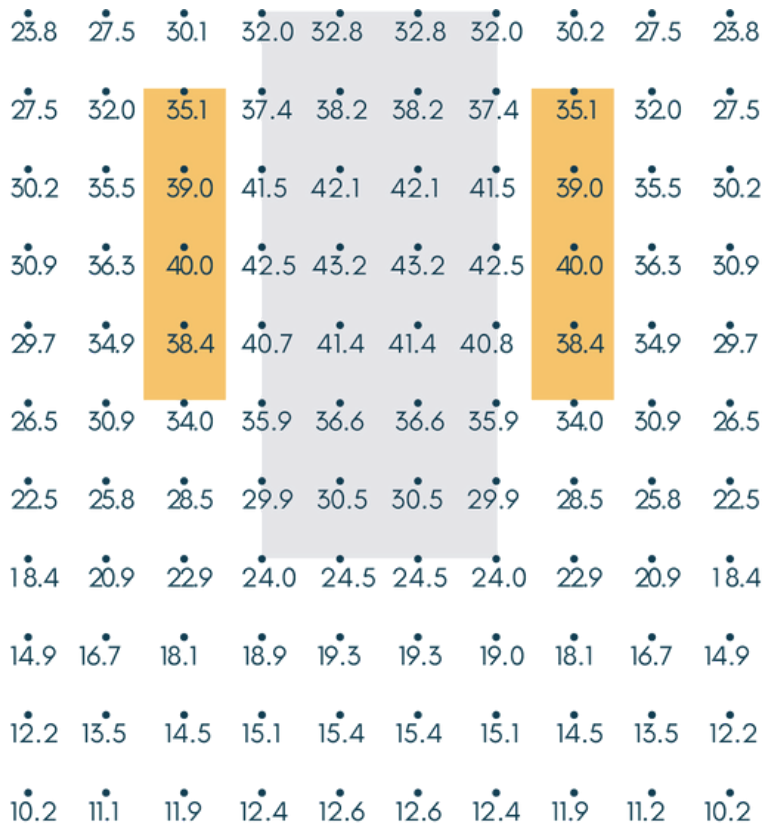
Patient Room Specs:

15' wide x 12' long Room
 9' Ceiling. 3' Workplane
 3' x 7' Bed Spaced 1' from Wall
 Fixture Spaced 2' from Wall
 Reflectance 80 ceiling/50 wall/20 floor
 Performance data is based off 80 CRI at 4000°K. Discount 10-15% for 90 CRI.

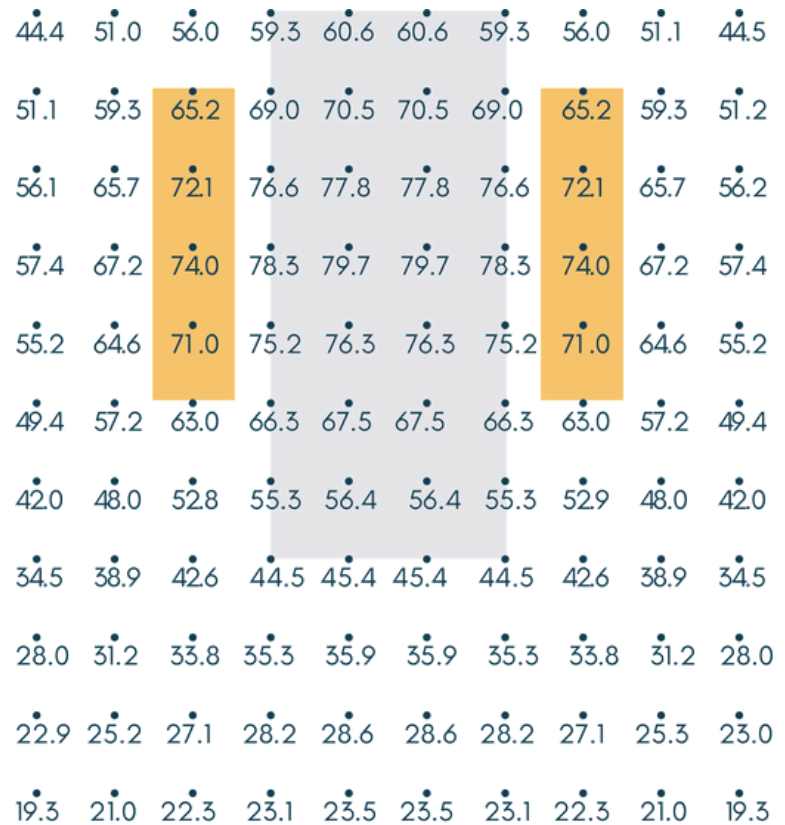
Reading - Low (1250lm)



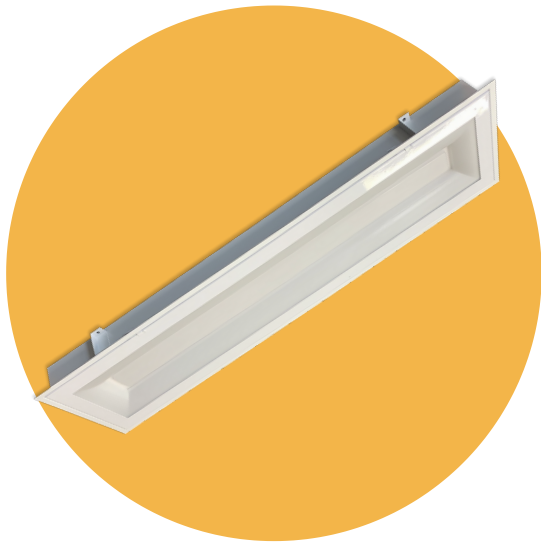
Ambient - Low (5700lm)



Exam - Low (10800lm)



1x4 Standalone SPDH Multi-Function Illuminance (Fc)



Patient Room Specs:

15' wide x 12' long Room

9' Ceiling. 3' Workplane

3' x 7' Bed Spaced 1' from Wall

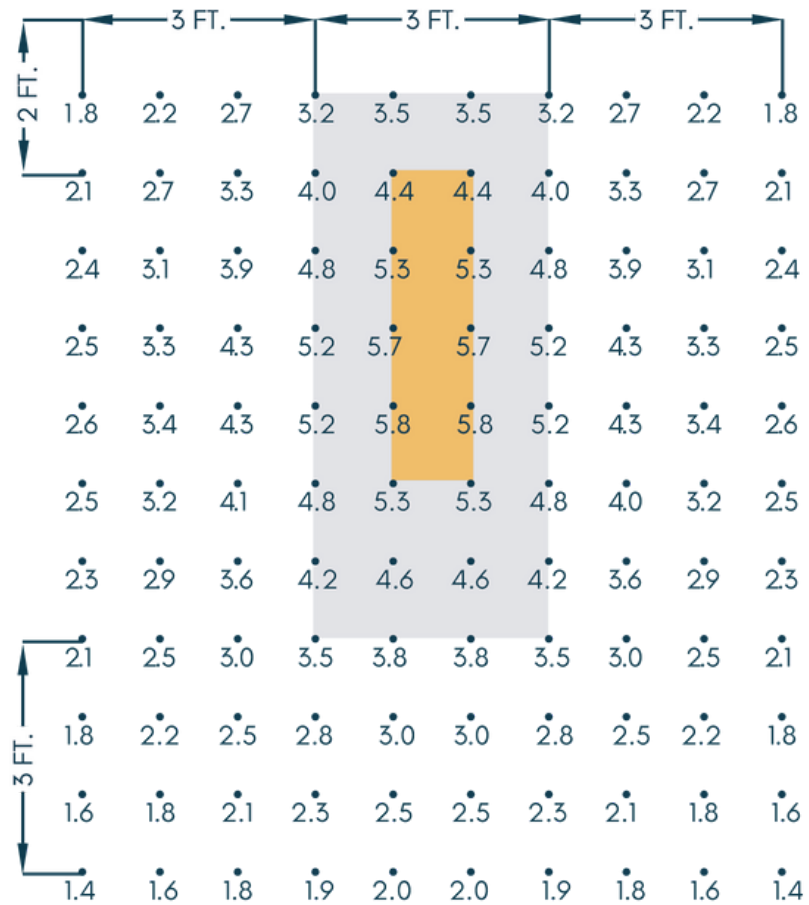
Fixture Spaced 2' from Wall

Reflectance 80 ceiling/50 wall/20 floor

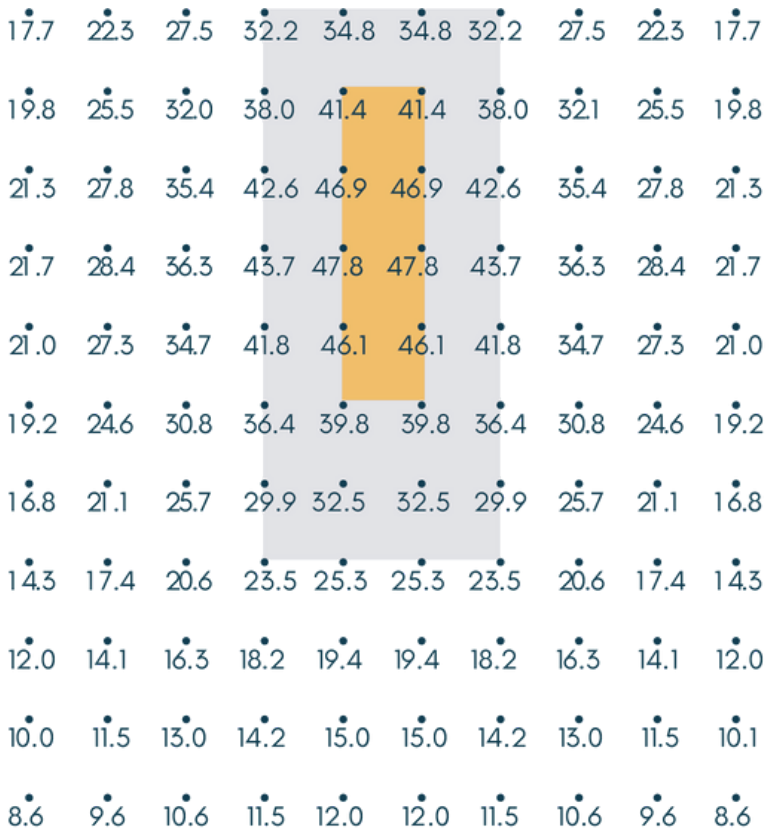
Performance data is based off 80 CRI at 4000°K. Discount 10-15% for 90 CRI.

*Consult factory for additional reading light levels

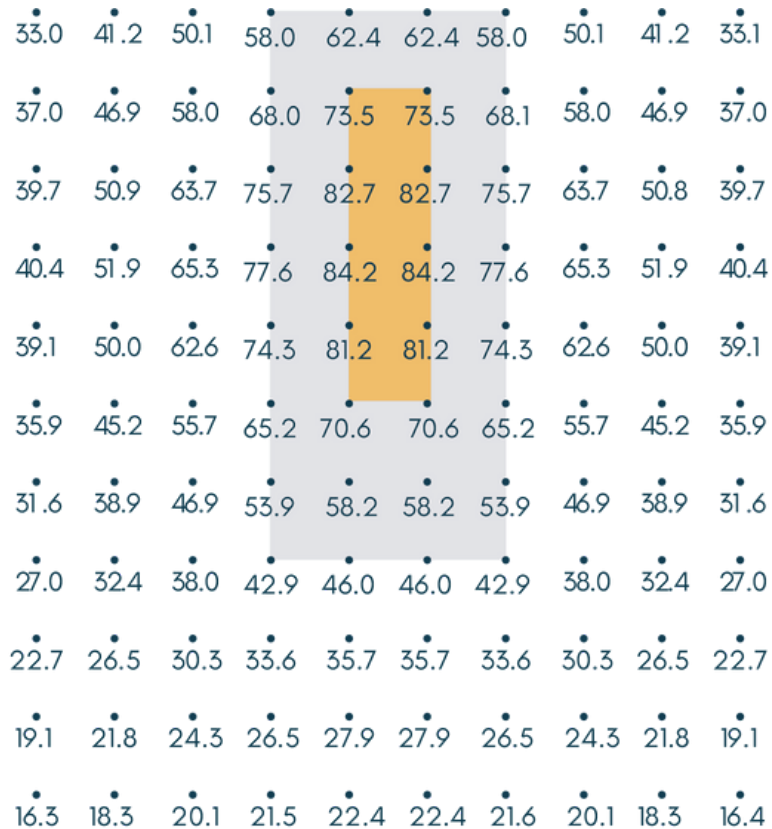
Reading - High (600lm)



Ambient - High (4750lm)



Exam - High (9000lm)



2x2 SPDH Multi-Function Illuminance (Fc)



Patient Room Specs:

15' wide x 12' long Room

9' Ceiling. 3' Workplane

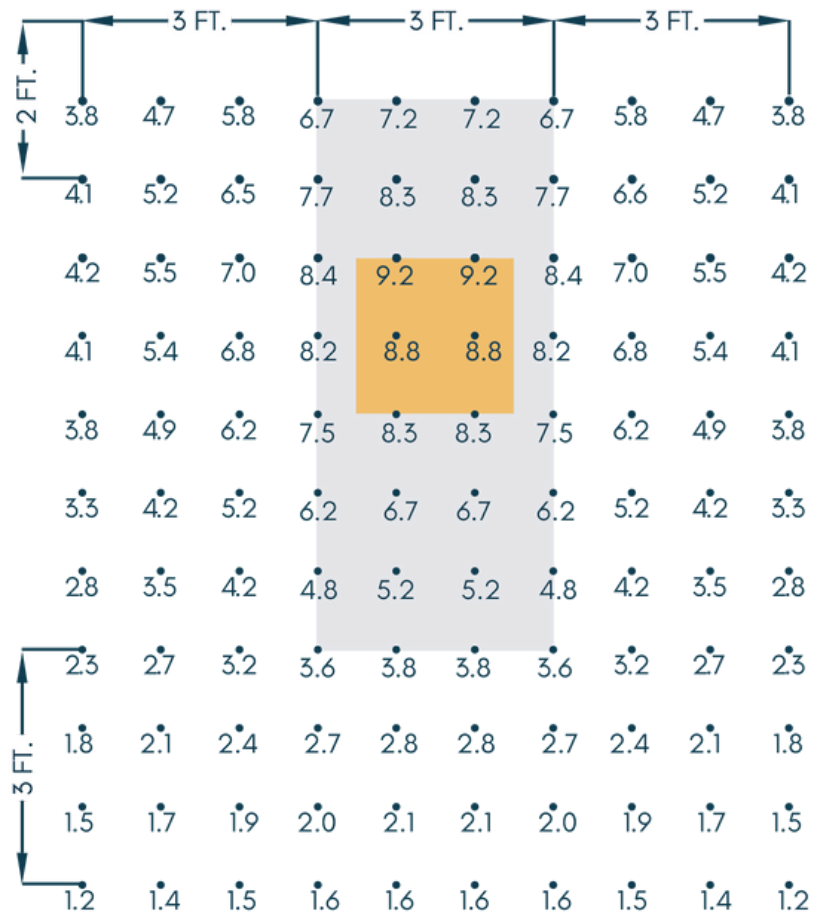
3' x 7' Bed Spaced 1' from Wall

Fixture Spaced 3' from Wall

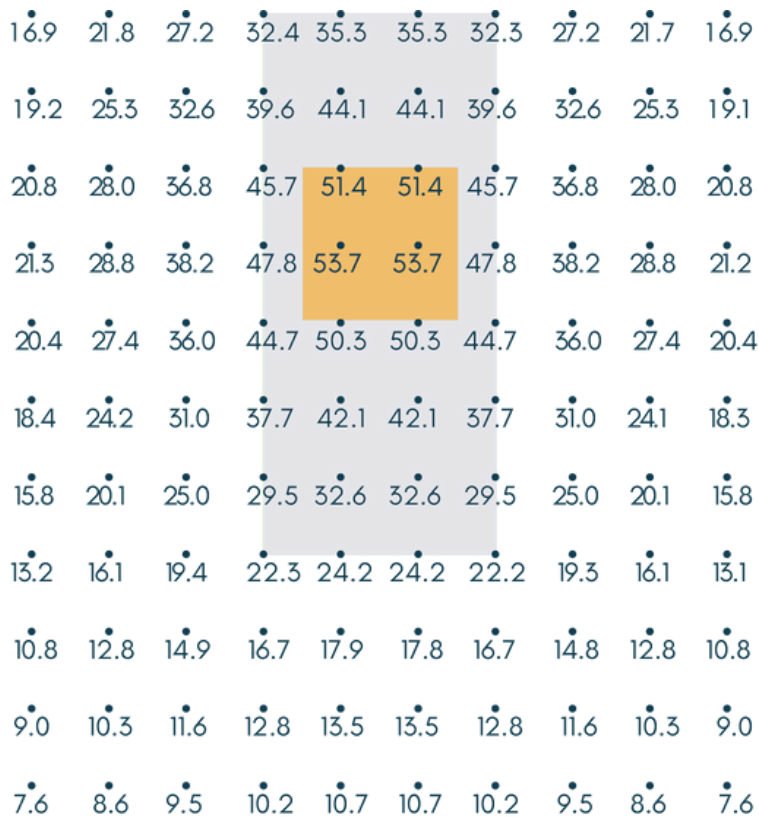
Reflectance 80 ceiling/50 wall/20 floor

Performance data is based off 80 CRI at 4000°K. Discount 10-15% for 90 CRI.

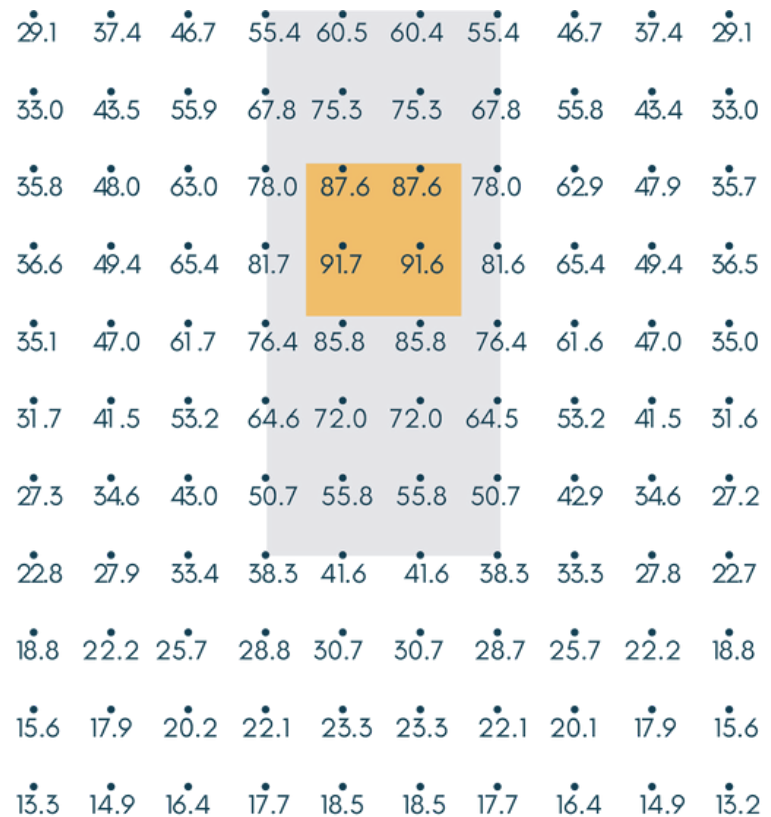
Reading - Low (900lm)



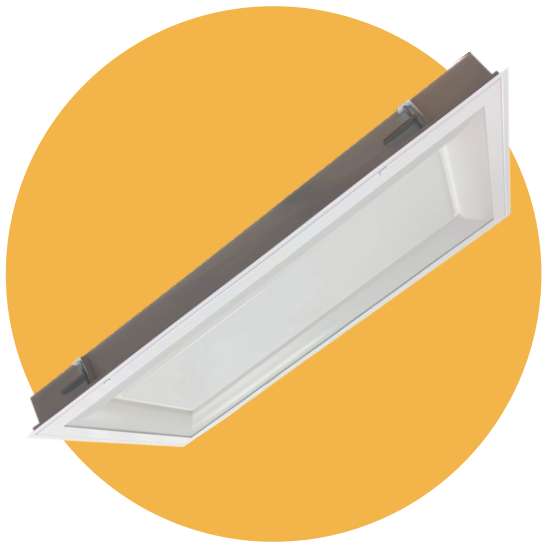
Ambient - Low (4400lm)



Exam - Low (8000lm)



2x4 SPDH Multi-Function Illuminance (Fc)



Patient Room Specs:

15' wide x 12' long Room

9' Ceiling. 3' Workplane

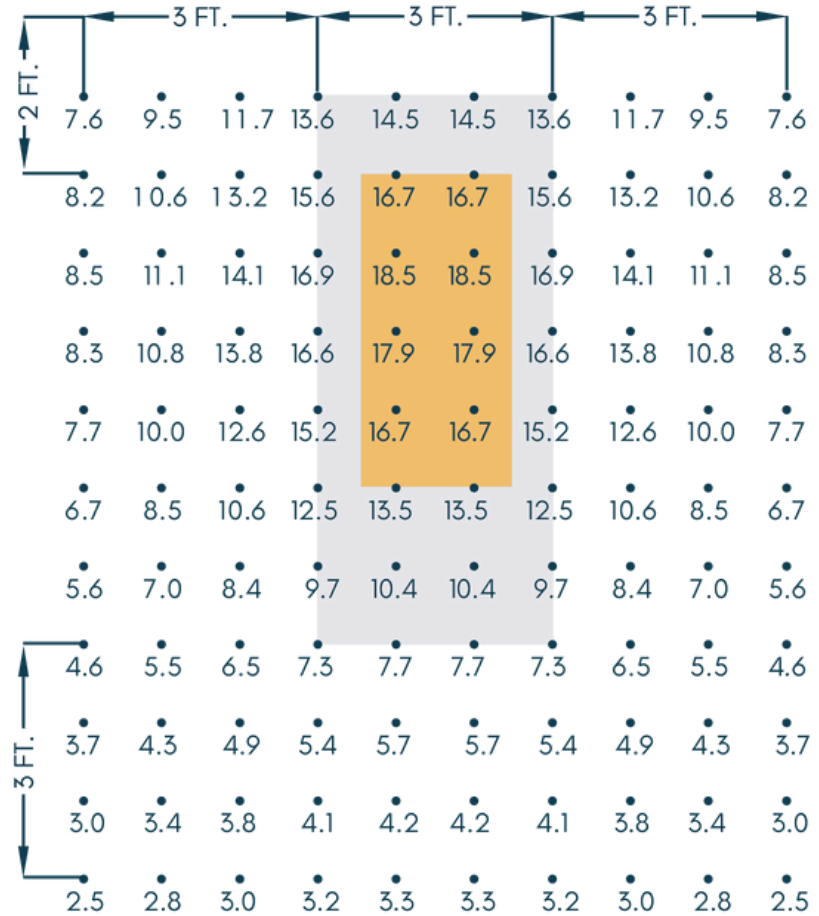
3' x 7' Bed Spaced 1' from Wall

Fixture Spaced 2' from Wall

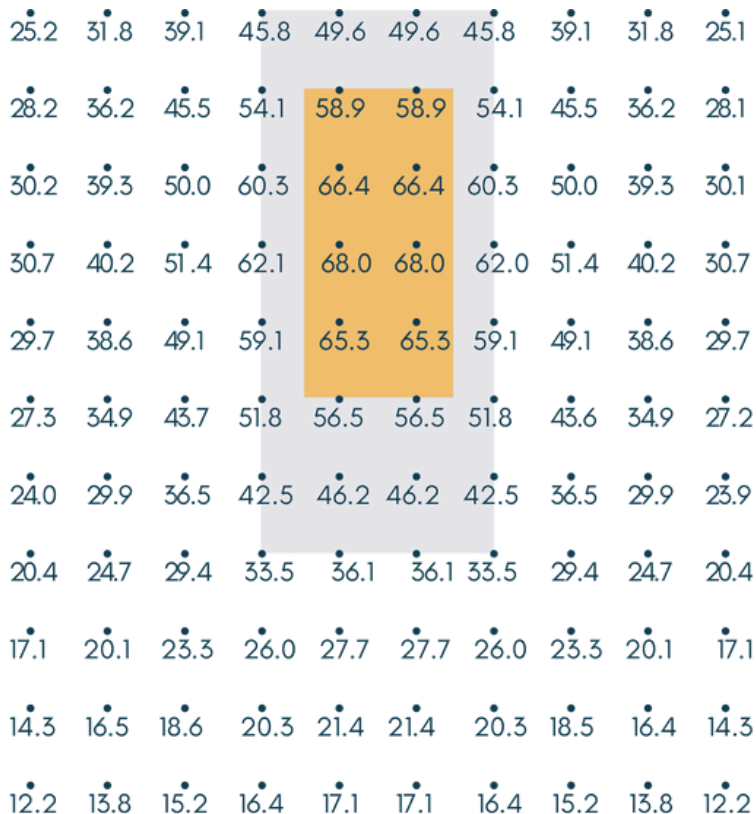
Reflectance 80 ceiling/50 wall/20 floor

Performance data is based off 80 CRI at 4000°K. Discount 10-15% for 90 CRI.

Reading - Low (1875lm)



Ambient - Low (6900lm)



Exam - Low (12000lm)

