

51C SERIES LED

51CA4

SPECIFICATION FEATURES

HOUSING: Die formed 16Ga. cold rolled steel wth multiple bends for maximum strength and rigidity.

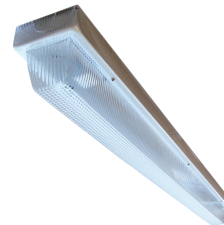
LENS: .125" pressure molded high impact U.V. stablized clear prismatic polycarbonate lens.

LED: Available in three color temperatures 3500°K, 4000°K, and 5000°K with maximum 3-step MacAdam variation allowance. Other color temperatures available, consult factory. Minimum 80 CRI standard. 0-10V dimming available with 10-100% range and 1-100% range. Must specify dimming under options.

FASTENERS: Tamper resistant Torx head screws with center pin reject.

FINISH: White powder coat finish following multistage iron phosphate pre-treatment.

GASKET: Rubber gasket to prevent water infiltration.



APPLICATIONS: High Abuse, Transportation Terminals, Public Areas, Public Housing, Warehouses, Detention Centers, School Campuses, and more.

MOUNTING: Surface installation. Hardware by others.

LABEL: Fixture is certified to UL standards.



ORDERING INFORMATION

Example: 51CA4-L2351C-UN

SERIES	LUMEN OUTPUT*	COLOR TEMP.	CIRCUITS	VOLTAGE	OPTIONS
51CA4					
	L1 = Standard	35 = 3500°K	1C = 1 Circuit	12 = 120V	DM = 0-10V dimming with 10-100% range
	L2 = High	40 = 4000°K	2C = 2 Circuits	27 = 277V	DM1 = 0-10V dimming with 1-100% range
		50 = 5000°K		34 = 347V	FZ1 = Fuse (120V)
	* Subject to change. Data on Page 2			UN = Universal (120V-277V)	FZ2 = Fuse (277V)
					EL1 = Emerg. Bat. LED Low (1100-1250 lm)*
					EL2 = Emerg. Bat. LED High (1900-2000 lm)*
					AH = Allenhead Screws with Center Pin Reject
					WL = Wet Location (Covered Ceilings Only)
					SS = Stainless Steel Housing (Brushed)

*Consult factory for the CA Title 24 options. If stored, batteries should be fully recharged every six months and kept between 0°C-25°C to maintain optimal battery capacity.

PERFORMANCE DATA*

MODEL	OUTPUT	COLOR TEMP.	LUMENS DELIVERED	EFFICACY (lm/W)	INPUT POWER (W)
51CA4	Standard (L1)	4000°K	2750	110	25
	High (L2)	4000°K	5500	110	50

*LEDs are frequently updated therefore values may change without notice. Visit www.newstarlighting.com for additional information and IES files.

51C SERIES LED

51CA4



DIMENSIONAL DATA

Fixture weight varies and is dependent upon chosen specifications.
Average weight of the 51CA4 is 13lbs. Consult factory for additional information.

