

## 51H SERIES FLUORESCENT

51HA2/51HA3/51HA4/51HA8

### SPECIFICATION FEATURES

**HOUSING:** 16Ga. cold rolled steel internally reinforced to provide double wall thickness at ends and corners.

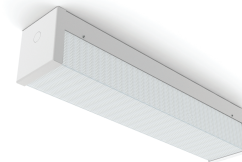
**LENS:** .125" impact resistant clear prismatic UV stabilized polycarbonate diffuser

**REFLECTOR:** Cold rolled steel, removable and unitized with all electrical components for easy installation and maintenance.

**ELECTRONICS:** Electronic Ballast <10% THD standard. Lamps by others.

**FASTENERS:** Six tamper resistant Torx head screws with center pin reject.

**FINISH:** White powder coat finish following multistage iron phosphate pre-treatment.



51HA2

**APPLICATIONS:** High Abuse Areas, Apartment Buildings, School Campuses, Public Housing Complexes, Transportation Terminals, Hotels, Freezer Units, Stairwells, Locker Rooms, Detention Centers, Hospitals, and more.

**MOUNTING:** Tandem or Pendant style mount available. Hardware and stem by others.

**LABEL:** Fixture is certified to UL standards.



### ORDERING INFORMATION

Example: 51HA3-2321C-D-UN

SERIES	SIZE	# OF LAMPS	LAMP TYPE	CIRCUITS	LENS	VOLTAGE	OPTIONS
51HA							
	2 = 2ft	51HA2-51HA4:	51HA2:	1C = 1 Circuit	B = .125 Prismatic Poly.	12 = 120V	DB = Dimming Ballast (0-10V)*
	3 = 3ft	1 = 1 Lamp	17 = Linear 17W T8	2C = 2 Circuits	C = .156 Prismatic Poly.	27 = 277V	E1 = Emerg. Ballast (450lm)**
	4 = 4ft	2 = 2 Lamps	14 = Linear 14W T5		D = .187 Prismatic Poly.	34 = 347V*	E2 = Emerg. Ballast (1350lm)**
	8 = 8ft	51HA8:	24 = 24W T5 HO			UN = Universal	FZ1 = Fuse (120V)
		4 = 4 Lamps	51HA3-51HA8:			(120V-277V)	FZ2 = Fuse (277V)
		(2 Rw in tandem)	32 = Linear 32W T8				NL = Fluorescent Night Light
			28 = Linear 28W T5				PR = Program Rapid Start
			54 = Linear 54W T5 HO				SD2 = Step Dim. Module (50-100%)*
							SD3 = Step Dim. Module (25-50-100%)*
							AH = Allenhead Screws with Center Pin
							WL = Wet Location (Covered Ceiling Only)
							CW = Cold Weather Ballast (-30°C) T8 Lamp Only
							SS = Stainless Steel Brushed Housing
							TH = Torx Head Screws with Center Pin
							TM = Tandem Mount
							PM = Pendant Style Mount

\* Cannot use with UN voltage.

\*\* Cannot use with UN voltage. Consult factory for T5 availability.

\*\*\*Consult factory for 277V availability

# 51H SERIES FLUORESCENT

## 51HA2/51HA3/51HA4/51HA8



### DIMENSIONAL DATA

Fixture weight varies and is dependent upon chosen specifications. Consult factory for additional information.

Average weight of the 51HA2 is 7lbs. Average weight of the 51HA3 is 10lbs. Average weight of the 51HA4 is 14lbs. Average weight of the 51HA8 is 28lbs.

