

AURAMED SERIES LED

AAS12/AAS14/AAS22/AAS24/AAF12/AAF14/AAF22/AAF24/AAG12/AAG14/AAG22/AAG24

SPECIFICATION FEATURES

HOUSING: 20 gauge formed cold rolled steel housing with continuous seam welds. Aluminum and stainless steel options available.

FRAME: Inset and overlapping doorframe available in aluminum, cold rolled steel, and stainless steel. Inset extruded door available in anodized aluminum or white painted aluminum. Frame held to housing via aircraft cable.

LENS: White perforated metal center diffused, lined with .20" white acrylic lens. Outer lens available in clear acrylic or polycarbonate.

LED: Available in three color temperatures 3500°K, 4000°K, and 5000°K with maximum 3-step MacAdam variation allowance. Other color temperatures available, consult factory. Minimum 80 CRI standard. 0-10V dimming available with 10-100% range and 1-100% range. Must specify dimming under options.

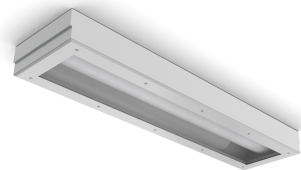
FASTENERS: Philips flat head screws with captive cage nuts.

FINISH: Matte white powder coat finish following multistage iron phosphate pre-treatment.

GASKET: Closed cell EPDM and closed cell silicone gaskets prevent air contaminations from entering the fixture.

ORDERING INFORMATION

Example: AAS12-HC/OC-L2351C-A-UN



AAG14

APPLICATIONS: Patient Rooms, Hospitals, Examination Rooms, Lobbies, Corridors, and more.

MOUNTING: Surface, Grid, and Flange installation options. Flange fixtures come with adjustable 90° swing arm for easy installation.

LABEL: Fixture is certified to UL standards for Damp Locations. IP65 rating. Meets ISO 4/Class 10 Cleanrooms, and NSF2 Splash/Non-Food Zone.



SERIES	MOUNTING	SIZE*	HOUSING	FRAME	LUMEN OUTPUT*
AA					
	S = Surface	12 = 1x2	HC = 20Ga. CRS Painted	INSET (I) or OVERLAP (O)	L2 = Low
	G = Grid	14 = 1x4	HS = 20Ga. SS Brushed	OC = 18Ga. CRS Painted	L3 = High
	F = Flange	22 = 2x2	HP = 20Ga. SS Painted	OS = 18Ga. SS Brushed	
		24 = 2x4	HA = 16Ga. Alum. Painted	OP = 18Ga. SS Painted	

*Nominal Size.
Dimensional Data on
Page 4.

*Subject to change.
Performance Data on
page 3.

IE = Extruded Alum*
IP = Extruded Alum Painted*
IC = 20Ga. CRS Painted
IA = 16Ga. Alum Painted
IB = 20Ga. SS Brushed
IS = 20Ga. SS Painted

*Not IP65. N/A with .187 Pris Poly lens.

COLOR TEMP.	CIRCUITS	OUTER FRAME LENS	VOLTAGE	OPTIONS
35 = 3500°K	1C = 1 Circuit	A = .125 Clear Acrylic	12 = 120V	DM = 0-10V dimming with 10-100% range
40 = 4000°K	2C = 2 Circuits*	B = .125 Clear Poly.	27 = 277V	DM1 = 0-10V dimming with 1-100% range
50 = 5000°K		C = .156 Clear Acrylic	34 = 347V	FZ1 = Fuse (120V)
	*Allows for Inboard/ Outboard control.	D = .156 Clear Poly.	UN = Universal	FZ2 = Fuse (277V)
		E = .187 Clear Acrylic*	(120V-277V)	EL1 = Emerg. Bat. LED Low (10W)*
		F = .187 Clear Poly.*		EL2 = Emerg. Bat. LED High (20W)*

*Cannot be used with IE or IP.

*1x2 Remote Battery. Consult factory for CA Title 24 options.
**3500°K. Non-dimming. Integrated switch allows light levels at 100%, 70%, 40% and 10% levels.
***Joiner bracket supplied. Fixture dimensions subject to change. Consult factory for custom wiring or knockouts.
****Consult factory for 347V.

PERFORMANCE DATA*

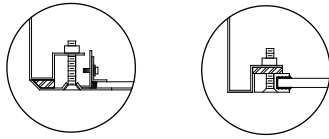
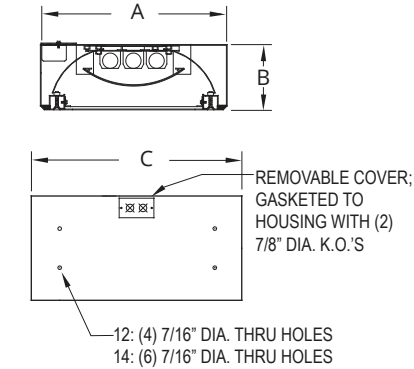
MODEL	OUTPUT	COLOR TEMP.	LUMENS DELIVERED	EFFICACY (lm/W)	INPUT POWER (W)
AA12	L2 = Low	3500°K	800	32	25
		4000°K	1000	40	25
		5000°K	1200	48	25
	L3 = High	3500°K	1200	32	38
		4000°K	1500	39	38
		5000°K	1800	47	38
AA14	L2 = Low	3500°K	1600	32	50
		4000°K	2000	40	50
		5000°K	2400	48	50
	L3 = High	3500°K	2400	32	75
		4000°K	3000	40	75
		5000°K	3600	48	75
AA22	L2 = Low	3500°K	1100	44	25
		4000°K	1300	52	25
		5000°K	1500	60	25
	L3 = High	3500°K	1650	43	38
		4000°K	1850	49	38
		5000°K	2050	54	38
AA24	L2 = Low	3500°K	2300	46	50
		4000°K	2700	54	50
		5000°K	3100	62	50
	L3 = High	3500°K	3400	45	75
		4000°K	4000	53	75
		5000°K	4600	61	75

LEDs are frequently updated therefore values may change without notice.
 Visit www.newstarlighting.com for additional information and IES files.

Notes:
 This product is Made in America and complies with the Buy American Act requirements. Specifications and dimensions are subject to change without notice. For additional options and dimensional details please consult your New Star Lighting Representative.

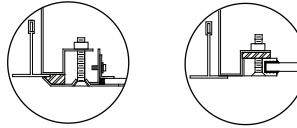
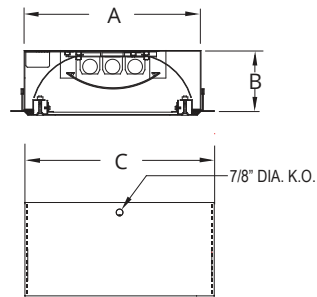
DIMENSIONAL DATA

SURFACE MOUNTING



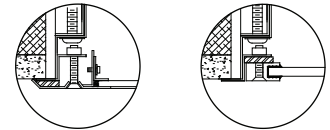
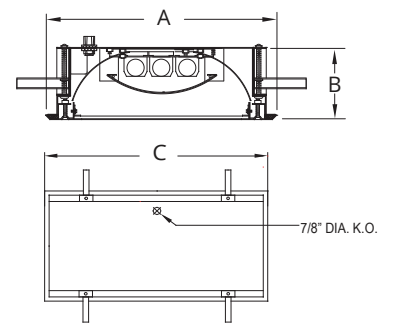
**OVERLAPPING ALUMINUM EXTRUDED
FRAME INSET FRAME**

GRID MOUNTING



**OVERLAPPING ALUMINUM EXTRUDED
FRAME INSET FRAME**

FLANGE MOUNTING



**OVERLAPPING ALUMINUM EXTRUDED
FRAME INSET FRAME**

	A	B	C	REC. CEILING CUT OUT
AAS12	12.00"	3.94"	24.07"	-
AAS14	12.00"	3.94"	48.07"	-
AAS22	24.00"	3.94"	24.07"	-
AAS24	24.00"	3.94"	48.07"	-
AAG12	11.69"	3.94"	24.20"	-
AAG14	11.69"	3.94"	48.07"	-
AAG22	23.69"	3.94"	24.20"	-
AAG24	23.69"	3.94"	48.07"	-
AAF12	13.13"	3.94"	25.25"	24 3/8" x 12 3/8"
AAF14	13.13"	3.94"	49.13"	48 3/8" x 12 3/8"
AAF22	25.13"	3.94"	25.25"	24 3/8" x 24 3/8"
AAF24	25.13"	3.94"	49.13"	48 3/8" x 24 3/8"