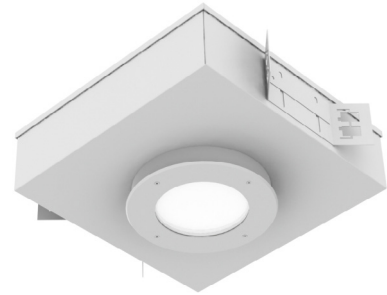


HIGH ABUSE STARMED DOWNLIGHT SERIES

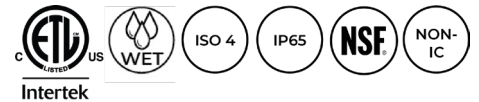
DLM6

FEATURES:

- Intended for High Abuse Settings, Ligature resistant for Behavioral Health Settings or areas where ligature is a concern, Healthcare Applications, Correctional Settings, and more
- Designed to reduce the risk of patient self-harm and for areas needing to reduce ligature risk
- Enclosed cold rolled steel housing with extruded aluminum heat sink
- Suitable for Wet Location installations, through branch wiring, IP65 rating, meets ISO 4/Class 10 Cleanrooms, and NSF2 Splash/Non-Food Zone
- Variety of wattages and lumen packages
- This product was Made in America and complies with the Buy American Act requirements



DLM6



RELATED PRODUCTS:

- [StarMed Downlights \(DLM6\) Quick Ship Ordering Options](#)
- [StarMed Downlights MRI \(DLM6\)](#)

SPECIFICATIONS

CONSTRUCTION: Sealed housing 16-gauge cold rolled steel with an extruded aluminum heat sink designed for maximum thermal dissipation.

LENS: Prismatic acrylic or white frosted polycarbonate inner lens to diffuse LED module with a clear outer lens.

LED: LED module available in three color temperatures 3000°K, 3500°K, and 4000°K with maximum 3-step MacAdam variation allowance. Other color temperatures available, consult factory. Minimum 80 CRI standard with optional minimum 90 CRI available.

ELECTRICAL: 0-10V dimming available with 10-100% range and 1-100% range. Must specify dimming under options. Rated for through-branch wiring.

FASTENERS: Tamper resistant Torx Head screws. Finish to match trim.

FINISH: White antimicrobial powder coat finish following multistage iron phosphate pretreatment on all exposed room-side painting surfaces, unless otherwise specified.

GASKET: Closed cell EPDM and closed cell silicone gaskets prevent air contaminations from entering the fixture.

INSTALLATION: Recessed drywall installation.

WARRANTY: Limited five (5) year warranty.

LABEL: Fixture is certified to UL standards by Intertek Testing Laboratory for non-IC and Wet Location installations (under covered ceiling). Suitable for through branch wiring. IP65 rating. Meets ISO 4/Class 10 Cleanrooms. NSF2 Splash/Non-Food Zone.

HIGH ABUSE STARMED DOWNLIGHT SERIES

DLM6

ORDERING INFORMATION

EXAMPLE: DLM6-C-L640-C/A-TC16-3-UN-TH

| SERIES | APERTURE | HOUSING | LUMEN OUTPUT* | COLOR TEMP. | OUTER LENS |
|--------|------------|-----------------------|--|---|--|
| DLM | 6 | C | | | |
| | 6 = 6 inch | C = 16Ga. CRS Painted | L1 = 11W 82 CRI L2 = 29W 82 CRI L2C = 29W 90 CRI L3 = 13W 82 CRI L4 = 25W 82 CRI L5 = 37W 82 CRI L6 = 45W 82 CRI L6C = 34W 90 CRI L6A = 54W 82 CRI L7 = 52W 82 CR | 30 = 3000°K 35 = 3500°K 40 = 4000°K | D = .250 Clear Polycarbonate E = .375 Clear Polycarbonate |

*Subject to change.
 Performance Data on page 3.

| INNER LENS | TRIM | REFLECTOR | VOLTAGE | OPTIONS |
|--|--------------------------|-----------------------------|--|---|
| | TC16 | 3 | | TH - |
| A = .125 Prismatic Acrylic B = .125 Prismatic Poly. C = .156 Prismatic Poly. D = .125 White Frosted Poly. E = .156 Prismatic Temp. Glass | TC16 = 16Ga. CRS Painted | 3 = Antimic Low Gloss White | 12 = 120V 27 = 277V UN = Universal (120V-277V) | FZ1 = Fuse (120V) FZ2 = Fuse (277V) EM = Emerg. Batt (remote)* TH = Torx Head screws (with center pin)** DM = 0-10V dimming with 10-100% range DM1 = 0-10V dimming with 1-100% range |

*If stored, batteries should be fully recharged every six months and kept between 0°C-25°C to maintain optimal battery capacity.
 **TH are not NSF-rated.

HIGH ABUSE STARMED DOWNLIGHT

DLM6



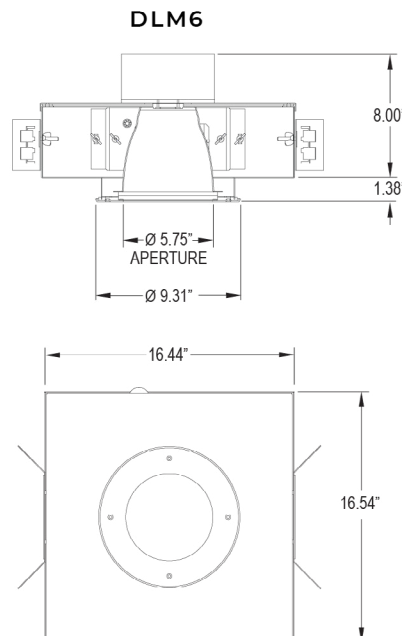
PERFORMANCE DATA*

*LEDs are frequently updated therefore values may change without notice.

| DLM (82 CRI) | 4000°K | LC3 | Clear Acrylic | Wattage |
|--------------|--------|------|---------------|---------|
| | L1 | 744 | 905 | 11 |
| | L2 | 1332 | 1621 | 29 |
| | L3 | 636 | 774 | 13 |
| | L4 | 1284 | 1536 | 25 |
| | L5 | 1934 | 2354 | 37 |
| | L6 | 1980 | 2409 | 45 |
| | L6A | 2670 | 3249 | 54 |
| | L7 | 3270 | 3979 | 52 |
| DLM (82 CRI) | 3000°K | LC3 | Clear Acrylic | Wattage |
| | L1 | 696 | 847 | 11 |
| | L2 | 1266 | 1540 | 29 |
| | L3 | 636 | 774 | 13 |
| | L4 | 1284 | 1562 | 25 |
| | L5 | 1936 | 2354 | 37 |
| | L6 | 1896 | 2307 | 45 |
| | L6A | 2670 | 3249 | 54 |
| | L7 | 3000 | 3650 | 52 |
| DLM (90 CRI) | 3000°K | LC3 | Clear Acrylic | Wattage |
| | L2 | 1200 | 1460 | 29 |
| | L6C | 1800 | 2190 | 34 |
| | L7C | 3000 | 3450 | 52 |

DIMENSIONAL DATA

Fixture weight varies and is dependent upon chosen specifications. Consult factory for additional information.



This product was Made in America and complies with the Buy American Act requirements. Specifications and dimensions are subject to change without notice. For additional options and dimensional details, please consult your New Star Lighting representative.