



2225 W. Pershing Road, Chicago, IL 60609  
www.newstarlighting.com  
773.847.1400



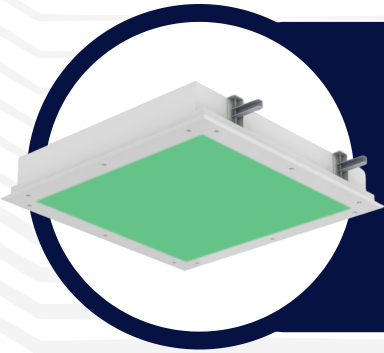
# Illuminating Health and Wellness

Support a healing and nurturing environment with New Star Lighting's complete range of healthcare solutions. Our premier luminaires provide proper illumination levels, architectural designs, accurate color rendering, and durable construction built to endure vigorous cleaning processes.

## **APPLICATIONS:**

- Surgical Suites
- Patient Rooms
- Examination Rooms
- Skilled Nursing Facilities
- Behavioral Health
- Hospice
- Operating Rooms
- Common Areas
- MRI/Imaging Suites
- Corridors
- Nursing Stations
- Pharmacies

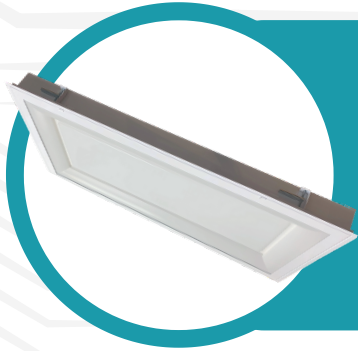
## SURGICAL SUITE



### Green StarSurgical Series

- Available with White and Green LEDs or Green LEDs only
- Certified IP65, ISO3, and NSF rated
- Universal recessed housing for grid and flange installations
- Lumen output up to 9800lm (Green). Up to 18750lm (White).

## PATIENT ROOM



### Lumanique Multi-Function Series

- Provides Ambient, Exam, Reading, and Night Light functions
- Dimensional lens creates an architectural statement
- Internal chambers separate functions preventing light leaks
- Lumen output up to 21500lm

## BEHAVIORAL HEALTH



### AuraMed High Abuse

- Cold rolled steel or stainless steel housing for durability
- Fastened with tamper resistant Torx Head screws
- Optional remote emergency battery, dimming, and step dimming
- Lumen output up to 12200lm

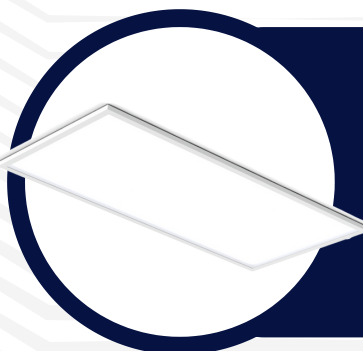
## MRI SUITE



### StarMed Downlight

- 6" aperture reduces glare
- Sealed and enclosed non-ferrous aluminum housing
- Remote power supply with optional dimming capabilities
- Lumen output up to 2210lm

## NURSING STATION



### StarTile Series

- Surface, grid, and flange installations
- Pair with Image overlay to create a unique mural
- Optional angled recessed frame for a non-clinical aesthetic
- Lumen output up to 7900lm