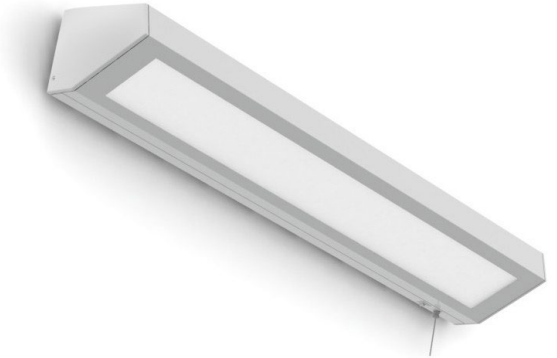


## STARMED HEADWALL MHS SERIES

MHS2/MHS4

### FEATURES:

- Intended for Healthcare Settings, Alternative Care Facilities, Patient Rooms, Skilled Nursing, Hospitals, and more
- Headwall patient room fixture provides up/down lighting for ambient and reading functions
- Available in 2ft or 4ft
- Aluminum construction with welded endcaps
- Standard antimicrobial finish
- This product was Made in America and complies with the Buy American Act requirements



MHS4

### RELATED PRODUCTS:

- [StarMed Headwall \(MHS\) Quick Ship Ordering Information](#)
- [StarMed Dos+1 \(SMDOS\)](#)
- [ComPro Series \(CPP\)](#)



### SPECIFICATIONS

**CONSTRUCTION:** 16 gauge formed aluminum housing seamed welded and ground smooth. Welded endcaps standard.

**LENS:** Prismatic acrylic or white frosted polycarbonate for maximum diffusion.

**LED:** Available in three color temperatures 3500°K, 4000°K and 5000°K with maximum 3-step MacAdam variation allowance. Other color temperatures available, consult factory. Minimum 80 CRI standard with optional minimum 90 CRI available.

**ELECTRICAL:** 0-10V dimming available with 10-100% range and 1-100% range for Up and Down compartment. Must specify dimming under options. Optional Curbell Low Voltage Controller provides control of lighting from a pillow speaker, bed side rail or wall switch. Up and Down compartments will be on one controller, but controlled separately. LV2 has on/off capability only. Must specify voltage for LV2. LV3 has dimming capabilities. Controls and additional accessories by others.

**FASTENERS:** Stainless steel Philips flat head screws with captive cage nuts. Finish to match housing.

**FINISH:** Matte white antimicrobial powder coat finish following multistage iron phosphate pretreatment on all room-side exposed surfaces.

**GASKET:** Closed cell neoprene to prevent air contaminants from getting into the fixture.

**INSTALLATION:** Surface wall mount installation. Hardware by others.

**WARRANTY:** Limited five (5) year warranty.

**LABEL:** Fixture is certified to UL standards by Intertek Testing Laboratories for Damp Location.

## STARMED HEADWALL MHS SERIES

MHS2/MHS4

### ORDERING INFORMATION

EXAMPLE: MHS2-HA-WE-LB352C-A-UN

SERIES	SIZE*	HOUSING	ENDCAPS	LUMEN OUTPUT*	COLOR TEMP.
MHS		HA			
	2 = 2ft	HA = 16Ga. Alum. Painted	WE = Welded Flat Endcaps	LA = 1 Up/1Down	35 = 3500°K
	4 = 4ft			LB = 1 Up/2 Down	40 = 4000°K
				LC = 2 Up/2 Down	50 = 5000°K
				LD = 2 Up/ 1 Down	
				LF = 3 Up/3 Down**	
				LG = 1 Up/3 Down**	
				LH = 3 Up/2 Down**	

\*Nominal Size.  
 Dimensional Data on  
 Page 3.

\*Subject to change. Data on  
 page 3.  
 \*\*N/A with MHS2.

CIRCUITS	LENS	VOLTAGE	OPTIONS
----------	------	---------	---------

1C = 1 Circuit	A = .125 Prismatic Acrylic	12 = 120V	DM = 0-10V dimming with 10-100% range
2C = 2 Circuits*	LC3 = .125 White Frosted Poly.	27 = 277V	DM1 = 0-10V dimming with 1-100% range
		34 = 347V	FZ1 = Fuse (120V)
		UN = Universal	FZ2 = Fuse (277V)
		(120V-277V)	SD2 = Step Dim. Module (50-100%)*

\*Recommended.  
 Select 2C for Up/  
 Down compartments  
 to be independently  
 circuited/controlled.

SD3 = Step Dim. Module (30-70-100%)\*  
 EL1 = Emerg. Bat. LED Low (10W)\*\*  
 EL2 = Emerg. Bat. LED High (20W)\*\*  
 RF = (RIF) Radio Intereference Filter  
 TH = Torx Head screws (with center pin)  
 90C = 90 CRI  
 LV2 = On/Off Curbell Low Voltage Controller\*\*\*  
 LV3 = Dimming Curbell Low Voltage Controller\*\*\*  
 PW = Pull Chain Switch 4-postion (120V Only)\*\*\*\*  
 SPB = 6 ft SaniPull Vinyl Ribbon for Pull Switch (Blue)  
 SPR = 6 ft SaniPull Vinyl Ribbon for Pull Switch (Red)  
 LN = LED Night Light\*\*\*\*\*  
 RS = Rocker Switch

\*Consult factory for 347V.  
 \*\* Illuminates "Down" compartment with integral test switch.  
 \*\*\*Up compartment and down compartment will be on same LVC but controlled separately unless otherwise specified. LV2 is non-dimming with on/off function only. Must specify voltage. LV3 has dimming capabilities for both compartments. N/A with emergency battery. Controls/accessories by others.  
 \*\*\*\*Pull Chain is 1 circuit only. N/A with LV2/LV3.  
 \*\*\*\*\*3500°K non-dimming Night Light with integrated switch allows light levels at 100%, 70%,40% and 10%. Located in "Down" compartment.

# STARMED HEADWALL MHS SERIES

## MHS2/MHS4



### PERFORMANCE DATA\*

\*Data is with 80 CRI chip. LEDs are frequently updated therefore values may change without notice.

MODEL	OUTPUT	COLOR TEMP.	LUMENS DELIVERED	EFFICACY (lm/W)	INPUT POWER (W)
MHS2	LA = 1 Up/1Down	4000°K	2750	110	25W
	LB = 1 Up/2 Down	4000°K	4125	110	37.5W
	LC = 2 Up/2 Down	4000°K	5500	110	50W
	LD = 2 Up/ 1 Down	4000°K	4125	110	37.5
MHS4	LA = 1 Up/1Down	4000°K	5500	110	50W
	LB = 1 Up/2 Down	4000°K	8250	110	75W
	LC = 2 Up/2 Down	4000°K	11000	110	100W
	LD = 2 Up/ 1 Down	4000°K	8250	110	75W
	LF = 3 Up/3 Down	4000°K	16500	110	150W
	LG = 1 Up/3 Down	4000°K	11000	110	100W
	LH= 3 Up/2 Down	4000°K	13750	110	125W

This product was Made in America and complies with the Buy American Act requirements. Specifications and dimensions are subject to change without notice. For additional options and dimensional details, please consult your New Star Lighting representative.

# STARMED HEADWALL MHS SERIES

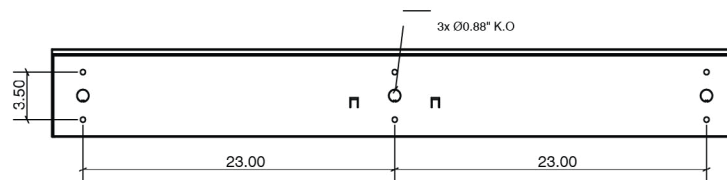
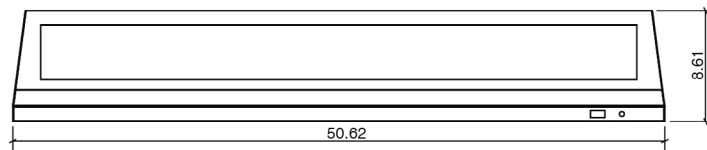
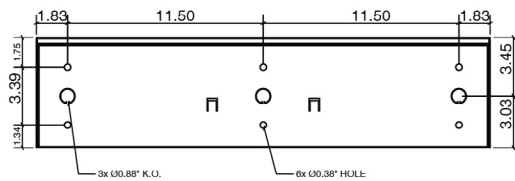
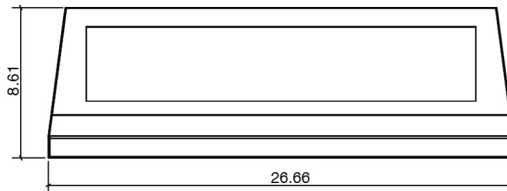
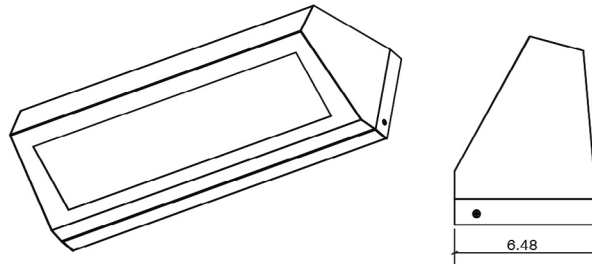
## MHS2/MHS4



### DIMENSIONAL DATA

Fixture weight varies and is dependent upon chosen specifications. Consult factory for additional information. Average weight of the MHS2 is 15lb. Average weight of the MHS4 is 20lb.

#### WITH WELDED ENDCAP (STANDARD)



This product was Made in America and complies with the Buy American Act requirements. Specifications and dimensions are subject to change without notice. For additional options and dimensional details, please consult your New Star Lighting representative.