

MRI STARSURGICAL SERIES: RECESSED (GRID/FLANGE)

SSR12/SSR14/SSR22/SSR24

FEATURES:

- Intended for MRI Suites, Hybrid Surgical Suites
- Surgical troffer available in a 1x2, 1x4, 2x2, 2x4
- Recessed ceiling mount; grid or flange
- This product was Made in America and complies with the Buy American Act (BAA) requirements



SSR24



SPECIFICATIONS

HOUSING: 16 gauge aluminum housing standard.

FRAME: Inset or overlapping doorframe available in aluminum. Frame held to housing via aircraft cable.

LENS: Available with symmetric or asymmetric acrylic lens with RFI Grid. Asymmetric lens serves as inner lens with a .080 white frosted acrylic outer lens for a smooth surface. Optional prismatic acrylic or polycarbonate installed with smooth side out and does not require additional outer lens. Inset and Overlapping frames use a rail hold down system. Must specify R or S lens for MIL-STD-461G.

LED: Available in three color temperatures 3500K, 4000K, and 5000K with maximum 3-step MacAdam variation allowance. Other color temperatures available, consult factory. Minimum 80 CRI standard with optional minimum 90 CRI available.

ELECTRICAL: 0-10V dimming available with 1-100% range. Must specify dimming under options.

FASTENERS: Stainless steel Philips flat head screws with captive cage nuts. Finish to match doorframe.

FINISH: White antimicrobial powder coat finish following multistage iron phosphate pretreatment.

GASKET: Closed cell EPDM and closed cell silicone gaskets prevent air contaminations from entering the fixture. Gasketing seals lens to doorframe and doorframe to housing. Optional triple gasketing, must specify Grid or Flange installation.

POWER ENCLOSURE: LED driver included - must be remote mount. Must order Power Enclosure separately. Consult factory for more information. MRI room EMI filter required, supplied by others.

INSTALLATION: Recessed mounting accommodates Grid and Flange installations. Recessed fixtures will be supplied with adjustable swing arms that can be used for Flange applications or taped to the side for Grid applications. Recessed install compatible with 1-1/2" and 15/16" Grid systems. Mounting for custom ceilings available, consult factory.

WARRANTY: Limited five (5) year warranty.

LABEL: Fixture is certified to UL standards. IP65 rating. Meets ISO 3/Class 1 Cleanrooms. NSF2 Splash/Non-Food Zone.

This product was Made in America and complies with the Buy American Act (BAA) requirements. Specifications and dimensions are subject to change without notice. For additional options and dimensional details, please consult your New Star Lighting representative.

MRI STARSURGICAL SERIES: RECESSED (GRID/FLANGE)

SSR12/SSR14/SSR22/SSR24

ORDERING INFORMATION

EXAMPLE: SSR14-HA/OA-L4401C-A-UN

SERIES	MOUNTING	SIZE	MRI	HOUSING	FRAME	LUMEN OUTPUT*
SS				HA		
	S = Surface R = Recessed (Grid/Flange)	12 = 1x2 14 = 1x4 22 = 2x2 24 = 2x4	MRI = Remote Driver. Remote Power Supply, ordered separately. Requires proper filter components supplied by others. Consult factory for additional information.	HA = 16Ga. Alum. Painted	INSET (I) or OVERLAP (O)* OA = 16Ga. Alum Painted IA = 16Ga. Alum Painted	12-14: L2 = Low L3 = Standard L4 = High 22-24: L2 = Low L4 = Standard L6 = Medium L8 = High
*Nominal Size. Dimensional Data on Page 3						

COLOR TEMP.	CIRCUITS	LENS	VOLTAGE	OPTIONS
35 = 3500K 40 = 4000K 50 = 5000K	1C = 1 Circuit 2C = 2 Circuits	A = .125 Prismatic Acrylic E = .125 White Frost Poly. R = .125 Symm. Pris. Acrylic with RFI Grid S = .125 Asymmetric Acrylic with RFI Grid and .080 White Frost Acrylic diffuser	12 = 120V 27 = 277V 34 = 347V UN = Universal (120V-277V)	90C = 90 CRI

*Subject to change. Data on
Pg 2.

POWER ENCLOSURE ORDERING INFORMATION

EXAMPLE: SS24-PS-XDL4-1C-DM1

SERIES	SIZE	PS	DRIVERS	LUMEN OUTPUT	CIRCUITS	OPTIONS
SS		PS				
	12 = 1x2 14 = 1x4 22 = 2x2 24 = 2x4	PS = Power Enclosure* *Up to 8 drivers can be in Power Enclosure depending on quantity of fixtures ordered. Consult factory for custom configurations. Configuration must be determined at time of order.	XD = (X) Drivers to power (1) fixture *Number of drivers to power fixture to be determined at time of order.	12-14: L2 = Low L3 = Standard L4 = High 22-24: L2 = Low L4 = Standard L6 = Medium	1C = 1 Circuit	DM1 = 0-10V dimming with 1-100% range MS = MIL-STD-461G (Must specify R or S lens)* RF1 = (RIF) Radio Interference Filter (120V) RF2 = (RIF) Radio Interference Filter (277V) *N/A with UN voltage, must specify voltage

MRI STARSURGICAL SERIES: RECESSED

SSR12/SSR14/SSR22/SSR24



PERFORMANCE DATA*

*Data is with 80 CRI chip. LEDs are frequently updated therefore values may change without notice.

MODEL	OUTPUT	COLOR TEMP.	LUMENS DELIVERED	EFFICACY (lm/W)	INPUT POWER (W)
SS12	L2 = Low	3500°K	2875	115	25
		4000°K	3000	120	25
		5000°K	3125	125	25
	L3 = Standard	3500°K	4180	110	38
		4000°K	4370	115	38
		5000°K	4560	120	38
	L4 = High	3500°K	5500	110	50
		4000°K	5750	115	50
		5000°K	6000	120	50
SS14	L2 = Low	3500°K	5750	115	50
		4000°K	6000	120	50
		5000°K	6250	125	50
	L3 = Standard	3500°K	8250	110	75
		4000°K	8625	115	75
		5000°K	9000	120	75
	L4 = High	3500°K	11000	110	100
		4000°K	11500	115	100
		5000°K	12000	120	100
SS22	L2 = Low	3500°K	3000	120	25
		4000°K	3125	125	25
		5000°K	3250	130	25
	L4 = Standard	3500°K	6000	120	50
		4000°K	6250	125	50
		5000°K	6500	130	50
	L6 = Medium	3500°K	8625	115	75
		4000°K	9000	120	75
		5000°K	9375	125	75
	L8 = High	3500°K	11500	115	100
		4000°K	12000	120	100
		5000°K	12500	125	100
SS24	L2 = Low	3500°K	6000	120	50
		4000°K	6250	125	50
		5000°K	6500	130	50
	L4 = Standard	3500°K	12000	120	100
		4000°K	12500	125	100
		5000°K	13000	130	100
	L6 = Medium	3500°K	17250	115	150
		4000°K	18000	120	150
		5000°K	18750	125	150
	L8 = High	3500°K	23000	115	200
		4000°K	24000	120	200
		5000°K	25000	125	200

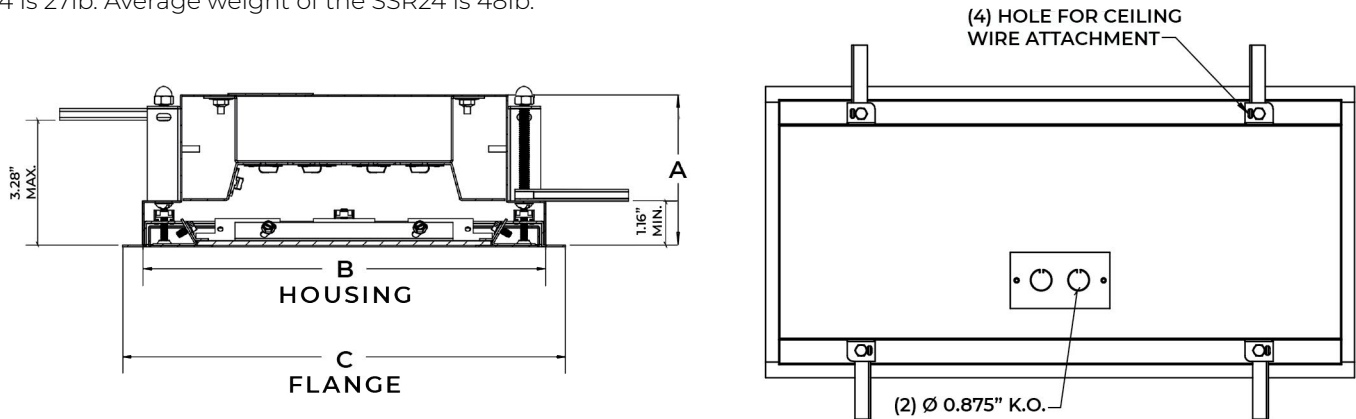
MRI STARSURGICALSERIES: RECESSED

SSR12/SSR14/SSR22/SSR24

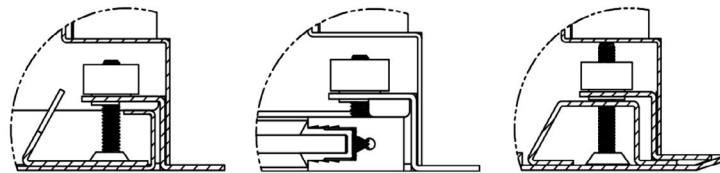


DIMENSIONAL DATA

Fixture weight varies and is dependent upon chosen specifications. Consult factory for additional information. Average weight of the SSR14 is 27lb. Average weight of the SSR24 is 48lb.



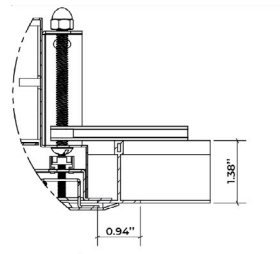
	A	B	C	REC. CEILING CUT-OUT
SSR12	4.00"	10.64" X 22.64"	11.69" X 23.69"	10.88" X 22.88"
SSR14	4.00"	10.64" X 46.64"	11.69" X 47.69"	10.88" X 46.88"
SSR22	4.00"	22.64" X 22.64"	23.69" X 23.69"	22.88" X 22.88"
SSR24	4.00"	22.64" X 46.64"	23.69" X 47.69"	22.88" X 46.88"



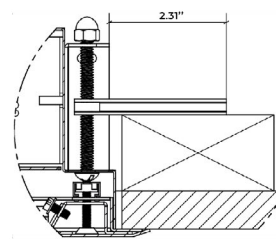
IC FRAME DETAIL

IE FRAME DETAIL

OC FRAME DETAIL



SSR (W/ OC FRAME) RECESSED GRID



SSR (W/ OC FRAME) RECESSED FLANGE

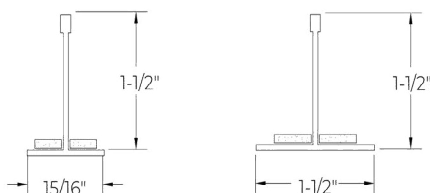
GRID COMPATIBILITY:

SSR12: Spaced at 12" x 24" Centers

SSR14: Spaced at 12" x 48" Centers

SSR22: Spaced at 24" x 24" Centers

SSR24: Spaced at 24" x 48" Centers



This product was Made in America and complies with the Buy American Act (BAA) requirements. Specifications and dimensions are subject to change without notice. For additional options and dimensional details, please consult your New Star Lighting representative.