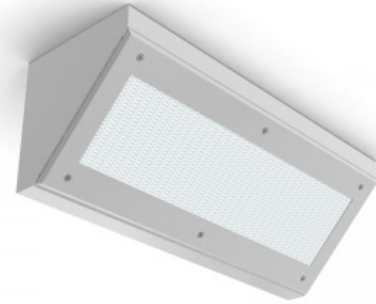


PROJECT: \_\_\_\_\_  
 TYPE: \_\_\_\_\_  
 PRODUCT: \_\_\_\_\_  
 APPROVED BY: \_\_\_\_\_

## PRODUCT FEATURES

- Intended for Cleanrooms, Hospitals, Hi-Tech Manufacturing, Laboratory, Food Processing Facilities, Commercial Kitchens, and more
- Corner surface mount available in 1x2, 1x4
- ISO Class 4 (Fed Std. 209E/Class 10), Certified IP65 per IEC60598, and NSF2 Splash Zone/Non-Food Zone listed
- This product was Made in America and complies with the Buy American Act requirements



SCC Series



## ORDERING INFORMATION

Example: SCC14-HC/OC-L240-1C-A-UN

SC	C				
<b>Series</b>	<b>Mounting</b> C = Corner Surface	<b>Size</b> 12 = 1x2 14 = 1x4  *Nominal Size. Dimensional Data on Page 2.	<b>Housing</b> HC = 20Ga. CRS Painted HS = 20Ga. SS Brushed HP = 20Ga. SS Painted HA = 16Ga. Alum. Painted	<b>Frame</b> INSET (I) or OVERLAP (O) OC = 18Ga. CRS Painted OS = 18Ga. SS Brushed OP = 18Ga. SS Painted OA = 16Ga. Alum Painted IE = Extruded Alum* IP = Extruded Alum Painted* IC = 20Ga. CRS Painted IA = 16Ga. Alum Painted IB = 20Ga. SS Brushed IS = 20Ga. SS Painted  *Not IP65. N/A with .187 Prismatic Poly. lens	<b>Lumen Output*</b> L2 = Standard L3 = High  *Subject to change

<b>Color Temp.</b> 35 = 3500K 40 = 4000K 50 = 5000K	<b>Circuits</b> 1C = 1 Circuit 2C = 2 Circuits	<b>Lens</b> A = .125 Prismatic Acrylic B = .125 Prismatic Poly. C = .156 Prismatic Poly. D = .187 Prismatic Poly.* E = .125 White Frost Poly. G = .140 DR Acrylic  *Cannot use with IE or IP	<b>Voltage</b> 12 = 120V 27 = 277V 34 = 347V UN = Universal (120V-277V)	<b>Options</b> FZ = Fuse* SD2 = Step Dim. Module (50-100%)* SD3 = Step Dim. Module (25-50-100%)* EL1 = Emerg. Bat. LED Low (1100-1250 lm)** EL2 = Emerg. Bat. LED High (2200-2500 lm)*** RF = (RIF) Radio Interference Filter TH = Torx® Head Screws (with center pin) CELL1 = CA Title 24 Emerg. Batt LED Low  *Cannot use with UN voltage **If stored, batteries should be fully recharged every six months and kept between 0°C-25°C to maintain optimal battery capacity. ***Remote for SCC12. Field installation required. If stored, batteries should be fully recharged every six months and kept between 0°C-25°C to maintain optimal battery capacity.
--	--	--	---	---



**New Star Lighting**

2225 W Pershing Rd, Chicago, IL 60609  
 (773) 847-1400  
 www.newstarlighting.com

Specifications and dimensions are subject to change without notice. For additional options and dimensional details, please consult your New Star Lighting representative.

© 2024, New Star Lighting. All rights reserved. Unauthorized duplication or distribution is prohibited.

## SPECIFICATIONS

**HOUSING:** 20-Gauge formed cold rolled steel housing with continuous seam welds. Aluminum and stainless steel options available.

**FRAME:** Inset or overlapping doorframe available in aluminum, cold rolled steel, and stainless steel. Extruded inset door available in anodized aluminum or white painted aluminum. Frame held to housing via aircraft cable.

**LENS:** Acrylic lens with smooth side out. Alternate lens options available including Prismatic Polycarbonate and a White Frosted Polycarbonate.

**LED:** Available in three color temperatures 3500K, 4000K and 5000K with maximum 3-step MacAdam variation allowance. Other color temperatures available, consult factory. Minimum 50,000 hours with 70% lumen maintenance in an ambient environment 25°C temperature, compliant with IES LM-80 testing data.

**ELECTRICAL:** 120-277Vac 50/60Hz, constant current driver (<20% THD, >0.9 PF). Standard 0-10V Dimming with 1-100% range.

**FASTENERS:** Stainless steel Phillips flat head fasteners with captive cage nuts. Finish to match housing.

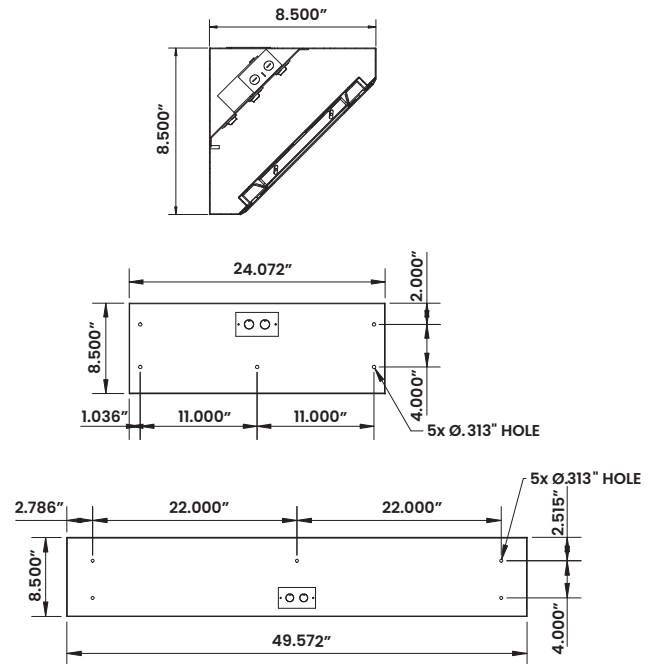
**FINISH:** White antimicrobial powder coat finish following multi-stage iron phosphate pre-treatment.

**INSTALLATION:** Corner Surface installation.

**WARRANTY:** 5 Year Warranty.

**LABEL:** Fixture is certified to UL standards for Wet Location under covered ceilings. Meets standards for ISO4/Class 10 Cleanrooms. IP65 rating per IEC60598, and NSF2 Splash/Non-Food Zone listed. This product is Made in America and complies with the Buy American Act (BAA).

## DIMENSIONAL DATA



**New Star Lighting**

2225 W Pershing Rd, Chicago, IL 60609  
(773) 847-1400  
www.newstarlighting.com

Specifications and dimensions are subject to change without notice. For additional options and dimensional details, please consult your New Star Lighting representative.

© 2024, New Star Lighting. All rights reserved. Unauthorized duplication or distribution is prohibited.

## PERFORMANCE DATA\*

Displayed information is with a .125 Prismatic Polycarbonate. \*Subject to change without notice.

MODEL	OUTPUT	COLOR TEMP	LUMENS DELIVERED	EFFICACY (lm/w)	INPUT POWER (W)
SCC12	Standard	3500K	2875	115	25
		4000K	3000	120	25
		5000K	3125	125	25
	High	3500K	4180	110	38
		4000K	4370	115	38
		5000K	4560	120	38
SCC14	Standard	3500K	5750	115	50
		4000K	6000	120	50
		5000K	6250	125	50
	High	3500K	8250	110	75
		4000K	8625	115	75
		5000K	9000	120	75



**New Star Lighting**

2225 W Pershing Rd, Chicago, IL 60609  
 (773) 847-1400  
[www.newstarlighting.com](http://www.newstarlighting.com)

Specifications and dimensions are subject to change without notice. For additional options and dimensional details, please consult your New Star Lighting representative.

© 2024, New Star Lighting. All rights reserved. Unauthorized duplication or distribution is prohibited.