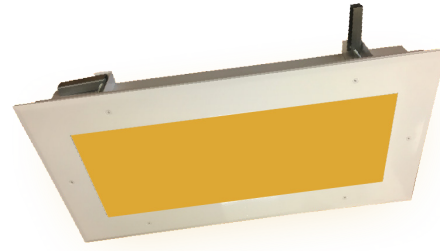


PROJECT: _____
 TYPE: _____
 PRODUCT: _____
 APPROVED BY: _____

PRODUCT FEATURES

- Intended for Healthcare Settings, Alternative Care Facilities, Cleanrooms, Hospitals, Hi-Tech Manufacturing Laboratories, Food Processing Facilities, Commercial Kitchens, Pharmaceutical, and more
- Surgical troffer available in a 1x4, 2x2, 2x4
- Recessed ceiling mount; grid or flange
- Fixture is certified to UL standards for Wet Locations under covered ceiling. IP65 rated per IEC60598. Meets ISO 3 /Class 1 Cleanrooms. NSF2 Splash/Non-Food Zone
- High-output to achieve various lighting level requirements
- for different applications
- This product is Made in America and complies with the Buy American Act (BAA)



SCR



ORDERING INFORMATION

Example: SCR22-HC/OC-A2W2351C-A-UN

SC	R				
Series	Mounting R = Recessed (Grid/Flange)	Nominal Size 14 = 1x4 22 = 2x2 24 = 2x4 *Nominal size. Dimensional data on Page 2.	Housing HC = 20Ga. CRS Painted HS = 20Ga. SS Brushed HP = 20Ga. SS Painted HA = 16Ga. Alum. Painted	Frame INSET (I) or OVERLAP (O) OC = 18Ga. CRS Painted OS = 18Ga. SS Brushed OP = 18Ga. SS Painted OA = 16Ga. Alum. Painted IE = Extruded Alum.* IP = Extruded Alum. Painted* IC = 20Ga. CRS Painted IA = 16Ga. Alum. Painted IB = 20Ga. SS Brushed IS = 20Ga. SS Painted *Not IP65. N/A with .187 Prismatic Poly. Lens	Configuration SCR14: A1W1 = 1 Amber/1 White A1W2 = 1 Amber/2 White A1W3 = 1 Amber/3 White A2W1 = 2 Amber/1 White A2W2 = 2 Amber/2 White A3W1 = 3 Amber/1 White A1 = 1 Amber LED Row A2 = 2 Amber LED Rows A3 = 3 Amber LED Rows A4 = 4 Amber LED Row SCR22-24: A2W2 = 2 Amber/2 White A2W4 = 2 Amber/4 White A2W6 = 2 Amber/6 White A4W4 = 4 Amber/4 White A4W2 = 4 Amber/2 White A6W2 = 6 Amber/2 White A2 = 2 Amber LED Row A4 = 4 Amber LED Rows A6 = 6 Amber LED Rows A8 = 8 Amber LED Row

White LED Color Temp. Blank = No White LEDs 35 = 3500K 40 = 4000K 50 = 5000K	Circuits 1C = 1 Circuit 2C = 2 Circuits* *Allows for Inboard/Outboard control.	Lens A = .125 Prismatic Acrylic B = .125 Prismatic Poly. C = .156 Prismatic Poly. D = .187 Prismatic Poly.* E = .125 White Frost Poly. G = .140 Prismatic DR Acrylic H = .125 White Frost Acrylic *Cannot be used with IE/IP	Voltage 12 = 120V 27 = 277V 34 = 347V UN = Universal (120V-277V)	Options DM = 0-10V dimming with 10-100% range DMI = 0-10V dimming with 1-100% range FZ1 = Fuse (120V) FZ2 = Fuse (277V) SD2 = Step Dim. Module (50-100%) SD3 = Step Dim. Module (30-70-100%) EL1 = Emerg. Batt. LED Low (1100-1250 lm) EL2 = Emerg. Batt. LED High (2200-2500 lm) RF = (RIF) Radio Interference Filter TH = Torx* Head screws (with center pin) RM = Row Mount* 90C = 90 CRI TGG = Triple Gasketing (Grid) TGF = Triple Gasketing (Flange) IP66 = IP66 Rated (Overlapping frame only) *Joiner bracket supplied. Fixture dimensions subject to change. Consult factory for custom wiring or knockouts.
---	--	---	---	--



New Star Lighting

2225 W Pershing Rd, Chicago, IL 60609
 (773) 847-1400
 www.newstarlighting.com

Specifications and dimensions are subject to change without notice. For additional options and dimensional details, please consult your New Star Lighting representative.

© 2024, New Star Lighting. All rights reserved. Unauthorized duplication or distribution is prohibited.

SPECIFICATIONS

HOUSING: 20 Gauge formed cold rolled steel housing with continuous seam welds. Aluminum and stainless steel options available.

FRAME: Inset or overlapping doorframe available in aluminum, cold rolled steel, and stainless steel. Extruded inset door available in anodized aluminum or white painted aluminum. Frame held to housing via aircraft cable.

LENS: Acrylic or polycarbonate lens options - smooth side out. Inset (cold rolled steel, stainless steel, and 16 gauge alum) and overlapping frame uses a rail hold down system.

LED: Available with PC Amber LEDs only or PC Amber and White LEDs. PC Amber LEDs will be installed every other row, unless otherwise specified. PC Amber has 590nm. White color temperatures available in 3000K, 4000K and 5000K with maximum 3-step MacAdam variation allowance. Narrow Spectrum Amber and other white LED color temperatures are available. Consult factory. Minimum 80 CRI standard with optional minimum 90 CRI available.

ELECTRICAL: 0-10V dimming available with 10-100% range and 1-100% range. Must specify dimming under options.

FASTENERS: Stainless steel Philips flat head screws with captive cage nuts. Finish to match doorframe.

FINISH: White antimicrobial powder coat finish following multistage iron phosphate pretreatment. Stainless steel brushed fixtures are brushed on all exposed room-side surfaces.

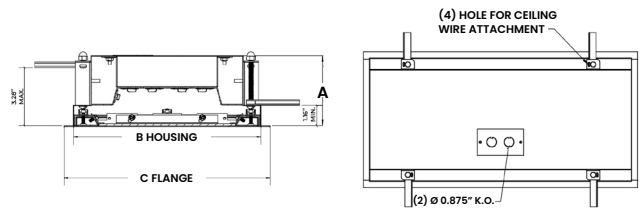
GASKET: Closed cell EPDM and closed cell silicone gaskets prevent air contaminations from entering the fixture. Gasketing seals lens to doorframe and doorframe to housing. Optional triple gasketing, must specify Grid or Flange installation.

INSTALLATION: Recessed mounting accommodates Grid and Flange installations. Recessed fixtures will be supplied with adjustable swing arms that can be used for Flange applications or taped to the side for Grid applications. Recessed install compatible with 1-1/2" and 15/16" Grid systems. Mounting for custom ceilings available, consult factory.

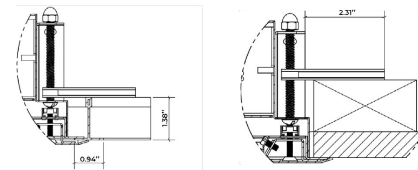
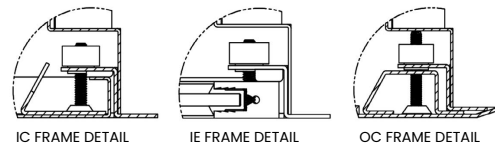
WARRANTY: Limited five (5) year warranty.

LABEL: Fixture is certified to UL standards for Wet Location under covered ceiling. IP65 rated per IEC60598. Meets ISO 3/Class 1 Cleanrooms. NSF2 Splash/Non-Food Zone.

DIMENSIONAL DATA



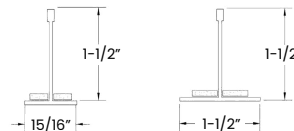
	A	B	C	REC. CEILING CUT-OUT
SSR14	4.00"	10.64" X 46.64"	11.69" X 47.69"	10.88" X 46.88"
SSR22	4.00"	22.64" X 22.64"	23.69" X 23.69"	22.88" X 22.88"
SSR24	4.00"	22.64" X 46.64"	23.69" X 47.69"	10.88" X 46.88"



SCR (W/OC FRAME) RECESSED GRID SCR (W/OC FRAME) RECESSED FLANGE

GRID COMPATIBILITY:

- SCR14: Spaced at 12" x 48" Centers
- SCR22: Spaced at 24" x 24" Centers
- SCR24: Spaced at 24" x 48" Centers



New Star Lighting

2225 W Pershing Rd, Chicago, IL 60609
(773) 847-1400
www.newstarlighting.com

Specifications and dimensions are subject to change without notice. For additional options and dimensional details, please consult your New Star Lighting representative.

© 2024, New Star Lighting. All rights reserved. Unauthorized duplication or distribution is prohibited.

PERFORMANCE DATA

*Data is with 80 CRI chip. LEDs are frequently updated therefore values may change without notice.

AMBER LEDs	OUTPUT	LUMENS DELIVERED	EFFICACY (lm/W)	INPUT POWER (W)
SCR14	A1	2188	88	25
	A2	4375	88	50
	A3	6564	88	75
	A4	8750	88	100
SCR22	A2	2188	88	25
	A4	4375	88	50
	A6	6300	84	75
	A8	8750	88	100
SCR24	A2	4375	88	50
	A4	8750	88	100
	A6	12600	84	150
	A8	17500	88	200



New Star Lighting

2225 W Pershing Rd, Chicago, IL 60609
 (773) 847-1400
www.newstarlighting.com

Specifications and dimensions are subject to change without notice. For additional options and dimensional details, please consult your New Star Lighting representative.

© 2024, New Star Lighting. All rights reserved. Unauthorized duplication or distribution is prohibited.

PERFORMANCE DATA

*Data is with 80 CRI chip. LEDs are frequently updated therefore values may change without notice.

MODEL	OUTPUT	COLOR TEMP.	LUMENS DELIVERED	EFFICACY (lm/w)	INPUT POWER (W)
SCR14	A1W1	3500K	2875	115	25
		4000K	3000	120	25
		5000K	3125	125	25
		Amber LED	2188	88	25
	A1W2	3500K	5750	115	50
		4000K	6000	120	50
		5000K	6250	125	50
		Amber LED	2188	88	25
	A1W3	3500K	8250	110	75
		4000K	8625	115	75
		5000K	9000	120	75
		Amber LED	2188	88	25
	A2W1	3500K	2875	115	25
		4000K	3000	120	25
		5000K	3125	125	25
		Amber LED	4375	88	50
	A2W2	3500K	5750	115	50
		4000K	6000	120	50
		5000K	6250	125	50
		Amber LED	4375	88	50
A3W1	3500K	2875	115	25	
	4000K	3000	120	25	
	5000K	3125	125	25	
	Amber LED	6564	88	75	



New Star Lighting

2225 W Pershing Rd, Chicago, IL 60609
 (773) 847-1400
www.newstarlighting.com

Specifications and dimensions are subject to change without notice. For additional options and dimensional details, please consult your New Star Lighting representative.

© 2024, New Star Lighting. All rights reserved. Unauthorized duplication or distribution is prohibited.

PERFORMANCE DATA CONTINUED

*Data is with 80 CRI chip. LEDs are frequently updated therefore values may change without notice.

MODEL	OUTPUT	COLOR TEMP.	LUMENS DELIVERED	EFFICACY (lm/w)	INPUT POWER (W)
SCR22	A2W2	3500K	5750	115	50
		4000K	6000	120	50
		5000K	6250	125	50
		Amber LED	4200	84	50
	A2W4	3500K	6000	120	50
		4000K	6250	125	50
		5000K	6500	130	50
		Amber LED	2188	88	25
	A2W6	3500K	8625	115	75
		4000K	9000	120	75
		5000K	9375	125	75
		Amber LED	2188	88	25
	A4W4	3500K	6000	120	50
		4000K	6250	125	50
		5000K	6500	130	50
		Amber LED	4375	88	50
	A4W2	3500K	5750	115	50
		4000K	6000	120	50
		5000K	6250	125	50
		Amber LED	4375	88	50
A6W2	3500K	3000	120	25	
	4000K	3125	125	25	
	5000K	3250	130	25	
	Amber LED	6300	84	75	



New Star Lighting

2225 W Pershing Rd, Chicago, IL 60609
 (773) 847-1400
www.newstarlighting.com

Specifications and dimensions are subject to change without notice. For additional options and dimensional details, please consult your New Star Lighting representative.

© 2024, New Star Lighting. All rights reserved. Unauthorized duplication or distribution is prohibited.

PERFORMANCE DATA CONTINUED

*Data is with 80 CRI chip. LEDs are frequently updated therefore values may change without notice.

MODEL	OUTPUT	COLOR TEMP.	LUMENS DELIVERED	EFFICACY (lm/w)	INPUT POWER (W)
SCR24	A2W2	3500K	6000	120	50
		4000K	6250	125	50
		5000K	6500	130	50
		Amber LED	4375	88	50
	A2W4	3500K	12000	120	100
		4000K	12500	125	100
		5000K	13000	130	100
		Amber LED	4375	88	50
	A2W6	3500K	17250	115	150
		4000K	18000	120	150
		5000K	18750	125	150
		Amber LED	4375	88	50
	A4W4	3500K	12000	120	100
		4000K	12500	125	100
		5000K	13000	130	100
		Amber LED	8750	88	100
	A4W2	3500K	6000	120	50
		4000K	6250	125	50
		5000K	6500	130	50
		Amber LED	8750	88	0100
A6W2	3500K	6000	120	50	
	4000K	6250	125	50	
	5000K	6500	130	50	
	Amber LED	12600	84	150	



New Star Lighting

2225 W Pershing Rd, Chicago, IL 60609
 (773) 847-1400
www.newstarlighting.com

Specifications and dimensions are subject to change without notice. For additional options and dimensional details, please consult your New Star Lighting representative.

© 2024, New Star Lighting. All rights reserved. Unauthorized duplication or distribution is prohibited.