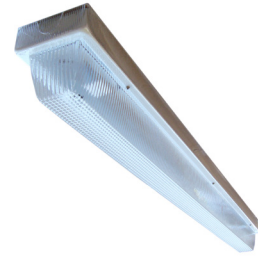


PROJECT: _____
 TYPE: _____
 PRODUCT: _____
 APPROVED BY: _____



51CA

PRODUCT FEATURES

- Intended for Public Areas, Transportation Terminals, Public Housing, Warehouses, Schools, and more
- Surface mount wraparound
- Available in 4' length
- This product is Made in America and complies with the Buy American Act requirements

ORDERING INFORMATION

Example: 51CA4-L1351C-UN



51CA	4			
Series	Nominal Size* 4 = 4ft	Lumen Output* L1 = Standard L2 = High CL = Custom Lumen Output**	Color Temp. 35 = 3500°K 40 = 4000°K 50 = 5000°K	Circuits 1C = 1 Circuit 2C = 2 Circuits
	<small>*Nominal Size. Dimensional Data on Page 2.</small>	<small>**Subject to change. Performance Data on Page 2.</small>		

Voltage 12 = 120V 27 = 277V 34 = 347V UN = Universal (120V-277V)	Options FZ1 = Fuse (120V) FZ2 = Fuse (277V) SS = Stainless Steel Housing (Brushed finish) EL1 = Emergency Battery LED 10W EL2 = Emergency Battery LED 20W* AH = Allenhead Screws with Center Pin Reject WL = Wet Location (under covered ceilings)
	<small>*Remote. Field installation required.</small>

SPECIFICATIONS

HOUSING: Die-formed 16-gauge cold rolled steel.

LENS: .125" Pressure molded UV-stabilized clear prismatic polycarbonate lens.

LED: Available in three color temperatures: 3500K, 4000K, and 5000K with maximum 3-step MacAdam variation allowance. Other color temperatures available, consult factory.

FASTENERS: Tamper resistant Torx® head screws with center pin reject.

FINISH: White powder coat finish following multistage iron phosphate pre-treatment.

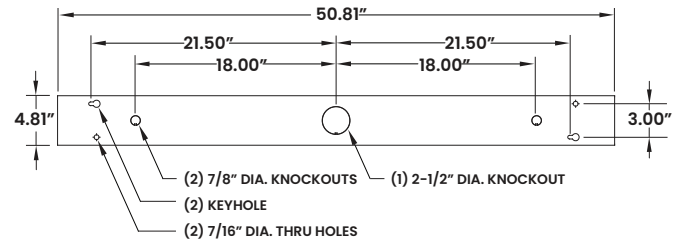
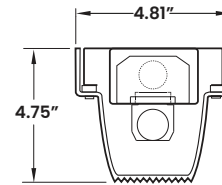
GASKET: Neoprene gasket to prevent water infiltration.

INSTALLATION: Surface installation. Hardware by others.

WARRANTY: New Star Promise.

LABEL: Fixture is certified to UL standards for Damp locations.

DIMENSIONAL DATA



The 51CA Series is covered by our New Star Promise.

Our promise means we will repair or replace any of our High Abuse or Vandal-Resistant architectural luminaries when installed according to our instructions for the life of the original installation if the fixture should fail due to physical abuse*.

*Damage caused by gunfire and chemical reactions is not covered by the New Star Promise.

PERFORMANCE DATA

*LEDs are frequently updated therefore values may change without notice. Visit www.newstarlighting.com for additional information and IES files.

MODEL	OUTPUT	FUNCTION	LUMENS DELIVERED	EFFICACY (lm/w)	INPUT POWER (W)
51CA4	L1 = Low	4000°K	2750	110	25
	L2 = High	4000°K	5500	110	50