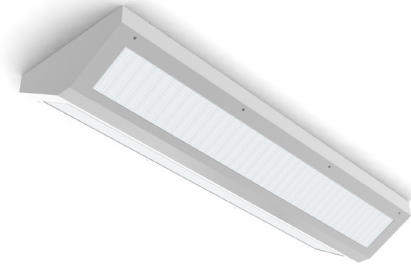


PROJECT: _____
 TYPE: _____
 PRODUCT: _____
 APPROVED BY: _____



53V

PRODUCT FEATURES

- Intended for Minimum to Supermax Confinement, Psychiatric Wards, Public Housing, Detention Centers, Transportation, Athletic Facilities, and more
- Surface fixture available in 2ft and 4ft
- This product is Made in America and complies with the Buy American Act requirements

ORDERING INFORMATION

Example: 53V2-A-L2401-A/0-UN



53V				
Series	Nominal Size	Housing	Lumen Output*	Color Temp.
	2 = 2ft 4 = 4ft <small>*Nominal size. Dimensional Data on Page 2.</small>	A = 12Ga. CRS (Painted) B = 14Ga. CRS (Painted) C = 16Ga. CRS (Painted) D = 18Ga. CRS (Painted) E = 14Ga. SS (Brushed) F = 16Ga. SS (Brushed) G = 18Ga. SS (Brushed) H = 14Ga. SS (Painted) J = 16Ga. SS (Painted) K = 18Ga. SS (Painted)	L2 = Standard L4 = Medium <small>*Subject to change. Performance Data on Page 3.</small>	35 = 3500K 40 = 4000K 50 = 5000K

Circuits	Outer Lens	Inner Lens	Voltage	Accessory
1 = 1 Circuit 2 = 2 Circuits	0 = No Lens A = .125 Clear Poly. B = .156 Clear Poly. 1 = .187 Clear Poly. 2 = .250 Clear Poly. 3 = .375 Clear Poly. 4 = .500 Clear Poly. 5 = .187 Clear Temp. Glass 6 = .250 Clear Temp. Glass 7 = .375 Clear Temp. Glass* 8 = .500 Clear Temp. Glass* 9 = .750 Clear Temp Glass* <small>*Must use with a 12Ga. or 14Ga. Frame.</small>	A = .125 Prismatic Acrylic B = .125 Prismatic Poly. C = .156 Prismatic Poly. D = .187 Prismatic Poly. F = .156 Prismatic Acrylic G = .140 DR Acrylic LC3 = .125 White Frosted Poly.	12 = 120V 27 = 277V 34 = 347V UN = Universal (120V-277V)	FZ = Fuse* LN = LED Night Light UV = .005 UV Absorbing Overlay AH = Allenhead Screws with center pin reject DM = 0-10V dimming with 10-100% range. EL1 = Emerg. Bat. LED Low** EL2 = Emerg. Bat. LED High** <small>*Cannot use with UN voltage **If stored, batteries should be fully recharged every six months and kept between 0°C-25°C to maintain optimal battery capacity.</small>

SPECIFICATIONS

HOUSING: Die-formed, seam welded, and ground smooth cold rolled steel or stainless steel clamshell design. Incorporates a removable reflector unitized with all electrical components for easy installation and maintenance. Clamshell design incorporates a contraband drop slot gap between the ceiling and back of fixture.

BACKPLATE: Die-formed with contraband drop slot and embossed mounting holes (material to match housing). Security caulking between ceiling and fixture is not required with this backplate design.

HINGE: 16-Gauge full length continuous, staked piano hinge with welded ends to prevent removal (material to match housing).

LENS: Outer and Inner lens options secured by "Z" retainers with weld studs spaced six inches apart for maximum strength.

LED: Available in three color temperatures 3500K, 4000K and 5000K. Other color temperatures available, consult factory. Standard 0-10V driver provided. Optional dimming function (DM) with 10-100% range.

FASTENERS: Tamper resistant Torx® head screws with center pin reject. Optional Phillips screws available.

FINISH: White powder coat finish following multistage iron phosphate pretreatment.

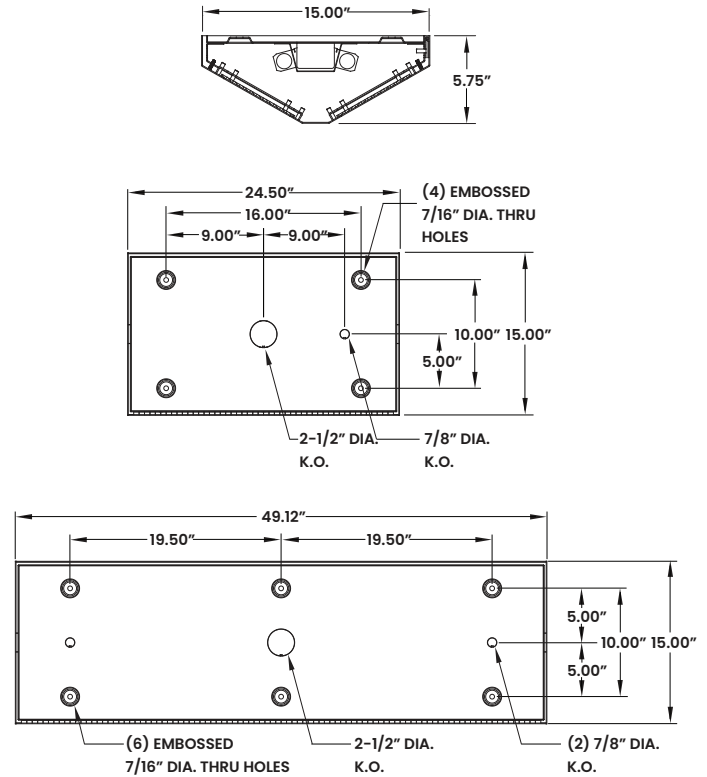
GASKET: Black neoprene gasket around door frame to prevent light leaks.

MOUNTING: Surface installation.

WARRANTY: New Star Promise.

LABEL: Fixture is certified to UL standards by Intertek Testing Laboratory.

DIMENSIONAL DATA



The 53V Series is covered by our New Star Promise.

Our promise means we will repair or replace any of our High Abuse or Vandal Resistant architectural luminaires when installed according to our instructions for the life of the original installation if the fixture should fail due to physical abuse.*

*Exclusions to the New Star Promise are gunfire and chemical reactions

PERFORMANCE DATA

*LEDs are frequently updated therefore values may change without notice.

MODEL	OUTPUT	COLOR TEMP.	LUMENS DELIVERED	EFFICACY (lm/W)	INPUT POWER (W)
53V2	Medium	3500K	2875	115	25
		4000K	3000	120	25
		5000K	3125	125	25
	High	3500K	5500	110	50
		4000K	5750	115	50
		5000K	6000	120	50
53V4	Medium	3500K	5750	115	50
		4000K	6000	120	50
		5000K	6250	125	50
	High	3500K	11000	110	100
		4000K	11500	115	100
		5000K	12000	120	100

