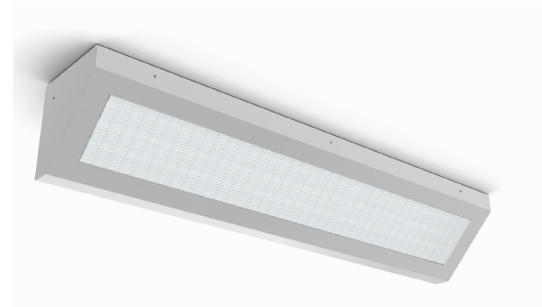


PROJECT: _____
 TYPE: _____
 PRODUCT: _____
 APPROVED BY: _____



554

PRODUCT FEATURES

- 18-14 Gauge non-clamshell corner luminaire
- 16-Gauge concealed full length continuous staked piano hinge with welded ends
- Lens options held in place with Z-Channel and weld studs
- Black neoprene gasket around door frame to prevent light leaks
- Tamper-resistant Torx® fasteners with center pin reject
- Wet location optional
- This product is Made in America and complies with the Buy American Act (BAA), and the Build America, Buy America Act (BABA)

ORDERING INFORMATION

Example: 571-A-L135-1-0012



55					
Series	Nominal Size 1 = 1ft 2 = 2ft 4 = 4ft *Nominal Size. Dimensional Data on page 2.	Gauge A = 12Ga. CRS Painted B = 14Ga. CRS Painted C = 16Ga. CRS Painted D = 18Ga. CRS Painted E = 14Ga. SS Mill Finish F = 16Ga. SS Mill Finish G = 18Ga. SS Mill Finish H = 14Ga. SS Painted J = 16Ga. SS Painted K = 18Ga. SS Painted	Number of Lamps L1 = Standard L2 = High	Color Temp. 35 = 3500K 40 = 4000K 50 = 5000K TW1 = Tunable White 2700K to 5000K TW2 = Tunable White 2700K to 6500K *See Page 2 to specify system.	Driver 1 = 1 Driver 2 = 2 Drivers TW(#)= Tunable White Driver* *See Page 2 to specify system.

Outer Lens 0 = No Lens A = .125 Clear Poly. B = .156 Clear Poly. 1 = .187 Clear Poly. 2 = .250 Clear Poly. 3 = .375 Clear Poly. 4 = .500 Clear Poly. 5 = .187 Clear Temp Glass 6 = .250 Clear Temp Glass 7 = .375 Clear Temp Glass* 8 = .500 Clear Temp Glass* 9 = .750 Clear Temp Glass* *Must use with 12Ga. or 14Ga. Frame	Inner Lens 0 = No Lens A = .125 Prismatic Acrylic B = .125 Prismatic Poly. C = .156 Prismatic Poly. D = .187 Prismatic Poly. E = .156 Prismatic Temp Glass F = .156 Prismatic Acrylic G = .140 DR Acrylic LC3 = .125 White Frosted Poly.	Voltage 12 = 120V 27 = 277V 34 = 347V UN = Universal (120V-277V)	Options DLN = Dimmable LED Night Light. Consult factory for available color/ temperatures TH = Torx® Head Screws with center pin AH = Allen Head Screws with Center Pin Reject FZ = Fuse Holder* WL = Wet Location UV = .005 UV Absorbing Overlay PF = Plaster Frame & Yolk CB = Cross Bar LN = LED Night Light (3500K) *Cannot use with UN voltage.
---	--	---	---

SPECIFICATIONS

HOUSING: Die formed, seam welded, and ground smooth (specify material and gauge). Incorporates a removable reflector unitized with all electrical components for easy installation and maintenance.

FRAME: Die formed one-piece frame with tightly closed corners (material and gauge to match housing).

HINGE: 16-Gauge full length continuous, staked piano hinge, with welded ends. to prevent removal(material to match housing).

LENS: Polycarbonate or tempered glass lens sealed to frame.

LENS RETAINER: 14-Gauge cold rolled retaining angles attached to through door studs for positive lens clamping.

LED: Available in three standard color temperatures 3500K, 4000K & 5000K. Other color temperatures available, consult factory.

LED NIGHT LIGHT: Integrated switch allows light selection at 100%,70%,40% and 10% levels.

FINISH: White antimicrobial powder coat finish on exposed surfaces following multistage iron phosphosphate pre-treatment.

TUNABLE DRIVER OPTIONS:

DALI8 - DALI Type 8 (One DALI Address)

TWD - Two channel 0-10V dimming: one channel for brightness, one channel for CCT

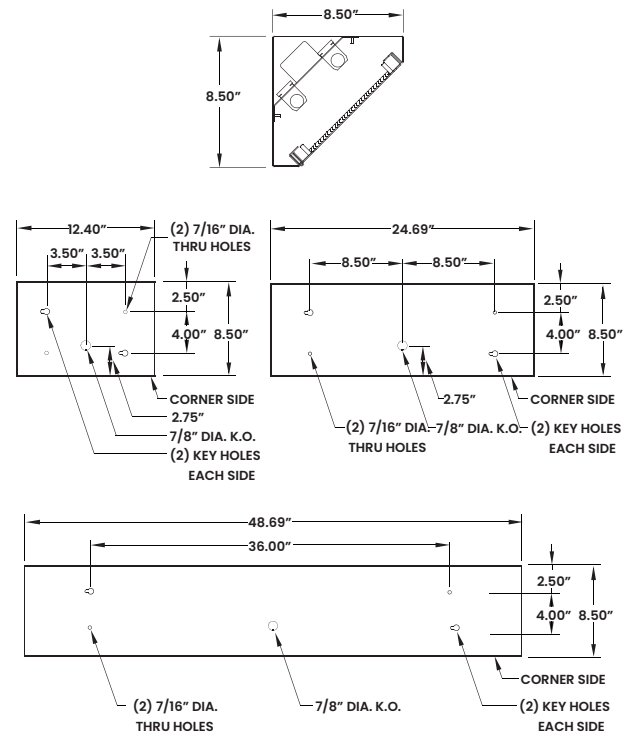
GASKET: Black neoprene gasket around door frame to prevent light leaks.

FASTENERS: Tamper-resistant Torx® screws with center pin reject

WARRANTY: Five (5) year warranty.

LABEL: Fixture is certified to UL standards by Intertek Testing Laboratory.

DIMENSIONAL DATA



The 554 Series is covered by our New Star Promise.

Our promise means we will repair or replace any of our High Abuse or Vandal Resistant architectural luminaires when installed according to our instructions for the life of the original installation if the fixture should fail due to physical abuse.*

*Exclusions to the New Star Promise are gunfire and chemical reactions

PERFORMANCE DATA

Based on a .125 Clear Polycarbonate out lens / .125 Prismatic Acrylic Inner lens

	# LED BOARDS	# ROWS	WATTAGE	EFFICACY (lm/W)	DELIVERED LUMENS
551	M1	1	30W	83	2425
552	L2	2	25W	115	2875
	L3	3	37.5W	115	4315
554	L2	2	50W	115	5750
	L3	3	75W	115	8650



New Star Lighting

2225 W Pershing Rd, Chicago, IL 60609
 (773) 847-1400
www.newstarlighting.com

Specifications and dimensions are subject to change without notice. For additional options and dimensional details, please consult your New Star Lighting representative.

© 2024, New Star Lighting. All rights reserved. Unauthorized duplication or distribution is prohibited.