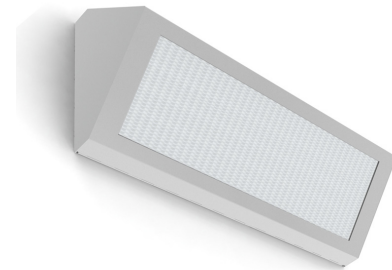


PROJECT: _____
 TYPE: _____
 PRODUCT: _____
 APPROVED BY: _____

PRODUCT FEATURES

- Intended for Minimum to Supermax Correctional Facilities, Detention Centers, Public Housing, Athletic Facilities, and more
- Available in 2x2 and 2x4 clamshell housing with contraband drop slot between ceiling and back of luminaire
- Inner and outer lens secured by "Z" bracket retention system with 6" stud spacing for maximum strength
- This product is Made in America and complies with the Buy American Act requirements



55S Series

ORDERING INFORMATION

Example: 55S2-B-L140-1C-A/A-UN



55S					
Series	Nominal Size 2 = 2ft 4 = 4ft *Nominal size. Dimensional Data on Page 2.	Housing B = 14Ga. CRS Painted C = 16Ga. CRS Painted D = 18Ga. CRS Painted E = 14Ga. SS Brushed F = 16Ga. SS Brushed G = 18Ga. SS Brushed H = 14Ga. SS Painted J = 16Ga. SS Painted K = 18Ga. SS Painted	Lumen Output* 55S2 L1 = Low L2 = High CL = Custom Lumen Output** 55S2 L2 = Low L3 = High CL = Custom Lumen Output** ***Subject to change. Performance Data on page 3. ** Must be specified at time of quote. Must not exceed fixture maximum output.	Color Temp. 35 = 3500K 40 = 4000K 50 = 5000K	Circuits 1 = 1 Circuit 2 = 2 Circuits* *Refers to Inboard/Outboard control. N/A with LI.

Outer Lens 0 = No Lens A = .125 Clear Poly. B = .156 Clear Poly. 1 = .187 Clear Poly. 2 = .250 Clear Poly. 3 = .375 Clear Poly. 4 = .500 Clear Poly. 5 = .187 Clear Temp. Glass 6 = .250 Clear Temp. Glass 7 = .375 Clear Temp. Glass* 8 = .500 Clear Temp. Glass* 9 = .750 Clear Temp Glass* *Must use with a 12Ga. or 14Ga. Frame.	Inner Lens A = .125 Prismatic Acrylic B = .125 Prismatic Poly. C = .156 Prismatic Poly. D = .187 Prismatic Poly. F = .156 Prismatic Acrylic G = .140 DR Acrylic LC3 = .125 White Frosted Poly.	Voltage 12 = 120V 27 = 277V 34 = 347V UN = Universal (120V-277V)	Accessory FZ1 = Fuse (120V) FZ2 = Fuse (277V) LN = LED Night Light* EL1 = Emerg. Bat LED 10W** EL2 = Emerg. Bat LED 20W** AH = Allenhead Screws with center pin reject CEL1 = CA Title 24 Emerg. Batt LED Low CEL2 = CA Title 24 Emerg. Batt LED High (Remote) UV = .005 UV Absorbing Overlay SL = Flush Button Switch on Left SR = Flush Button Switch on Right *3500K. Non-dimming. Integrated switch allows light levels at 100%, 70%, 40% and 10% levels. **If stored, batteries should be fully recharged every six months and kept between 0°C-25°C to maintain optimal battery capacity.
--	--	---	---

SPECIFICATIONS

HOUSING: Die-formed, seam welded, and ground smooth surface clamshell design in cold rolled steel or stainless-steel. Incorporates a removable reflector unitized with all electrical components for easy installation and maintenance.

BACKPLATE: Die-formed with contraband drop slot and embossed mounting holes (material to match housing). Security caulking between ceiling and fixture is not required with this backplate design.

HINGE: 16-Gauge full length continuous, staked piano hinge with welded ends to prevent removal (material to match housing).

LENS: Outer and Inner lens options secured by "Z" retainers with weld studs spaced six inches apart for maximum strength.

LED: Available in three color temperatures 3500K, 4000K, and 5000K with maximum 3-step MacAdam variation allowance. Other color temperatures available, consult factory. Minimum 50,000 hours with 70% lumen maintenance in a 25°C ambient temperature, compliant with IES LM-80 testing standards.

ELECTRICAL: 120-277VAC or 347VAC, 50/60HZ electrical input high power factor electronic, constant current driver (<20% THD, >0.95 PF). Standard 0-10V Dimming with 1-100% range.

FASTENERS: Tamper resistant Torx® head screws with center pin reject. Optional Phillips screws available.

FINISH: White powder coat finish following multi-stage iron phosphate pretreatment.

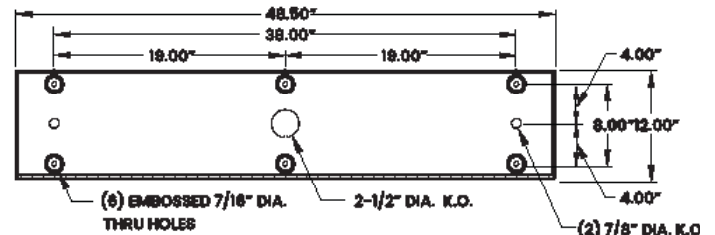
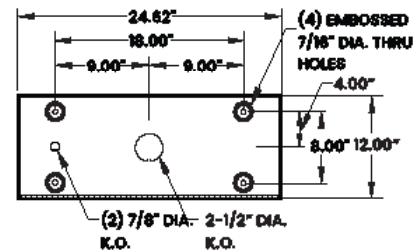
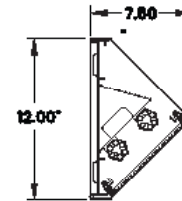
GASKET: Black neoprene gasket around door frame to prevent light leaks.

MOUNTING: Surface wall installation.

WARRANTY: New Star Promise.

LABEL: Fixture is certified to UL standards. This product is Made in America and complies with the Buy American Act (BAA).

DIMENSIONAL DATA



The 55S Series is covered by our New Star Promise.

Our promise means we will repair or replace any of our High Abuse or Vandal-Resistant architectural luminaires when installed according to our instructions for the life of the original installation if the fixture should fail due to physical abuse*.

*Damage caused by gunfire and chemical reactions is not covered by the New Star Promise.

PERFORMANCE DATA

*LEDs are frequently updated therefore values may change without notice.

MODEL	OUTPUT	COLOR TEMP.	LUMENS DELIVERED	EFFICACY (lm/w)	INPUT POWER (W)
55S2	L1 = Low	4000K	1375	110	12.5
	L2 = High	4000K	2750	110	25
55S4	L1 = Low	4000K	2750	110	25
	L2 = Low	4000K	5500	110	50



New Star Lighting

2225 W Pershing Rd, Chicago, IL 60609
(773) 847-1400

www.newstarlighting.com

Specifications and dimensions are subject to change without notice. For additional options and dimensional details, please consult your New Star Lighting representative.

© 2024, New Star Lighting. All rights reserved. Unauthorized duplication or distribution is prohibited.