

PROJECT: _____
 TYPE: _____
 PRODUCT: _____
 APPROVED BY: _____



CCUC Series

PRODUCT FEATURES

- Intended for Task Lighting, Patient Rooms, Nurse Stations, Desk Stations, Offices, Research Facilities, Laboratories, Display Cases, and more
- Slim profile design (.35" depth) available in five lengths: 11", 18", 23", 36", and 42"
- Standard button switch to adjust CCT: 2700K, 3000K, 3500K, 4000K, and 5000K
- Touch-free ON/OFF and dimming controls for infection control
- Hassle-free surface mount installation with optional linking accessories

ORDERING INFORMATION

Example: CCUC-RM-23/2- 11/3-42/1-80-W-60WP/1-12LC/4



| CCUC | | | | | | |
|--------|---|---|-----------------------------------|--|--|--|
| Series | Configuration SA = Stand Alone RM = Row Mount | Size / Quantity 11 = 11" / # 18 = 18" / # 23 = 23" / # 36 = 36" / # 42 = 42" / # | CRI 80 = 80 CRI 90 = 90 CRI | Finish* W = White BK = Black *Finishes are standard antimicrobial | Remote Driver/Quantity* 60WP RDE / # = 60W Remote Driver Enclosure** 80WP RDE / # = 80W Remote Driver Enclosure** 100WP RDE / # = 100W Remote Driver Enclosure** *Remote Driver for Hard Wire installation. If Wall Plug is desired, leave blank and order Wall Plug under Accessories. **120-277V 24VDC Driver, integrated with aluminum J-Box with 24" power cord; (consult factory for other lengths and lead time). See Page 3 for maximum run length and enclosure dimensions. | Accessories / Quantity 6LC = 6" Linking Connector / # 12LC = 12" Linking Connector / # 24LC = 24" Linking Connector / # EC = End-to-End Connector / # 30WP = 30W, Wall Plug (120-240V)* 36WP = 36W, Wall Plug (120-240V)* 60WP = 60W, Wall Plug (120-240V)* *Wall Plugs take the place of a remote driver & enclosure (RDE). Wall Plugs come with 5' cable length. |

SPECIFICATIONS

CONSTRUCTION: Extruded aluminum housing. Endcap constructed of ABS material.

LENS: Diffused acrylic light guide made of PMMA material provides uniform and diffuse light.

LED: Button switch adjustable color temperatures 2700K, 3000K, 3500K, 4000K, and 5000K. Minimum 90 CRI standard. Minimum 30,000h with 70% of lumen maintenance in 25°C ambient temperature, in compliance with IES LM-70 testing measurements.

POWER SUPPLY: 24V Low voltage for all lengths; 24W remote wall plug supports a maximum of 123.54" total system run length.

INPUT VOLTAGE: 120V, 277V, UNV.

TOUCHLESS DIMMING: Touch-free ON/OFF operation via PIR Vacancy Sensor. Position hand over sensor until dimming is activated and light level achieved. Adjustment from lowest to highest light level - and reverse occurs over a 15 second period of time.

AMBIENT TEMP: Suitable for -20°C to 45°C ambient temperatures.

FINISH: EPA and FDA approved white antimicrobial powder coat finish following multi-stage iron phosphate pre-treatment. Black finish optional.

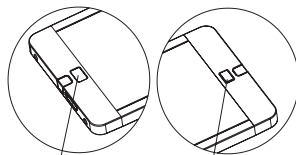
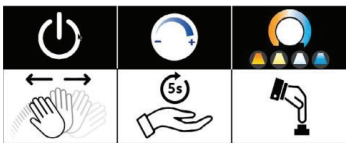
INSTALLATION: Surface installation. Keyhole slots for easy installation. Mounting screws are not provided. 24W Wall plug and end-to-end connectors are standard and shipped with luminaire.

LABEL: UL Listed for damp locations.

FUNCTIONALITY

1. Wave hand underneath sensor to turn luminaire ON/OFF.
2. Position hand in within 3" from sensor without moving, until dimming is activated and desired light level has been achieved.

BUTTON SWITCH:
Switch adjustable CCT: ON > 2700K > 3000K > 3500 > 4000K > 5000K



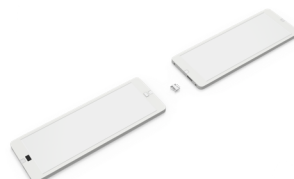
IR Sensor

Button Switch

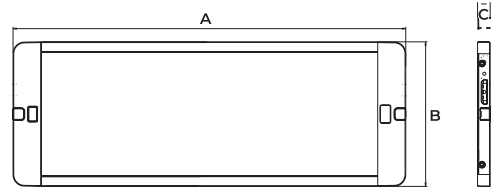
CONNECTION EXAMPLES

Connection 1: Linking cord

Connection 2: End-to-End Connector



DIMENSIONAL DATA



| MODEL | A | B | C | WATTAGE |
|--------|--------|-------|-------|---------|
| CCUC11 | 11.00" | 3.94" | 0.35" | 4W |
| CCUC18 | 18.00" | 3.94" | 0.35" | 6W |
| CCUC23 | 22.50" | 3.94" | 0.35" | 8W |
| CCUC36 | 36.54" | 3.94" | 0.35" | 13W |
| CCUC42 | 41.18" | 3.94" | 0.35" | 15W |

ACCESSORIES

Interconnect cord set in 6", 12", and 24" lengths:



120-240V Adapter (output 24V 1A) standard:



End-to-End Connector:



PERFORMANCE DATA*

*According to IES standards, a useful lumen range for undercabinet lighting is typically between 200 and 500 lumens per foot. New Star's Undercabinet luminaires meet IES standards for task lighting.

| MODEL | OUTPUT | DELIVERED LUMENS** | INPUT POWER (W) |
|--------|---------------|--------------------|-----------------|
| CCUC11 | ST = Standard | 280 | 4 |
| CCUC18 | ST = Standard | 420 | 6 |
| CCUC23 | ST = Standard | 520 | 8 |
| CCUC36 | ST = Standard | 900 | 13 |
| CCUC42 | ST = Standard | 1100 | 15 |

**LEDs are frequently updated therefore values may change without notice.

MAXIMUM NUMBER OF CONNECTED UNDERCABINETS

| DRIVER | CCUC11 | CCUC18 | CCUC22 | CCUC36 | CCUC42 |
|--------|--------|--------|--------|--------|--------|
| 60W | 13 | 9 | 6 | 4 | 3 |
| 80W | 18 | 12 | 9 | 6 | 5 |
| 100W | 22 | 15 | 11 | 7 | 6 |

MAX RUN LENGTH

In addition to the chart above, if you have a combination of luminaire lengths in a run we can accommodate the following based on remote driver wattage:

60W= 126" any combination length of undercabinet

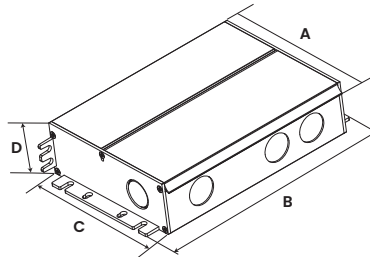
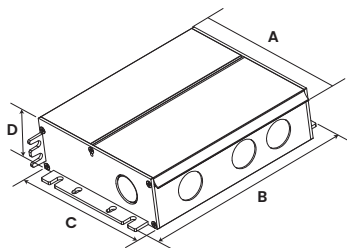
80W= 210" any combination length of undercabinet

100W= 252" any combination length of undercabinet

REMOTE DRIVER DIMENSIONAL DATA

60W REMOTE DRIVER ENCLOSURE

80W & 100W REMOTE DRIVER ENCLOSURE



| DRIVER | A | B | C | D |
|--------|-------|-------|------|-------|
| 60W | 4.85" | 6.22" | 4.7" | 1.65" |
| 80W | 4.85" | 7.4" | 4.7" | 1.65" |
| 100W | 4.85" | 7.4" | 4.7" | 1.65" |

REMOTE DRIVER DISTANCES

| WIRE GAUGE | 12AWG | 14AWG | 16AWG | 18AWG | Total LED load |
|------------------|----------|-----------|----------|----------|----------------|
| Maximum Distance | 20m/65ft | 12m/39ft | 8m/26ft | 5m/16ft | 30W 24V |
| | 10m/32ft | 6.5m/21ft | 4m/13ft | 2.5m/8ft | 60W 24V |
| | 6m/20ft | 3.5m/11ft | 2.5m/8ft | 1.5m/5ft | 100W 24V |



New Star Lighting

2225 W Pershing Rd, Chicago, IL 60609
(773) 847-1400

www.newstarlighting.com

Specifications and dimensions are subject to change without notice. For additional options and dimensional details, please consult your New Star Lighting representative.

© 2024, New Star Lighting. All rights reserved. Unauthorized duplication or distribution is prohibited.