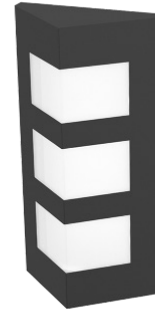


PROJECT: \_\_\_\_\_  
 TYPE: \_\_\_\_\_  
 PRODUCT: \_\_\_\_\_  
 APPROVED BY: \_\_\_\_\_

## PRODUCT FEATURES

- Non-ferrous construction and remote power supplies provide safe operating conditions for MRI machines, medical imaging equipment, and other magnetically sensitive apparatus
- Non-ferrous construction, available in 1ft, 2ft, and 4ft
- Surface Wall Mount Installation
- This product was Made in America and complies with the Buy American Act and the Build America, Buy America Act



LAM-MRI Series

## ORDERING INFORMATION

Example: LAM1-MRI-AL-L230-1C-LC3-UN



LAM		MRI	AL		
<b>Series</b>	<b>Size*</b> 1 = 1ft 2 = 2ft 4 = 4ft  *Nominal Size. Dimensional Data on Page 2.	<b>MRI = Remote Driver*</b>  *Remote Power Supply, ordered separately. Requires proper filter components supplied by others. Consult factory for additional information.	<b>Housing</b> AL = Aluminum	<b>Lumen Output*</b> <b>LAM1:</b> L2 = Standard L3 = Medium <b>LAM2-4:</b> L1 = Standard L2 = Medium L3 = High	<b>Color Temp.</b> 30 = 3000K 35 = 3500K 40 = 4000K 50 = 5000K
1C	LC3	UN			
<b>Circuits</b> 1C = 1 Circuit	<b>Lens</b> LC3 = .125 White Frosted Poly.	<b>Voltage</b> UN = Universal (120V-277V)	<b>Finish</b> BK = Black WH = Matte White BZ = Bronze CC = Custom Color**  *Subject to additional fees. Must specify RAL number at time of PO.	<b>Options</b> 90C = 90CRI	



**New Star Lighting**  
 2225 W Pershing Rd, Chicago, IL 60609  
 (773) 847-1400  
[www.newstarlighting.com](http://www.newstarlighting.com)

Specifications and dimensions are subject to change without notice. For additional options and dimensional details, please consult your New Star Lighting representative.

© 2025, New Star Lighting. All rights reserved. Unauthorized duplication or distribution is prohibited.

## SPECIFICATIONS

**BACKPLATE:** Die-formed, seam welded and ground smooth marine grade aluminum.

**FRAME:** Die-formed, seam welded and ground smooth frame available in aluminum. Custom band options available, consult factory.

**LENS:** .125" White UV-stabilized polycarbonate lens for maximum diffusion.

**LED:** Available in four color temperatures 3000K, 3500K, 4000K, and 5000K. Other color temperatures available, consult factory. Minimum 50,000 hours with 70% lumen maintenance in a 25°C ambient temperature, compliant with IES LM-80 testing standards. Dimming options available on Power Enclosure.

**ELECTRICAL:** 120-277VAC, high-power factor power supply with EMI Filter (supplied by others).

**REMOTE POWER SUPPLY:** LED driver included - must be remote mount. Must order Power Supply separately on page 3. Consult factory for more information. MRI room EMI filter required, supplied by others.

**REFLECTOR:** Die-formed aluminum, removable and utilized with all electrical components for easy installation and maintenance.

**FASTENERS:** Stainless steel Philips flat head screws with captive cage nuts. Finish to match frame.

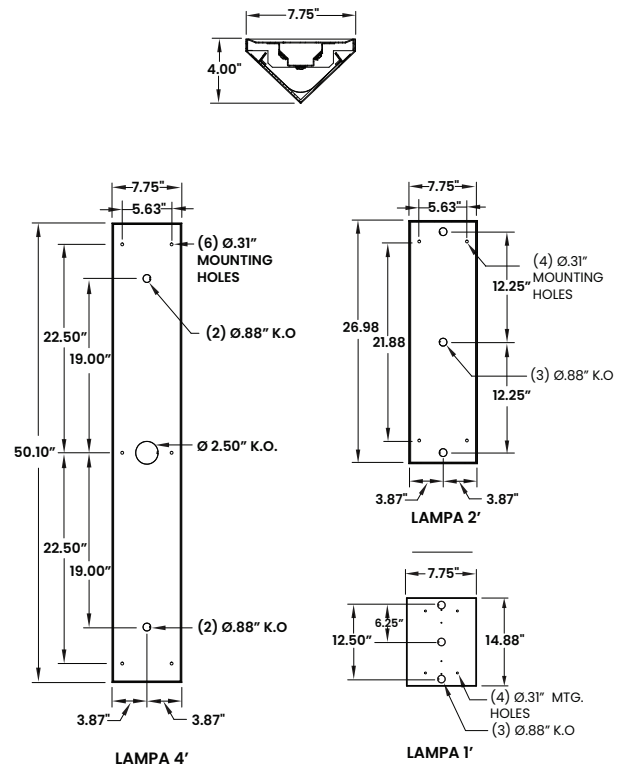
**FINISH:** Black PPG polyester textured paint or optional custom color. Please specify if custom color should include an anti-microbial finish.

**GASKET:** Black neoprene gasket around interior door frame to prevent water and dust infiltration.

**INSTALLATION:** Surface wall mount installation.

**LABEL:** Fixture is certified to UL Standards. Suitable for Wet Locations. ADA-Complaint. This product was Made in America and complies with the Buy American Act requirements

## DIMENSIONAL DATA



## PERFORMANCE DATA

\*LEDs are frequently updated therefore values may change without notice.

MODEL	OUTPUT	COLOR TEMP.	LUMENS DELIVERED	EFFICACY (lm/W)	INPUT POWER (W)
LAM1	L2 = Medium	4000K	650	58	12.5
	L3 = High	4000K	975	58	18.75
LAM2	L1 = Low	4000K	650	58	12.5
	L2 = Medium	4000K	1300	58	25
	L3 = High	4000K	1950	58	37.5
LAM4	L1 = Low	4000K	1300	58	25
	L2 = Medium	4000K	2600	58	50
	L3 = High	4000K	3900	58	75

## POWER ENCLOSURE ORDERING INFORMATION

Example: LAM1-PS-L2-1

LAM		PS			
Series	<b>Size*</b> 1 = 1ft 2 = 2ft 4 = 4ft  <small>*Nominal Size. Dimensional Data on Page 3.</small>	<b>PS = Power Supply*</b>  <small>*Up to 8 drivers can be in a Power Enclosure depending on quantity of fixtures ordered. Consult factory for custom configurations. Configurations must be determined at time of order.</small>	<b>Lumen Output*</b> <b>LAM1:</b> L2 = Standard L3 = Medium <b>LAM2-4:</b> L1 = Standard L2 = Medium L3 = High	<b>Drivers per Fixture*</b>  <small>*Please refer to the below chart. Requires proper filtration components by others. Each driver requires a filter.</small>	<b>Options</b> <b>DM = 0-10V dimming</b> with 10-100% range

## NUMBER OF DRIVERS PER FIXTURE

\*LEDs are frequently updated therefore values may change without notice.

MODEL	SIZE	OUTPUT	NUMBER OF DRIVERS PER FIXTURE
LAM	1 = 1ft	L2 = Medium	1
		L3 = High	1
	2 = 2ft	L1 = Low	1
		L2 = Medium	1
		L3 = High	1
	4 = 4ft	L1 = Low	1
		L2 = Medium	1
		L3 = High	1



**New Star Lighting**

2225 W Pershing Rd, Chicago, IL 60609  
 (773) 847-1400  
[www.newstarlighting.com](http://www.newstarlighting.com)

Specifications and dimensions are subject to change without notice. For additional options and dimensional details, please consult your New Star Lighting representative.

© 2025, New Star Lighting. All rights reserved. Unauthorized duplication or distribution is prohibited.