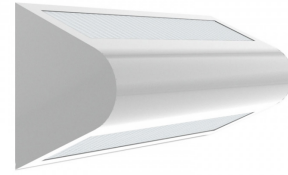


PROJECT: _____
 TYPE: _____
 PRODUCT: _____
 APPROVED BY: _____



RUD

PRODUCT FEATURES

- Intended for Minimum to Supermax Correctional Facilities, Detention Centers, Public Housing, Athletic Facilities, and Ligature-resistant features to support Behavioral Health applications
- Two-aperture bullnose clamshell for wall mount available in 1ft, 2ft, and 4ft
- Fixture is certified for Wet Locations (under covered ceiling) to UL Standards by Intertek Testing Laboratories
- This product is Made in America and complies with the Buy American Act requirements

ORDERING INFORMATION

Example: RUD2-B-LA401C-A/C-UN



RUD					
Series	Size* 1 = 1ft** 2 = 2ft 4 = 4ft *Nominal Size. Dimensional Data on Page 2. **RUD1 is only available with LA, LE and LF lumen output options.	Housing B = 14Ga. CRS Painted C = 16Ga. CRS Painted D = 18Ga. CRS Painted E = 14Ga. SS Brushed F = 16Ga. SS Brushed G = 18Ga. SS Brushed H = 14Ga. SS Painted J = 16Ga. SS Painted K = 18Ga. SS Painted	Lumen Output* LA = 1 Up/1 Down** LB = 1 Up/2 Down LC = 2 Up/2 Down LD = 2 Up/1 Down LE = 0 Up/1 Down** LF = 1 Up/0 Down** *Subject to change. Performance Data on Page 3. **Available with RUD1.	Color Temp. 35 = 3500K 40 = 4000K 50 = 5000K	Circuits 1 = 1 Circuit 2 = 2 Circuits* *Select 2C for Up/Down compartments to be independently circuited/controlled

Outer Lens 0 = No Lens A = .125 Clear Poly. B = .156 Clear Poly. 1 = .187 Clear Poly. 2 = .250 Clear Poly. 3 = .375 Clear Poly. 5 = .187 Clear Temp. Glass 6 = .250 Clear Temp. Glass 7 = .375 Clear Temp. Glass* 8 = .500 Clear Temp. Glass* 9 = .750 Clear Temp. Glass* *Must use with 14Ga.	Inner Lens A = .125 Prismatic Acrylic B = .125 Prismatic Poly. C = .156 Prismatic Poly. D = .187 Prismatic Poly. F = .156 Prismatic Acrylic G = .140 DR Acrylic LC3 = .125 White Frosted Poly.	Voltage 12 = 120V 27 = 277V 34 = 347V UN = Universal (120V - 277V)	Options FZ1 = Fuse (120V) FZ2 = Fuse (277V) LN = LED Night Light (3500K)* EL1 = Emerg. Bat. LED Low (10W)** EL2 = Emerg. Bat. LED Low (20W)** AH = Allen Head screws with center pin reject SR = Flush Button Switch on Right (120V) SL = Flush Botton Switch on Left (120V) AM = Antimicrobial finish on exposed surfaces CEL1 = CA Title 24 Emerg. Batt LED*** *3500K non-dimming Night Light with integrated switch allows light levels at 100%, 70%,40% and 10%. Located in "Down" compartment. **Illuminates "Down" compartment with integral test switch. If stored, batteries should be fully recharged every six months and kept between 0°C-25°C to maintain optimal battery capacity. ***Consult factory for options. Depending on options specified. Battery may need to be remote.
---	--	---	--

SPECIFICATIONS

HOUSING: Die-formed, seam welded, and ground smooth clamshell bullnose design in cold rolled steel or stainless steel. Incorporates a removable reflector unitized with all electrical components for easy installation and maintenance. Rounded housing shape designed to withstand physical abuse.

BACKPLATE: Die-formed with contraband drop slot and embossed mounting holes (material to match housing). Security caulking between ceiling and fixture is not required with this backplate design.

HINGE: 16-Gauge full length continuous, staked piano hinge with welded ends to prevent removal (material to match housing).

LENS: Outer and Inner lens options secured by "Z" retainers with weld studs spaced six inches apart for maximum strength.

LED: Available in three color temperatures 3500K, 4000K, and 5000K with maximum 3-step MacAdam variation allowance. Other color temperatures available, consult factory. Minimum 50,000 hours with 70% lumen maintenance in a 25°C ambient temperature, compliant with IES LM-80 testing standards.

ELECTRICAL: 120-277VAC or 347VAC, 50/60HZ electrical input high power factor electronic, constant current driver (<20% THD, >0.95 PF). Standard 0-10V Dimming with 1-100% range.

FASTENERS: Tamper-resistant Torx® head fasteners.

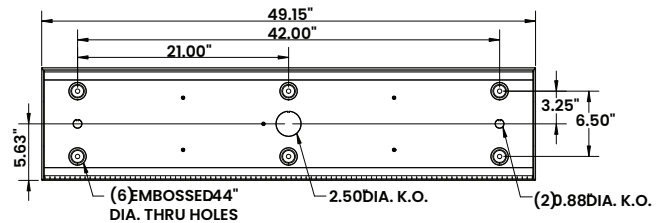
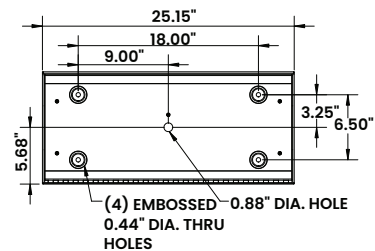
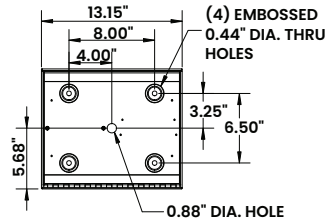
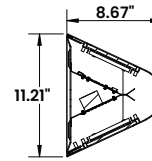
FINISH: White powder coat finish following multi-stage iron phosphate pre-treatment. Optional antimicrobial finish.

MOUNTING: Surface wall installation.

WARRANTY: New Star Promise.

LABEL: Fixture is certified for Wet Locations (under covered ceilings) to UL standards by Intertek Testing Laboratories. This product is Made in America and complies with the Buy American Act (BAA).

DIMENSIONAL DATA



The RUD Series is covered by our New Star Promise.

Our promise means we will repair or replace any of our High Abuse or Vandal-Resistant architectural luminaires when installed according to our instructions for the life of the original installation if the fixture should fail due to physical abuse*.

*Damage caused by gunfire and chemical reactions is not covered by the New Star Promise.

PERFORMANCE DATA

*Data is with 80 CRI chip at 4000K. LEDs are frequently updated therefore values may change without notice.

MODEL	OUTPUT	COLOR TEMP.	UP COMPARTMENT LUMENS DELIVERED	DOWN COMPARTMENT DELIVERED LUMENS	EFFICACY (lm/w)	INPUT POWER (W)
RUD1	LA = 1 Up/1 Down	4000K	2000	2000	110	25
	LE = 0 Up/1 Down	4000K	N/A	2000	110	12.5
	LF = 1 Up/0 Down	4000K	2000	N/A	110	12.5
RUD2	LA = 1 Up/1 Down	4000K	1375	1375	110	50
	LB = 1 Up/2 Down	4000K	1375	2750	110	75
	LC = 2 Up/2 Down	4000K	2750	2750	110	100
	LD = 2 Up/1 Down	4000K	2750	1375	110	75
	LE = 0 Up/1 Down	4000K	N/A	1375	110	25
	LF = 1 Up/0 Down	4000K	1375	N/A	110	25
RUD4	LA = 1 Up/1 Down	4000K	2750	2750	110	50
	LB = 1 Up/2 Down	4000K	2750	5500	110	75
	LC = 2 Up/2 Down	4000K	5500	5500	110	100
	LD = 2 Up/1 Down	4000K	5500	2750	110	75
	LE = 0 Up/1 Down	4000K	N/A	2750	110	25
	LF = 1 Up/0 Down	4000K	2750	N/A	110	25

