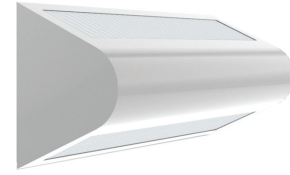


PROJECT: _____
 TYPE: _____
 PRODUCT: _____
 APPROVED BY: _____



RUD

PRODUCT FEATURES

- Intended for Minimum to Supermax Confinement, Psychiatric Wards, Public Housing, Detention Centers, Transportation, Athletic Facilities, and more
- This product is Made in America and complies with the Buy American Act requirements

ORDERING INFORMATION

Example: RUD2-B-LA401C-A/C-UN



RUD					
Series	Size* 1 = 1ft** 2 = 2ft 4 = 4ft *Nominal Size. Dimensional Data on Page 2. **RUD1 is only available with LA, LE and LF lumen output options.	Housing B = 14Ga. CRS Painted C = 16Ga. CRS Painted D = 18Ga. CRS Painted E = 14Ga. SS (Brushed) F = 16Ga. SS (Brushed) G = 18Ga. SS (Brushed) H = 14Ga. SS (Painted) J = 16Ga. SS (Painted) K = 18Ga. SS (Painted)	Lumen Output* LA = 1 Up/1 Down** LB = 1 Up/2 Down LC = 2 Up/2 Down LD = 2 Up/1 Down LE = 0 Up/1 Down** LF = 1 Up/0 Down** *Subject to change. Performance Data on Page 3. **Available with RUD1.	Color Temp. 35 = 3500K 40 = 4000K 50 = 5000K	Circuits* 1 = 1 Circuit 2 = 2 Circuits *Select 2C for Up/Down compartments to be independently circuited/controlled

Outer Lens 0 = No Lens A = .125 Clear Poly. B = .156 Clear Poly. 1 = .187 Clear Poly. 2 = .250 Clear Poly. 3 = .375 Clear Poly. 5 = .187 Clear Temp. Glass 6 = .250 Clear Temp. Glass 7 = .375 Clear Temp. Glass* 8 = .500 Clear Temp. Glass* 9 = .750 Clear Temp. Glass* *Must use with 14Ga.	Inner Lens A = .125 Prismatic Acrylic B = .125 Prismatic Poly. C = .156 Prismatic Poly. D = .187 Prismatic Poly. F = .156 Prismatic Acrylic G = .140 DR Acrylic LC3 = .125 White Frosted Poly.	Voltage 12 = 120V 27 = 277V 34 = 347V UN = Universal (120V - 277V)	Options DM = 0-10V dimming with 10-100% range DM1 = 0-10V dimming with 1-100% range EL1 = Emerg. Bat. LED Low (1100-1250 lm)* EL2 = Emerg. Bat. LED Low (1900-2000 lm)* FZ1 = Fuse (120V) FZ2 = Fuse (277V) LN = LED Night Light (3500K)** UV = .005 UV Absorbing Overlay AH = Allen head screws SR = Flush Button Switch on Right (120V) SL = Flush Button Switch on Left (120V) *Consult factory for CA Title 24 options. Illuminates "Down" compartment with integral test switch. **Integrated switch allows light levels at 100%, 70%, 40%, and 10% levels.
---	--	---	--

SPECIFICATIONS

HOUSING: Die formed, seam welded, and ground smooth cold rolled steel or stainless-steel clamshell design. Incorporates a removable reflector unitized with all electrical components for easy installation and maintenance. Angled housing shape designed to withstand physical abuse.

BACKPLATE: Die formed with contraband drop slot and embossed mounting holes (material to match housing). Security caulking between ceiling and fixture is not required with this backplate design.

GAUGE: 16-Gauge full length continuous, staked piano hinge with welded ends to prevent removal (material to match housing).

LENS: Outer and Inner lens options secured by "Z" retainers with welded studs spaced six inches apart for maximum strength.

LED: Available in three color temperatures 3500K, 4000K and 5000K with maximum 3-step MacAdam variation allowance. Other color temperatures available, consult factory. Minimum 80 CRI standard. 0-10V dimming available with 10-100% range and 1-100% range. Must specify dimming under options.

FASTENERS: Tamper-resistant Torx® head fasteners.

FINISH: White powder coat finish following iron phosphate pre-treatment.

GASKET: Black neoprene gasket around door frame to prevent light leaks.

MOUNTING: Surface installation. Hardware by others.

LABEL: Fixture is certified to UL Standards by Intertek Testing Laboratories.

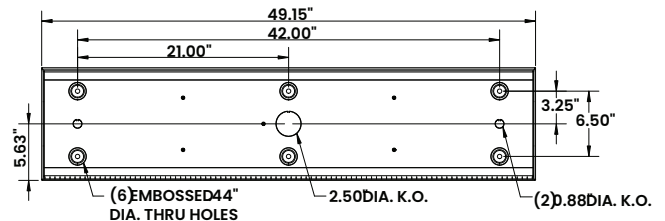
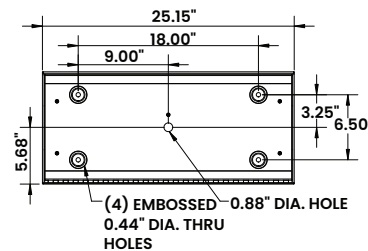
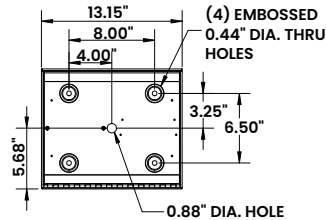
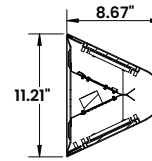


The RUD Series is covered by our New Star Promise.

Our promise means we will repair or replace any of our High Abuse or Vandal Resistant architectural luminaires when installed according to our instructions for the life of the original installation if the fixture should fail due to physical abuse.*

*Exclusions to the New Star Promise are gunfire and chemical reactions

DIMENSIONAL DATA



PERFORMANCE DATA

*Data is with 80 CRI chip at 4000K. LEDs are frequently updated therefore values may change without notice.

MODEL	OUTPUT	COLOR TEMP.	LUMENS DELIVERED	EFFICACY (lm/W)	INPUT POWER (W)
RUD1	LA = 1 Up/1 Down	4000K	2750	110	25
	LE = 0 Up/1 Down	4000K	1375	110	12.5
	LF = 1 Up/0 Down	4000K	1375	110	12.5
RUD2	LA = 1 Up/1 Down	4000K	5500	110	50
	LB = 1 Up/2 Down	4000K	8250	110	75
	LC = 2 Up/2 Down	4000K	11000	110	100
	LD = 2 Up/1 Down	4000K	8250	110	75
	LE = 0 Up/1 Down	4000K	2750	110	25
	LF = 1 Up/0 Down	4000K	2750	110	25
RUD4	LA = 1 Up/1 Down	4000K	5500	110	50
	LB = 1 Up/2 Down	4000K	8250	110	75
	LC = 2 Up/2 Down	4000K	11000	110	100
	LD = 2 Up/1 Down	4000K	8250	110	75
	LE = 0 Up/1 Down	4000K	2750	110	25
	LF = 1 Up/0 Down	4000K	2750	110	25

