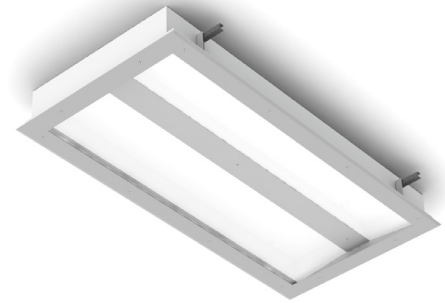


PROJECT: _____
 TYPE: _____
 PRODUCT: _____
 APPROVED BY: _____

PRODUCT FEATURES

- Intended for Cleanrooms, Hospitals, Hi-Tech Manufacturing, Laboratory, Food Processing Facilities, Commercial Kitchens, and more
- Architectural Cleanroom “V” troffer available in a 2x2 & 2x4
- Recessed ceiling mount; grid or flange. Compatible with 1.5” or 15/16” Grid Ceilings
- Fixture is certified to UL standards. Suitable for Wet Locations. IP65 Rated per IEC60598, Meets ISO Class 4 (Fed Std. 209E/ Class 10). IC-Rated per UL 1598
- This product is Made in America and complies with the Buy American Act, and the Build America, Buy America Act



SCV Series

ORDERING INFORMATION

Example: SCVR22-HC-L235-1C-A-UN



SCV	R				
Series	Mounting R = Recessed (Grid/Flange)	Size* 22 = 2x2 24 = 2x4 *Nominal Size. Dimensional Data on Page 2.	Housing HC = 20Ga. CRS Painted HS = 20Ga. SS Brushed HP = 20Ga. SS Painted HA = .050Ga. Alum. Painted	Lumen Output* L2 = Standard L4 = Medium L6 = High *Subject to change. Performance Data on Page 3.	Color Temp. 35 = 3500K 40 = 4000K 50 = 5000K *Subject to change. Performance Data on Page 3.

			VR-
Circuits 1C = 1 Circuit 2C = 2 Circuits *Allows for Inboard/ Outboard control.	Lens A = .125 Clear Acrylic B = .125 Clear Poly. C = .156 Clear Poly. D = .187 Clear Poly. E = .250 Clear Poly. *Inner lens is a .125 White Frosted Poly. for maximum diffusion.	Voltage 12 = 120V 27 = 277V 34 = 347V UN = Universal (120V-277V)	Options FZ1 = Fuse (120V) FZ2 = Fuse (277V) EL1 = Emerg. Bat. LED Low (10W)* EL2 = Emerg. Bat. LED High (20W)* LN = LED Night Light** IP66 = IP66 Rated (Overlapping frame only) 90C = 90 CRI *If stored, batteries should be fully recharged every six months and kept between 0°C-25°C to maintain optimal battery capacity. **3500K non-dimming Night Light with integrated switch allows light levels at 100%, 70%, 40% and 10%.

SPECIFICATIONS

HOUSING: 20-Gauge formed cold rolled steel housing with continuous seam welds. Aluminum and stainless steel options available. Overlapping frame to match housing material.

LENS: .125" White frosted acrylic inner lens. Options for outer lens includes clear acrylic or polycarbonate.

LED: Available in three color temperatures 3500K, 4000K, and 5000K with maximum 3-step MacAdam variation allowance. Other color temperatures available, consult factory. Minimum 50,000 hours with 70% lumen maintenance in an ambient environment 25°C temperature, compliant with IES LM-80 testing data. Minimum 80 CRI standard with optional minimum 90 CRI available.

ELECTRICAL: 120-277Vac 50/60Hz, constant current driver (<20% THD, >0.9 PF). Standard 0-10V Dimming with 1-100% range.

FINISH: White antimicrobial powder coat finish following multi-stage iron phosphate pre-treatment.

GASKET: Closed cell EPDM and closed cell silicone gaskets air contaminations from entering the fixture.

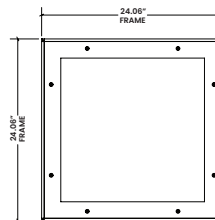
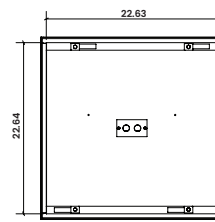
INSTALLATION: Universal recessed mounting accommodates Grid and Flange installations. Luminaires will be supplied with adjustable swing arms that can be used for Flange applications or secured to the side of housing for Grid applications. Compatible with 1-1/2" and 15/16" Grid systems. Mounting for custom ceilings available, consult factory.

WARRANTY: 5 Year Warranty.

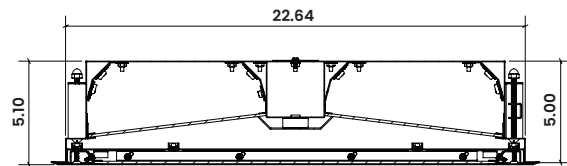
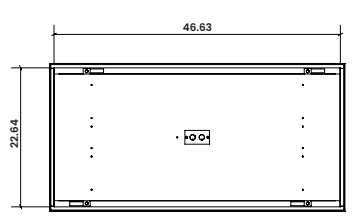
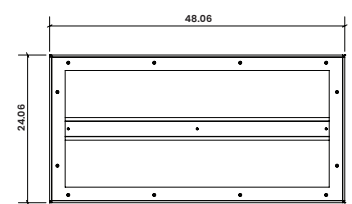
LABEL: Fixture is certified to UL standards. Suitable for Wet Locations, IP65 Rated per IEC60598, Meets ISO Class 4 (Fed Std. 209E/ Class 10). IC-Rated per UL 1598.

DIMENSIONAL DATA

SCV22



SCV24



PERFORMANCE DATA*

*LEDs are frequently updated therefore values may change without notice.

MODEL	OUTPUT	COLOR TEMP.	LUMENS DELIVERED	EFFICACY (lm/W)	INPUT POWER (W)
SCV22	L2 = Low	3500K	1975	79	25
		4000K	2075	83	25
		5000K	2200	88	25
	L4 = Medium	3500K	3850	77	50
		4000K	4050	81	50
		5000K	4250	85	50
	L6 = High	3500K	5880	84	70
		4000K	6230	89	70
		5000K	6650	95	70
SCV24	L2 = Low	3500K	4800	96	50
		4000K	5100	102	50
		5000K	5350	107	50
	L4 = Medium	3500K	9400	94	100
		4000K	9900	99	100
		5000K	10400	104	100
	L6 = High	3500K	14400	96	150
		4000K	15300	102	150
		5000K	16050	107	150

