

PROJECT: \_\_\_\_\_

TYPE: \_\_\_\_\_

PRODUCT: \_\_\_\_\_

APPROVED BY: \_\_\_\_\_

PRODUCT FEATURES

- Intended for Fall Prevention in healthcare settings, including Patient Rooms, Patient Bathrooms, Corridors, Lobbies, Waiting Rooms, Nurses’ Stations, and more
- Faceplate constructed of durable cast zinc-magnesium and features integral embedded driver (5W max.)
- 3 Face plates styles: horizontal louver, horizontal hood and smooth lens
- Available in 3000K White, Amber & Blue LED
- UL Certified for Wet Location, IP65 certified per IEC60598
- This product was Made in America and complies with the Buy American Act (BAA) requirements



SNL Series

ORDERING INFORMATION

Example: SNL3-OF-L-32-12-W



SNL3			L	
Series	Faceplate OF = Open HL = Horizontal Louver HH = Horizontal Hood	Size* 22 = 2x2 24 = 2x4  *Nominal Size. Dimensional Data on Page 2.	Source L = LED	Color Temp. 30 = 3000K A = Amber B = Blue

Voltage 12 = 120V 27 = 277V	Finish W = White DB = Dark Bronze BN = Brushed Nickel	Options HB = Hanger Bars TH = Tamper-resistant Torx® head fasteners

## SPECIFICATIONS

**FACEPLATE:** Durable cast zinc-magnesium in three styles: horizontal hood, open frame with diffused opal lens, or horizontal louver.

**LENS:** .125" White acrylic lens.

**LED:** Available in 3000K, Amber or Blue LED with maximum 3-step MacAdam variation allowance. Other color temperatures available, consult factory. Minimum 50,000 hours with 70% lumen maintenance in a 25°C ambient temperature, compliant with IES LM-80 testing standards.

**ELECTRICAL:** 120VAC or 277VAC 50/60HZ integrated, embedded Driver Max @ 5 watt 3.6 watt normal.

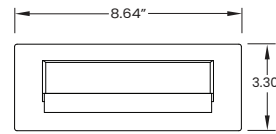
**FINISH:** White or Dark Bronze antimicrobial powder coat finish following multi-stage iron phosphate pretreatment on all exposed room-side painting surfaces, unless otherwise specified. Brushed Nickel is also available.

**INSTALLATION:** Recessed with Integral backbox.

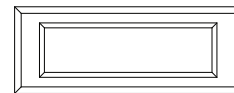
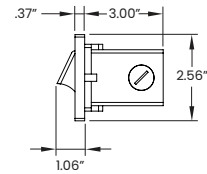
**WARRANTY:** 5 Year Warranty.

**LABEL:** UL Certified for Wet Location, IP65 certified per IEC60598.

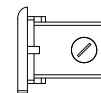
## DIMENSIONAL DATA



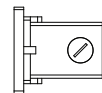
**HORIZONTAL HOOD**



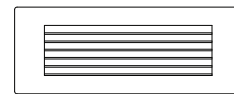
**OPEN FRAME WITH  
DIFFUSED OPAL LENS**



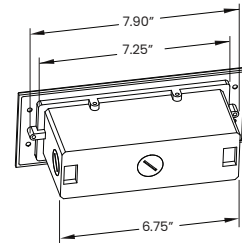
**OPEN FRAME WITH  
DIFFUSED OPAL LENS**



**HORIZONTAL LOUVER**



**HORIZONTAL LOUVER**



**New Star Lighting**

2225 W Pershing Rd, Chicago, IL 60609  
(773) 847-1400  
www.newstarlighting.com

Specifications and dimensions are subject to change without notice. For additional options and dimensional details, please consult your New Star Lighting representative.

© 2024, New Star Lighting. All rights reserved. Unauthorized duplication or distribution is prohibited.