

PROJECT: \_\_\_\_\_  
 TYPE: \_\_\_\_\_  
 PRODUCT: \_\_\_\_\_  
 APPROVED BY: \_\_\_\_\_



STWL

## PRODUCT FEATURES

- Intended for Corridors, Hallways, Lobbies, and more
- Surface mount linear fixture available in 2ft and 4ft
- Cold rolled steel low-profile housing
- Frosted polycarbonate lens for even light distribution
- This product is Made in America and complies with the Buy American Act requirements

## ORDERING INFORMATION

Example: STWL2-T-L2L35-UN



STWL		T		
<b>Series</b>	<b>Nominal Size</b> 2 = 2ft 4 = 4ft  *Nominal size. Dimensional Data on Page 2.	<b>Style</b>	<b>Lumen Output*</b> LWL = Low** L2 = Standard  *Subject to change. Performance Data on Page 3. **L2L for STWL4 only.	<b>Color Temp.</b> 35 = 3500K 40 = 4000K 50 = 5000K

<b>Voltage</b> 34 = 347V UN = Universal (120V-277V)	<b>Options</b> EL1 = Emergency Battery Low (800-1200lm)* EL2 = Emergency Battery High (1600-2000lm)* OC = Internal Occupancy Sensor SD2 = Step Dimming (50% - 100%)** SD3 = Step Dimming (30% - 70% - 100%*** PH = Phillips Head Screw  *Emerg Battery requires additional back box (must specify). Has integral push button test switch located on back box. **Consult factory for 347V. If SD2 and OC are ordered together, fixture operates at 50% when area is unoccupied. Fixture increases to 100% after motion is detected and reverts to 50% after time delay (set by user). ***Consult factory for 347V. If SD3 and OC are ordered together, SD3 will be set at lowest dimming level unless otherwise specified. Fixture operates at 30% when area is unoccupied. Fixture increases to 100% after motion is detected and reverts to 30% after time delay (set by user). Consult factory for different configurations.	<b>Accessory</b> BB = Back Box* CM = Corner Mount Bracket  *Required for Emergency Battery.
---	--	---

## SPECIFICATIONS

**CONSTRUCTION:** 22-Gauge cold rolled steel internally reinforced housing.

**LENS:** .10" Linear prismatic frosted UV-stabilized polycarbonate lens for even light distribution.

**LED:** Available in three color temperatures 3500K, 4000K and 5000K with maximum 3-step MacAdam variation allowance. Other color temperatures available, consult factory.

**ELECTRICAL:** 0-10V Dimming available with 1-100% range.

**REFLECTOR:** 22 -Gauge cold rolled steel in high reflective white finish.

**FASTENERS:** Tamper resistant Torx® head screws with center pin reject. Optional Phillips screws available.

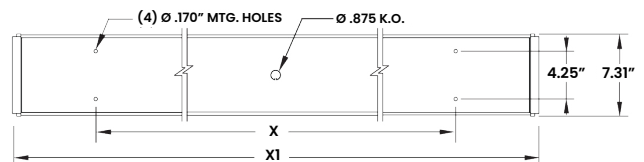
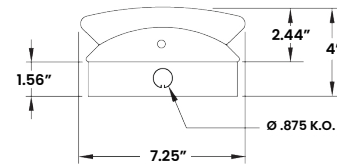
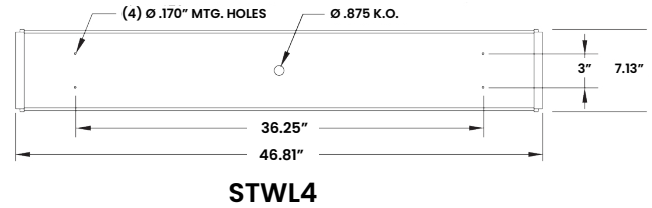
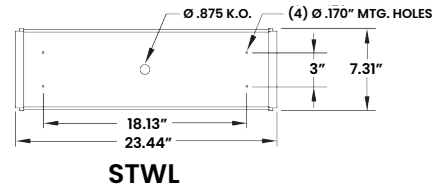
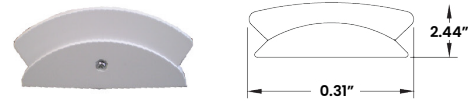
**FINISH:** White powder coat finish following multistage iron phosphate pretreatment.

**INSTALLATION:** Surface wall mount installation. J-Box and hardware by others.

**WARRANTY:** New Star Promise.

**LABEL:** Fixture is certified to UL standards by Intertek Testing Laboratory for Damp Locations

## DIMENSIONAL DATA



The Stairwell Series is covered by our New Star Promise.

Our promise means we will repair or replace any of our High Abuse or Vandal-Resistant architectural luminaires when installed according to our instructions for the life of the original installation if the fixture should fail due to physical abuse\*.

\*Damage caused by gunfire and chemical reactions is not covered by the New Star Promise.

## PERFORMANCE DATA

\*LEDs are frequently updated therefore values may change without notice.

MODEL	OUTPUT	COLOR TEMP.	LUMENS DELIVERED	EFFICACY (lm/W)	INPUT POWER (W)
STWL2	L2 = Standard	4000K	1500	100	15
STWL4	L2L = Low	4000K	3440	86	40
	L2 = Standard	4000K	5160	86	60