

PROJECT: _____
 TYPE: _____
 PRODUCT: _____
 APPROVED BY: _____



STWL

PRODUCT FEATURES

- Intended for Corridors, Hallways, Lobbies, and more
- Surface mount linear fixture available in 2ft and 4ft
- Cold rolled steel low-profile housing
- Frosted polycarbonate lens for even light distribution
- This product is Made in America and complies with the Buy American Act requirements

ORDERING INFORMATION

Example: STWL2-T-L2L35-UN



STWL		T		
Series	Nominal Size 2 = 2ft 4 = 4ft *Nominal size. Dimensional Data on Page 2.	Style	Lumen Output* LWL = Low** L2 = Standard *Subject to change. Performance Data on Page 3. **L2L for STWL4 only.	Color Temp. 35 = 3500K 40 = 4000K 50 = 5000K

Voltage 34 = 347V UN = Universal (120V-277V)	Options EL1 = Emergency Battery Low (800-1200lm)* EL2 = Emergency Battery High (1600-2000lm)* OC = Internal Occupancy Sensor SD2 = Step Dimming (50% - 100%)** SD3 = Step Dimming (30% - 70% - 100%*** PH = Phillips Head Screw *Emerg Battery requires additional back box (must specify). Has integral push button test switch located on back box. **Consult factory for 347V. If SD2 and OC are ordered together, fixture operates at 50% when area is unoccupied. Fixture increases to 100% after motion is detected and reverts to 50% after time delay (set by user). ***Consult factory for 347V. If SD3 and OC are ordered together, SD3 will be set at lowest dimming level unless otherwise specified. Fixture operates at 30% when area is unoccupied. Fixture increases to 100% after motion is detected and reverts to 30% after time delay (set by user). Consult factory for different configurations.	Accessory BB = Back Box* CM = Corner Mount Bracket *Required for Emergency Battery.
---	--	---

SPECIFICATIONS

CONSTRUCTION: 22-Gauge cold rolled steel internally reinforced housing.

LENS: .10" Linear prismatic frosted UV-stabilized polycarbonate lens for even light distribution.

LED: Available in three color temperatures 3500K, 4000K and 5000K with maximum 3-step MacAdam variation allowance. Other color temperatures available, consult factory.

ELECTRICAL: 0-10V Dimming available with 1-100% range.

REFLECTOR: 22 -Gauge cold rolled steel in high reflective white finish.

FASTENERS: Tamper resistant Torx® head screws with center pin reject. Optional Phillips screws available.

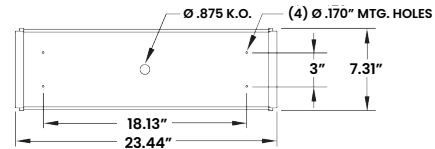
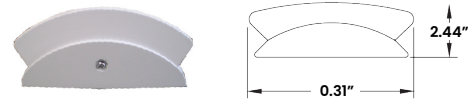
FINISH: White powder coat finish following multistage iron phosphate pretreatment.

INSTALLATION: Surface wall mount installation. J-Box and hardware by others.

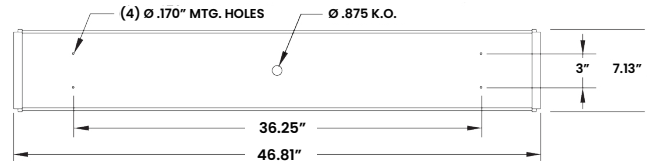
WARRANTY: New Star Promise.

LABEL: Fixture is certified to UL standards by Intertek Testing Laboratory for Damp Locations

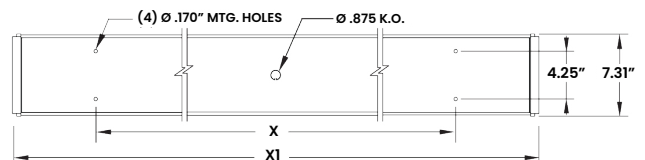
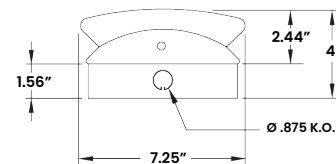
DIMENSIONAL DATA



STWL



STWL4



The StairWell Series is covered by our New Star Promise.

Our promise means we will repair or replace any of our High Abuse or Vandal Resistant architectural luminaires when installed according to our instructions for the life of the original installation if the fixture should fail due to physical abuse.*

*Exclusions to the New Star Promise are gunfire and chemical reactions

PERFORMANCE DATA

*LEDs are frequently updated therefore values may change without notice.

MODEL	OUTPUT	COLOR TEMP.	LUMENS DELIVERED	EFFICACY (lm/W)	INPUT POWER (W)
STWL2	L2 = Standard	4000K	1500	100	15
STWL4	L2L = Low	4000K	3440	86	40
	L2 = Standard	4000K	5160	86	60

