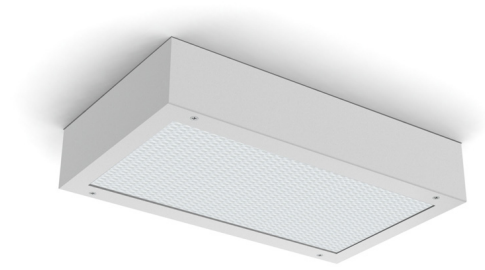


PROJECT: _____
 TYPE: _____
 PRODUCT: _____
 APPROVED BY: _____

PRODUCT FEATURES

- Intended for Correctional, Detention Centers, High Abuse, Max to Supermax Security, Public Areas, Public Housing, Warehouses, and more
- Available in 2ft and 4ft
- Fixture is certified to UL standards by Intertek Testing Laboratory
- This product is Made in America and complies with the Buy American Act (BAA)



UMW

ORDERING INFORMATION

Example: **UMW4-C-L2501C-4/E-UN**



UM	W					
Series	Style W = Wide	Size* 2 = 2ft 4 = 4ft *Nominal Size. Dimensional Data on Page 2	Gauge A = 12Ga. CRS Painted B = 14Ga. CRS Painted C = 16Ga. CRS Painted D = 18Ga. CRS Painted E = 14Ga. SS Brushed F = 16Ga. SS Brushed G = 18Ga. SS Brushed H = 14Ga. SS Painted J = 16Ga. SS Painted	Lumen Output* L2 = Low L3 = High *Subject to change. Performance Data on Page 3.	Color Temp. 35 = 3500K 40 = 4000K 50 = 5000K	Circuits 1C = 1 Circuit 2C = 2 Circuits

Outer Lens 0 = No Lens 1 = .187 Clear Poly. 2 = .250 Clear Poly. 3 = .375 Clear Poly. 4 = .500 Clear Poly. 5 = .187 Clear Temp Glass 6 = .250 Clear Temp. Glass 7 = .375 Clear Temp. Glass* 8 = .500 Clear Temp. Glass* 9 = .750 Clear Temp. Glass* *Must use with 12Ga. or 15Ga.	Inner Lens A = .125 Prismatic Acrylic B = .125 Prismatic Poly. C = .156 Prismatic Poly. D = .187 Prismatic Poly. F = .156 Prismatic Acrylic G = .140 DR Acrylic LC3 = .125 White Frosted Poly.	Voltage 12 = 120V 27 = 277V 34 = 347V UN = Universal (120V-277V) *Nominal Size. Dimensional Data on Page 2	Options DM = 0-10V dimming with 10-100% range DMI = 0-10V dimming with 1-100% range FZ = Fuse (120V) FZ1 = Fuse (277V) EL1 = Emerg. Bat. LED Low (1100-1250 lm)* EL2 = Emerg. Bat. LED High (1900-2000 lm)* AH = Allenhead Screws with Center Pin Reject LN = LED Night Light** *Consult factory for the CA Title 24 options. **3500K Night Light with integrated switch allows light levels at 100%, 70%, 40% and 10%.
---	--	--	--

SPECIFICATIONS

HOUSING: Die formed, seam welded, and ground smooth cold rolled steel or stainless steel clamshell housing. Incorporates a removable reflector unitized with all electrical components for easy installation and maintenance.

BACKPLATE: Die formed with contraband drop slot and embossed mounting holes (material and gauge to match housing). Security caulking between ceiling and fixture is not required with this backplate design.

HINGE: 16-Gauge full length continuous staked piano hinge with welded ends to prevent removal (material to match housing).

LENS/LENS RETAINER: Outer and inner lens options secured

LED: Available in three color temperatures 3500K, 4000K, and 5000K with maximum 3-step MacAdam variation allowance. Other color temperatures available, consult factory. Minimum 80 CRI standard. 0-10V dimming available with 10-100% range and 1-100% range. Must specify dimming under options.

GASKET: Black neoprene gasket around door frame to prevent light leaks.

FASTENERS: Tamper-resistant Torx® head fasteners with center pin reject.

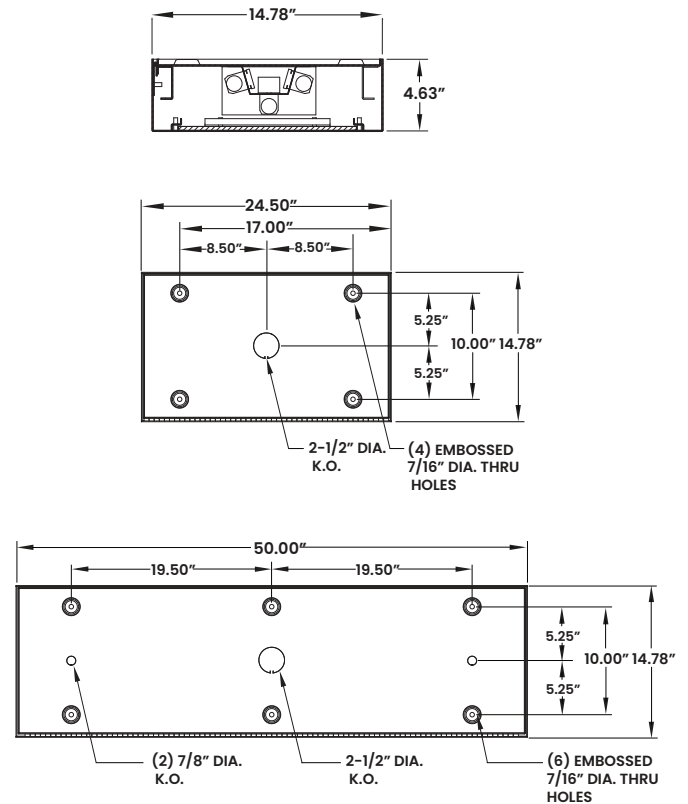
FINISH: White powder coat finish following a multistage iron phosphate pre-treatment.

MOUNTING: Surface installation. Hardware by others.

WARRANTY: New Star Promise.

LABEL: Fixture is certified to UL standards.

DIMENSIONAL DATA



The UMW Series is covered by our New Star Promise.

Our promise means we will repair or replace any of our High Abuse or Vandal Resistant achirctural luminaires when installed according to our instructions for the life of the original installation if the fixture should faile due to physical abuse.*

*Exclusions to the New Star Promise are gunfire and chemical reactions

PERFORMANCE DATA*

MODEL	OUTPUT	COLOR TEMP.	LUMENS DELIVERED	EFFICACY (lm/W)	INPUT POWER (W)
UMW2	Low (L2)	4000K	2750	110	25
	High (L3)	4000K	4125	110	37.5
UMW4	Low (L2)	4000K	5500	110	50
	High (L3)	4000K	8250	110	75