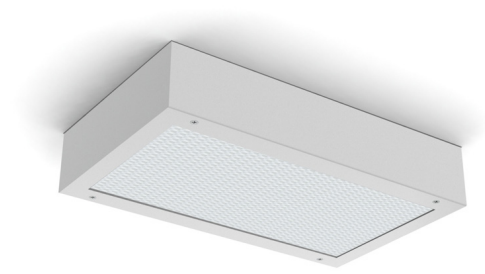


PROJECT: \_\_\_\_\_  
 TYPE: \_\_\_\_\_  
 PRODUCT: \_\_\_\_\_  
 APPROVED BY: \_\_\_\_\_

## PRODUCT FEATURES

- Intended for Maximum to Supermax Correctional Facilities, Detention Centers, Public Housing Complexes, Athletic Facilities, and more
- 2ft. and 4ft. Surface clamshell in wide housing design with contraband drop slot between ceiling and back of luminaire
- Inner and outer lens secured by "Z" bracket retention system with 6" stud spacing for maximum strength
- This product is Made in America and complies with the Buy American Act (BAA)



UMW

## ORDERING INFORMATION

Example: UMW4-C-L2501C-4/E-UN



UM	W					
<b>Series</b>	<b>Style</b> W = Wide	<b>Size*</b> 2 = 2ft 4 = 4ft  *Nominal Size. Dimensional Data on Page 2	<b>Housing</b> A = 12Ga. CRS Painted B = 14Ga. CRS Painted C = 16Ga. CRS Painted D = 18Ga. CRS Painted E = 14Ga. SS Brushed F = 16Ga. SS Brushed G = 18Ga. SS Brushed H = 14Ga. SS Painted J = 16Ga. SS Painted	<b>Lumen Output*</b> L2 = Low L3 = High  *Subject to change. Performance Data on Page 3.	<b>Color Temp.</b> 35 = 3500K 40 = 4000K 50 = 5000K	<b>Circuits</b> 1C = 1 Circuit 2C = 2 Circuits

<b>Outer Lens</b> 0 = No Lens 1 = .187 Clear Poly. 2 = .250 Clear Poly. 3 = .375 Clear Poly. 4 = .500 Clear Poly. 5 = .187 Clear Temp Glass 6 = .250 Clear Temp. Glass 7 = .375 Clear Temp. Glass* 8 = .500 Clear Temp. Glass* 9 = .750 Clear Temp. Glass*  *Must use with 12Ga. or 15Ga.	<b>Inner Lens</b> A = .125 Prismatic Acrylic B = .125 Prismatic Poly. C = .156 Prismatic Poly. D = .187 Prismatic Poly. F = .156 Prismatic Acrylic G = .140 DR Acrylic LC3 = .125 White Frosted Poly.	<b>Voltage</b> 12 = 120V 27 = 277V 34 = 347V UN = Universal (120V-277V)  *Nominal Size. Dimensional Data on Page 2	<b>Options</b> FZ = Fuse (120V) FZ1 = Fuse (277V) LN = LED Night Light* EL1 = Emerg. Bat. LED Low (1100-1250 lm)** EL2 = Emerg. Bat. LED High (1900-2000 lm)** WL = Wet Location (under cover ceiling) AH = Allenhead Screws with Center Pin Reject  *3500K. Non-dimming. Integrated switch allows light levels at 100%, 70%, 40% and 10% levels. **If stored, batteries should be fully recharged every six months and kept between 0°C-25°C to maintain optimal battery capacity
---	--	---	--

## SPECIFICATIONS

**HOUSING:** Die-formed, seam welded, and ground smooth surface mount clamshell design in cold rolled steel or stainless steel. Incorporates a removable reflector unitized with all electrical components for easy installation and maintenance.

**BACKPLATE:** Die-formed with contraband drop slot and embossed mounting holes (material and gauge to match housing). Security caulking between ceiling and fixture is not required with this backplate design.

**HINGE:** 16-Gauge full length continuous staked piano hinge with welded ends to prevent removal (material to match housing).

**LENS/LENS RETAINER:** Outer and inner lens options secured with "Z" retainers with welded studs spaced six inches apart for maximum strength.

**LED:** Available in three color temperatures 3500K, 4000K, and 5000K with maximum 3-step MacAdam variation allowance. Other color temperatures available, consult factory. Minimum 50,000 hours with 70% lumen maintenance in a 25°C ambient temperature, compliant with IES LM-80 testing standards.

**ELECTRICAL:** 120-277VAC or 347VAC, 50/60HZ electrical input high power factor electronic, constant current driver (<20% THD, >0.95 PF). Standard 0-10V Dimming with 1-100% range.

**GASKET:** Black neoprene gasket around door frame to prevent light leaks.

**FASTENERS:** Tamper-resistant Torx® head fasteners with center pin reject.

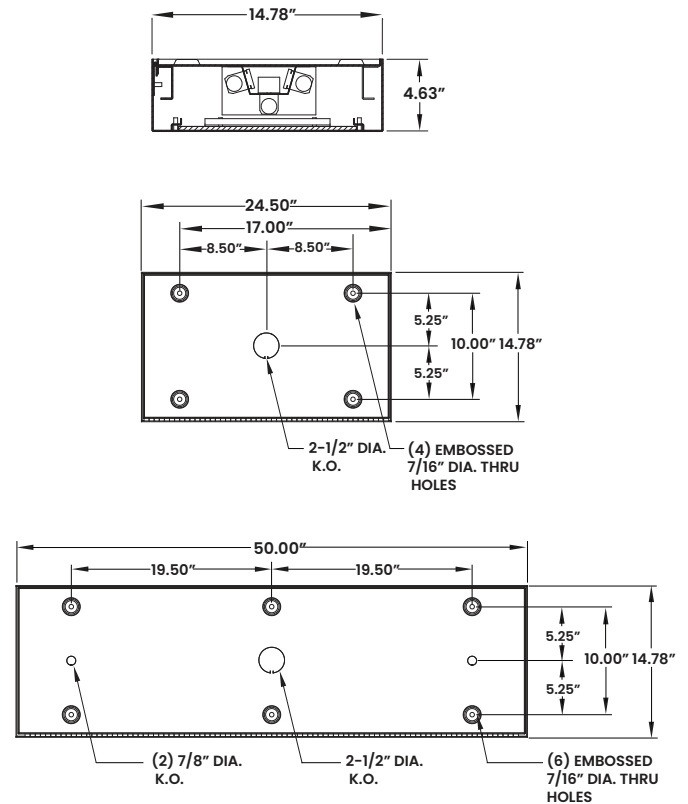
**FINISH:** White powder coat finish following a multistage iron phosphate pre-treatment.

**MOUNTING:** Surface installation. Hardware by others.

**WARRANTY:** New Star Promise.

**LABEL:** Fixture is certified to UL standards. Optional Wet Location listing. This product is Made in America and complies with the Buy American Act (BAA).

## DIMENSIONAL DATA



The UMW Series is covered by our New Star Promise.

Our promise means we will repair or replace any of our High Abuse or Vandal-Resistant architectural luminaires when installed according to our instructions for the life of the original installation if the fixture should fail due to physical abuse\*.

\*Damage caused by gunfire and chemical reactions is not covered by the New Star Promise.

## PERFORMANCE DATA\*

MODEL	OUTPUT	COLOR TEMP.	LUMENS DELIVERED	EFFICACY (lm/W)	INPUT POWER (W)
UMW2	L2 = Low	4000K	2750	110	25
	L3 = High	4000K	4125	110	37.5
UMW4	L2 = Low	4000K	5500	110	50
	L3 = High	4000K	8250	110	75

