

53 SERIES LED

5311/5312/5314/5322/5324

SPECIFICATION FEATURES

HOUSING: Die formed, seam welded, and ground smooth cold rolled steel or stainless steel non-clamshell design. Incorporates a removable reflector unitized with all electrical components for easy installation and maintenance.

FRAME: Die formed one-piece frame with tightly closed corners. Material and gauge to match housing.

LENS: Outer and inner lens options secured by "Z" retainers with weld studs spaced six inches apart for maximum strength.

LED: Available in three color temperatures 3500°K, 4000°K, and 5000°K with maximum 3-step MacAdam variation allowance. Other color temperatures available, consult factory. Minimum 80 CRI standard with optional minimum 90 CRI available. 0-10V dimming available with 10-100% range and 1-100% range. Must specify dimming under options.

FASTENERS: Tamper resistant countersunk flat head Torx screws with center pin reject.

FINISH: White powder coat finish following multistage iron phosphate pre-treatment.

ORDERING INFORMATION

Example: 5322-A-L2351C-B/A-UN

| SERIES | SIZE* | HOUSING | LUMEN OUTPUT* | COLOR TEMP. | CIRCUITS |
|--------|----------|------------------------|-----------------|-------------|-----------------|
| 53 | | | | | |
| | 11 = 1x1 | A = 12Ga. CRS Painted | 5311: | 35 = 3500°K | 1C = 1 Circuit |
| | 12 = 1x2 | B = .14Ga. CRS Painted | L1 = Standard | 40 = 4000°K | 2C = 2 Circuits |
| | 14 = 1x4 | C = 16Ga. CRS Painted | L2 = Medium | 50 = 5000°K | |
| | 22 = 2x2 | D = 18Ga. CRS Painted | 5312-14: | | |
| | 24 = 2x4 | E = 14Ga. SS Brushed | L2 = Standard | | |
| | | F = 16Ga. SS Brushed | L3 = Medium | | |
| | | G = 18Ga. SS Brushed | 5322: | | |
| | | H = 14Ga. SS Painted | L2 = Low | | |
| | | J = 16Ga. SS Painted | L4 = Standard | | |
| | | K = 18Ga. SS Painted | L6 = Medium | | |
| | | | 5324: | | |
| | | | L2 = Low | | |
| | | | L4 = Standard | | |
| | | | L6 = Medium | | |
| | | | L8 = High | | |

*Nominal Size.
Dimensional
Data on Page 2

*Subject to change. Data on Page 2.

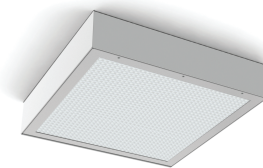
| OUTER LENS | INNER LENS | VOLTAGE | OPTIONS |
|-----------------------------------|-----------------------------------|----------------|---|
| 0 = No Lens | A = .125 Prismatic Acrylic | 12 = 120V | DM = 0-10V dimming with 10-100% range |
| A = .125 Clear Poly. | B = .125 Prismatic Poly. | 27 = 277V | DM1 = 0-10V dimming with 1-100% range |
| B = .156 Clear Poly. | C = .156 Prismatic Poly. | 34 = 347V | EL1 = Emerg. Bat. LED Low (1100-1250 lm) |
| 1 = .187 Clear Poly. | D = .187 Prismatic Poly. | UN = Universal | EL2 = Emerg. Bat. LED High (1900-2000 lm) |
| 2 = .250 Clear Poly. | E = .156 Prismatic Temp. Glass | (120V-277V) | FZ1 = Fuse (120V) |
| 3 = .375 Clear Poly. | F = .156 Prismatic Acrylic | | FZ2 = Fuse (277V) |
| 4 = .500 Clear Poly. | G = .140 DR Prismatic Acrylic | | WL = Wet Location |
| 5 = .187 Clear Temp. Glass | LC3 = .125 White Frosted Poly. ** | | LN = LED Night Night* |
| 6 = .250 Clear Temp. Glass | | | UV = .005 UV Absorbing Overlay |
| 7 = .375 Clear Temp. Glass* | **N/A for 5312-14 | | QD = Quick Disconnect |
| 8 = .500 Clear Temp. Glass* | | | AH = Allen head screws with center pin reject |
| 9 = .750 Clear Temp. Glass* | | | |
| LC3 = .125 White Frosted Poly. ** | | | |

*Integrated switch allows light levels at 100%, 70%, 40%, and 10% levels.

*Must use with 12Ga. or 14Ga.

**N/A for 5322-24.

Notes:
This product is Made in America and complies with the Buy American Act requirements. Specifications and Dimensions are subject to change without notice. For additional options and dimensional details please consult your New Star Lighting Rep.



5322

APPLICATIONS: Minimum to Supermax Confinement, Behavioral Health Settings, Public Housing, Detention Centers, Transportation, Athletic Facilities, and more.

MOUNTING: Surface installation.

LABEL: Fixture is certified to UL standards.



PERFORMANCE DATA*

| MODEL | OUTPUT | COLOR TEMP. | LUMENS DELIVERED | EFFICACY (lm/W) | INPUT POWER (W) |
|-------|---------------|-------------|------------------|-----------------|-----------------|
| 5311 | Standard (L1) | 3500°K | 1450 | 90 | 15 |
| | | 4000°K | 1500 | 100 | 15 |
| | | 5000°K | 1560 | 104 | 15 |
| | Medium (L2) | 3500°K | 3300 | 110 | 30 |
| | | 4000°K | 3450 | 115 | 30 |
| | | 5000°K | 3900 | 130 | 30 |
| 5312 | Standard (L2) | 3500°K | 2875 | 115 | 25 |
| | | 4000°K | 3000 | 120 | 25 |
| | | 5000°K | 3125 | 125 | 25 |
| | Medium (L3) | 3500°K | 4180 | 110 | 38 |
| | | 4000°K | 4370 | 115 | 38 |
| | | 5000°K | 4560 | 120 | 38 |
| 5314 | Standard (L2) | 3500°K | 5750 | 115 | 50 |
| | | 4000°K | 6000 | 120 | 50 |
| | | 5000°K | 6250 | 125 | 50 |
| | Medium (L3) | 3500°K | 8250 | 110 | 75 |
| | | 4000°K | 8625 | 115 | 75 |
| | | 5000°K | 9000 | 120 | 75 |
| 5322 | Low (L2) | 3500°K | 3000 | 120 | 25 |
| | | 4000°K | 3125 | 125 | 25 |
| | | 5000°K | 3250 | 130 | 25 |
| | Standard (L4) | 3500°K | 6000 | 120 | 50 |
| | | 4000°K | 6250 | 125 | 50 |
| | | 5000°K | 6500 | 130 | 50 |
| | Medium (L6) | 3500°K | 8650 | 115 | 75 |
| | | 4000°K | 9000 | 120 | 75 |
| | | 5000°K | 9375 | 125 | 75 |
| 5324 | Low (L2) | 3500°K | 6000 | 120 | 50 |
| | | 4000°K | 6250 | 125 | 50 |
| | | 5000°K | 6500 | 130 | 50 |
| | Standard (L4) | 3500°K | 12000 | 120 | 100 |
| | | 4000°K | 12500 | 125 | 100 |
| | | 5000°K | 13000 | 130 | 100 |
| | Medium (L6) | 3500°K | 17250 | 115 | 150 |
| | | 4000°K | 18000 | 120 | 150 |
| | | 5000°K | 18750 | 125 | 150 |
| | High (L8) | 3500°K | 23000 | 115 | 200 |
| | | 4000°K | 24000 | 120 | 200 |
| | | 5000°K | 25000 | 125 | 200 |

*LEDs are frequently updated therefore values may change without notice.
Visit www.newstarlighting.com for additional information and IES files.

53 SERIES LED

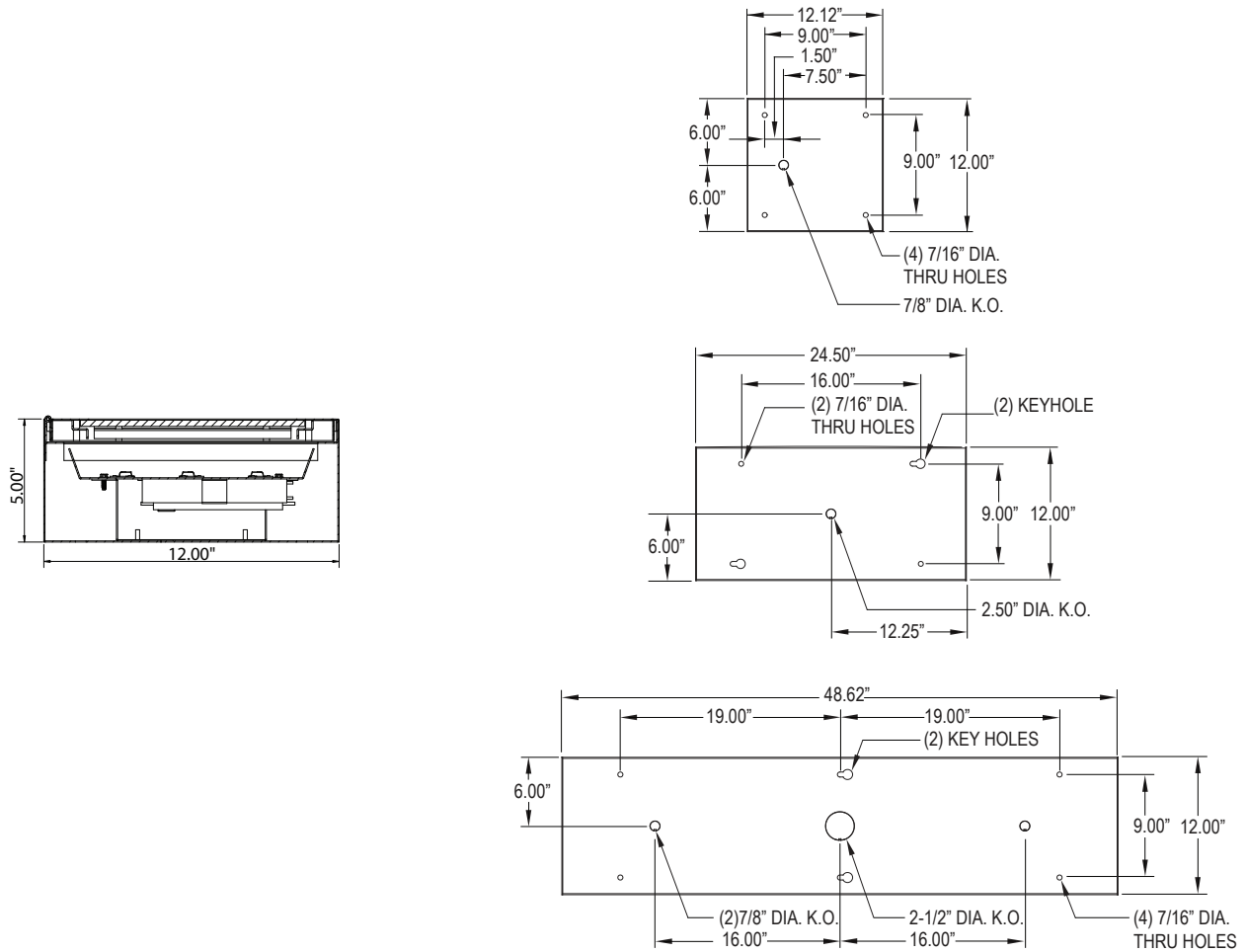
5311/5312/5314/5322/5324

DIMENSIONAL DATA

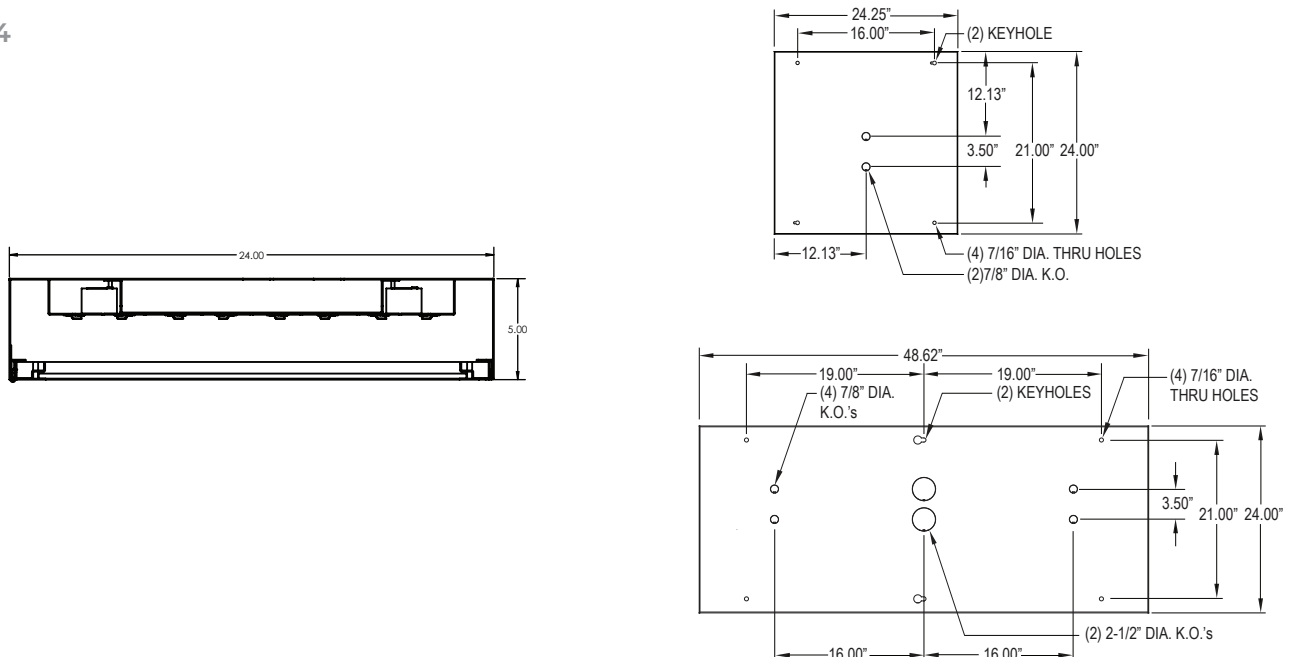
Fixture weight varies and is dependent upon chosen specifications. Consult factory for additional information.

Average weight of the 5312 is 30lbs. Average weight of the 5314 is 60lbs. Average weight of the 5322 is 35lbs. Average weight of the 5324 is 70lbs.

5311-12-14



5322-24



Notes:
This product is Made in America and complies with the Buy American Act requirements. Specifications and Dimensions are subject to change without notice. For additional options and dimensional details please consult your New Star Lighting Rep.